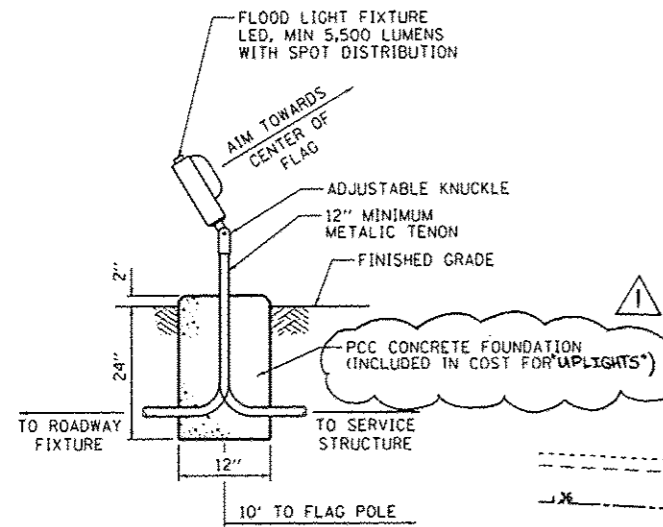


SUMMARY OF QUANTITIES			CONSTRUCTION CODE 0005			
CODE NO.	ITEM DESCRIPTION	UNIT	100% STATE	NORTH SITE	SOUTH SITE	EAST SITE
			TOTAL QUANTITY			
* 81028320	UNDERGROUND CONDUIT, PVC, 1" DIA.	FOOT	289	135	154	
* 81702110	ELECTRICAL CABLE IN CONDUIT, 600V (XLP-TYPE USE) 1/C NO. 10	FOOT	1,034	441	593	
* 83057012	LIGHT POLE, WOOD, 30 FOOT, CLASS 5	EACH	2	1	1	
* 84200600	REMOVAL OF LIGHTING UNIT, NO SALVAGE	EACH	14	2	4	8
⚠ * 84500120	REMOVAL OF SERVICE INSTALLATION <i>ELECTRIC</i>	EACH	1	1		
X0300019	REMOVE AND REINSTALL PARKING BLOCKS	EACH	41	24	17	
X0300249	REMOVE EXISTING GATE	EACH	4	3	1	
X0301339	REMOVE EXISTING PARKING BLOCKS	EACH	53	53		
X0323013	TUBULAR STEEL GATE	EACH	3	2	1	
X0323265	REMOVE EXISTING RIPRAP	SO YD	178			178
X0323407	FLAG POLES	EACH	1	1		
* X0324390	FLOOD LIGHTING UNIT	EACH	1		1	
X0324840	DISKING	ACRE	1.00	1.00		
X0325800	PARKING LOT SEAL COAT	SO YD	27,071	8,843	18,228	

⚠ REVISED 6-4-13

* Specialty Items

FILE NAME : L:\DOT\1186610\MO\Draw\CADD\Sheets\0746255_Summary of Quantities.dgn	USER NAME : Brian Bond	DESIGNED - BMB	REVISED -	STATE OF ILLINOIS DEPARTMENT OF TRANSPORTATION	SUMMARY OF QUANTITIES NEWTON LAKE STATE FISH AND WILDLIFE AREA		F.A. RTE. N/A	SECTION PARKS ROADS	COUNTY JASPER	TOTAL SHEETS 66	SHEET NO. 7	
Sheet 5	PLOT SCALE : 100.0000' / in.	CHECKED - JMM	REVISED -		SCALE: N/A	SHEET 7 OF SHEETS	STA. TO STA.	CONTRACT NO. 46255				
	PLOT DATE : 3/29/2013	DATE - 3/29/2013	REVISED -		ILLINOIS FED. AID PROJECT							



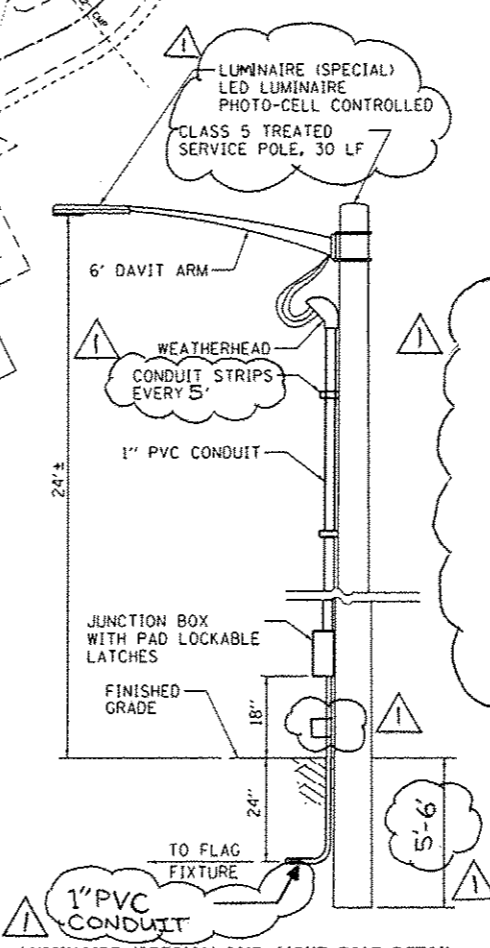
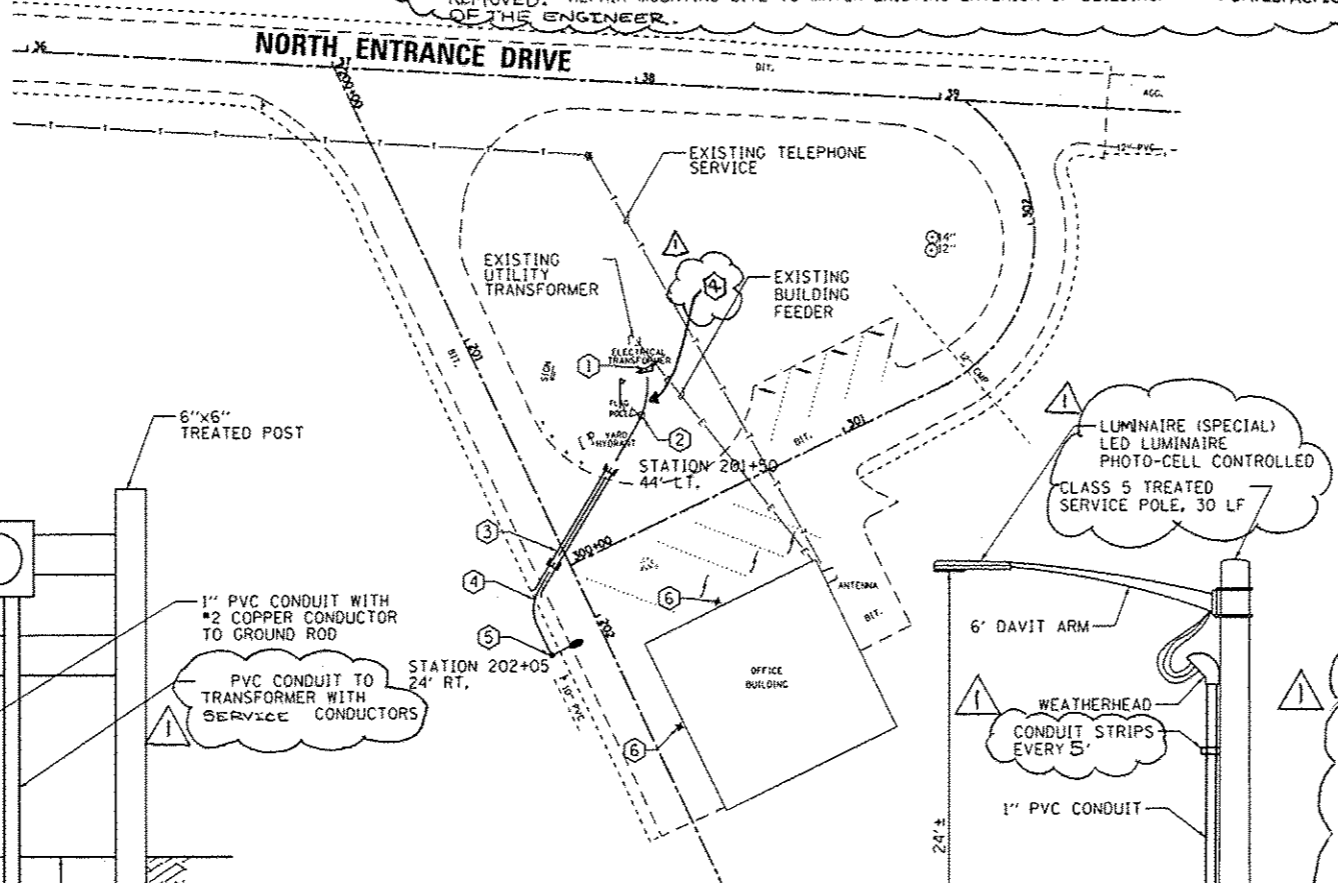
UPLIGHTS FIXTURE DETAIL
N.T.S.

KEYED NOTES:

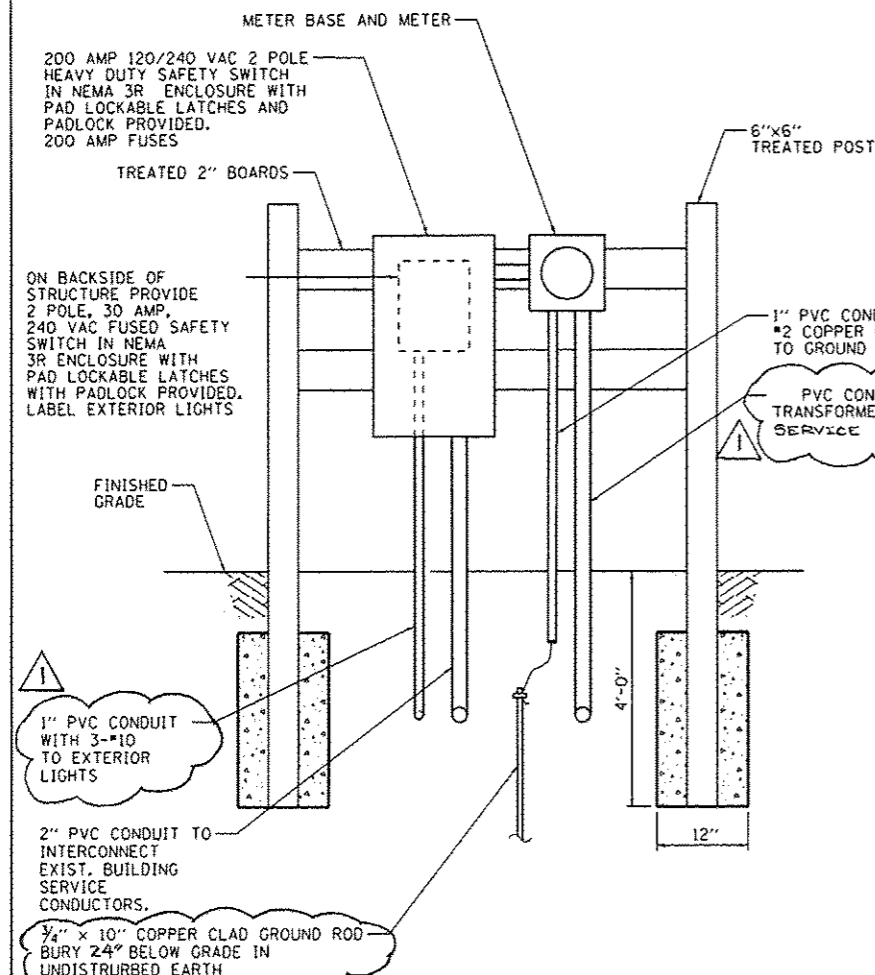
- ① IN COORDINATION WITH THE SERVING UTILITY THE CONTRACTOR SHALL REMOVE THE METER BASE OFF OF THE TRANSFORMER AND RELOCATE NEW SERVICE TO SERVICE STRUCTURE. SEE ELECTRICAL SERVICE DETAIL FOR FURTHER INFORMATION.
- ② FLOODLIGHT GROUND MOUNTED 10 FEET FROM EXISTING FLAG. SEE FLOODLIGHT DETAIL FOR FURTHER INFORMATION. THIS WORK SHALL BE PAID FOR AS "UPLIGHTS" - EACH.
- ③ CONDUIT PUSHED OR BORED UNDERNEATH BITUMINOUS PAVEMENT, **SCHEDULE 80**
- ④ TWO #10. ONE #10 GROUND IN 1 INCH SCHEDULE 40 PVC CONDUIT
- ⑤ LED LUMINAIRE, 8700 LUMEN, INDIVIDUAL PHOTO-CELL CONTROLLED FIXTURE MOUNTED ON A 30 FOOT CLASS 5 TREATED WOOD POLE. SEE **DETAIL BELOW** FOR FURTHER INFORMATION. THIS WORK SHALL BE PAID FOR AS "LUMINAIRE (SPECIAL)" - EACH. JUNCTION BOX AND POLE MOUNTED CONDUIT AND FITTINGS SHALL BE INCLUDED IN THE COST OF THE "UNDERGROUND CONDUIT" PAY ITEM.
- ⑥ EXISTING BUILDING MOUNTED EXTERIOR HIGH-INTENSITY DISCHARGE FIXTURE TO BE REMOVED. REPAIR MOUNTING SITE TO MATCH EXISTING EXTERIOR OF BUILDING TO THE SATISFACTION OF THE ENGINEER.

GENERAL NOTES:

1. WHERE UTILITY LINES UNDERGROUND OBSTRUCTIONS OR PIPING MAY BE UNCOVERED ON THE PROJECT, THE CONTRACTOR SHALL NOTIFY THE OWNER OF THE UTILITY AND TAKE ALL NECESSARY MEASURES TO PREVENT INTERRUPTION OF SERVICES THAT MAY BE DAMAGED OR INTERRUPTED THROUGH THE CONTRACTOR'S OWN NEGLIGENCE AND BE RESPONSIBLE FOR IMMEDIATE REPAIR AND/OR RESTORATION AT THE CONTRACTOR'S EXPENSE.
2. ALL DISTURBED AREAS SHALL BE RESTORED WITH 4" OF TOPSOIL, SEEDING AND MULCH. THIS WORK WILL BE IN ACCORDANCE WITH SECTIONS 211 AND 252 OF THE STANDARD SPECIFICATIONS.
3. ALL LOCATIONS AND DIMENSIONS ARE APPROXIMATE. THE CONTRACTOR SHALL FIELD VERIFY ALL ELECTRICAL EQUIPMENT LOCATIONS AND DIMENSIONS PRIOR TO ORDERING AND INSTALLING.
4. ALL ELECTRICAL EQUIPMENT SHALL BE INSTALLED IN CONFORMANCE WITH NFPA70 (NATIONAL ELECTRIC CODE, MOST CURRENT ISSUE), THE RESPECTIVE EQUIPMENT MANUFACTURER'S DIRECTIONS AND ALL OTHER APPLICABLE LOCAL CODES, LAWS, ORDINANCES AND REQUIREMENTS IN FORCE. ANY INSTALLATION'S WHICH WOULD VOID THE U.L. LISTINGS (OR THIRD PARTY LISTINGS) AND/OR THE MANUFACTURER'S WARRANTY OF A DEVICE WILL NOT BE PERMITTED.
5. IF REQUIRED BY THE ENGINEER, THE CONTRACTOR SHALL PROVIDE A ONETIME NIGHTTIME SIGHT VISIT TO RE-AIM AS MANY LIGHT FIXTURES AS DEEMED NECESSARY BY THE ENGINEER.
6. THE CONTRACTOR SHALL NOT REMOVE ANY OF THE EXISTING LIGHT FIXTURES UNTIL THE NEW UNITS ARE AVAILABLE. THE UNITS SHALL BE REPLACED IN SUCH A MANNER THAT ALL THE LIGHT FIXTURES (EXISTING AND NEW) ARE IN OPERATION DURING EACH NIGHT.
7. THE CONTRACTOR SHALL COORDINATE THE RECONSTRUCTION OF THE ELECTRICAL SERVICE WITH THE SERVING UTILITY, NORRIS ELECTRIC CORPORATION, 8543 NORTH STATE HWY 130, NEWTON, IL 62448 TELEPHONE NUMBER (877) 783-8765 ATTENTION TIM HUBER OR EMAIL AT THUBER@NORRISELECTRIC.COM.
8. THE CONTRACTOR SHALL FURNISH AND INSTALL UTILITY METERING EQUIPMENT AS REQUIRED BY SERVING UTILITY AND SHALL COORDINATE EXACT LOCATION OF THIS METERING WITH SERVING UTILITY AND OWNER'S AUTHORIZED REPRESENTATIVE.
9. IN ORDER TO MINIMIZE DOWN-TIME TO THE EXISTING FACILITY, AN EXISTING SERVICE SHALL REMAIN IN SERVICE AS LONG AS POSSIBLE UNTIL NEW SERVICE OR MODIFICATIONS ARE IN PLACE AND READY FOR SWITCH-OVER. ANY SHUTDOWN OR DISRUPTION OF THE EXISTING FACILITY POWER DISTRIBUTION SHALL BE COORDINATED WITH THE OWNER AND ENGINEER. A MINIMUM OF 72 HOURS WRITTEN NOTICE OF ANY SUCH SHUTDOWN SHALL BE FURNISHED BY CONTRACTOR BEFORE COMMENCING WITH ANY SUCH WORK. BEFORE DISCONNECTION OF ANY EXISTING SERVICE ENTRANCE OR POWER, NEW IMPROVEMENTS SHALL BE FULLY INSTALLED, CHECKED OUT AND READY FOR COMMISSION. ANY EXISTING UTILITY EQUIPMENT TO BE DE-COMMISSIONED OR REMOVED SHALL BE DONE ONLY AFTER NEW IMPROVEMENTS HAVE BEEN THOROUGHLY TESTED AND ACCEPTED FOR PERMANENT OPERATION.
10. CONDUIT LOCATIONS SHOWN IN THE PLANS ARE DIAGRAMMATIC IN NATURE AND MAY BE VARIED TO SUIT FIELD CONDITIONS. SHOULD A CONFLICT ARISE, THE CONTRACTOR SHALL CONTACT THE ENGINEER IMMEDIATELY FOR A RESOLUTION.
11. ALL CONDUIT BELOW EXISTING SIDEWALKS OR PAVED SURFACES SHALL BE DIRECTIONAL BORED, UNLESS OTHERWISE APPROVED BY THE ENGINEER.

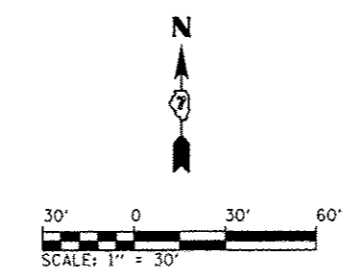


LUMINAIRE (SPECIAL) AND LIGHT POLE DETAIL
N.T.S.



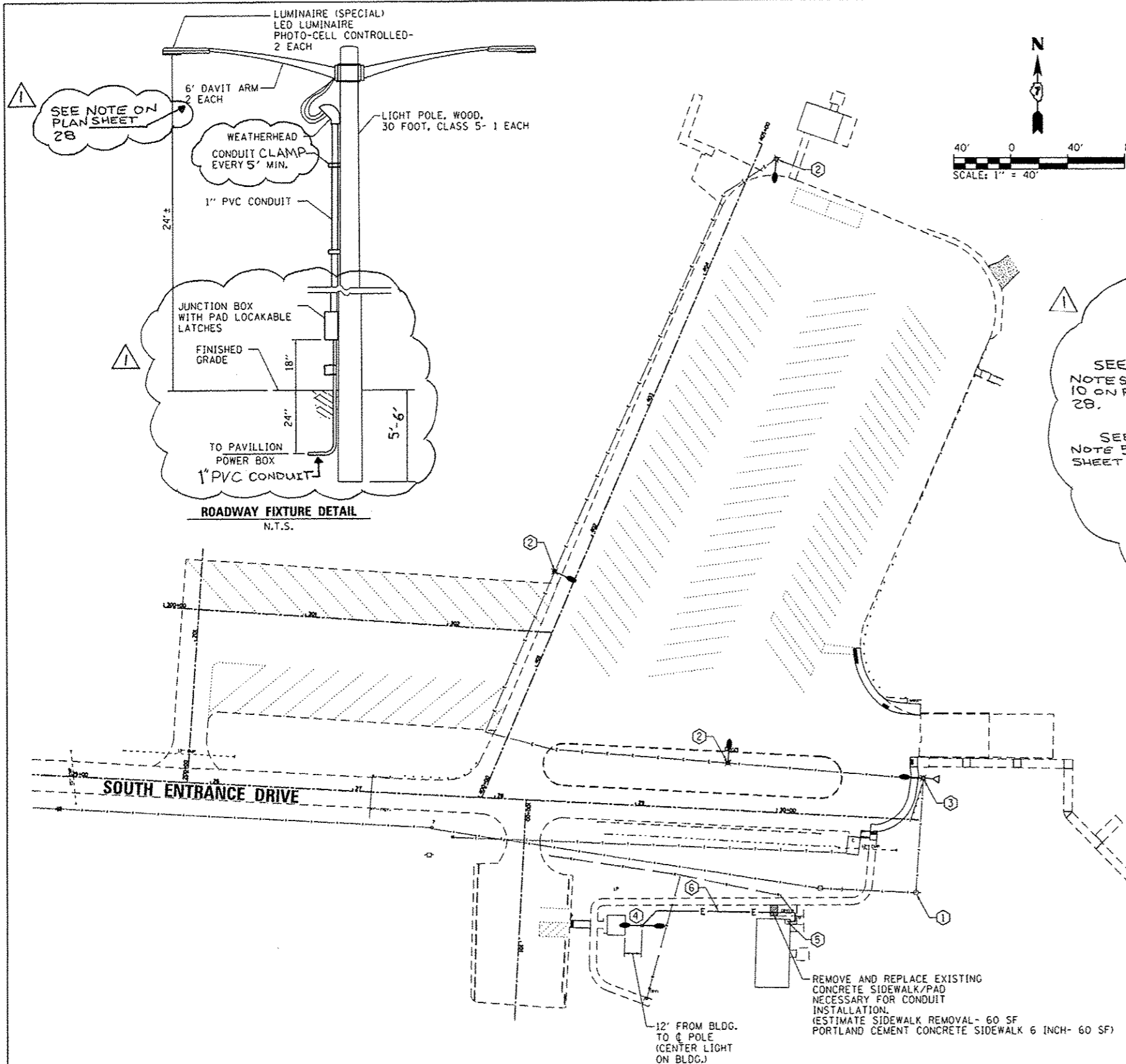
ELECTRIC SERVICE INSTALLATION DETAIL
N.T.S.

REVISION 6-4-13



NOTE:
ARM STYLE, MATERIAL, AND ATTACHMENT METHOD TO WOOD POLE SHALL MATCH THAT OF THE EXISTING ARM LOCATED AT THE SOUTH ENTRANCE DRIVE PARKING LOT. HARDWARE SHALL BE GALVANIZED OR STAINLESS STEEL.

FILE NAME : L:\1001\118661\10-13\Drawings\CA00_Sheets\1	USER NAME : Brian Bond	DESIGNED : BMB	REVISED :	STATE OF ILLINOIS DEPARTMENT OF TRANSPORTATION	LIGHTING AND ELECTRICAL PLAN - PARK OFFICE PARKING NEWTON LAKE STATE FISH AND WILDLIFE AREA				F.A. RTE. N/A	SECTION PARKS ROADS	COUNTY JASPER	TOTAL SHEETS 66	SHEET NO. 28
PLT SCALE : 60.0000 / 1 in.	CHECKED : JMM	REVISED :	SCALE: AS NOTED SHEET OF SHEETS STA. TO STA.										
PLT DATE : 3/29/2013	DATE : 3/29/2013	REVISED :	CONTRACT NO. 46255										
			ILLINOIS FED. AID PROJECT										



GENERAL NOTES:

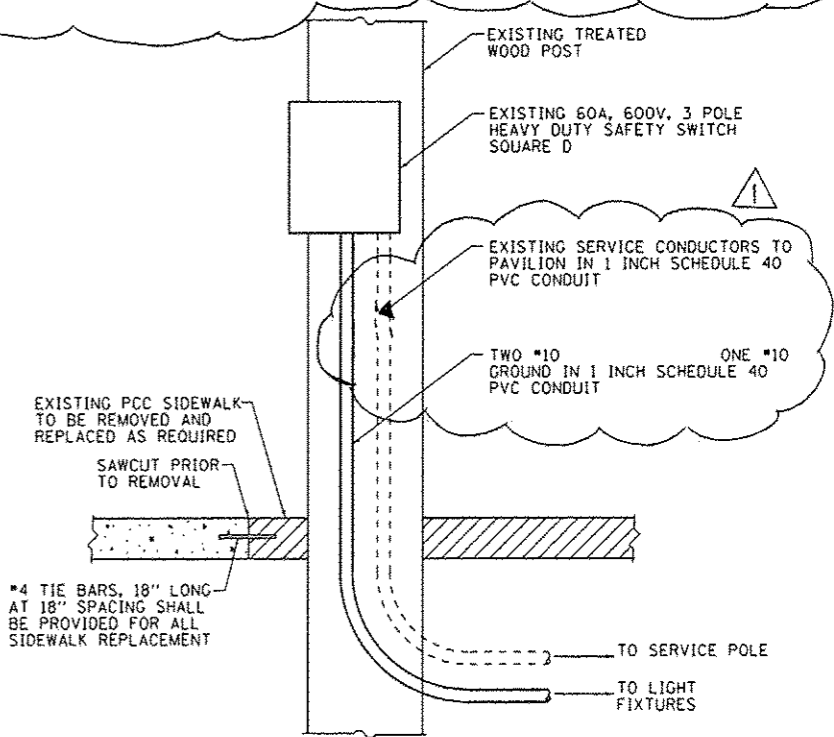
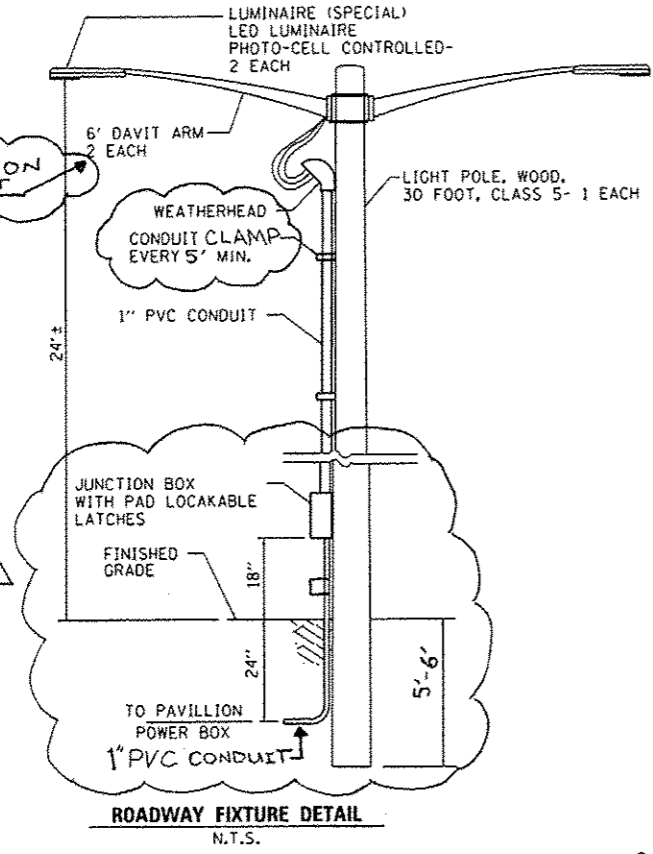
1. ALL LOCATIONS AND DIMENSIONS ARE APPROXIMATE. THE CONTRACTOR SHALL FIELD VERIFY ALL ELECTRICAL EQUIPMENT LOCATIONS AND DIMENSIONS PRIOR TO ORDERING AND INSTALLING.
2. ALL ELECTRICAL EQUIPMENT SHALL BE INSTALLED IN CONFORMANCE WITH NFPA70 (NATIONAL ELECTRIC CODE, MOST CURRENT ISSUE), THE RESPECTIVE EQUIPMENT MANUFACTURER'S DIRECTIONS AND ALL OTHER APPLICABLE LOCAL CODES, LAWS, ORDINANCES AND REQUIREMENTS IN FORCE. ANY INSTALLATION WHICH WOULD VOID THE U.L. LISTINGS (OR THIRD PARTY LISTINGS) AND/OR THE MANUFACTURER'S WARRANTY OF A DEVICE WILL NOT BE PERMITTED.
3. IF REQUIRED BY THE ENGINEER, THE CONTRACTOR SHALL PROVIDE A ONETIME NIGHTTIME SIGHT VISIT TO RE-AIM AS MANY LIGHT FIXTURES AS DEEMED NECESSARY BY THE ENGINEER.
4. THE CONTRACTOR SHALL NOT REMOVE ANY OF THE EXISTING LIGHT FIXTURES UNTIL THE NEW UNITS ARE AVAILABLE. THE UNITS SHALL BE REPLACED IN SUCH A MANNER THAT ALL THE LIGHT FIXTURES (EXISTING AND NEW) ARE IN OPERATION DURING EACH NIGHT.

KEYED NOTES:

- ① EXISTING UTILITY SERVICE ENTRANCE, METER, AND DISCONNECT SWITCH TO REMAIN.
- ② EXISTING STREETLIGHT TYPE LIGHT FIXTURE TO BE REMOVED. EXISTING 30 FOOT CLASS 5 TREATED WOOD LIGHT POLE WITH 4 FOOT MOUNTING ARM TO REMAIN. PROVIDE LED LUMINAIRE, 8700 LUMEN, INDIVIDUAL PHOTO-CELL CONTROLLED AT 30 FEET ABOVE FINISHED GRADE WITH ASSOCIATED HARDWARE. RECONNECT TO EXISTING CONDUCTORS. THIS WORK SHALL BE PAID FOR AS "LUMINAIRE (SPECIAL)" - EACH.
- ③ EXISTING STREETLIGHT TYPE LIGHT FIXTURE WITH MOUNTING ARM AND FLOOD TYPE FIXTURE ON 30 FOOT CLASS 5 TREATED WOOD SERVICE POLE PHOTOCCELL CONTROLLED AND ASSOCIATED HARDWARE TO BE DEMOLISHED. ON PARKING LOT SIDE PROVIDE LED LUMINAIRE, 8700 LUMEN, INDIVIDUAL PHOTO-CELL CONTROLLED AT 30 FEET ABOVE FINISHED GRADE WITH ASSOCIATED HARDWARE. ON LAKE SIDE OF POLE PROVIDE FLOODLIGHT LED MULTITAP PULSE START BALLAST, PHOTO-CELL CONTROLLED, AIMED TOWARDS DOCKS. RECONNECT TO EXISTING CONDUCTORS. THIS WORK SHALL BE PAID FOR AS "FLOOD LIGHTING UNIT" - EACH.
- ④ TWIN LED LUMINAIRE, 8700 LUMEN, PHOTO-CELL CONTROLLED FIXTURE MOUNTED ON 30 FOOT CLASS 5 TREATED WOOD LIGHT POLE. SEE ROADWAY FIXTURE DETAIL. JUNCTION BOX AND POLE MOUNTED CONDUIT AND FITTINGS SHALL BE INCLUDED IN THE COST OF THE "UNDERGROUND CONDUIT" PAY ITEM.
- ⑤ LIGHTING CONNECTION TO EXISTING PAVILION POWER BOX. REMOVE AND REPLACE EXISTING CONCRETE SIDEWALK/PAD AS NECESSARY FOR CONDUIT INSTALLATION. CONNECTION TO EXISTING BOX INCLUDED IN THE COST FOR "UNDERGROUND CONDUIT"
- ⑥ TWO #10 GROUND IN 1 INCH SCHEDULE 40 PVC CONDUIT

SEE GENERAL NOTES 1, 2, AND 10 ON PLAN SHEET 28.

SEE GENERAL NOTE 5 ON PLAN SHEET 54.



REVISION 6-4-13

FILE NAME *	USER NAME * Brian Bond	DESIGNED - BMB	REVISED -	STATE OF ILLINOIS DEPARTMENT OF TRANSPORTATION	LIGHTING AND ELECTRICAL PLAN - SOUTH DAY USE & BOAT ACCESS AREA NEWTON LAKE STATE FISH AND WILDLIFE AREA		F.A. R.T.E.	SECTION	COUNTY	TOTAL SHEETS	SHEET NO.		
L:\DOT\1186GIB\NO.13\Draw\CA00.Sheets\46255.ElectPlan - South.dgn	46255.ElectPlan - South.dgn	DRAWN - RAH	REVISED -				N/A	PARKS ROADS	JASPER	66	42		
Default	PLOT SCALE * 3/8" = 1' in.	CHECKED - JMM	REVISED -				SCALE: 1" = 40'		SHEET OF SHEETS STA. TO STA.		CONTRACT NO. 46255		
	PLOT DATE * 3/29/2013	DATE - 3/29/2013	REVISED -				ILLINOIS FED. AID PROJECT						

