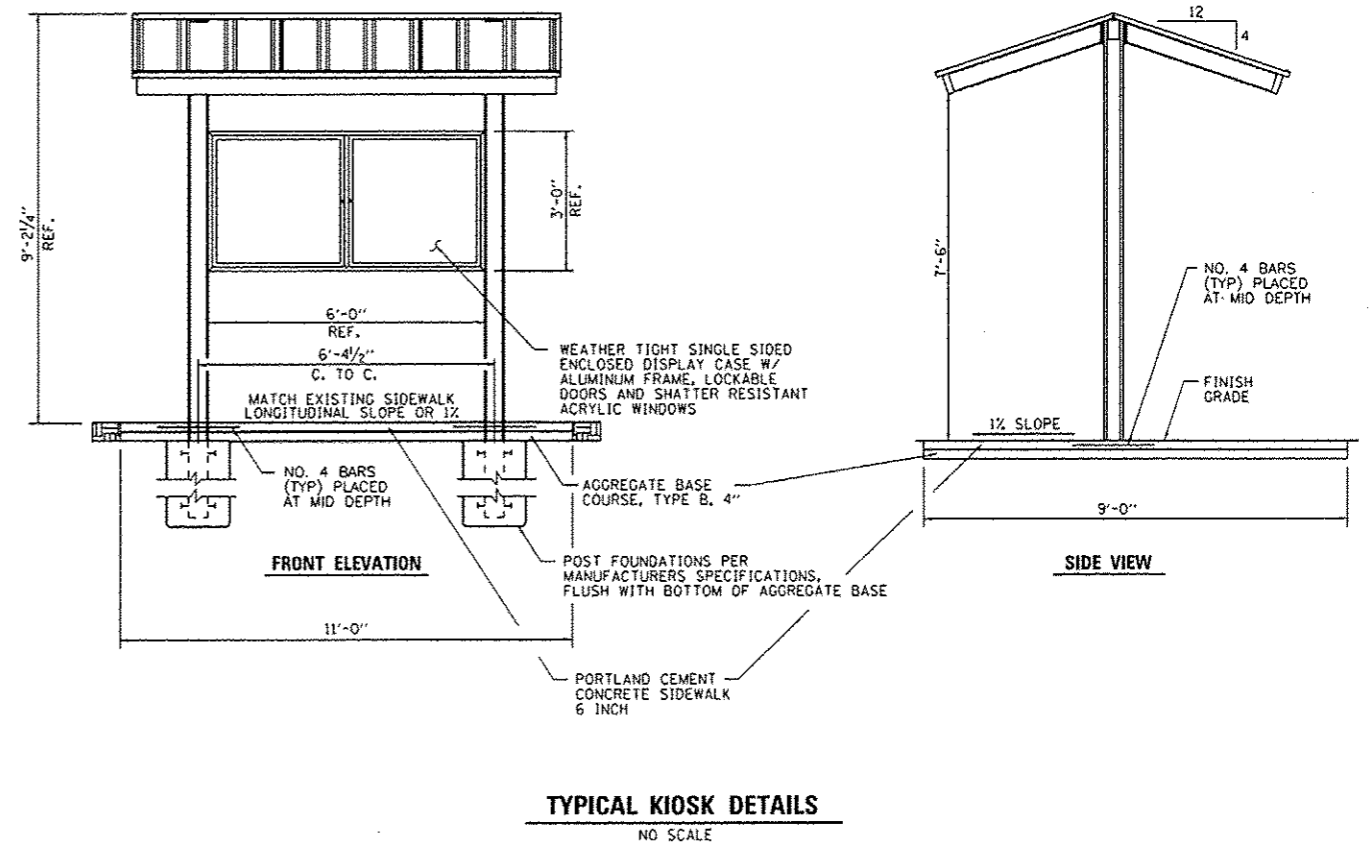
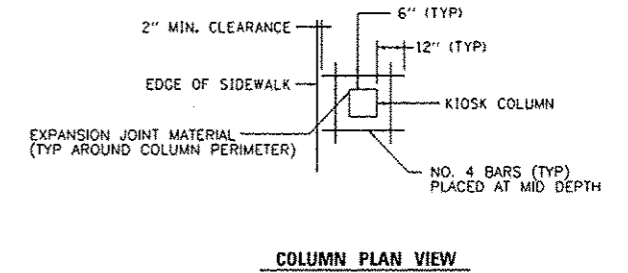


- NOTES:
1. PROPOSED SIDEWALK SHALL BE CONSTRUCTED IN ACCORDANCE WITH CURRENT ADA REQUIREMENTS (NO SLOPE SHALL EXCEED 2% IN ANY DIRECTION).
  2. EXPANSION JOINT MATERIAL AND REBAR SHALL BE PLACED AROUND THE KIOSK SUPPORTS WHERE THEY ARE ADJACENT TO THE PCC SIDEWALK (SEE DETAIL).
  3. ALL EXCAVATION, PCC SIDEWALK, AGGREGATE BASE COURSE, EXPANSION JOINT AND REBAR REQUIRED TO CONSTRUCT THE KIOSK, PCC SIDEWALK AND AGGREGATE BASE COURSE SHALL BE CONSIDERED INCIDENTAL TO THE COST OF THE INFORMATION KIOSK COMPLETE.



FILE NAME =	USER NAME = Brian Bond	DESIGNED - BMB	REVISED -
L:\1007\1186618\WD-13\Draw\CAD\00_Sheets\046255_Details.dgn		DRAWN - RAH	REVISED -
		CHECKED - JMM	REVISED -
		DATE - 3/29/2013	REVISED -

PLOT SCALE = 100.0000 1/16" = 1'-0"  
PLOT DATE = 3/29/2013

STATE OF ILLINOIS  
DEPARTMENT OF TRANSPORTATION

MISCELLANEOUS DETAILS  
NEWTON LAKE STATE FISH AND WILDLIFE AREA

SCALE: N.T.S. SHEET OF SHEETS STA. TO STA.

F.A. RTE.	SECTION	COUNTY	TOTAL SHEETS	SHEET NO.
N/A	PARKS ROADS	JASPER	66	64
CONTRACT NO. 46255				
ILLINOIS FED. AID PROJECT				