

STATE OF ILLINOIS
 DEPARTMENT OF TRANSPORTATION
 DIVISION OF HIGHWAYS
**PROPOSED
 HIGHWAY PLANS**
 GRANT HOME STATE HISTORIC SITE
 SITE IMPROVEMENTS
 JO DAVIESS COUNTY
 JOB NO. C-30-018-13

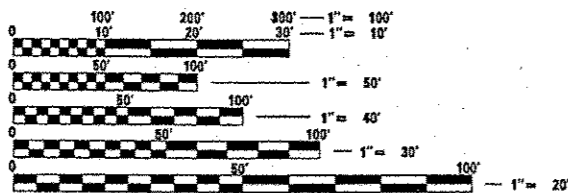
F.A.P. RTE.	SECTION	COUNTY	TOTAL SHEETS	SHEET NO.
		JO DAVIESS	7	1
		ILLINOIS	CONTRACT NO. 46260	

INDEX OF SHEETS

- 1 COVER SHEET
- 2 SUMMARY OF QUANTITIES
- 3 TYPICAL SECTIONS AND GENERAL NOTES
- 4 SCHEDULE OF QUANTITIES
- 5 REMOVAL PLAN
- 6 GRADING AND LANDSCAPING PLAN
- 7 RETAINING WALL DETAILS

HIGHWAY STANDARDS

- 000001-06 STANDARD SYMBOLS, ABBREVIATIONS AND PATTERNS
- 001001-02 AREA OF REINFORCEMENT BARS
- 001006 DECIMAL OF AN INCH AND OF A FOOT
- 280001-07 TEMPORARY EROSION CONTROL SYSTEMS
- 701001-02 OFF-RD OPERATIONS, 2L, 2W MORE THAN 15" (4.5M) AWAY
- 701006-04 OFF-RD OPERATIONS, 2L, 2W, 15" (4.5mm) TO 24" (600mm) FROM PAVEMENT EDGE
- 701301-04 LANE CLOSURE, 2L, 2W, SHORT TIME OPERATION
- 701501-06 URBAN LANE CLOSURE, 2L, 2W, UNDIVIDED
- 701801-05 SIDEWALK, CORNER OR CROSSWALK CLOSURE
- 701901-02 TRAFFIC CONTROL DEVICES

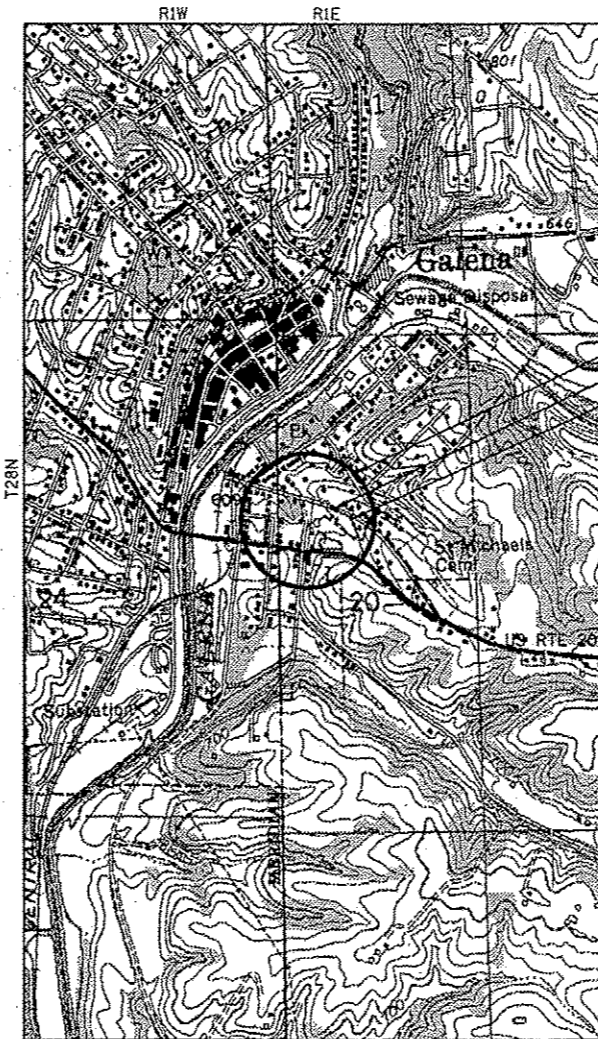


FULL SIZE PLANS HAVE BEEN PREPARED USING STANDARD ENGINEERING SCALES. REDUCED SIZED PLANS WILL NOT CONFORM TO STANDARD SCALES. IN MAKING MEASUREMENTS ON REDUCED PLANS, THE ABOVE SCALES MAY BE USED.

J.U.L.I.E.
 JOINT UTILITY LOCATION INFORMATION FOR EXCAVATION
 1-800-892-0123
 OR 811

EAST GALENA TOWNSHIP, SECTION 20

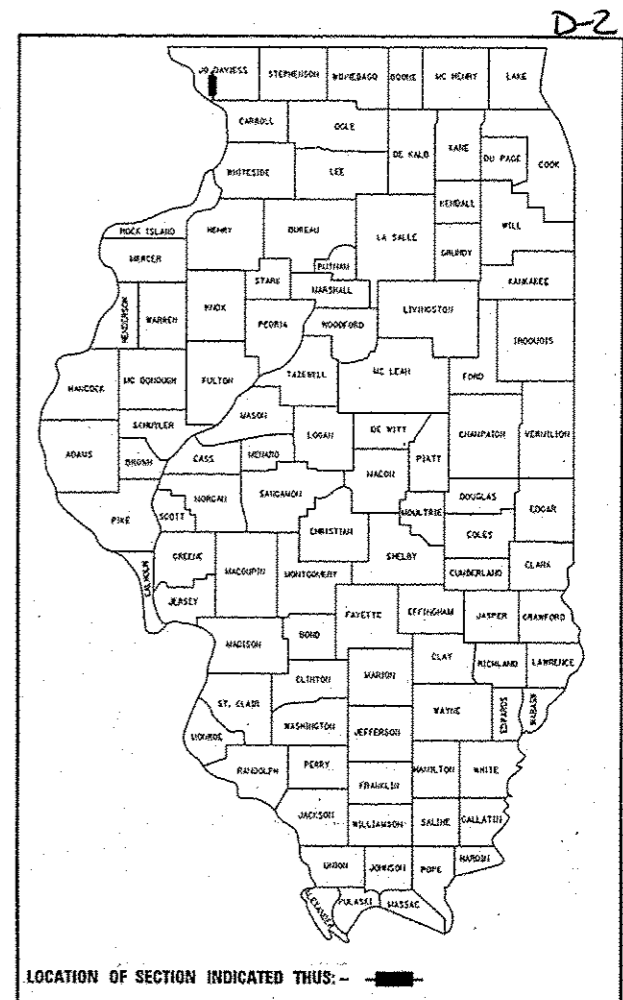
CONTRACT 46260



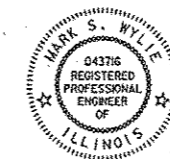
PROJECT LOCATION
 GRANT HOME
 BOUTHILLIER STREET



LOCATION MAP
 NOT TO SCALE



LOCATION OF SECTION INDICATED THUS: -



Mark S. Wylie Date 1/14/13
 MARK S. WYLIE
 REGISTERED PROFESSIONAL ENGINEER
 NO. 062-04376
 EXPIRATION 11/30/13

STATE OF ILLINOIS
 DEPARTMENT OF TRANSPORTATION
 DIVISION OF HIGHWAYS

SUBMITTED *May 10 2013*
William B. Frey, Jr.
 DEPUTY DIRECTOR OF HIGHWAYS, REGION ENGINEER

May 10 2013
John D. Baranzelli, P.E.
 ENGINEER OF DESIGN AND ENVIRONMENT

May 10 2013
Omer Osman, P.E.
 DIRECTOR OF HIGHWAYS, CHIEF ENGINEER

**PRINTED BY THE AUTHORITY
 OF THE STATE OF ILLINOIS**