

06-14-13 LETTING ITEM 196

STATE OF ILLINOIS  
 DEPARTMENT OF TRANSPORTATION  
 DIVISION OF HIGHWAYS  
**PROPOSED  
 HIGHWAY PLANS**  
 GRANT HOME STATE HISTORIC SITE  
 SITE IMPROVEMENTS  
 JO DAVIESS COUNTY  
 JOB NO. C-30-018-13

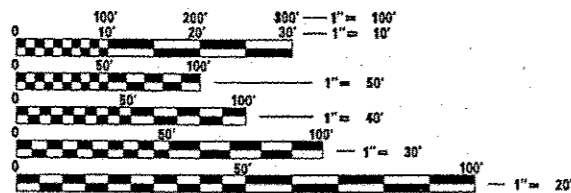
F.A.P. RTE.	SECTION	COUNTY	TOTAL SHEETS	SHEET NO.
		JO DAVIESS	7	1
		ILLINOIS	CONTRACT NO. 46260	

**INDEX OF SHEETS**

- 1 COVER SHEET
- 2 SUMMARY OF QUANTITIES
- 3 TYPICAL SECTIONS AND GENERAL NOTES
- 4 SCHEDULE OF QUANTITIES
- 5 REMOVAL PLAN
- 6 GRADING AND LANDSCAPING PLAN
- 7 RETAINING WALL DETAILS

**HIGHWAY STANDARDS**

- 000001-06 STANDARD SYMBOLS, ABBREVIATIONS AND PATTERNS
- 001001-02 AREA OF REINFORCEMENT BARS
- 001006 DECIMAL OF AN INCH AND OF A FOOT
- 280001-07 TEMPORARY EROSION CONTROL SYSTEMS
- 701001-02 OFF-RD OPERATIONS, 2L, 2W MORE THAN 15" (4.5M) AWAY
- 701006-04 OFF-RD OPERATIONS, 2L, 2W, 15" (4.5mm) TO 24" (600mm) FROM PAVEMENT EDGE
- 701301-04 LANE CLOSURE, 2L, 2W, SHORT TIME OPERATION
- 701501-06 URBAN LANE CLOSURE, 2L, 2W, UNDIVIDED
- 701801-05 SIDEWALK, CORNER OR CROSSWALK CLOSURE
- 701901-02 TRAFFIC CONTROL DEVICES

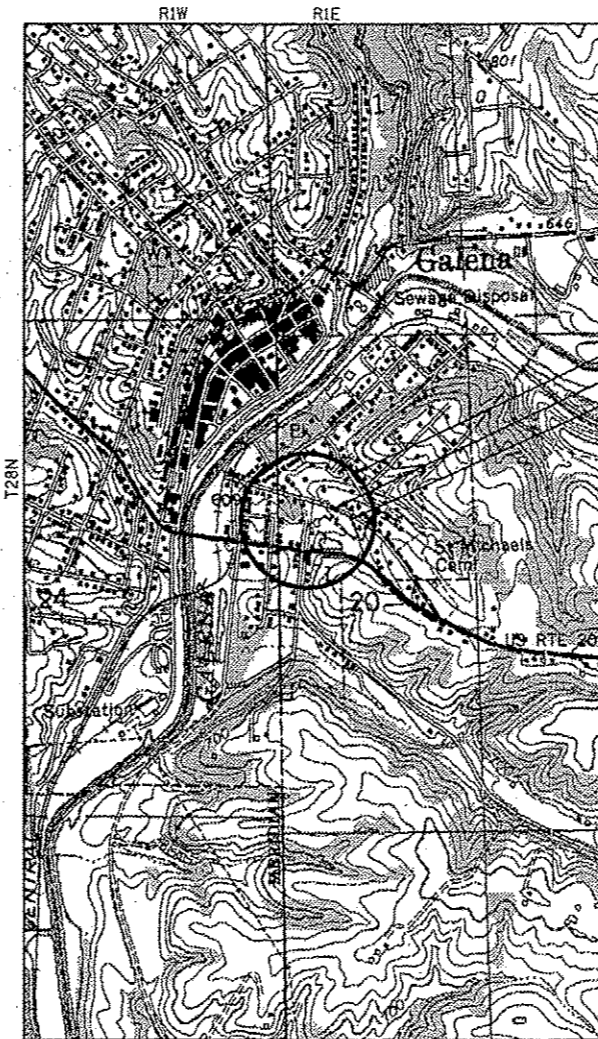


FULL SIZE PLANS HAVE BEEN PREPARED USING STANDARD ENGINEERING SCALES. REDUCED SIZED PLANS WILL NOT CONFORM TO STANDARD SCALES. IN MAKING MEASUREMENTS ON REDUCED PLANS, THE ABOVE SCALES MAY BE USED.

J.U.L.I.E.  
 JOINT UTILITY LOCATION INFORMATION FOR EXCAVATION  
 1-800-892-0123  
 OR 811

EAST GALENA TOWNSHIP, SECTION 20

CONTRACT 46260



**LOCATION MAP**  
 NOT TO SCALE

PROJECT LOCATION  
 GRANT HOME  
 BOUTHILLIER STREET



LOCATION OF SECTION INDICATED THUS: -



*Mark S. Wylie* Date 1/11/13  
 MARK S. WYLIE  
 REGISTERED PROFESSIONAL ENGINEER  
 NO. 062-043716  
 EXPIRATION 11/30/13

STATE OF ILLINOIS  
 DEPARTMENT OF TRANSPORTATION  
 DIVISION OF HIGHWAYS

SUBMITTED *May 10 2013*  
*William B. Frey, Jr.*  
 DEPUTY DIRECTOR OF HIGHWAYS, REGION ENGINEER

*May 10 2013*  
*John D. Baranzelli, P.E.*  
 ENGINEER OF DESIGN AND ENVIRONMENT

*May 10 2013*  
*Omer Osman, P.E.*  
 DIRECTOR OF HIGHWAYS, CHIEF ENGINEER

**PRINTED BY THE AUTHORITY  
 OF THE STATE OF ILLINOIS**

25

CODE NO.	ITEM	UNIT	TOTAL QUANTITY	CONSTR. CODE	
				100% STATE ROADWAY	
				0028	URBAN
20100210	TREE REMOVAL (OVER 15 UNITS DIAMETER)	UNIT	28	28	
20101000	TEMPORARY FENCE	FOOT	32	32	
20700220	POROUS GRANULAR EMBANKMENT	CU YD	5	5	
25200100	SODDING	SQ YD	650	650	
25200200	SUPPLEMENTAL WATERING	UNIT	5	5	
28000250	TEMPORARY EROSION CONTROL SEEDING	POUND	17	17	
28000400	PERIMETER EROSION BARRIER	FOOT	282	282	
50300225	CONCRETE STRUCTURES	CU YD	7.3	7.3	
50800205	REINFORCEMENT BARS, EPOXY COATED	POUND	910	910	
50901760	PIPE HANDRAIL	FOOT	23	23	
67100100	MOBILIZATION	L SUM	1	1	
70102620	TRAFFIC CONTROL AND PROTECTION, STANDARD 701501	L SUM	1	1	
70102640	TRAFFIC CONTROL AND PROTECTION, STANDARD 701801	L SUM	1	1	
Z0013798	CONSTRUCTION LAYOUT	L SUM	1	1	

• 141 SPECIALTY ITEM

CODE NO.	ITEM	UNIT	TOTAL QUANTITY	CONSTR. CODE	
				100% STATE ROADWAY	
				0028	URBAN
E20090P2	VINE-EUONYMUS FORTUNEI VAR. COLORATUS (PURPLE LEAF WINTERCREEPER), 2" POT	EACH	133	133	
K0012990	PERENNIAL PLANTS, ORNAMENTAL TYPE, GALLON POT	UNIT	399	399	
K1005481	SHREDDED BARK MULCH 3"	SQ YD	127	127	
XZ127900	RETAINING WALL REMOVAL	FOOT	24	24	
X0325153	MASONRY CLEANING AND TUCKPOINTING	SQ YD	13	13	
X0325788	PRE-EMERGENCE HERBICIDE	SQ YD	127	127	
X0326864	BRICK SIDEWALK REMOVAL	SQ FT	115	115	
X0327070	REMOVE EXISTING FLAGPOLE	EACH	1	1	
X4404700	SIDEWALK REMOVAL (SPECIAL)	SQ FT	966	966	
XX004018	REMOVE AND RELAY BRICK SIDEWALK	SQ FT	144	144	
XX005837	CUT STONE CAP	SQ FT	23	23	

• SPECIALTY ITEM  
11



USER NAME: *USER*	DESIGNED - JCZ	REVISED -
DRAWN - JWK	CHECKED - MSW	REVISED -
PLOT SCALE: *4SCALE*	DATE - 01-11-13	REVISED -
PLOT DATE: *#DATE*		

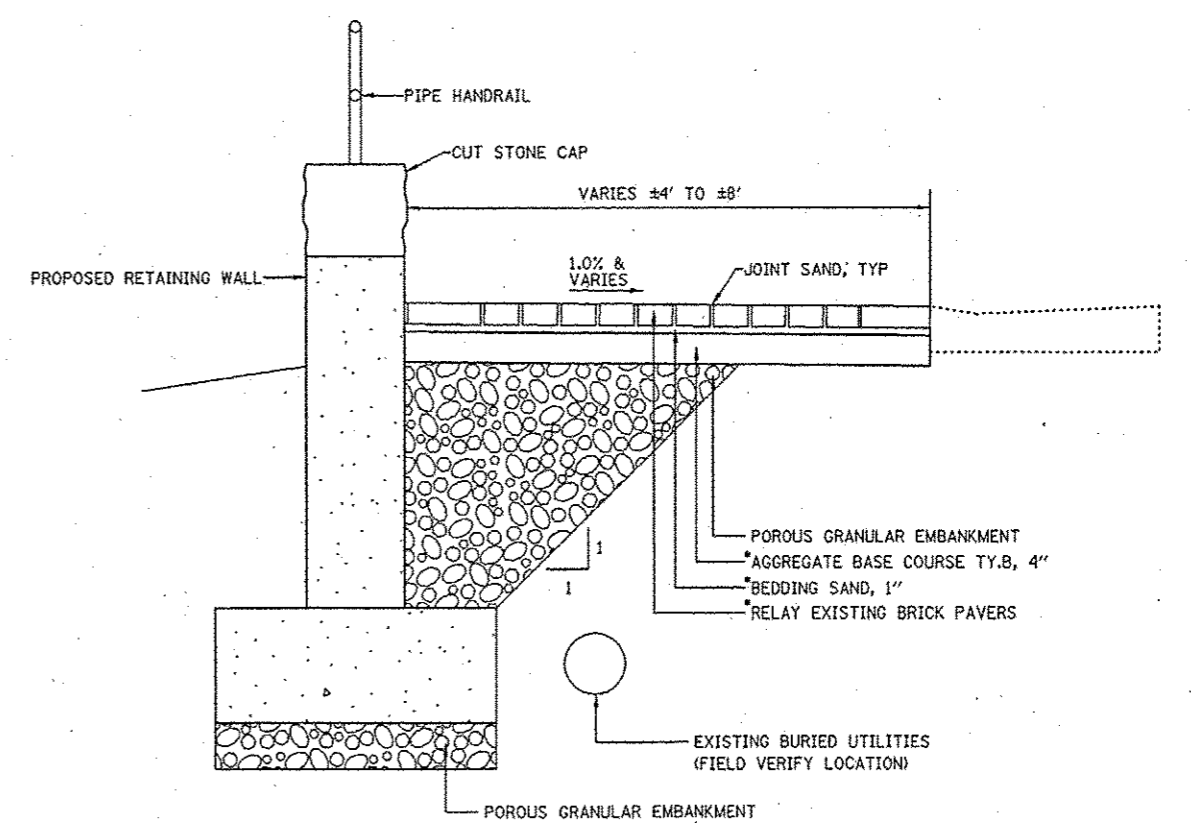
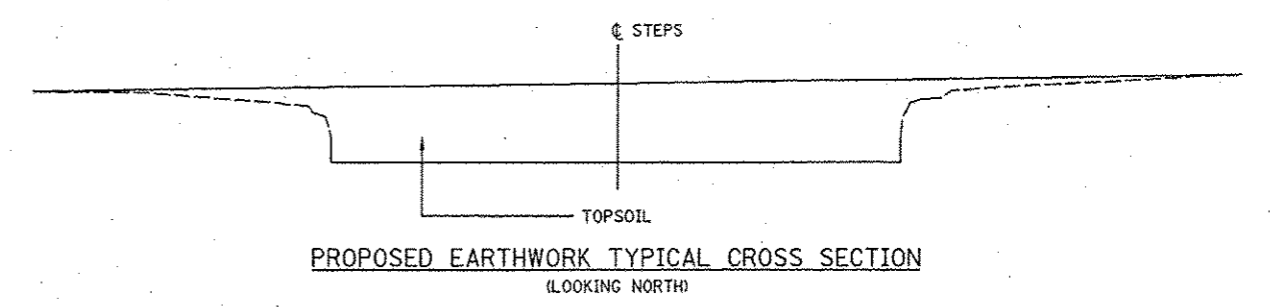
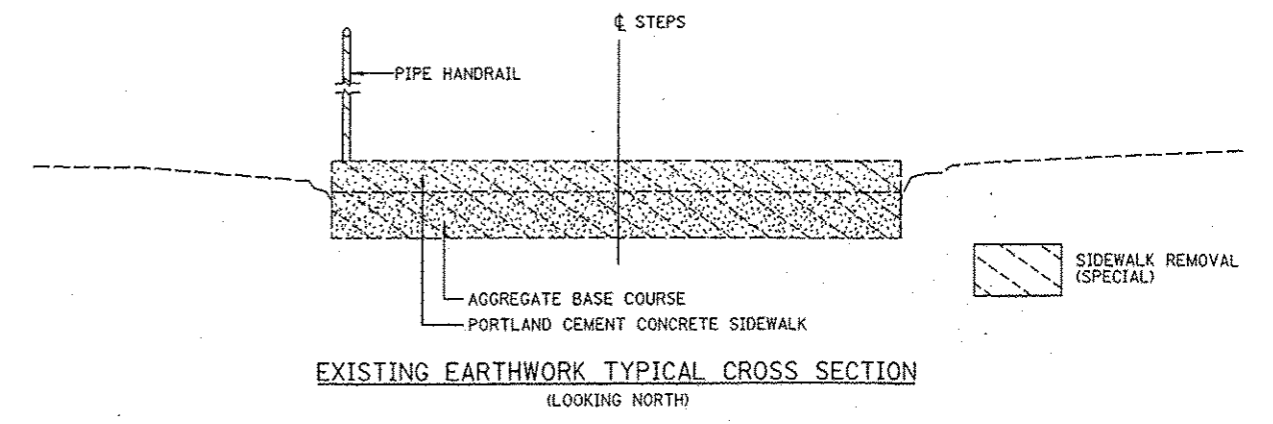
STATE OF ILLINOIS  
DEPARTMENT OF TRANSPORTATION

SUMMARY OF QUANTITIES			
SCALE:	SHEET	OF	SHEETS
STA.	TO STA.		

F.A.P. RTE.	SECTION	COUNTY	TOTAL SHEETS	SHEET NO.
		JO DAVIESS	7	2
			CONTRACT NO. 46260	
ILLINOIS FED. AID PROJECT				

**GENERAL NOTES**

1. ANY REFERENCE TO A STANDARD IN THESE PLANS SHALL BE INTERPRETED TO MEAN THE EDITION AS INDICATED BY THE SUBNUMBER SHOWN IN THE LIST OF THE STANDARDS OR THE COPY INCLUDED IN THESE PLANS.
2. THE CONTRACTOR SHALL NOTIFY THE GALENA STATE HISTORIC SITE MANAGER, MR. TERRY MILLER, AT PHONE NUMBER 815-777-3310 AT LEAST ONE WEEK IN ADVANCE OF MOVING EQUIPMENT, MATERIALS OR WORK FORCES TO THE SITE.
3. WHENEVER A QUESTION ARISES REGARDING THE EXISTENCE OR LOCATION OF A BURIED UTILITY, THE CONTRACTOR SHALL CALL THE TOLL FREE JOINT UTILITY LOCATION INFORMATION FOR EXCAVATORS (J.U.L.I.E.) TELEPHONE NUMBER, 811 OR 1-800-892-0123, BEFORE STARTING EXCAVATION. ALLOW 48 HOURS FOR OTHER THAN EMERGENCY ASSISTANCE.
4. THE CONTRACTOR'S ATTENTION IS DIRECTED TO SECTIONS 201 AND 107 OF THE STANDARD SPECIFICATIONS REGARDING RESPONSIBILITY TO PROTECT EXISTING LANDSCAPING OR PROPERTY NOT SCHEDULED IN THE CONTRACT FOR REMOVAL. ALL DAMAGE TO EXISTING PROPERTY NOT SCHEDULED FOR REMOVAL SHALL BE REPAIRED BY THE CONTRACTOR AT THE CONTRACTOR'S EXPENSE.
5. THE FINAL TOP FOUR INCHES OF SOIL IN ANY RIGHT-OF-WAY AREA DISTURBED BY THE CONTRACTOR MUST BE CAPABLE OF SUPPORTING VEGETATION. THE SOIL MUST BE FROM THE "A" HORIZON (ZERO TO 2' DEEP) OF SOIL PROFILES OF LOCAL SOILS.
6. IT IS ESTIMATED THAT 58 CUBIC YARDS OF EARTH WILL BE HAULED TO THE JOB FROM OUTSIDE THE PROJECT LIMITS. A SHRINKAGE FACTOR OF 25% HAS BEEN USED. UNLESS NOTED OTHERWISE, ALL FILL MATERIAL SHALL BE TOPSOIL THAT MEETS THE REQUIREMENTS OF ARTICLE 1081.05 OF THE STANDARD SPECIFICATIONS. THE COST OF EARTHWORK SHALL BE INCLUDED IN THE UNIT PRICES BID AND NO ADDITIONAL COMPENSATION WILL BE ALLOWED.
7. ALL BORROW/WASTE/USE SITES MUST BE APPROVED BY THE DEPARTMENT PRIOR TO REMOVING ANY MATERIAL FROM THE PROJECT OR INITIATING ANY EARTHMOVING ACTIVITIES, INCLUDING TEMPORARY STOCKPILING OUTSIDE THE LIMITS OF CONSTRUCTION.
8. FERTILIZER SHALL BE APPLIED TO ALL DISTURBED AREAS AND INCORPORATED INTO THE SEEDBED PRIOR TO SEEDING OR PLACEMENT OF SOD AT THE RATE SPECIFIED IN SECTIONS 250 AND 252 OF THE STANDARD SPECIFICATIONS. THIS WORK SHALL BE INCLUDED IN THE COST OF SODDING.
9. ALL SEDIMENT AND EROSION CONTROL SYSTEMS SHALL BE INSPECTED WEEKLY AND WITHIN 24 HOURS AFTER EACH 1/2 INCH OR GREATER RAIN EVENT.
10. ENTRANCES TO THE CONSTRUCTION SITE SHALL BE STABILIZED ACCORDING TO STANDARD DRAWING IL-630 OF THE ILLINOIS URBAN MANUAL.
11. REINFORCEMENT BARS DESIGNATED (E) SHALL BE EPOXY COATED.
12. PLAN DIMENSIONS AND DETAILS RELATIVE TO EXISTING PLANS ARE SUBJECT TO NOMINAL CONSTRUCTION VARIATIONS. THE CONTRACTOR SHALL FIELD VERIFY EXISTING DIMENSIONS AND DETAILS AFFECTING NEW CONSTRUCTION AND MAKE NECESSARY APPROVED ADJUSTMENTS PRIOR TO CONSTRUCTION OR ORDERING OF MATERIALS. SUCH VARIATIONS SHALL NOT BE CAUSE FOR ADDITIONAL COMPENSATION FOR A CHANGE IN SCOPE OF WORK. HOWEVER, THE CONTRACTOR WILL BE PAID FOR THE QUANTITY ACTUALLY FURNISHED AT THE UNIT PRICE BID FOR THE WORK.
13. REMOVAL OF EXISTING PERENNIAL PLANTS WITHIN THE CONSTRUCTION LIMITS SHALL BE INCLUDED IN THE COST OF "PERENNIAL PLANTS, ORNAMENTAL TYPE, GALLON POT". AT THE OPTION OF THE CONTRACTOR, EXISTING PERENNIAL PLANTS MAY BE REPLANTED IN LIEU OF PURCHASING NEW PERENNIAL PLANTS, SUBJECT TO THE APPROVAL OF THE GRANT HOME STATE HISTORIC SITE MANAGER.
14. VINES AND PERENNIAL PLANTS SHALL BE PLANTED ACCORDING TO SECTIONS 253 AND 254 OF THE STANDARD SPECIFICATIONS, RESPECTIVELY. GENUS, SPECIES, AND VARIETY OF PERENNIAL PLANTS SHALL BE ACCORDING TO THE DETAILS IN THE LANDSCAPING PLAN AND THE APPROVAL OF THE GRANT HOME STATE HISTORIC SITE MANAGER.
15. ALL PLANTING BEDS ABUTTING LAWN AREAS ARE TO BE SEPARATED BY SPADE EDGING.
16. SPREAD PRE-EMERGENCE HERBICIDE AND THREE INCHES OF SHREDDED BARK MULCH IN ALL PLANTING BEDS.
17. PROVIDE QUALITY, GENUS, SPECIES, AND VARIETY OF PLANTS COMPLYING WITH APPLICABLE REQUIREMENTS OF ANSI Z60.1, "AMERICAN STANDARD FOR NURSERY STOCK."
18. THE CONTRACTOR SHALL BE RESPONSIBLE FOR COLLECTING AND MAINTAINING AN ELECTRONIC LOG OF ALL STAKEOUT SURVEY THAT IS PERFORMED ON THE JOB, EITHER BY HIM/HER OR ANY SUB-CONTRACTOR PERFORMING THE STAKEOUT. UPON REQUEST, ALL LOGS SHALL BE SUBMITTED TO THE DEPARTMENT. NO ADDITIONAL COMPENSATION WILL BE ALLOWED FOR THIS WORK, BUT SHALL BE CONSIDERED INCLUDED IN THE COST FOR CONSTRUCTION LAYOUT.
19. AS A REFERENCE, A TRANSIT LINE IS SHOWN ORIGINATING WITH STATION 1+00 AT THE NORTHEAST OF THE STONE MASONRY WALL IN THE NORTHEAST CORNER OF THE ASPHALT PARKING LOT SOUTH OF BOUTHILLIER STREET ACROSS FROM THE GRANT HOME STATE HISTORIC SITE. THE TRANSIT LINE RUNS PARALLEL TO THE SOUTHEAST FACE OF THE STONE MASONRY WALL WITH STATIONING INCREASING TOWARDS THE SOUTH-SOUTHWEST.
20. BENCHMARKS ARE PROVIDED ON THE GRADING AND LANDSCAPING PLAN SHEET. FIELD MEASUREMENTS IN FGI FIELD BOOK 3074, PAGES 17-23.



**PROPOSED BRICK SIDEWALK TYPICAL CROSS SECTION**  
(LOOKING WEST)  
\*COST INCLUDED WITH "REMOVE AND RELAY BRICK SIDEWALK"

<p>2709 McGraw Drive Bloomington, Illinois 61704 309-553-0435, 309-553-1571 fax</p>	USER NAME * #USER#	DESIGNED - JCZ	REVISED -	<b>STATE OF ILLINOIS</b> <b>DEPARTMENT OF TRANSPORTATION</b>	<b>TYPICAL SECTIONS AND GENERAL NOTES</b>		F.A.P. RTE.	SECTION	COUNTY	TOTAL SHEETS	SHEET NO.
	PLOT SCALE * #SCALE#	DRAWN - JWK	REVISED -								
	PLOT DATE * #DATE#	CHECKED - MSW	REVISED -								
	DATE - 01-11-13	DATE -	REVISED -								
					SCALE:	SHEET OF SHEETS	STA. TO STA.	ILLINOIS FED. AID PROJECT CONTRACT NO. 46260			

20700220 - POROUS GRANULAR EMBANKMENT	
LOCATION	CU YD
1+00, 0' LT TO 1+00, 23' LT	5
TOTAL	5

XX004018 - REMOVE AND RELAY BRICK SIDEWALK	
LOCATION	SQ FT
1+00, 0' TO 1+00, 22' LT	144
TOTAL	144

X0325153 - MASONRY CLEANING AND TUCKPOINTING	
LOCATION	SQ YD
1+00 TO 1+21	6.5
1+21, 0' RT TO 1+21, 28' RT	6.5
TOTAL	13

28000400 - PERIMETER EROSION BARRIER	
LOCATION	FOOT
1+24, 28' RT TO 2+46, 28, RT	125
2+47, 27' RT TO 2+56, 4' RT	33
2+56, 4' RT TO 2+25, 23' LT	36
2+06, 26' LT TO 1+18, 28 LT	88
TOTAL	282

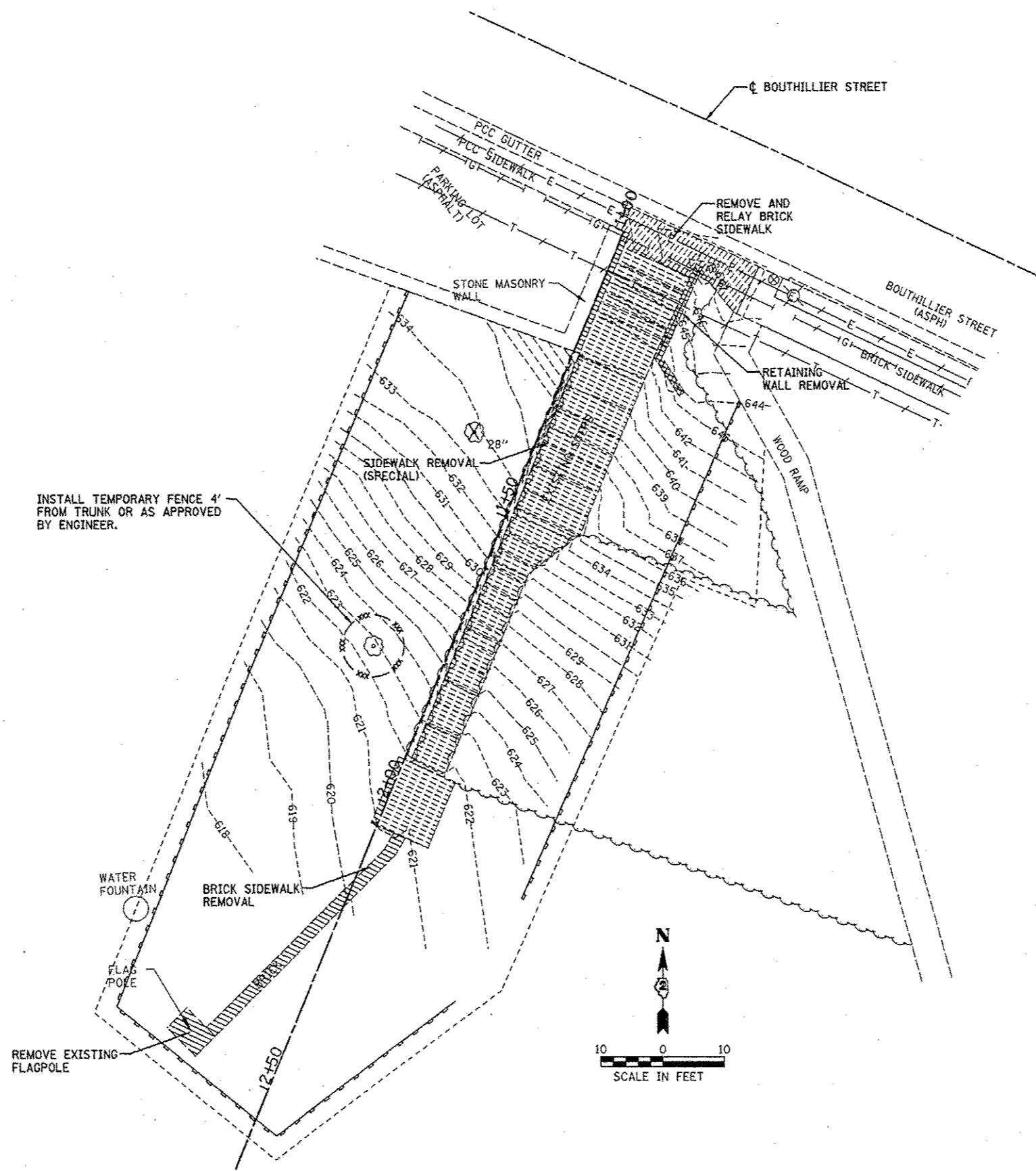
LOCATION	REMOVAL			
	XZ127900	X0325864	X0327070	X4404700
	RETAINING WALL REMOVAL	BRICK SIDEWALK REMOVAL	REMOVE EXISTING FLAGPOLE	SIDEWALK REMOVAL (SPECIAL)
	FOOT	SQ FT	EACH	SQ FT
1+00 TO 2+04				966
2+04, 3' LT TO 5+50, 13' RT		115		
1+00, 13' LT TO 1+21, 18' LT	24			
2+46, 15' RT			1	
TOTAL	24	115	1	966

LOCATION	TREE REMOVAL AND PROTECTION	
	20100210	20101000
	TREE REMOVAL (OVER 15 UNITS DIAMETER)	TEMPORARY FENCE
	UNIT	FOOT
1+40, 12' RT	28	
1+77, 12' RT		32
TOTAL	28	32

LOCATION	LANDSCAPING						
	25200100	25200200	28000250	E20090P2	K0012990	K1005481	X0325788
	SODDING	SUPPLE WATERING	TEMP EROS CONTR SEED	V-EUONY FORT COL 2P	P PL ORNAMENT T GAL P	SHRED BARK MULCH 3	PRE-EMERG HERBICIDE
	SQ YD	UNIT	POUND	EACH	UNIT	SQ YD	SQ YD
GRASS LAWN	650	5	13				
GROUND COVER			2	133			
DAY LILY PERIMETER			1		216		
HOSTA PLANTING BED AND PERIMETER			1		183	127	127
TOTAL	650	5	17	133	399	127	127

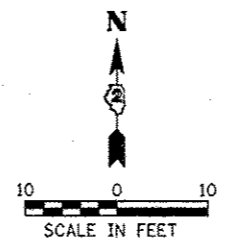
LOCATION	EARTHWORK			
	EARTH EXCAVATION	TOTAL EXCAVATION ADJUSTED FOR 25% SHRINKAGE	EMBANKMENT	BALANCE WASTE (+) SHORTAGE(-)
	CU YD	CU YD	CU YD	CU YD
ENTIRE PROJECT	2	2	60	-58

NOTE:  
EARTHWORK QUANTITIES ARE ESTIMATED. EARTHWORK SHALL BE CONSTRUCTED ACCORDING TO THE TYPICAL SECTION AND TO THE LINES AND GRADES SHOWN ON THE GRADING PLAN.



INSTALL TEMPORARY FENCE 4' FROM TRUNK OR AS APPROVED BY ENGINEER.

LEGEND	
	PERIMETER EROSION BARRIER
	TEMPORARY FENCE
	REMOVE AND RELAY BRICK SIDEWALK
	RETAINING WALL REMOVAL
	SIDEWALK REMOVAL (SPECIAL)
	BRICK SIDEWALK REMOVAL
	LIMITS OF CONSTRUCTION
	TREE REMOVAL (SIZE)



**Farnsworth GROUP, INC.**  
 2709 McQueen Drive  
 Bloomington, Illinois 61704  
 309/533-8437, 309/533-1074 fax

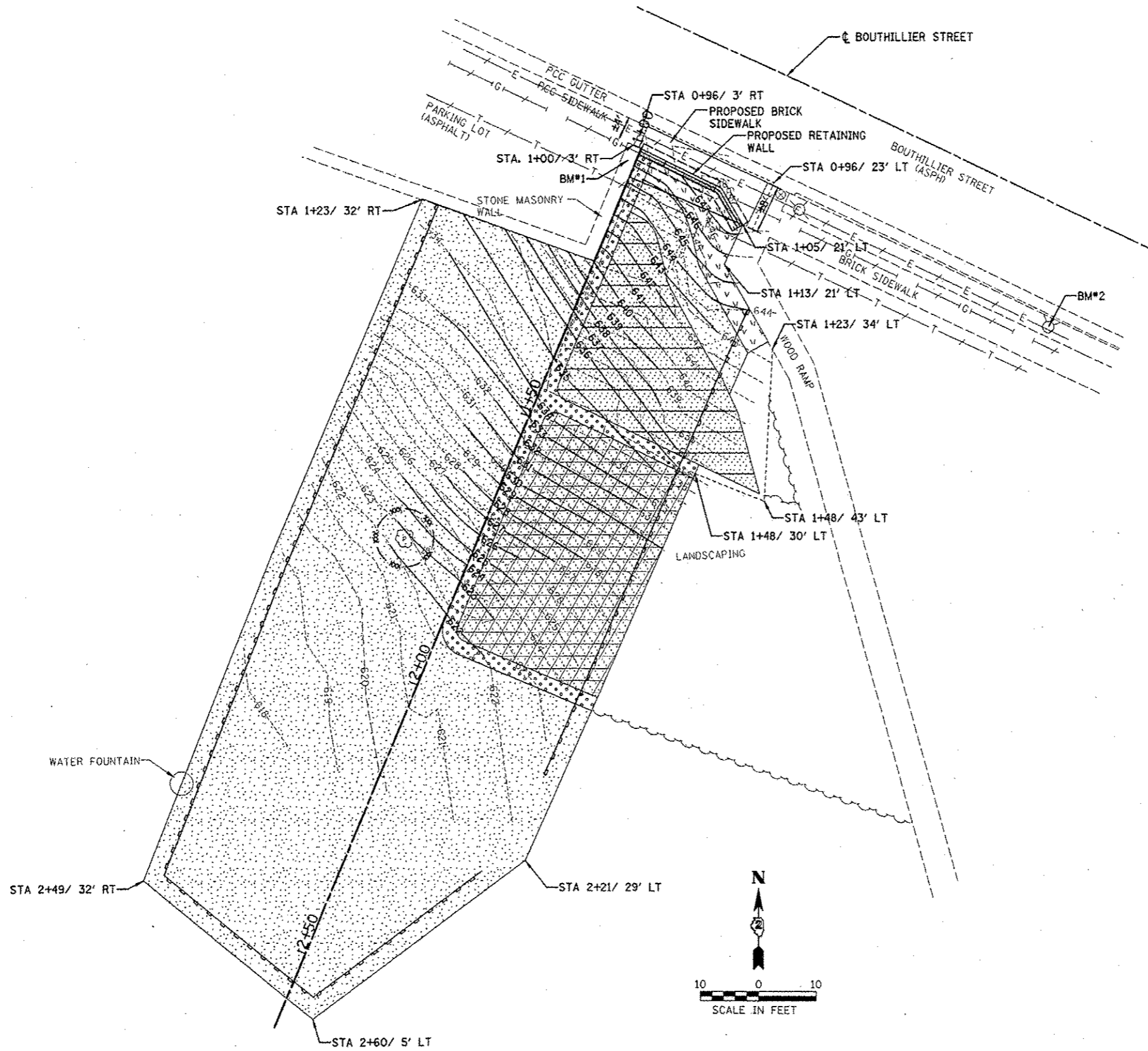
USER NAME - #USER#	DESIGNED - JCZ	REVISED -
PLOT SCALE - #SCALE#	DRAWN - JWK	REVISED -
PLOT DATE - #DATE#	CHECKED - MSW	REVISED -
	DATE - 01-11-13	REVISED -

DESIGNED - JCZ	REVISED -
DRAWN - JWK	REVISED -
CHECKED - MSW	REVISED -
DATE - 01-11-13	REVISED -

**STATE OF ILLINOIS  
 DEPARTMENT OF TRANSPORTATION**

<b>REMOVAL PLAN</b>			
SCALE:	SHEET	OF	SHEETS
			STA. TO STA.

F.A.P. RTE.	SECTION	COUNTY	TOTAL SHEETS	SHEET NO.
		JO DAVIESS	7	5
CONTRACT NO. 46260				
ILLINOIS FED. AID PROJECT				



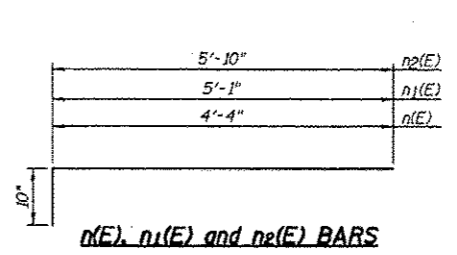
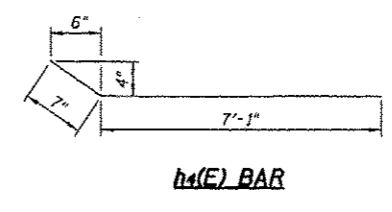
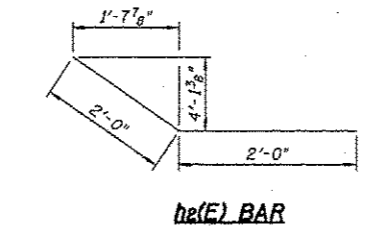
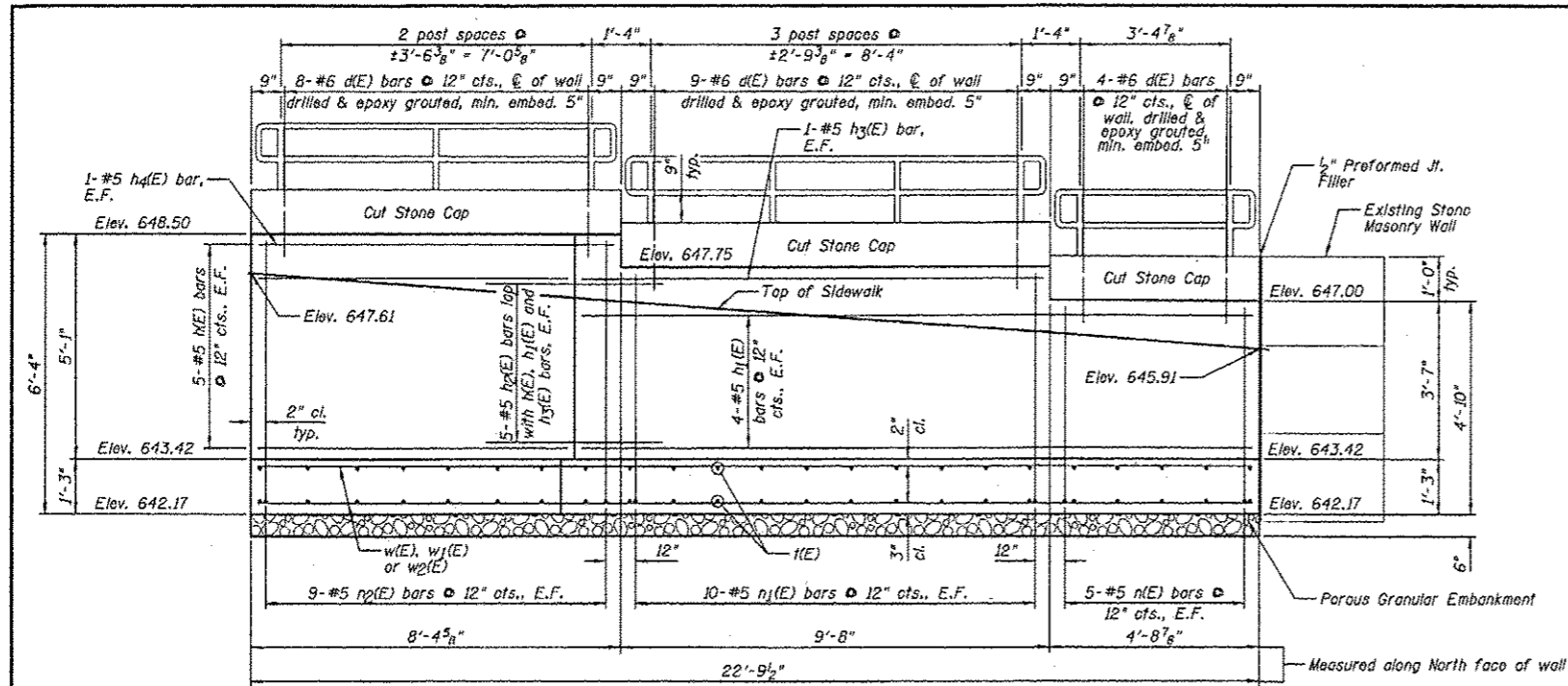
BENCHMARK #1 STA 1+00, 1' RT  
 ELEV = 648.01  
 TOP CENTER OF END OF STONE MASONRY WALL AT  
 NORTHEAST CORNER OF ASPHALT PARKING LOT SOUTH  
 OF BOUTHILLIER STREET ACROSS FROM THE GRANT  
 HOME STATE HISTORIC SITE.

BENCHMARK #2 STA 0+99, 77' LT  
 ELEV = 655.14  
 TOP OF FIRE HYDRANT SOUTH OF BOUTHILLIER STREET  
 AND NORTH OF BRICK SIDEWALK, ±50' EAST-SOUTHEAST  
 OF WOOD RAMP ACROSS FROM THE GRANT HOME STATE  
 HISTORIC SITE.

LEGEND	
	PERIMETER EROSION BARRIER
	TEMPORARY FENCE
	LIMITS OF CONSTRUCTION
	"GRASS LAWN": TEMPORARY EROSION CONTROL SEEDING, SODDING AND SUPPLEMENTAL WATERING
	"GROUND COVER": TEMPORARY EROSION CONTROL SEEDING, AND EUONYMUS FORTUNEI VAR. COLORATUS (PURPLE LEAF WINTERCREEPER) @ 2'-6" SPACING
	"DAY LILY PERIMETER": TEMPORARY EROSION CONTROL SEEDING, AND PERENNIAL PLANTS ORNAMENTAL TYPE (DAY LILIES) @ 1'-0" SPACING
	"HOSTA PERIMETER": TEMPORARY EROSION CONTROL SEEDING, AND PERENNIAL PLANTS, ORNAMENTAL TYPE (HOSTAS) @ 1'-6" SPACING
	"HOSTA PLANTING BED": PRE-EMERGENCE HERBICIDE, SHREDDED BARK MULCH 3" AND PERENNIAL PLANTS, ORNAMENTAL TYPE (HOSTAS) @ 4'-0" SPACING

<p>Farnsworth GROUP, INC. 2709 McGraw Drive Bloomington, Illinois 61704 309/663-9433, 309/663-1571 fax</p>	USER NAME * #USER#	DESIGNED - JCZ	REVISED -	<b>STATE OF ILLINOIS</b> <b>DEPARTMENT OF TRANSPORTATION</b>	<b>GRADING AND LANDSCAPING PLAN</b>			F.A.P. RTE.	SECTION	COUNTY	TOTAL SHEETS	SHEET NO.
	PLOT SCALE * #SCALE#	DRAWN - JWK	REVISED -									
	PLOT DATE * #DATE#	CHECKED - MSW	REVISED -									
	DATE - 01-11-13	REVISED -										
				SCALE:	SHEET	OF	SHEETS	STA.	TO	STA.	ILLINOIS FED. AID PROJECT CONTRACT NO. 46260	



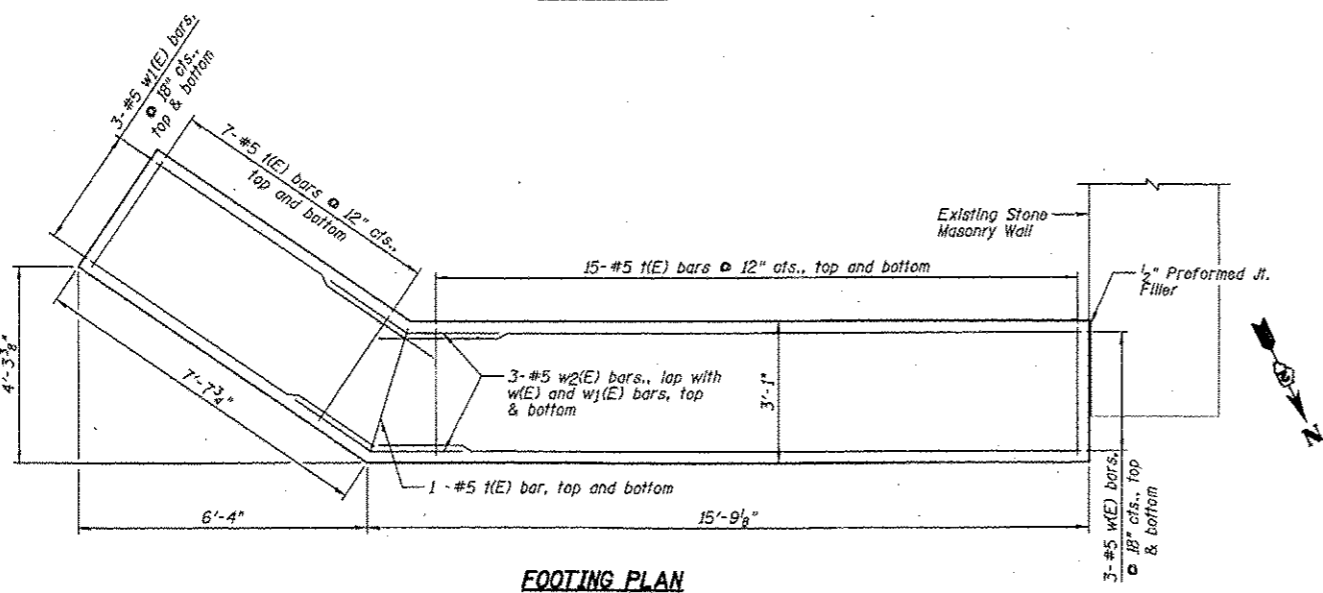
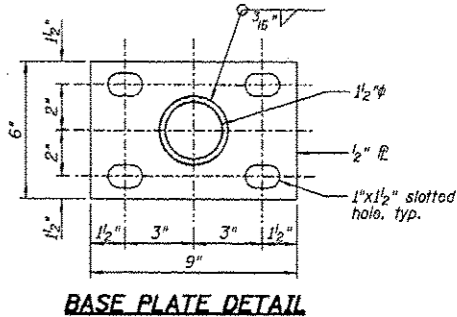
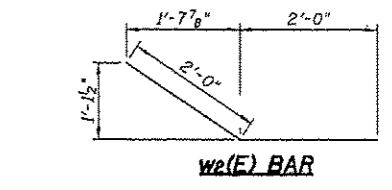
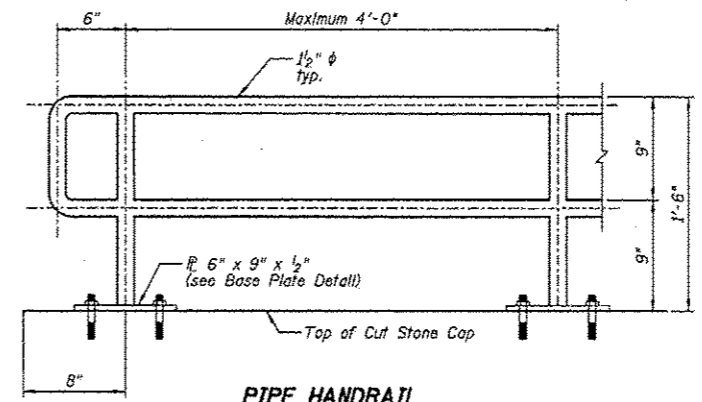
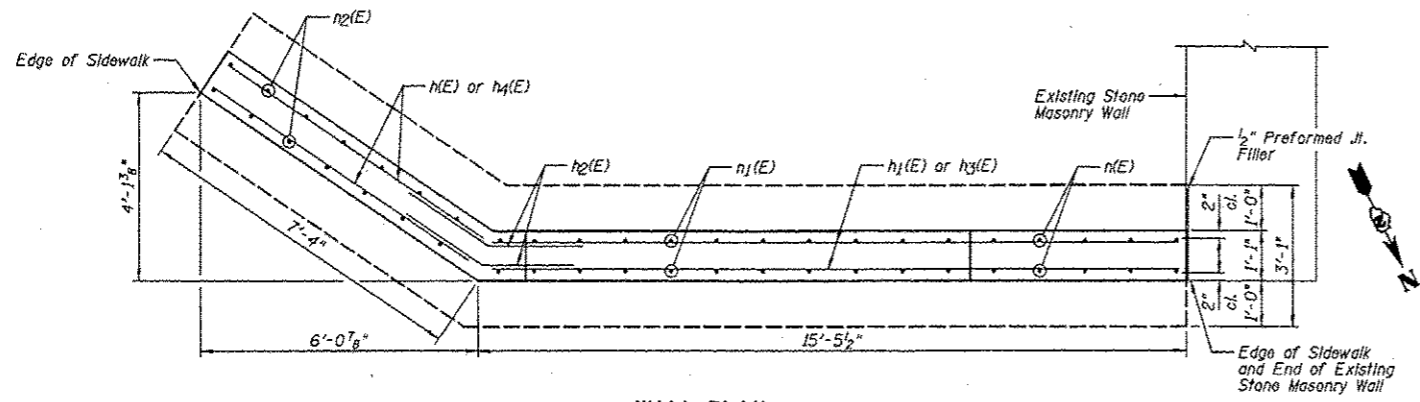


**BILL OF MATERIAL**

Bar	No.	Size	Length	Shape
d(E)	21	#6	1'-0"	
h <sub>1</sub> (E)	10	#5	7'-0"	
h <sub>2</sub> (E)	8	#5	15'-0"	
h <sub>3</sub> (E)	10	#5	4'-0"	
h <sub>4</sub> (E)	2	#5	9'-4"	
h <sub>4</sub> (E)	2	#5	8'-0"	
n(E)	10	#5	5'-2"	
n <sub>1</sub> (E)	20	#5	5'-11"	
n <sub>2</sub> (E)	18	#5	6'-8"	
w(E)	46	#5	2'-9"	
w <sub>1</sub> (E)	6	#5	15'-7"	
w <sub>2</sub> (E)	6	#5	7'-3"	
w <sub>2</sub> (E)	6	#5	4'-0"	

Item	Unit	Quantity
Porous Granular Embankment	Cu Yd	5
Concrete Structures	Cu Yd	7.3
Reinforcement Bars, Epoxy Coated	Pound	910
Pipe Handrail	Foot	23
Cut Stone Cap	Sq Ft	23



*Mark S. Wylie* Date 1/11/13  
 MARK S. WYLIE  
 ILLINOIS STRUCTURAL ENGINEER  
 NO. 081-005002  
 Exp. Date 11/30/14

- NOTES:**
- 1.) E.F. denotes Each Face.
  - 2.) Calculated maximum soil pressure = 1,200 psf.
  - 3.) All posts, railing, splices, anchor devices, and bent plates shall be painted using the Shop and Field Applied Paint System or the Shop Applied Paint System, according to Section 506 of the Standard Specifications. Color will be chosen by the Grant Home State Historic Site Manager.
  - 4.) Drill and epoxy grout d(E) bars and Pipe Handrail Base Plate Anchors in appropriate drilled holes according to Section 5B4 of the Standard Specifications. Space the d(E) bars as shown or as necessary to install a minimum of one d(E) bar per capstone, along the center line of the wall. The type of epoxy grout shall be approved by the Engineer.
  - 5.) The selection of the Cut Stone Caps from the existing retaining wall and the arrangement of the Cut Stone Caps on the proposed retaining wall shall be approved by the Engineer. The Cut Stone Caps shall be of a uniform height, preferably  $\pm 1'-0"$ . If a different height is approved, the Pipe Handrail height shall be adjusted accordingly.
  - 6.) Preformed Joint Filler shall meet the requirements of Section 1051 of the Standard Specifications.

<b>Farnsworth GROUP, INC.</b> 2700 McGraw Drive Brookings, Illinois 61724 309/553-8433, 309/553-1271 fax	USER NAME - #USER#	DESIGNED - JCZ	REVISED -	<b>STATE OF ILLINOIS</b> <b>DEPARTMENT OF TRANSPORTATION</b>	<b>RETAINING WALL DETAILS</b>		F.A.P. RTE.	SECTION	COUNTY	TOTAL SHEETS	SHEET NO.
	PLOT SCALE - #SCALE#	DRAWN - JWK	REVISED -		JO DAVIESS	7	7				
	PLOT DATE - #DATE#	CHECKED - MSW	REVISED -		CONTRACT NO. 46260						
	DATE - 01-11-13	REVISED -	SCALE:		SHEET	OF	SHEETS	STA.	TO	STA.	ILLINOIS FED. AID PROJECT