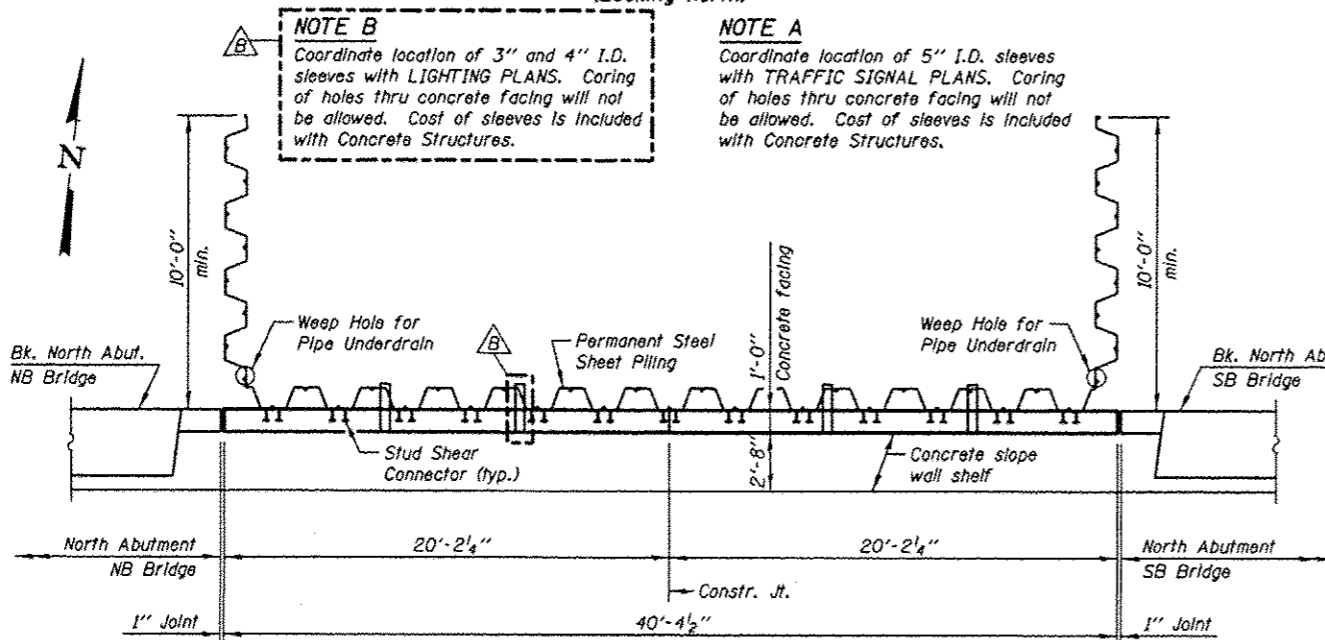


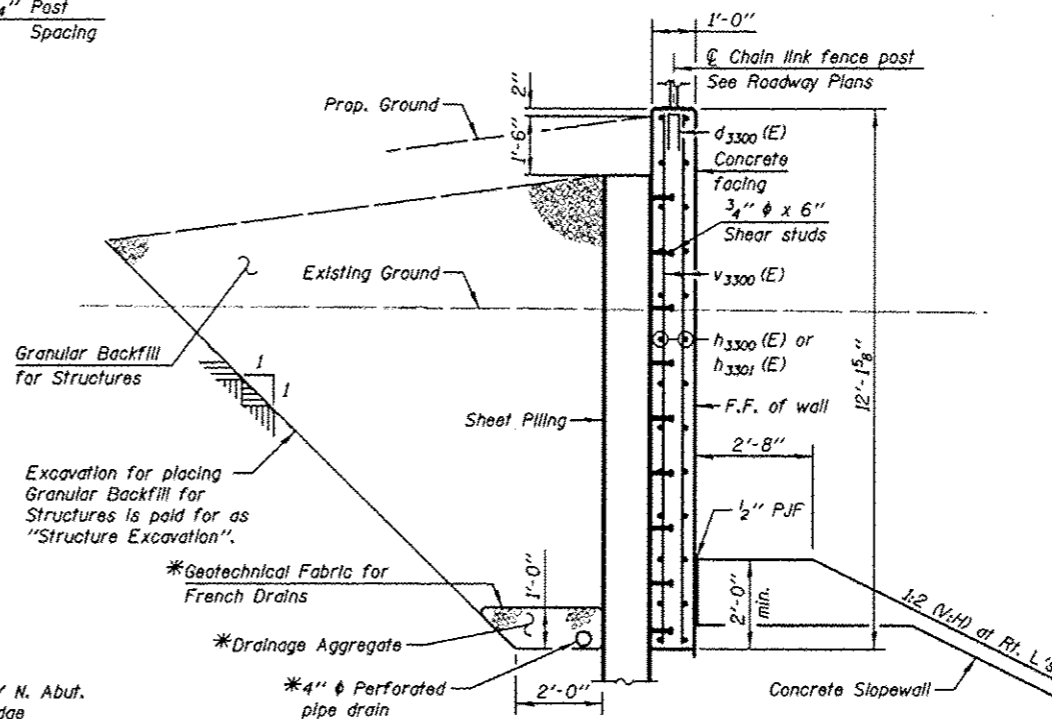
**ELEVATION - SOUTH FACE**  
(Looking North)



**PLAN**

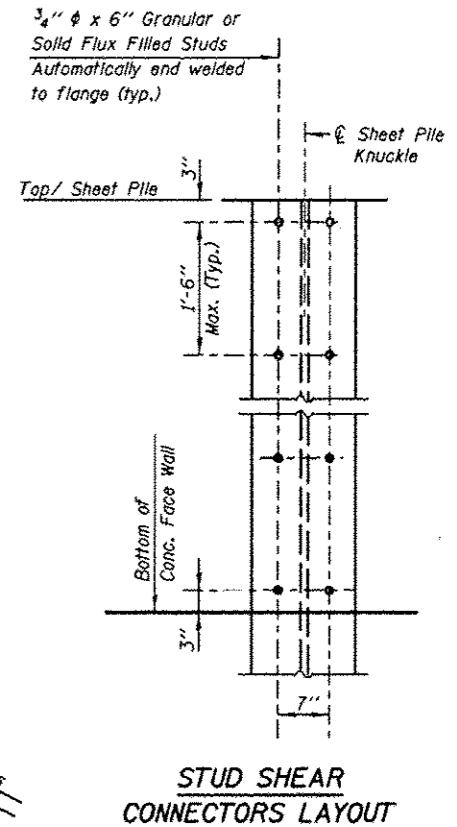
**DESIGN CRITERIA**

Required Section Modulus = 28.6 in<sup>3</sup>/ft  
Minimum Tip Elevation = 698.00



**SECTION THRU SHEET PILING WALL**

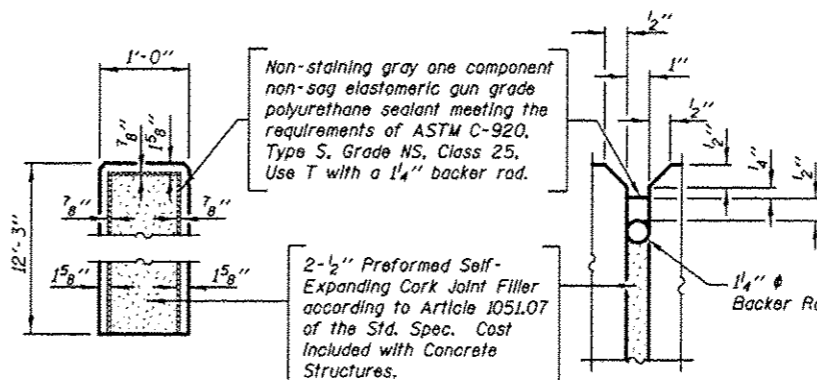
\*Included in the cost of Pipe Underdrains for Structures.



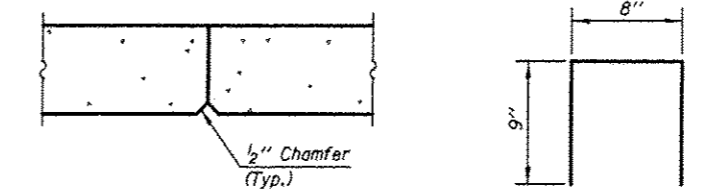
**STUD SHEAR CONNECTORS LAYOUT**

**NOTE B**  
Coordinate location of 3\"/>

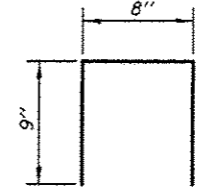
**NOTE A**  
Coordinate location of 5\"/>



**1\"/>**



**CONSTRUCTION JOINT DETAIL**



**BAR d<sub>3300</sub>(E)**

**BILL OF MATERIAL**

BAR	NO.	SIZE	LENGTH	SHAPE
d3300(E)	8	#4	2'-2"	□
h3300(E)	52	#5	19'-10"	—
h3301(E)	26	#5	6'-0"	—
v3300(E)	84	#5	11'-9"	—
Structure Excavation			Cu. Yd.	91.0
Concrete Structures			Cu. Yd.	20.0
Stud Shear Connectors			Each	234
Reinforcement Bars, Epoxy Coated			Pound	2280
Permanent Steel Sheet Piling			Sq. Ft.	2183.0
Granular Backfill for Structures			Cu. Yd.	112.0
Pipe Underdrains for Structures 4"			Foot	40.0

**NOTES**

See Sheet SA-45, SA-47 and SA-48 for North Abutment Details.

**MIN. BAR LAP**  
#5 - 2'-5"

**TOLLWAY WALL EW123.3R,WB**