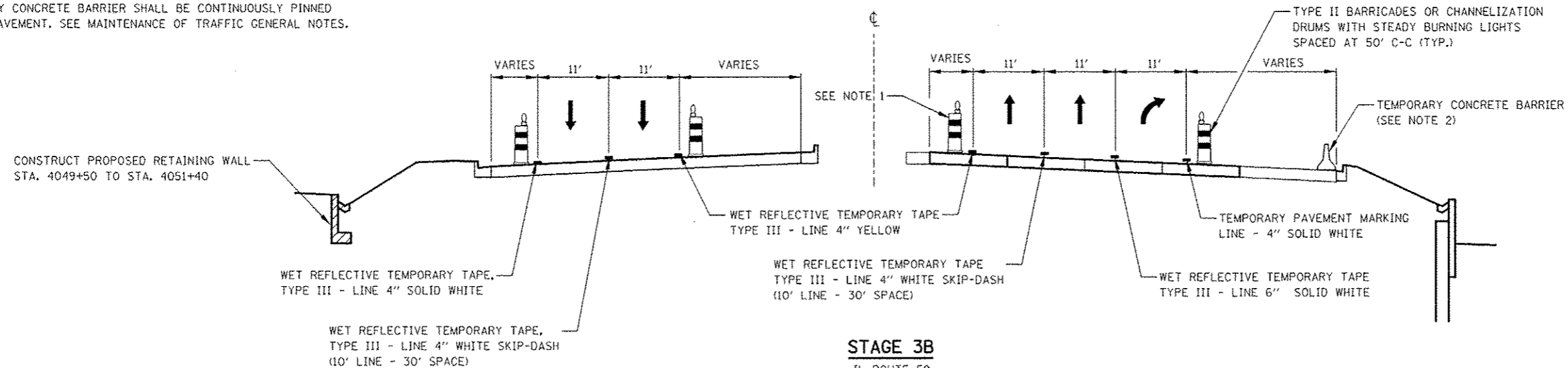


STAGE 3 & STAGE 3A

IL ROUTE 59
STA. 4045+00 TO STA. 4054+00

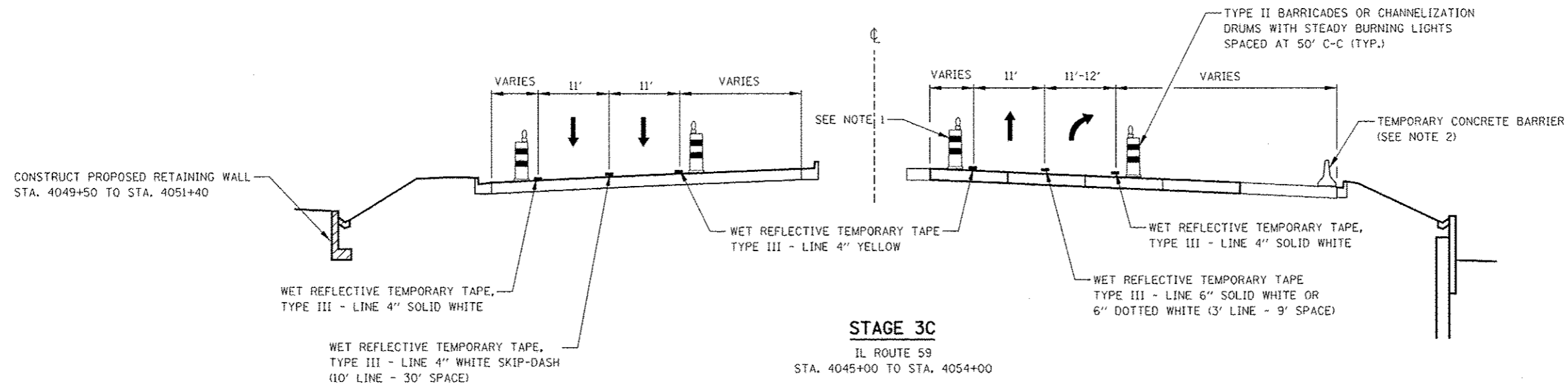
NOTES

1. PAVEMENT DROP-OFF SHALL NOT EXCEED 24 INCHES BEHIND TYPE II BARRICADES OR CHANNELIZATION DRUMS. TEMPORARY GRADING, IF REQUIRED TO REDUCE DROP-OFF HEIGHT, DURING CONSTRUCTION SHALL BE CONSIDERED INCLUDED IN THE COST FOR TRAFFIC CONTROL AND PROTECTION, (SPECIAL).
2. TEMPORARY CONCRETE BARRIER SHALL BE CONTINUOUSLY PINNED TO THE PAVEMENT. SEE MAINTENANCE OF TRAFFIC GENERAL NOTES.



STAGE 3B

IL ROUTE 59
STA. 4045+00 TO STA. 4054+00



STAGE 3C

IL ROUTE 59
STA. 4045+00 TO STA. 4054+00

FILE NAME: #	USER NAME: #	DESIGNED: PJO	REVISED: -	STATE OF ILLINOIS DEPARTMENT OF TRANSPORTATION	MAINTENANCE OF TRAFFIC TYPICAL SECTIONS ILLINOIS ROUTE 59			F.A.P. RTE.	SECTION	COUNTY	TOTAL SHEETS	SHEET NO.
#JLCL#		DRAWN: KES	REVISED: -		338	(112 & 113) WRS-5	DUPAGE	963	100			
		CHECKED: JCM	REVISED: -		SCALE: SHEET NO. 2 OF 17 SHEETS STA. 4045+00 TO STA. 4054+00			CONTRACT NO. 60131				
		DATE: 10/15/2012	REVISED: -		ILLINOIS FED. AID PROJECT							