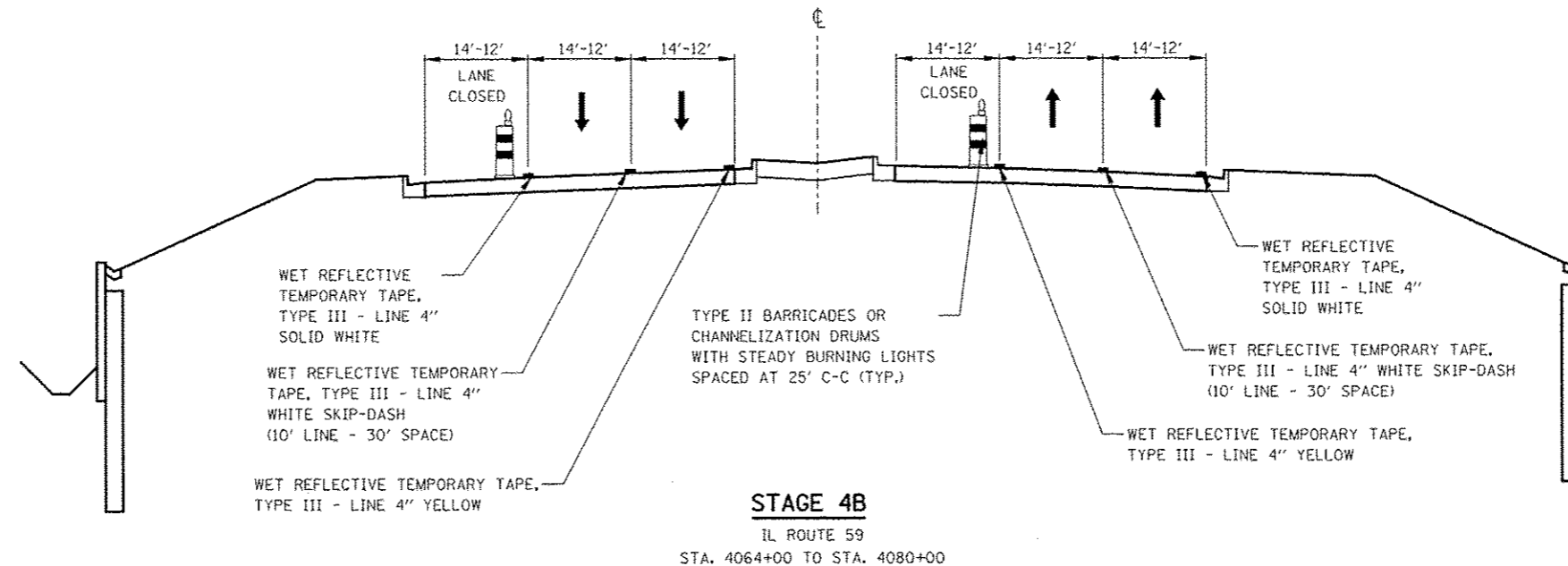
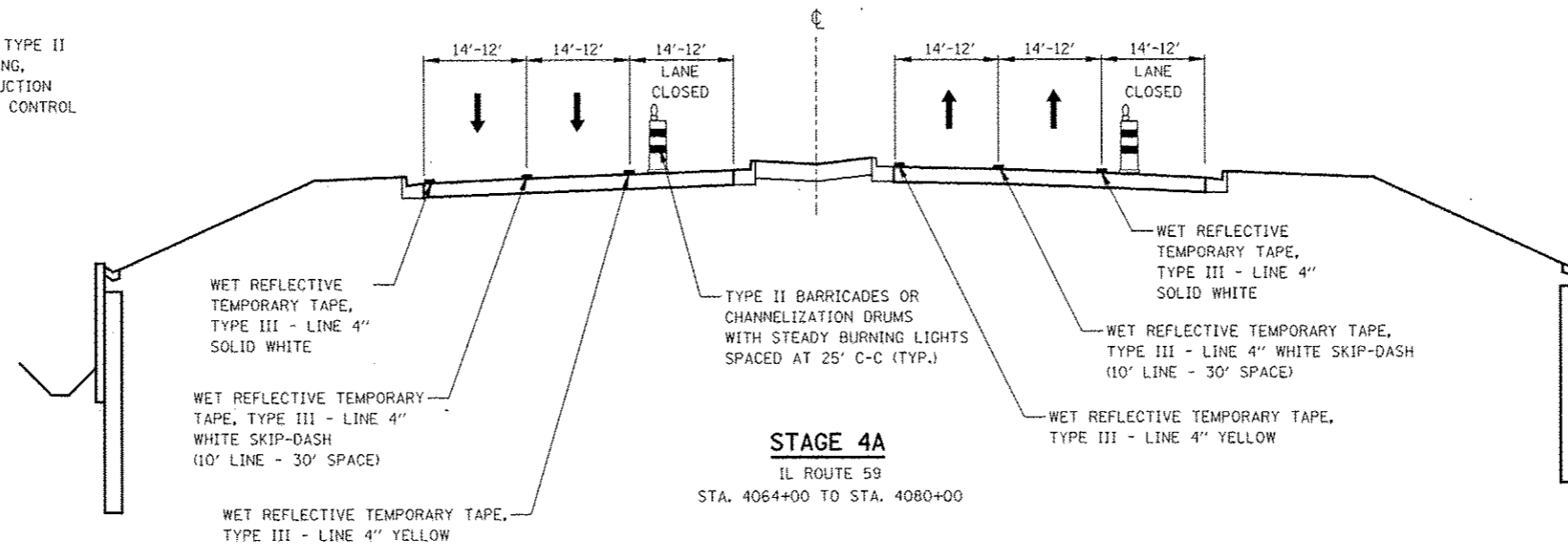


NOTES

1. PAVEMENT DROP-OFF SHALL NOT EXCEED 24 INCHES BEHIND TYPE II BARRICADES OR CHANNELIZATION DRUMS. TEMPORARY GRADING, IF REQUIRED TO REDUCE DROP-OFF HEIGHT, DURING CONSTRUCTION SHALL BE CONSIDERED INCLUDED IN THE COST FOR TRAFFIC CONTROL AND PROTECTION, (SPECIAL).



FILE NAME	USER NAME = BUSERR	DESIGNED PJO	REVISED	STATE OF ILLINOIS DEPARTMENT OF TRANSPORTATION	MAINTENANCE OF TRAFFIC TYPICAL SECTIONS ILLINOIS ROUTE 59	F.A.P. RTE.	SECTION	COUNTY	TOTAL SHEETS	SHEET NO.	
#FILES		DRAWN KES	REVISED			338	(112 & 113) WRS-5	DUPAGE	963	108	
PLT SCALE = 1/8"=1'-0"		CHECKED JCM	REVISED			CONTRACT NO. 60E31					
PLT DATE = 10/15/2018		DATE 10/15/2018	REVISED			ILLINOIS FED. AID PROJECT					
				SCALE:		SHEET NO. 10 OF 17 SHEETS		STA. 4064+00 TO STA. 4080+00			