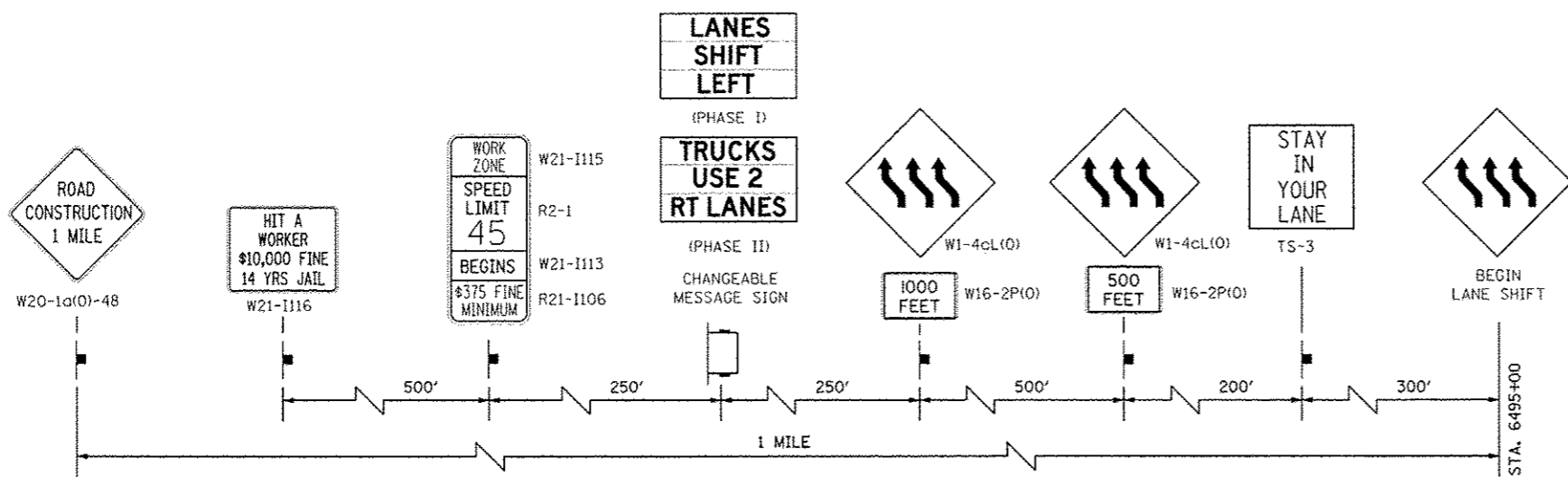


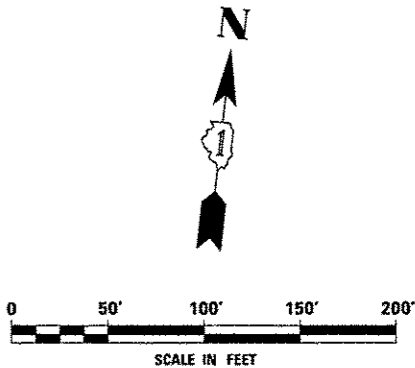
TOLLWAY TRAFFIC CONTROL

TRAFFIC CONTROL ON INTERSTATE 88 AND AT RAMP TERMINALS SHALL BE IN ACCORDANCE WITH THE FOLLOWING ILLINOIS TOLLWAY STANDARDS:

- E1 CONSTRUCTION SIGNS
- E2 LANE CLOSURE DETAILS
- E3 SHOULDER CLOSURE DETAILS
- E4 MAINTENANCE OF TRAFFIC REVERSE CURVE
- E5 TEMPORARY GORE DETAILS



ADVANCE WARNING SIGN SEQUENCE DETAIL
EASTBOUND



FILE NAME -	USER NAME - ENUSER9	DESIGNED - PJO	REVISED -	STATE OF ILLINOIS DEPARTMENT OF TRANSPORTATION	MAINTENANCE OF TRAFFIC - STAGE 1 INTERSTATE 88	F.A.P. RTE.	SECTION	COUNTY	TOTAL SHEETS	SHEET NO.	
#FILE#		DRAWN - KES	REVISED -			338	(112 & 113) WRS-5	DUPAGE	963	128	
PILOT SCALE / SCALE#		CHECKED - JCM	REVISED -			CONTRACT NO. 60131					
PILOT DATE / DATE#		DATE - 10/15/2012	REVISED -			ILLINOIS FED. AID PROJECT					
					SCALE:	SHEET NO. 12 OF 118 SHEETS		STA. 6488+50 TO STA. 6496+00			