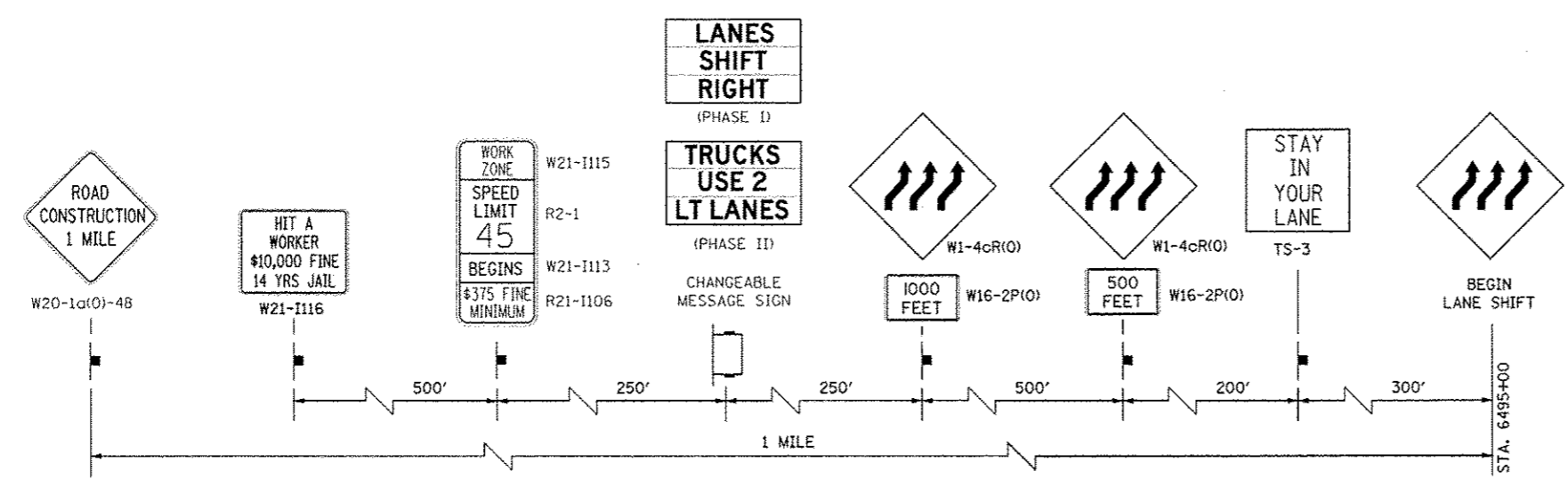


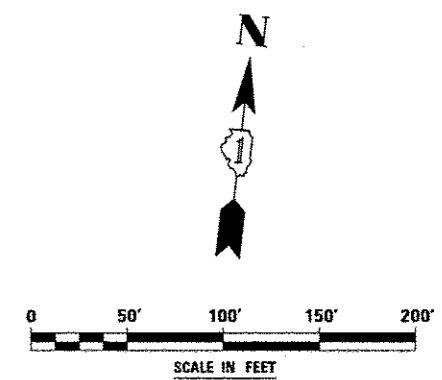
TOLLWAY TRAFFIC CONTROL

TRAFFIC CONTROL ON INTERSTATE 88 AND AT RAMP TERMINALS SHALL BE IN ACCORDANCE WITH THE FOLLOWING ILLINOIS TOLLWAY STANDARDS:

- E1 CONSTRUCTION SIGNS
- E2 LANE CLOSURE DETAILS
- E3 SHOULDER CLOSURE DETAILS
- E4 MAINTENANCE OF TRAFFIC REVERSE CURVE
- E5 TEMPORARY GORE DETAILS



ADVANCE WARNING SIGN SEQUENCE DETAIL
EASTBOUND



FILE NAME	USER NAME = RUSORR	DESIGNED PJO	REVISED -	STATE OF ILLINOIS DEPARTMENT OF TRANSPORTATION	MAINTENANCE OF TRAFFIC - STAGE 1A INTERSTATE 88	F.A.P. RTE. 338	SECTION (112 & 113) WRS-5	COUNTY DUPAGE	TOTAL SHEETS 963	SHEET NO. 142	
FILE NO.	PLGT SCALE = 800/112	DRAWN KES	REVISED -		SCALE:	SHEET NO. 26 OF 118 SHEETS	STA. 6488+50 TO STA. 6496+00		CONTRACT NO. 60131		
	PLGT DATE = 8/24/12	CHECKED JCM	REVISED -				ILLINOIS FED. AID PROJECT				
		DATE 10/15/2012	REVISED -								