

**MOT PAVEMENT MARKING LEGEND**

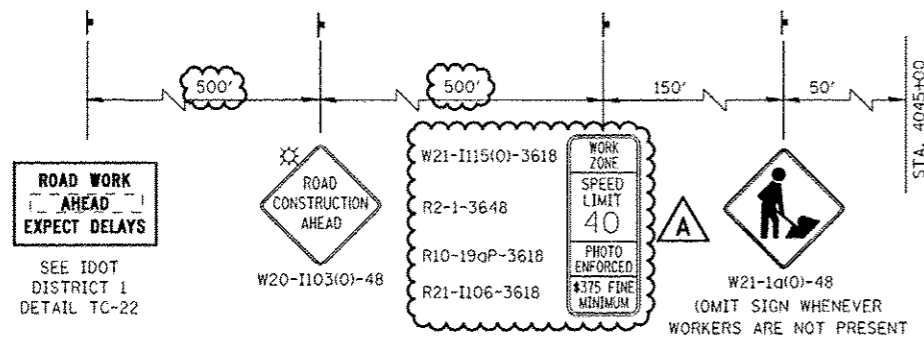
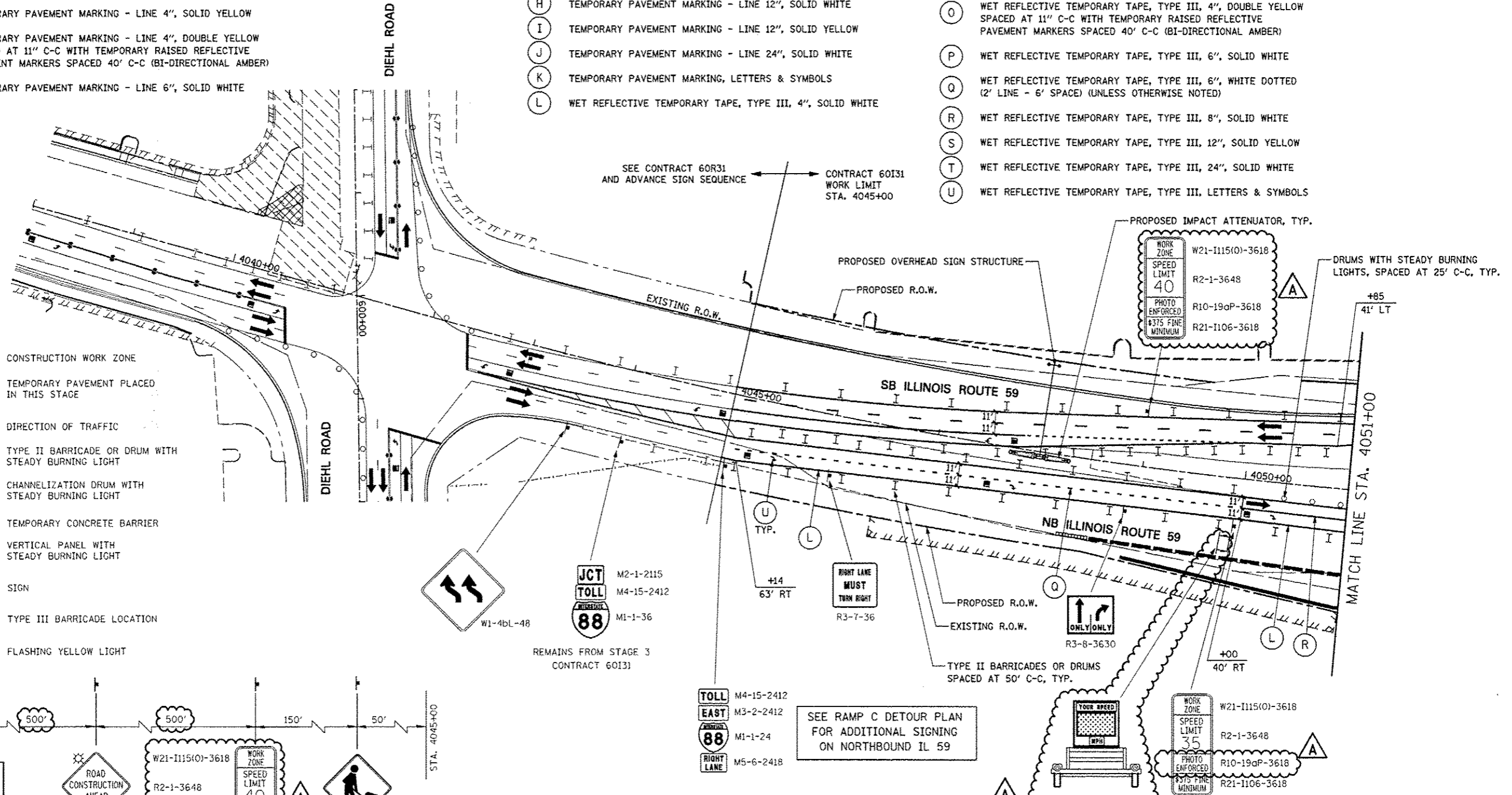
- (A) TEMPORARY PAVEMENT MARKING - LINE 4", SOLID WHITE
- (B) TEMPORARY PAVEMENT MARKING - LINE 4", WHITE SKIP-DASH (10' LINE - 30' SPACE)
- (C) TEMPORARY PAVEMENT MARKING - LINE 4", SOLID YELLOW
- (D) TEMPORARY PAVEMENT MARKING - LINE 4", DOUBLE YELLOW SPACED AT 11" C-C WITH TEMPORARY RAISED REFLECTIVE PAVEMENT MARKERS SPACED 40' C-C (BI-DIRECTIONAL AMBER)
- (E) TEMPORARY PAVEMENT MARKING - LINE 6", SOLID WHITE

- (F) TEMPORARY PAVEMENT MARKING - LINE 6", WHITE DOTTED (2' LINE - 6' SPACE) (UNLESS OTHERWISE NOTED)
- (G) TEMPORARY PAVEMENT MARKING - LINE 8", SOLID WHITE
- (H) TEMPORARY PAVEMENT MARKING - LINE 12", SOLID WHITE
- (I) TEMPORARY PAVEMENT MARKING - LINE 12", SOLID YELLOW
- (J) TEMPORARY PAVEMENT MARKING - LINE 24", SOLID WHITE
- (K) TEMPORARY PAVEMENT MARKING, LETTERS & SYMBOLS
- (L) WET REFLECTIVE TEMPORARY TAPE, TYPE III, 4", SOLID WHITE

- (M) WET REFLECTIVE TEMPORARY TAPE, TYPE III, 4", WHITE SKIP-DASH (10' LINE - 30' SPACE)
- (N) WET REFLECTIVE TEMPORARY TAPE, TYPE III, 4", SOLID YELLOW
- (O) WET REFLECTIVE TEMPORARY TAPE, TYPE III, 4", DOUBLE YELLOW SPACED AT 11" C-C WITH TEMPORARY RAISED REFLECTIVE PAVEMENT MARKERS SPACED 40' C-C (BI-DIRECTIONAL AMBER)
- (P) WET REFLECTIVE TEMPORARY TAPE, TYPE III, 6", SOLID WHITE
- (Q) WET REFLECTIVE TEMPORARY TAPE, TYPE III, 6", WHITE DOTTED (2' LINE - 6' SPACE) (UNLESS OTHERWISE NOTED)
- (R) WET REFLECTIVE TEMPORARY TAPE, TYPE III, 8", SOLID WHITE
- (S) WET REFLECTIVE TEMPORARY TAPE, TYPE III, 12", SOLID YELLOW
- (T) WET REFLECTIVE TEMPORARY TAPE, TYPE III, 24", SOLID WHITE
- (U) WET REFLECTIVE TEMPORARY TAPE, TYPE III, LETTERS & SYMBOLS

**LEGEND**

- CONSTRUCTION WORK ZONE
- TEMPORARY PAVEMENT PLACED IN THIS STAGE
- DIRECTION OF TRAFFIC
- TYPE II BARRICADE OR DRUM WITH STEADY BURNING LIGHT
- CHANNELIZATION DRUM WITH STEADY BURNING LIGHT
- TEMPORARY CONCRETE BARRIER
- VERTICAL PANEL WITH STEADY BURNING LIGHT
- SIGN
- TYPE III BARRICADE LOCATION
- FLASHING YELLOW LIGHT



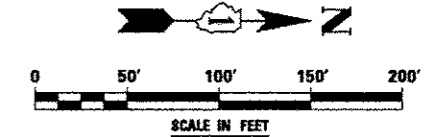
**ADVANCE SIGNING FOR NORTHBOUND IL ROUTE 59**

(SPACING MAY VARY DUE TO FIELD CONDITIONS)  
COORDINATE WITH CONTRACT 60R31, SEE NOTE 1

**NOTES**

1. ADVANCE SIGN LOCATIONS SHALL BE COORDINATED WITH ADJACENT CONTRACT. "ROAD CONSTRUCTION AHEAD" SIGN SHALL BE PLACED WHEN WARRANTED BY WORK ZONE CONDITIONS OR AS DIRECTED BY THE ENGINEER.
2. LOCATION OF TRAILER MOUNTED SPEED INDICATOR SIGN SHALL BE COORDINATED WITH THE ENGINEER AND WILL BE MEASURED AND PAID FOR SEPARATELY UNDER SPEED INDICATOR SIGN.

SEE RAMP C DETOUR PLAN FOR ADDITIONAL SIGNING ON NORTHBOUND IL 59



FILE NAME:	USER NAME = #USER#	DESIGNED PJO	REVISED -ADDENDUM A 12/17/2012
#FILE#		DRAWN KES	REVISED -
	PLOT SCALE = #SCALE#	CHECKED JCM	REVISED -
	PLOT DATE = #DATE#	DATE 10/15/2012	REVISED -

**STATE OF ILLINOIS  
DEPARTMENT OF TRANSPORTATION**

**MAINTENANCE OF TRAFFIC - STAGE 3C  
ILLINOIS ROUTE 59**

SCALE: SHEET NO. 92 OF 116 SHEETS STA. 4038+00 TO STA. 4051+00

F.A.P. RTE.	SECTION	COUNTY	TOTAL SHEETS	SHEET NO.
338	(112 & 113) WRS-5	DUPAGE	963	208
CONTRACT NO. 60131			ILLINOIS FED. AID PROJECT	