

← Warrenville
 ← West Chicago
 Naperville →
 Plainfield →

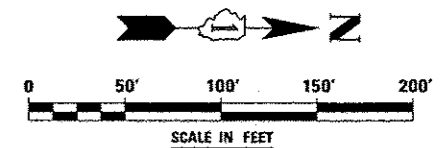
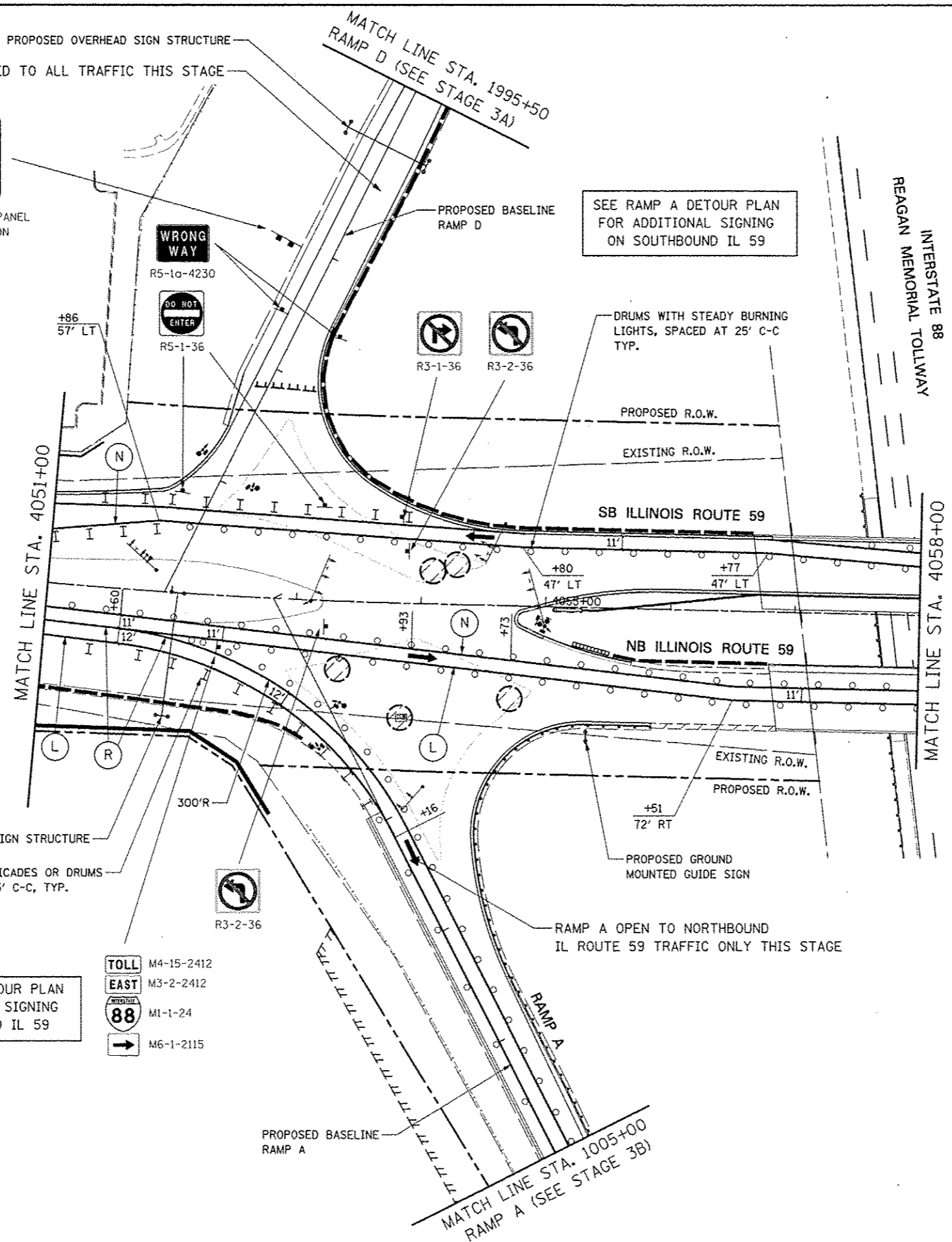
RELOCATE EXISTING SIGN PANEL
 TO PERMANENT LOCATION
 (SEE SIGNING PLANS)

SEE RAMP A DETOUR PLAN
 FOR ADDITIONAL SIGNING
 ON SOUTHBOUND IL 59

PROPOSED OVERHEAD SIGN STRUCTURE
 TYPE II BARRICADES OR DRUMS
 SPACED AT 25' C-C, TYP.

SEE RAMP C DETOUR PLAN
 FOR ADDITIONAL SIGNING
 ON NORTHBOUND IL 59

- M4-15-2412
- M3-2-2412
- M1-1-24
- M6-1-2115



FILE NAME #P1101.6	USER NAME #4058#	DESIGNED PJO	REVISED -	STATE OF ILLINOIS DEPARTMENT OF TRANSPORTATION	MAINTENANCE OF TRAFFIC - STAGE 3C ILLINOIS ROUTE 59	F.A.P. RTE. 338	SECTION 012 & 113) WRS-5	COUNTY DUPAGE	TOTAL SHEETS 963	SHEET NO. 209
PLLOT SCALE # 450/41.5	CHECKED JCM	REVISED -	SCALE: SHEET NO. 93 OF 118 SHEETS			STA. 4051+00 TO STA. 4058+00	CONTRACT NO. 60131			
PLLOT DATE # 10/15/2012	DATE 10/15/2012	REVISED -	ILLINOIS FED. AID PROJECT							