

**ALIGNMENT LEGEND**

+39.5 INDICATES STATION MEASURED FROM SB BASELINE

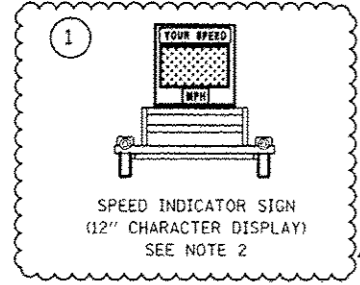
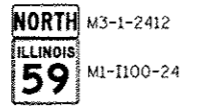
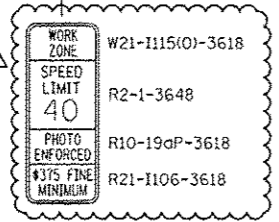
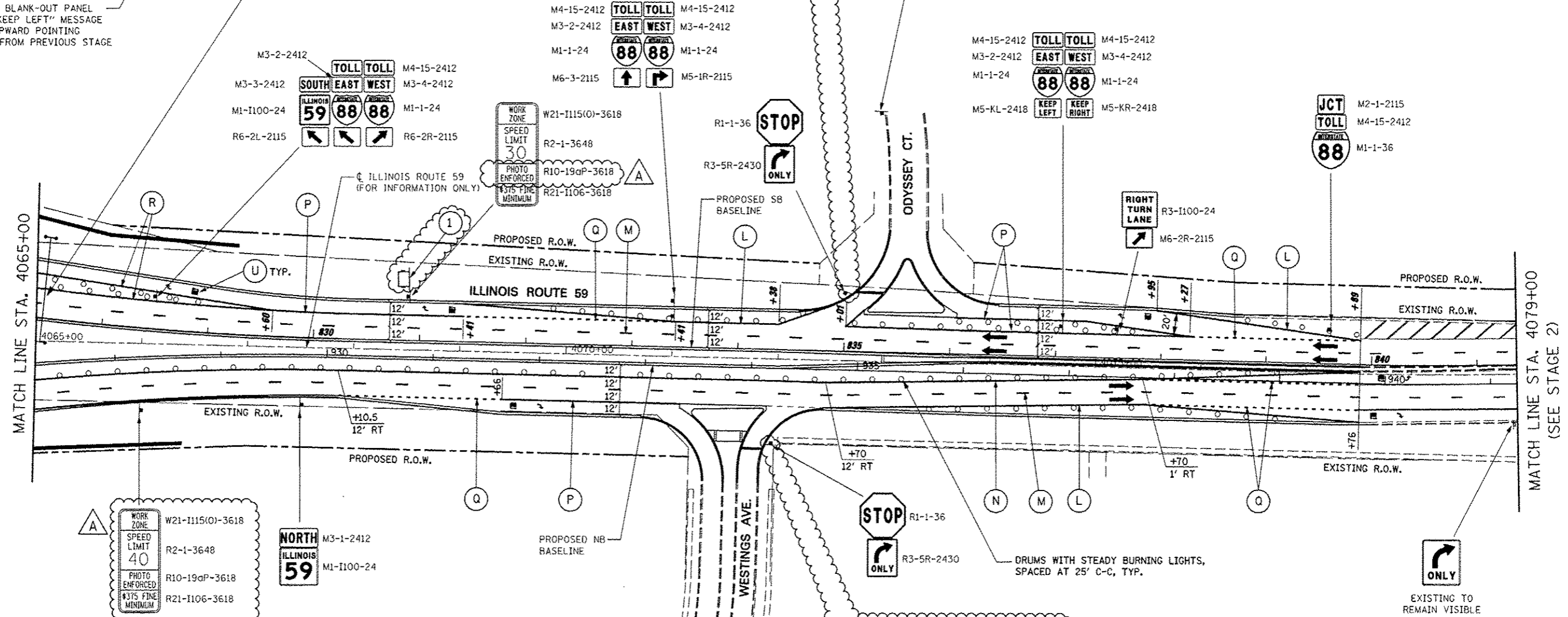
+39.5 INDICATES STATION MEASURED FROM NB BASELINE

REMOVE BLANK-OUT PANEL WITH "KEEP LEFT" MESSAGE OVER UPWARD POINTING ARROW FROM PREVIOUS STAGE

PERMANENT SIGN STRUCTURE INSTALLED IN A PREVIOUS STAGE

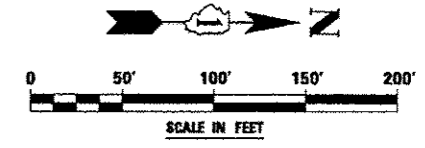
MATCH LINE STA. 4065+00

MATCH LINE STA. 4079+00 (SEE STAGE 2)



**NOTES**

- ALL BLANK OUT PANELS AND TEMPORARY SIGN PANELS MOUNTED ON OVERHEAD SIGNS SHALL HAVE AN ORANGE BACKGROUND.
- LOCATION OF TRAILER MOUNTED SPEED INDICATOR SIGN SHALL BE COORDINATED WITH THE ENGINEER AND WILL BE MEASURED AND PAID FOR SEPARATELY UNDER SPEED INDICATOR SIGN.



FILE NAME	USER NAME = #USER#	DESIGNED PJO	REVISED - ADDENDUM A 12/17/2012	<b>STATE OF ILLINOIS DEPARTMENT OF TRANSPORTATION</b>	<b>MAINTENANCE OF TRAFFIC - STAGE 4B ILLINOIS ROUTE 59</b>	F.A.P. RTE.	SECTION	COUNTY	TOTAL SHEETS	SHEET NO.	
#FILE#		DRAWN RES	REVISED -			338	(112 & 113) WRS-5	DUPAGE	963	233	
PLOT SCALE = #SCALE#		CHECKED JCM	REVISED -			CONTRACT NO. 60131					
PLOT DATE = #DATE#		DATE 10/15/2012	REVISED -			ILLINOIS FED. AID PROJECT					