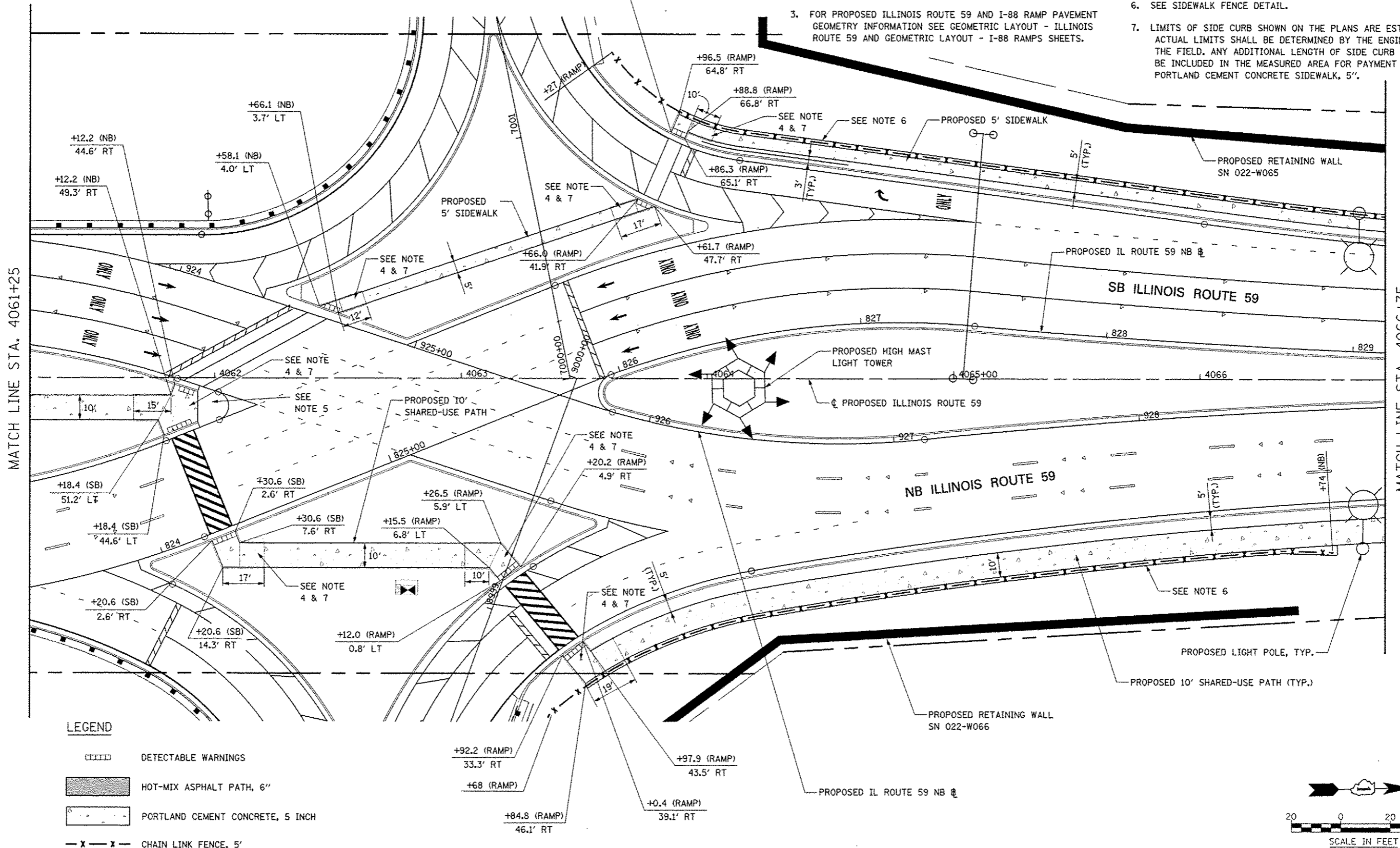


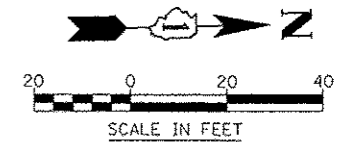
**NOTES**

1. FOR PROPOSED PAVEMENT, CURB & GUTTER, AND PROFILE INFORMATION SEE PLAN / PROFILE - ILLINOIS ROUTE 59 AND PLAN / PROFILE - I-88 RAMP SHEETS.
2. FOR PROPOSED PAVEMENT MARKING & SIGNAGE INFORMATION SEE PAVEMENT MARKING AND SIGNING - ILLINOIS ROUTE 59 AND PAVEMENT MARKING AND SIGNING - I-88 RAMP SHEETS.
3. FOR PROPOSED ILLINOIS ROUTE 59 AND I-88 RAMP PAVEMENT GEOMETRY INFORMATION SEE GEOMETRIC LAYOUT - ILLINOIS ROUTE 59 AND GEOMETRIC LAYOUT - I-88 RAMP SHEETS.
4. THE 6" SIDE CURB ADJACENT TO SIDEWALK RAMPS SHALL BE INCLUDED IN THE MEASURED AREA FOR PAYMENT FOR PORTLAND CEMENT CONCRETE SIDEWALK, 5". THE 6" SIDE CURB SHALL BE IN ACCORDANCE WITH IDOT HIGHWAY STANDARDS 424001 & 424006.
5. FOR DETAILS SEE GEOMETRIC LAYOUT - ILLINOIS ROUTE 59 MEDIAN NOSE DETAIL SHEET.
6. SEE SIDEWALK FENCE DETAIL.
7. LIMITS OF SIDE CURB SHOWN ON THE PLANS ARE ESTIMATED. ACTUAL LIMITS SHALL BE DETERMINED BY THE ENGINEER IN THE FIELD. ANY ADDITIONAL LENGTH OF SIDE CURB SHALL BE INCLUDED IN THE MEASURED AREA FOR PAYMENT FOR PORTLAND CEMENT CONCRETE SIDEWALK, 5".



**LEGEND**

- DETECTABLE WARNINGS
- HOT-MIX ASPHALT PATH, 6"
- PORTLAND CEMENT CONCRETE, 5 INCH
- CHAIN LINK FENCE, 5'



**STATE OF ILLINOIS  
DEPARTMENT OF TRANSPORTATION**

**SIDEWALK / SHARED-USE PATH / FENCE PLANS**

FILE NAME RFL014	USER NAME #USCR#	DESIGNED PJO	REVISED
		DRAWN KES	REVISED
		CHECKED JCM	REVISED
		DATE 10/15/2012	REVISED

F.A.P. RTE. 338	SECTION (112 & 113) WRS-5	COUNTY DUPAGE	TOTAL SHEETS 963	SHEET NO. 292
SCALE: AS SHOWN			CONTRACT NO. 60131	
SHEET NO. 4 OF 8 SHEETS		STA. 4061+25 TO STA. 4066+75		
ILLINOIS FED. AID PROJECT				