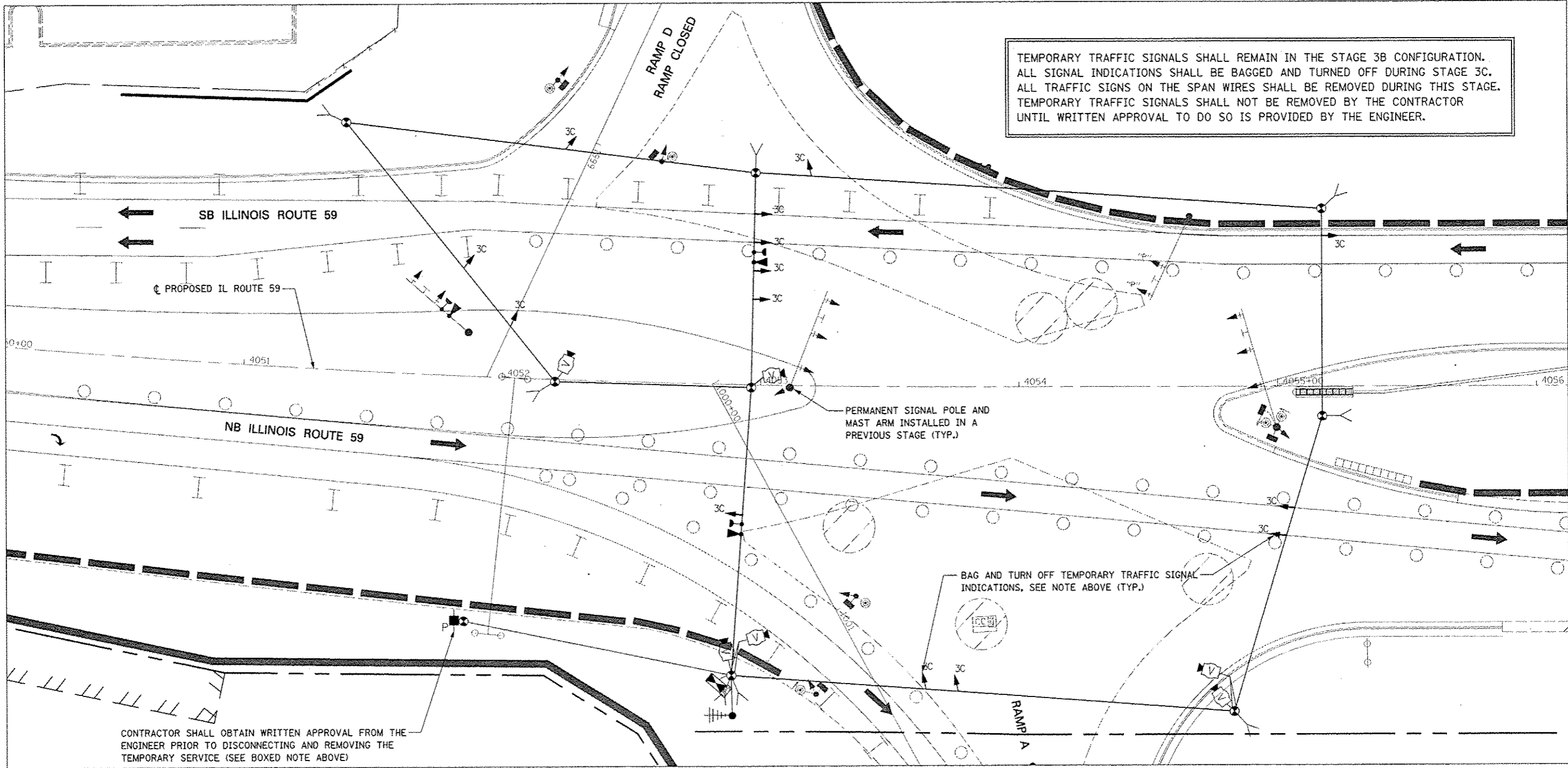


TEMPORARY TRAFFIC SIGNALS SHALL REMAIN IN THE STAGE 3B CONFIGURATION. ALL SIGNAL INDICATIONS SHALL BE BAGGED AND TURNED OFF DURING STAGE 3C. ALL TRAFFIC SIGNS ON THE SPAN WIRES SHALL BE REMOVED DURING THIS STAGE. TEMPORARY TRAFFIC SIGNALS SHALL NOT BE REMOVED BY THE CONTRACTOR UNTIL WRITTEN APPROVAL TO DO SO IS PROVIDED BY THE ENGINEER.



CONTRACTOR SHALL OBTAIN WRITTEN APPROVAL FROM THE ENGINEER PRIOR TO DISCONNECTING AND REMOVING THE TEMPORARY SERVICE (SEE BOXED NOTE ABOVE)

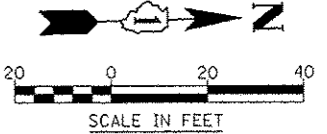
STAGE 3C TEMPORARY TRAFFIC SIGNALS

NOTE:
STAGES 4, 4A AND 4B OPERATE IN THE PROPOSED DIVERGING DIAMOND TRAFFIC PATTERN. THE INTERSECTION IS CONTROLLED BY THE PERMANENT TRAFFIC SIGNALS IN THESE STAGES. SEE PERMANENT TRAFFIC SIGNAL PLANS AND MAINTENANCE OF TRAFFIC PLANS.

RESTORATION OF WORK AREA. RESTORATION OF THE TRAFFIC SIGNAL WORK AREA SHALL BE INCIDENTAL TO THE RELATED PAY ITEM SUCH AS FOUNDATION, CONDUIT, HANDHOLE, TRENCH AND BACKFILL, ETC., AND NO EXTRA COMPENSATION SHALL BE ALLOWED. ALL ROADWAY SURFACES SUCH AS SHOULDERS, MEDIANS, SIDEWALKS, PAVEMENT, ETC. SHALL BE REPLACED IN KIND. ALL DAMAGE TO MOWED LAWNS SHALL BE REPLACED WITH AN APPROVED SOD, AND ALL DAMAGE TO UNMOWED FIELDS SHALL BE SEEDED IN ACCORDANCE WITH STANDARD SPECIFICATIONS 252 AND 250 RESPECTIVELY.

THE TRAFFIC SIGNAL CONTROLLER EQUIPMENT SHALL BE "ECONOLITE" TO MATCH THE EXISTING ADJACENT SYSTEM.

- LEGEND**
- CONSTRUCTION WORK ZONE
 - TEMPORARY PAVEMENT PLACED IN THIS STAGE
 - DIRECTION OF TRAFFIC
 - VIDEO DETECTION ZONE



FILE NAME	USER NAME	DESIGNED	REVISED	STATE OF ILLINOIS DEPARTMENT OF TRANSPORTATION	TEMPORARY TRAFFIC SIGNAL INSTALLATION MOT STAGE 3C		F.A.P. RTE.	SECTION	COUNTY	TOTAL SHEETS	SHEET NO.
	#FILES	DRAWN	REVISIONS		SCALE: AS SHOWN	SHEET NO. 29 OF 53 SHEETS	STA.	TO STA.	338	(112 & 113) WRS-5	DUPAGE
	PILOT SCALE	CHECKED	REVISIONS					TS-29		CONTRACT NO. 60131	
	PILOT DATE	DATE	REVISIONS					ILLINOIS FED. AID PROJECT			