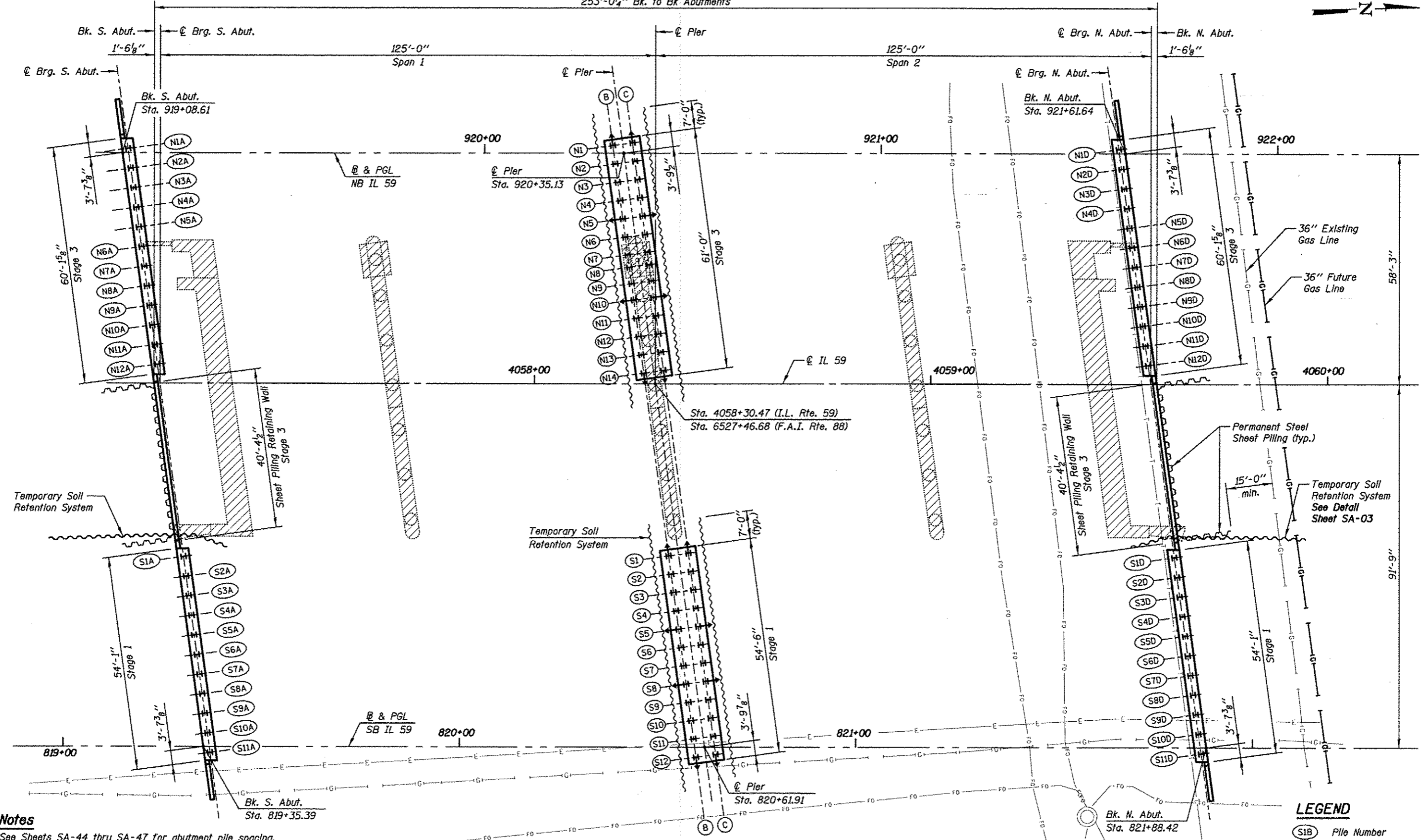
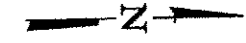


253'-0 1/4" Bk. to Bk. Abutments



Notes

- See Sheets SA-44 thru SA-47 for abutment pile spacing, dimensions and details.
- See Sheets SA-51 and SA-52 for pier pile spacing, dimensions and details.
- See Sheets SA-49 and SA-50 for permanent steel sheet piling dimensions and details.
- See Sheet SA-03 for Temporary Soil Retention System details.
- See "Status of Utilities To Be Adjusted" and "Existing Utilities" Special Provisions.

SUBSTRUCTURE LAYOUT

LEGEND

- (S1B) Pile Number
- I Vertical Pile
- ⊕ Battered Pile
- ▨ Substructure Removal

KNIGHT Engineers & Architects	DESIGNED - WPM	REVISOR -	STATE OF ILLINOIS DEPARTMENT OF TRANSPORTATION	SUBSTRUCTURE LAYOUT S.N. 022-2029 (SB) TOLLWAY B.N. 826 S.N. 022-2030 (NB) TOLLWAY B.N. 825		F.A.P. RTE.	SECTION	COUNTY	TOTAL SHEETS	SHEET NO.
	CHECKED - TB	REVISOR -		338	(112 & 113) WRS-5	DUPAGE	963	588		
SCALE - NONE	DRAWN - TB	REVISOR -	SHEET NO. SA-04 OF 63 SHEETS		CONTRACT NO. 60131		ILLINOIS FED. AID PROJECT			
DATE 10/15/2012	CHECKED - WPM	REVISOR -								