

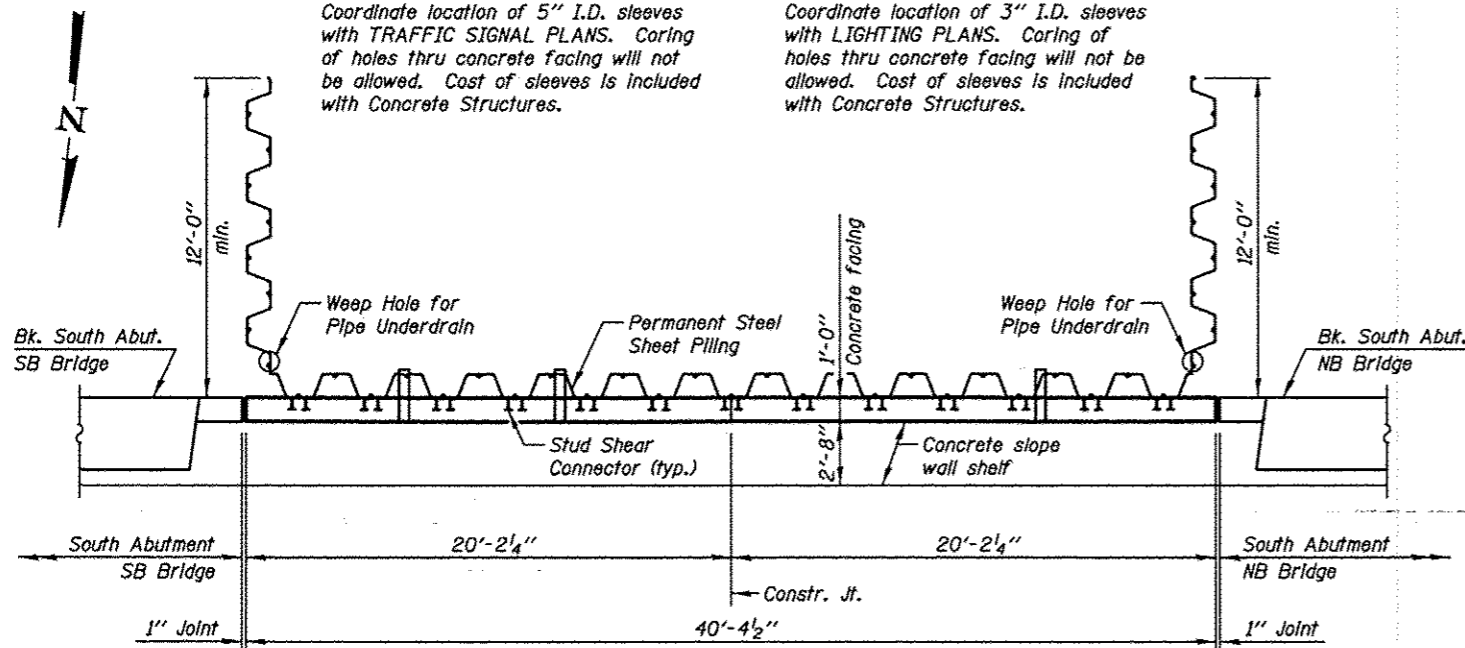
ELEVATION - NORTH FACE
(Looking South)

NOTE A

Coordinate location of 5" I.D. sleeves with TRAFFIC SIGNAL PLANS. Coring of holes thru concrete facing will not be allowed. Cost of sleeves is included with Concrete Structures.

NOTE B

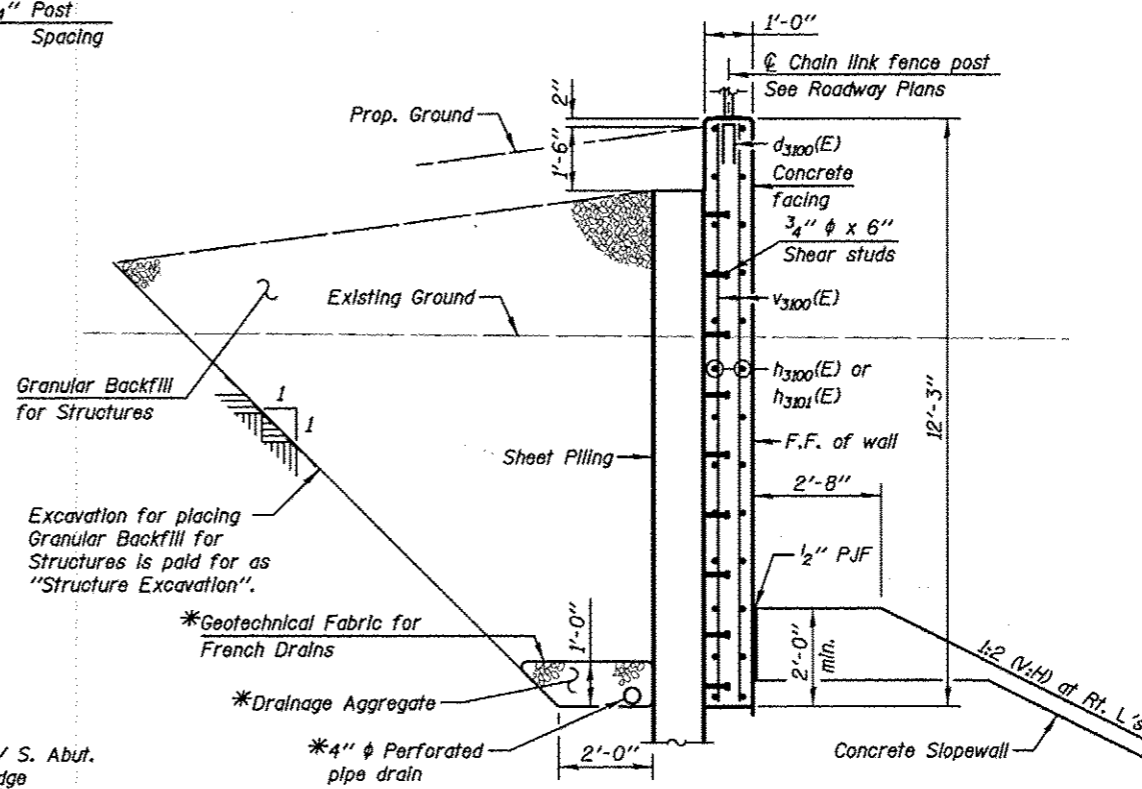
Coordinate location of 3" I.D. sleeves with LIGHTING PLANS. Coring of holes thru concrete facing will not be allowed. Cost of sleeves is included with Concrete Structures.



PLAN

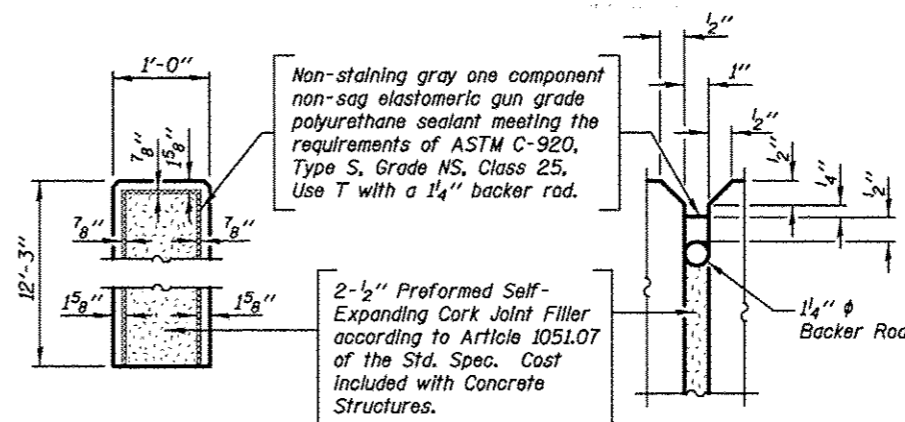
DESIGN CRITERIA

Required Section Modulus = 28.6 in³/ft
Minimum Top Elevation = 697.00

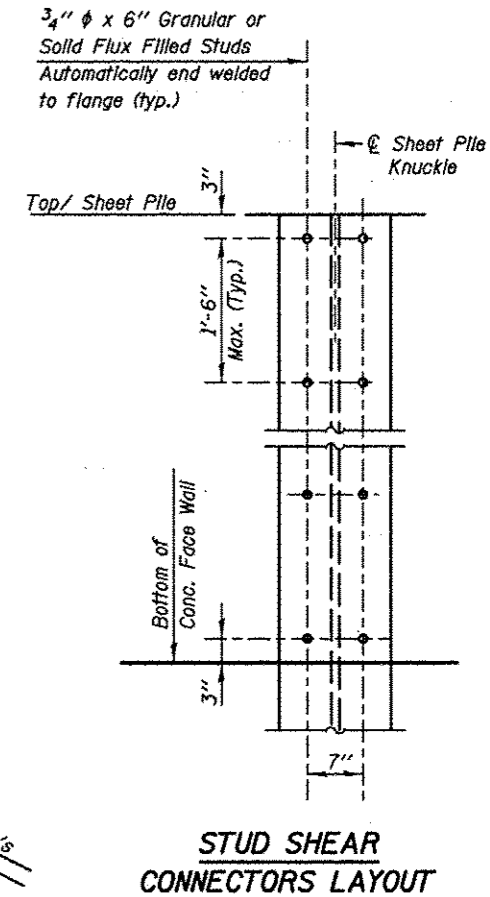
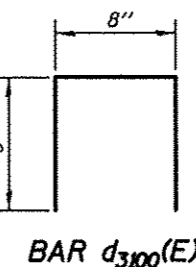
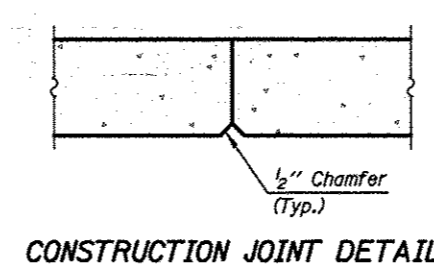


SECTION THRU SHEET PILING WALL

*Included in the cost of Pipe Underdrains for Structures.



1" JOINT DETAILS



BILL OF MATERIAL

BAR	NO.	SIZE	LENGTH	SHAPE
d ₃₁₀₀ (E)	8	#4	2'-2"	□
h ₃₁₀₀ (E)	52	#5	19'-10"	—
h ₃₁₀₁ (E)	26	#5	6'-0"	—
v ₃₁₀₀ (E)	84	#5	11'-11"	—
Structure Excavation			Cu. Yd.	97.0
Concrete Structures			Cu. Yd.	20.0
Stud Shear Connectors			Each	234
Reinforcement Bars, Epoxy Coated			Pound	2300
Permanent Steel Sheet Piling			Sq. Ft.	2171.0
Granular Backfill for Structures			Cu. Yd.	115.0
Pipe Underdrains for Structures 4"			Foot	40.0

NOTES

See Sheet SA-44, SA-46 and SA-48 for South Abutment Details.

MIN. BAR LAP
#5 - 2'-5"

TOLLWAY WALL EW123.3R,EB