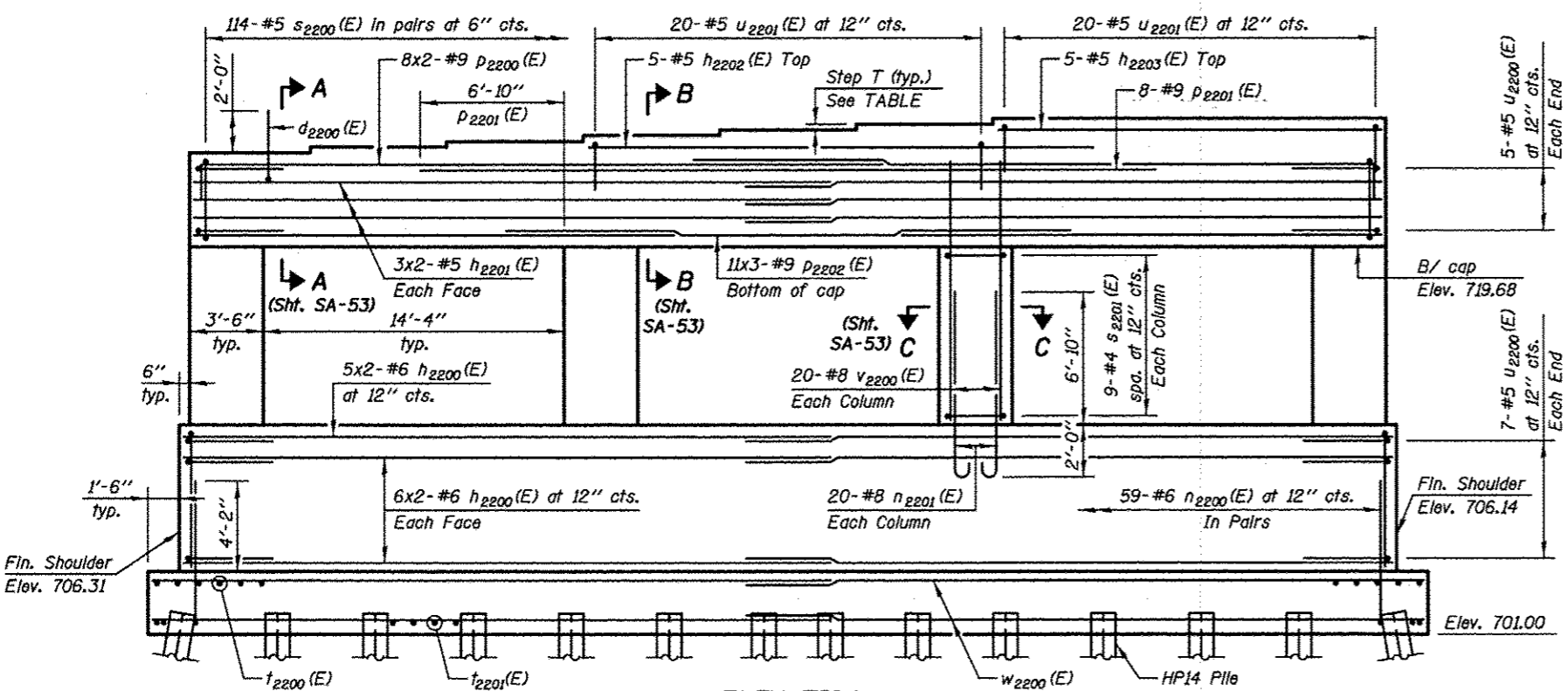


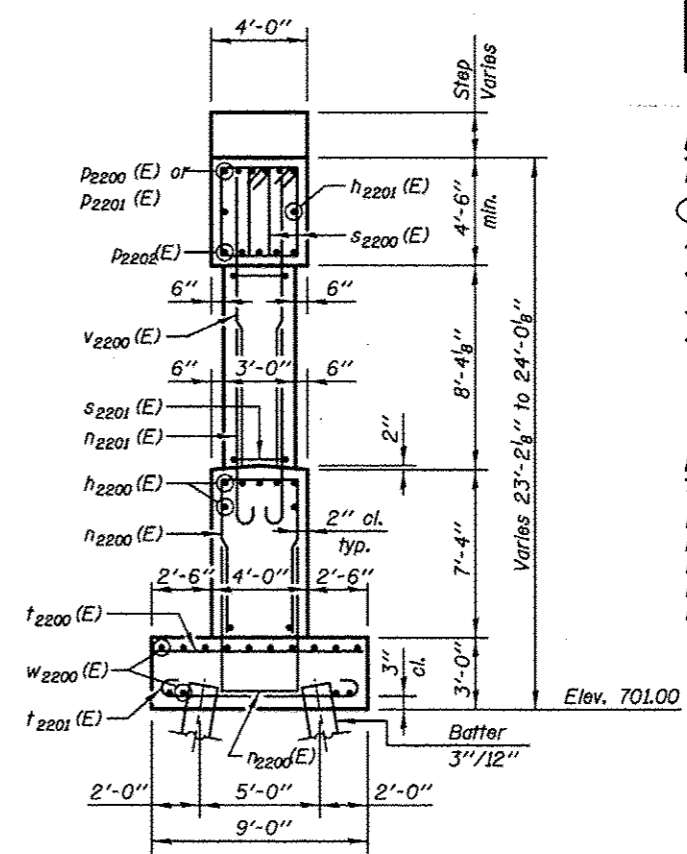
**TOP PLAN**

**BEARING SEAT ELEVATIONS**

BEAM	BRG. SEAT ELEVATION	STEP T- Inch
1	724.18	
2	724.32	1 5/8"
3	724.45	1 5/8"
4	724.59	1 5/8"
5	724.73	1 3/4"
6	724.87	1 5/8"
7	725.01	1 3/4"
8	725.01	
9	725.01	



**ELEVATION (Looking North)**



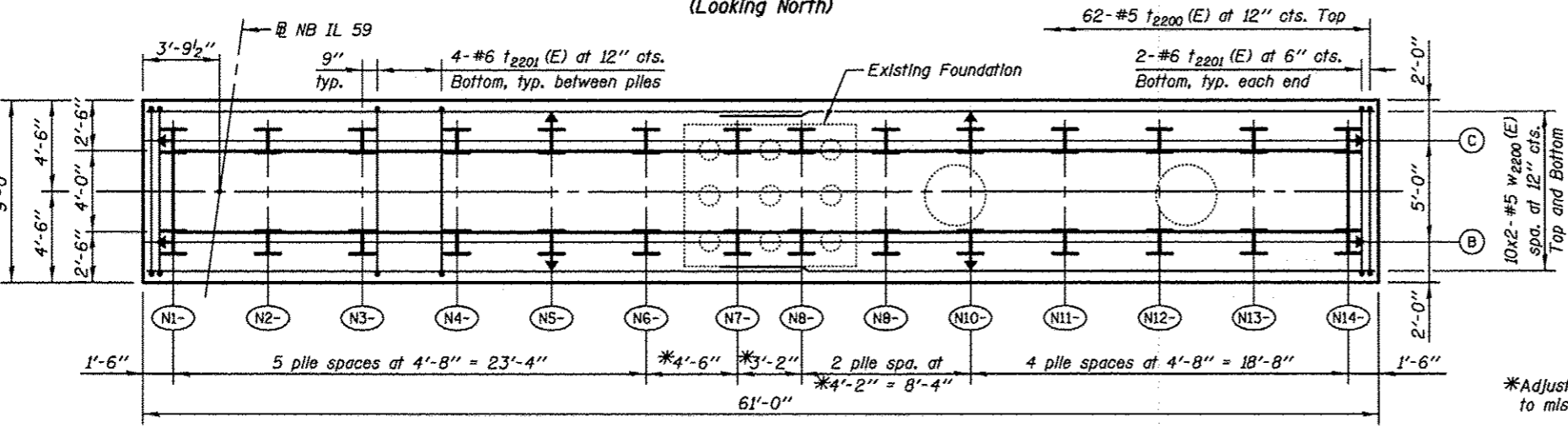
**END VIEW**

**LEGEND**

- E.F. Each Face
- (NIB) Pile Number
- I Vertical Pile
- I Battered Pile

**PILE DATA**

Type & Size: Steel HP 14x73  
 Nominal Required Bearing: 504 Kips  
 Factored Resistance Available: 277 Kips  
 Est. Length: 58 ft  
 No. Production Piles: 27  
 No. Test Piles: 1



**FOOTING PLAN**

**NOTES**

- Pour steps monolithically with cap.
- Bars Indicated thus 20x3-#15 Indicates 20 lines of bars with 3 lengths per line.
- See Sheet SA-04 for additional Pile Layout details.
- See Sheet SA-53 for Section A-A, B-B & C-C, details and Bill of Material.

**MIN. BAR LAP**

- Vertical Bars #5 - 2'-7"
- Horizontal Bars #5 - 2'-11"
- #7 - 4'-8"

\*Adjust pile spacing, as required, to miss existing piles.