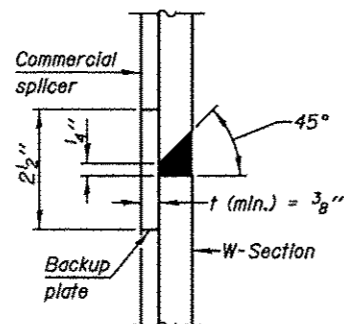
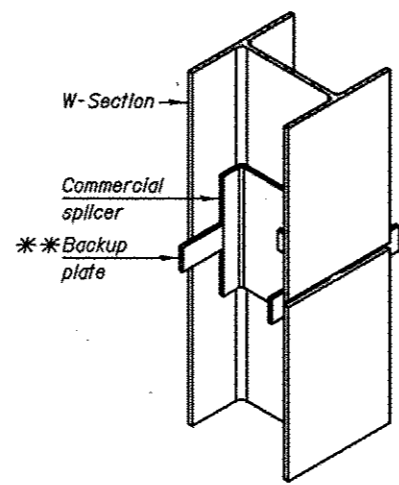


ELEVATION

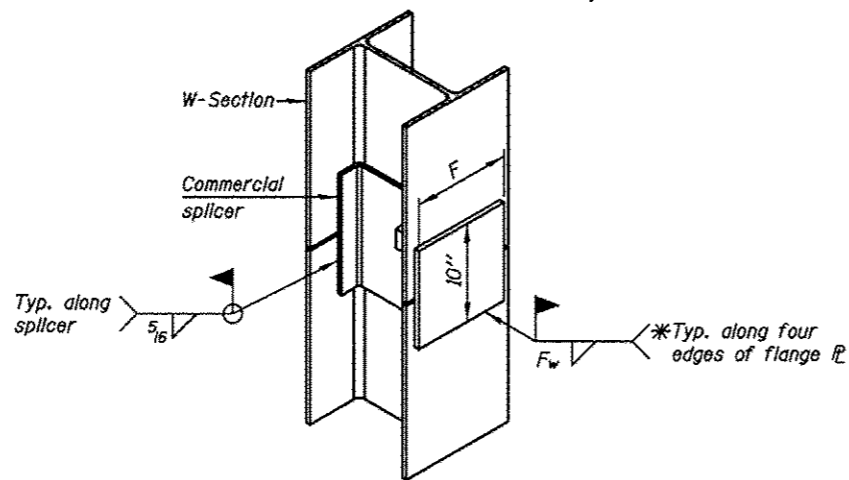


DETAIL B



ISOMETRIC VIEW

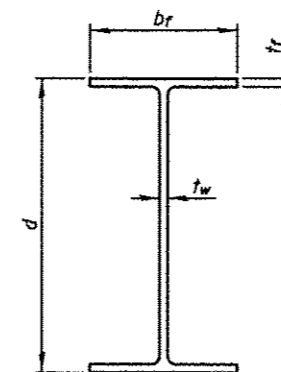
WELDED COMMERCIAL SPLICE



ISOMETRIC VIEW

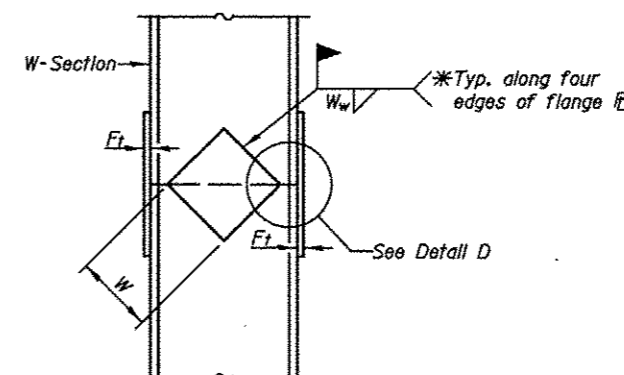
WELDED COMMERCIAL SPLICE ALTERNATE

- * Interrupt welds 1/4" from end of web and/or each flange.
- ** Remove portions of backup plates that extend outside the flanges.
- *** Weld size per pile shoe manufacturer (5/16" min.).

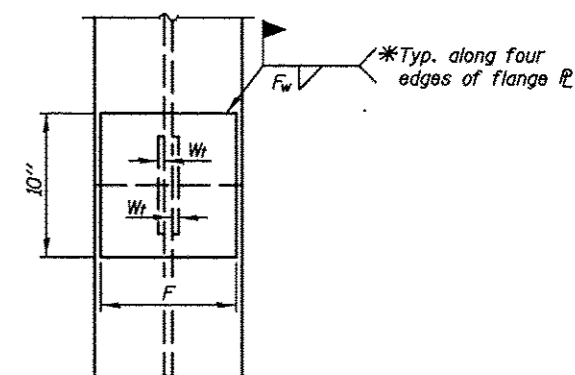


STEEL PILE

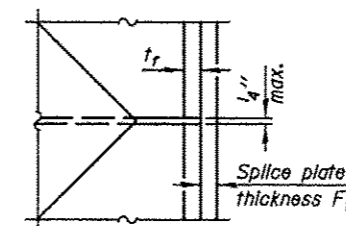
Designation	Depth d	Flange width b _f	Flange thickness t _f	Web thickness t _w	Encasement diameter A
HP 14x73	13 ⁵ / ₈ "	14 ⁵ / ₈ "	1/2"	1/2"	30"
W24x68	23 ³ / ₄ "	9"	9/16"	7/16"	36"
x117	24 ¹ / ₄ "	12 ³ / ₄ "	7/8"	9/16"	36"



ELEVATION



END VIEW



DETAIL D

Designation	F	F _f	F _w	W	W _f	W _w
HP 14x73	12 ¹ / ₂ "	5 ⁵ / ₈ "	9/16"	7 ³ / ₄ "	5 ⁵ / ₈ "	1/2"
W24x68	8"	3 ¹ / ₄ "	9/16"	15"	1/2"	3/8"
x117	10"	1 ¹ / ₈ "	5/16"	15"	1/2"	3/8"

WELDED PLATE FIELD SPLICE

Notes:
The steel W-Section shall be according to AASHTO M270 Grade 50.