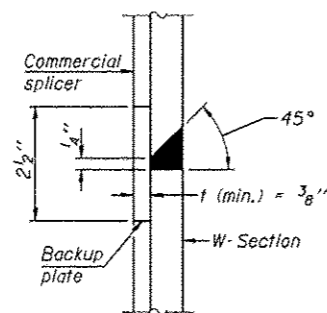
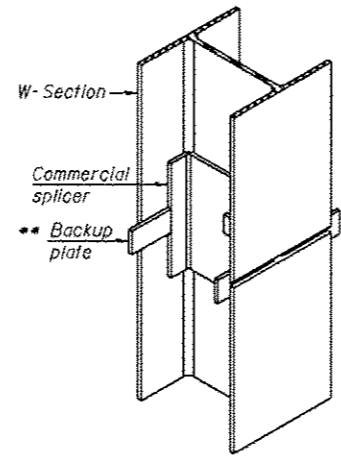


ELEVATION

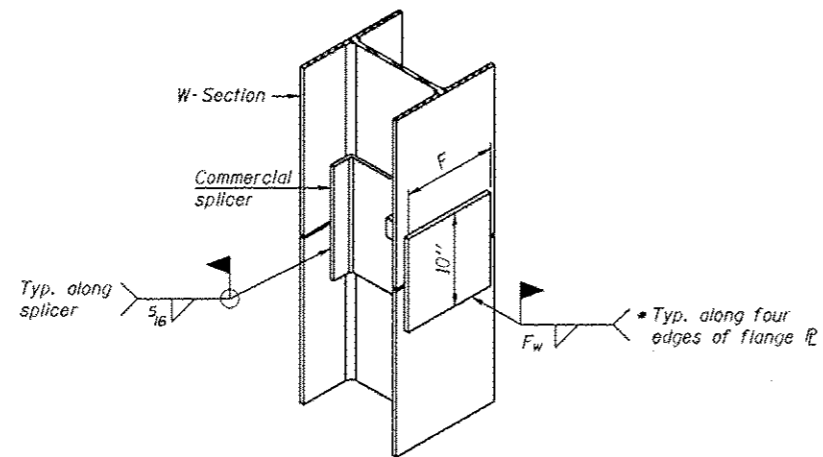


DETAIL "B"



ISOMETRIC VIEW

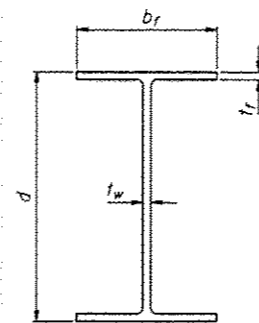
WELDED COMMERCIAL SPLICE



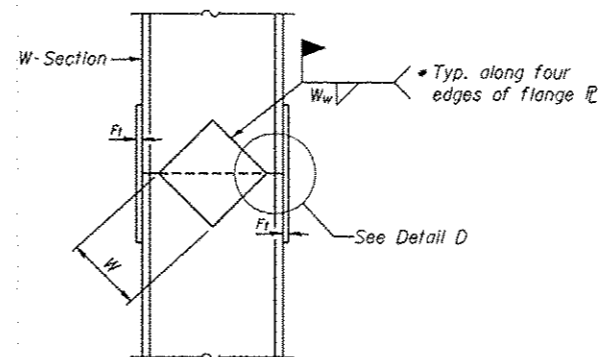
ISOMETRIC VIEW

WELDED COMMERCIAL SPLICE ALTERNATE

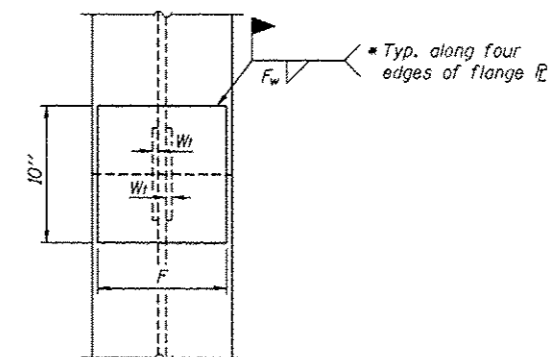
- * Interrupt welds 1/4" from end of web and/or each flange.
- ** Remove portions of backup plates that extend outside the flanges.



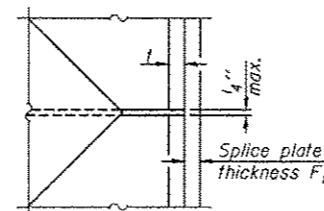
Designation	Depth d	Flange width br	Flange thickness tf	Web thickness tw	Encasement diameter A
W27x146	27 3/8"	14"	1"	5/8"	36"



ELEVATION



END VIEW

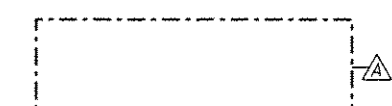


DETAIL D

Designation	F	F1	Fw	W	W1	Ww
W27x146	12"	1 1/4"	3/4"	16 3/4"	5/8"	3/8"

WELDED PLATE FIELD SPLICE

Note:
The steel W-Sections shall be according to AASHTO M270 Grade 36.



FILE NAME = ...\88131-0025-005-PileSpliceDetail.dgn

USER NAME = SAW	DESIGNED - LAS	REVISED 12/17/2012 L.A.S.
	CHECKED - DAZ	REVISED
PLOT SCALE = 0.1567" / 1"	DRAWN - SAW	REVISED
PLOT DATE = 12/12/2012	CHECKED - JLA	REVISED

F.A.P. RTE.	SECTION	COUNTY	TOTAL SHEETS	SHEET NO.
338/JL 59	(112 & 113) WRS-5	DUPAGE	963	670
			CONTRACT NO. 60131	