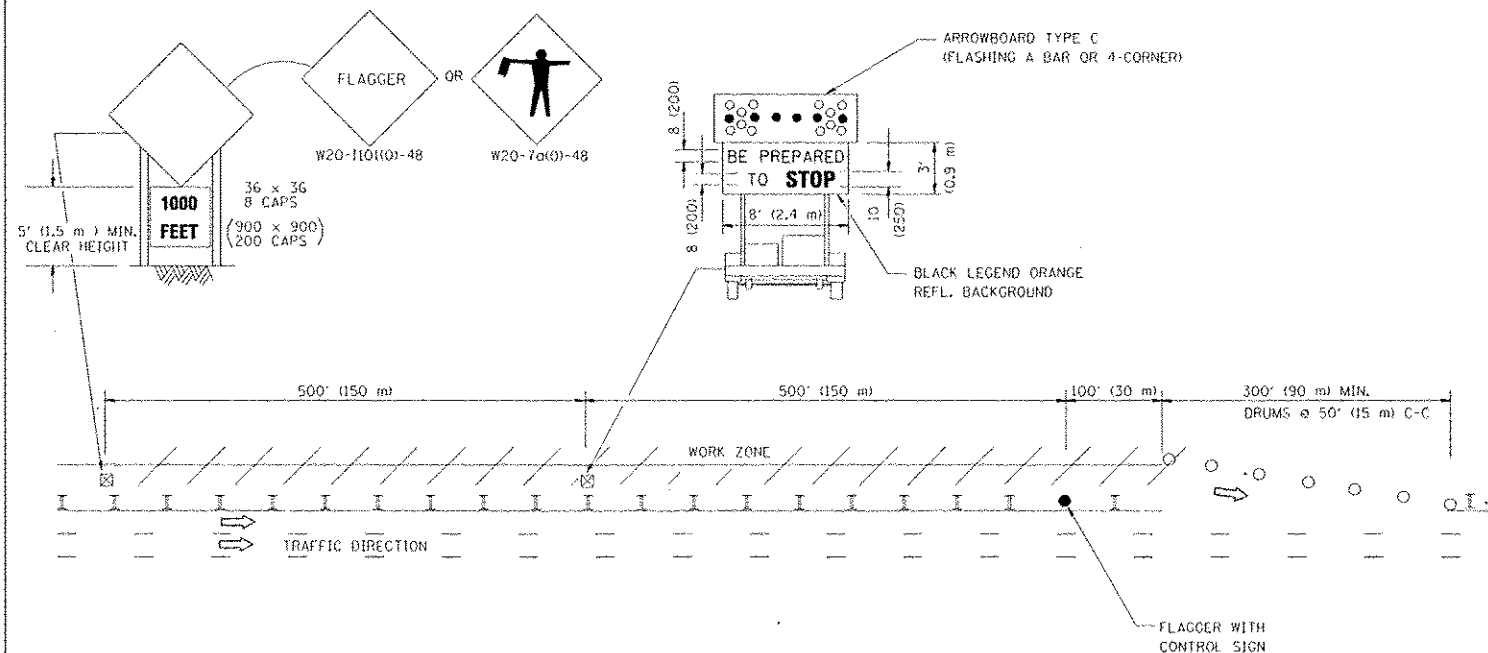
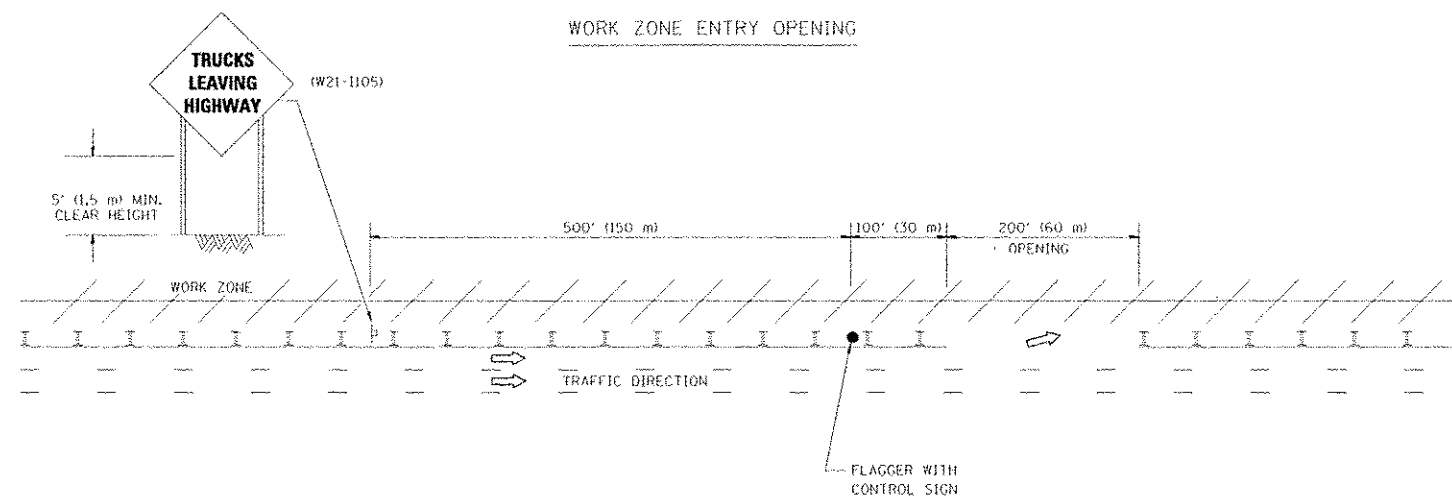


SIGNING FOR FLAGGING OPERATIONS AT WORK ZONE OPENINGS

WORK ZONE EXIT OPENING



WORK ZONE ENTRY OPENING



NOTES:

1. THE ARROWBOARD, THE FLAGGER AHEAD SIGN AND THE TRUCKS LEAVING HIGHWAY SIGN SHALL BE REMOVED OR TURNED AWAY FROM TRAFFIC AND THE EXIT AND ENTRY OPENINGS SHALL BE CLOSED WHEN THE FLAGGING OPERATION CEASES. NON OPERATING EQUIPMENT SHALL COMPLY WITH ARTICLE 701.11
2. WORK ZONE EXIT OPENINGS SHOULD BE A MINIMUM OF ONE HALF MILE APART.
3. EXITING THE WORK ZONE AT ANY PLACE OTHER THAN AT A WORK ZONE EXIT OPENING WILL BE PROHIBITED.
4. ALL VEHICLES SHALL ENTER THE WORK ZONE AT ENTRY OPENINGS, USING THEIR TURN SIGNALS TO WARN MOTORISTS

ALL DIMENSIONS ARE IN INCHES (MILLIMETERS) UNLESS OTHERWISE SHOWN

FILE NAME W:\disty\10522\34\1010.dwg	USER NAME 1010
PLOT SCALE 1/8" = 1'-0"	PLOT DATE 12/26/2008

DESIGNED	REVISOR
DRAWN	REVISOR
CHECKED	REVISOR
DATE	REVISOR

DESIGNED	REVISOR
DRAWN	REVISOR
CHECKED	REVISOR
DATE	REVISOR

REVISOR	DATE
J.A.F. 04-03	
J.A.F. 02-06	
S.P.B. 01-07	
S.P.B. 12-09	

STATE OF ILLINOIS
DEPARTMENT OF TRANSPORTATION

SIGNING FOR FLAGGING OPERATIONS
AT WORK ZONE OPENINGS

SCALE: NONE SHEET NO. 1 OF 1 SHEETS STA. TO STA.

F.A. RTE.	SECTION	COUNTY	TOTAL SHEETS	SHEET NO.
338	(112 & 113) WRS-5	DUPAGE	963	726
TC-18		CONTRACT NO. 60131		
FED. ROAD DIST. NO. 1 ILLINOIS FED. AID PROJECT				