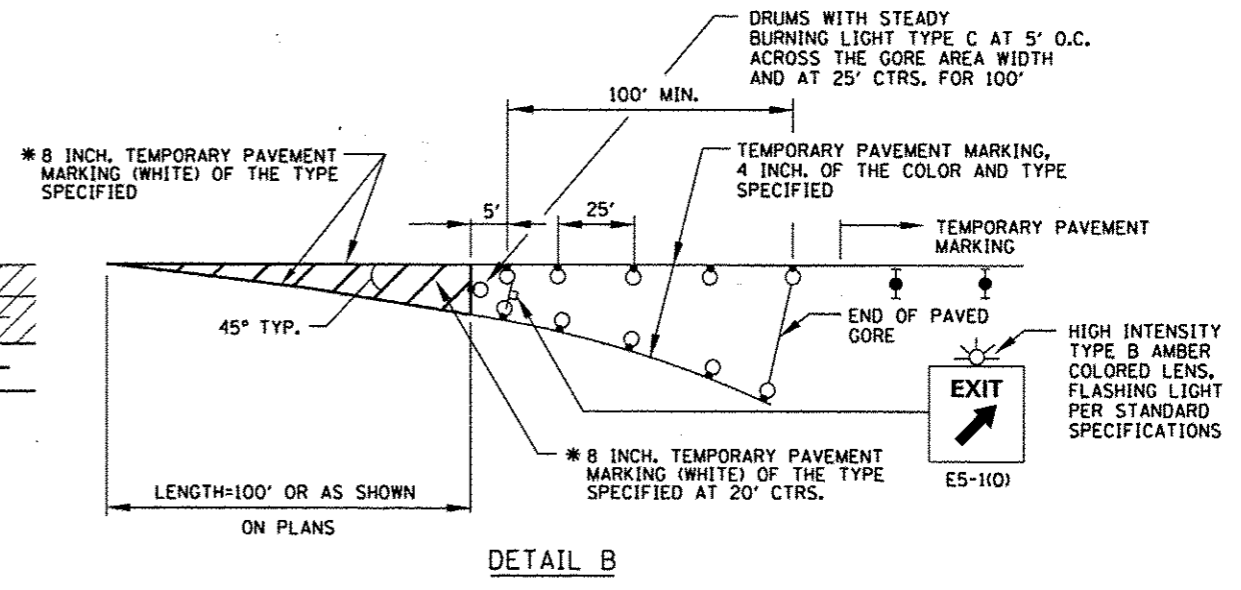
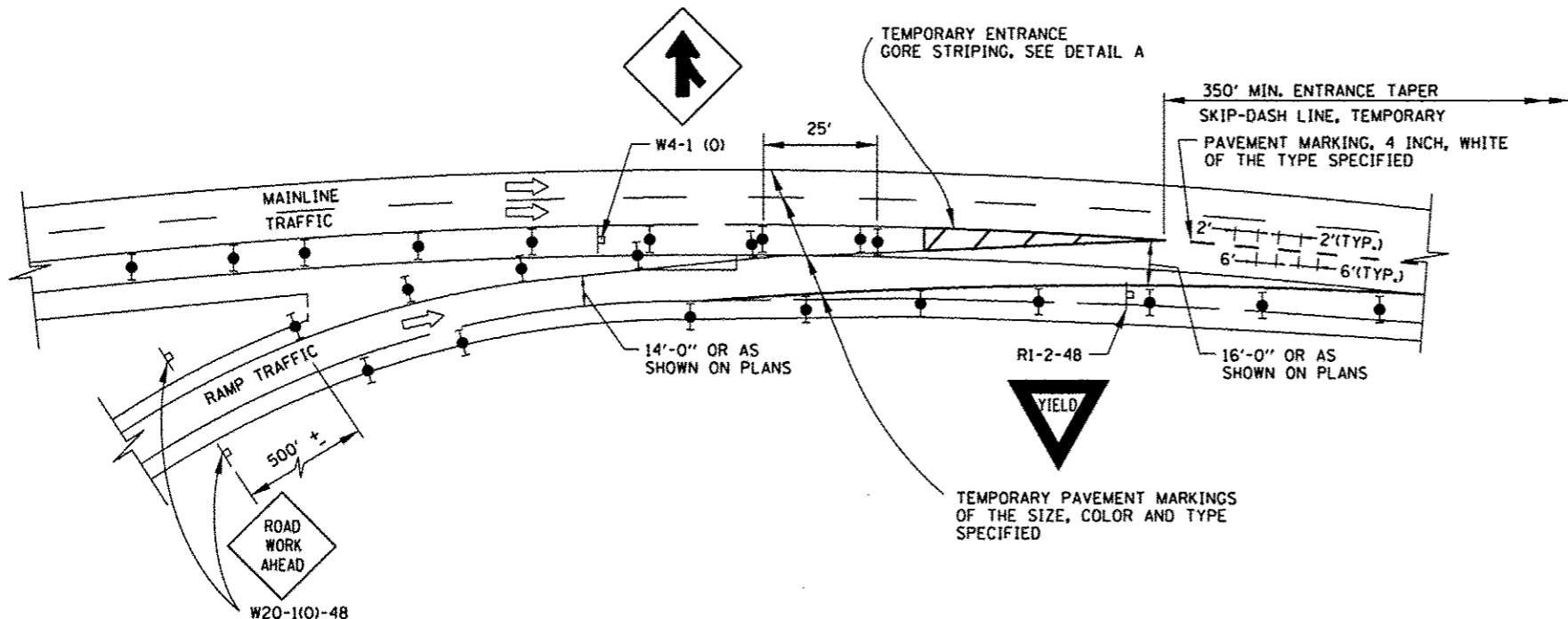


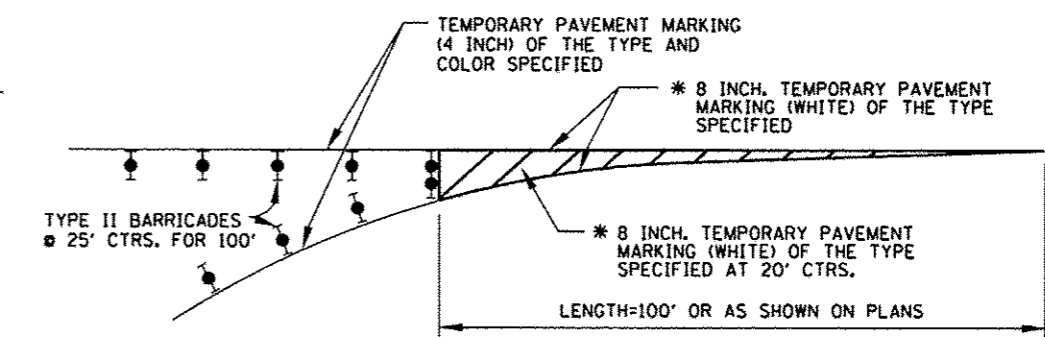
TYPICAL APPLICATION OF TEMPORARY EXIT GORE DELINEATION AND SIGNING



TEMPORARY EXIT GORE DELINEATION AND SIGNING



TYPICAL APPLICATION OF TEMPORARY ENTRANCE GORE DELINEATION AND SIGNING



TEMPORARY ENTRANCE GORE STRIPING

SYMBOLS

- WORK AREA
- SIGN
- TYPE II BARRICADE, DRUM, OR VERTICAL BARRICADE WITH STEADY BURN MONODIRECTIONAL LIGHT
- DRUM WITH STEADY BURNING LIGHT

* 8 INCH TEMPORARY PAVEMENT MARKING IS TO BE MADE OF 2-TEMPORARY PAVEMENT MARKING 4 INCH, WHITE OF THE TYPE SPECIFIED.

CONTRACT 60I31 SHEET 939 OF 963

DATE	REVISIONS
1-1-2011	CHANGED SYMBOL DESIGNATION
2-7-2012	REVISED MERGE SIGN



TEMPORARY GORE DETAILS

STANDARD E5-02

APPROVED *Paul Kovacs* CHIEF ENGINEER DATE 5-1-2009