

- LEGEND**
- ① STABILIZED SUBBASE-HOT-MIX ASPHALT, 4 1/2"
  - ② AGGREGATE SUBGRADE IMPROVEMENT 12"
  - ③ TRAFFIC BARRIER TERMINAL, TY. 1 (SPECIAL) TANGENT
  - ④ POLYMERIZED LEVELING BINDER (MACHINE METHOD), IL-4.75, N50, 3/4" - 1"
  - ⑤ POLYMERIZED HOT-MIX ASPHALT SURFACE COURSE, MIX 'F', N90, 1 3/4"
  - ⑥ PCC PAVEMENT 10 1/2" (JOINTED)
  - ⑦ AGGREGATE SHOULDERS, TY. B, 6"
  - ⑧ HOT - MIX ASPHALT SHOULDERS, 10"  
- POLYMERIZED HOT - MIX ASPHALT SURFACE COURSE, MIX 'F', N90, 1 3/4"  
- HOT - MIX ASPHALT BINDER COURSE, IL-19.0, N70, 8 1/4"
  - ⑨ TRAFFIC BARRIER TERMINAL, TY. 6
  - ⑩ TRAFFIC BARRIER TERMINAL, TY. 5
  - ⑪ CLASS SI CONCRETE (OUTLET)
  - ⑫ CONCRETE BARRIER, DOUBLE FACE, 42 INCH HEIGHT
  - ⑬ COMBINATION CONCRETE CURB & GUTTER, TY. B-6.18
  - ⑭ PCC SHOULDERS 10 1/2"
  - ⑮ TRAFFIC BARRIER TERMINAL, TY. 2
  - ⑯ STEEL PLATE BEAM GUARDRAIL, TY. A, 6 FT. POSTS
  - ⑰ PCC PAVEMENT 9" (JOINTED)
  - ⑱ PCC SHOULDERS 9"
  - ⑲ CHAIN LINK FENCE, 4'
  - ⑳ COMBINATION CONCRETE CURB AND GUTTER, B-6.24
  - ㉑ LEVELING BINDER (MACHINE METHOD), N70
  - ㉒ CONCRETE CURB, TYPE B
  - ㉓ CONCRETE BARRIER, SINGLE FACE, 32 INCH HEIGHT  
MATCH EXISTING BARRIER WALL DIMENSIONS
  - ㉔ BRIDGE APPROACH PAVEMENT CONNECTOR (PCC)

**GENERAL PLAN NOTES**

THE GENERAL CONTRACTOR IS REQUIRED TO HIRE AN ENVIRONMENTAL FIRM WITH AT LEAST FIVE (5) DOCUMENTED LEAKING UNDERGROUND STORAGE TANK CLEANUPS OR THAT IS PRE-QUALIFIED IN HAZARDOUS WASTE BY THE DEPARTMENT TO REMEDIATE THE SOIL CONTAMINATION AND MONITOR FOR WORKER PROTECTION. SEE SPECIAL PROVISIONS FOR ADDITIONAL INFORMATION.

BOWMAN, BARRETT & ASSOCIATES INC.  
CONSULTING ENGINEERS  
Chicago, Illinois  
312.228.0100  
www.bbandainc.com



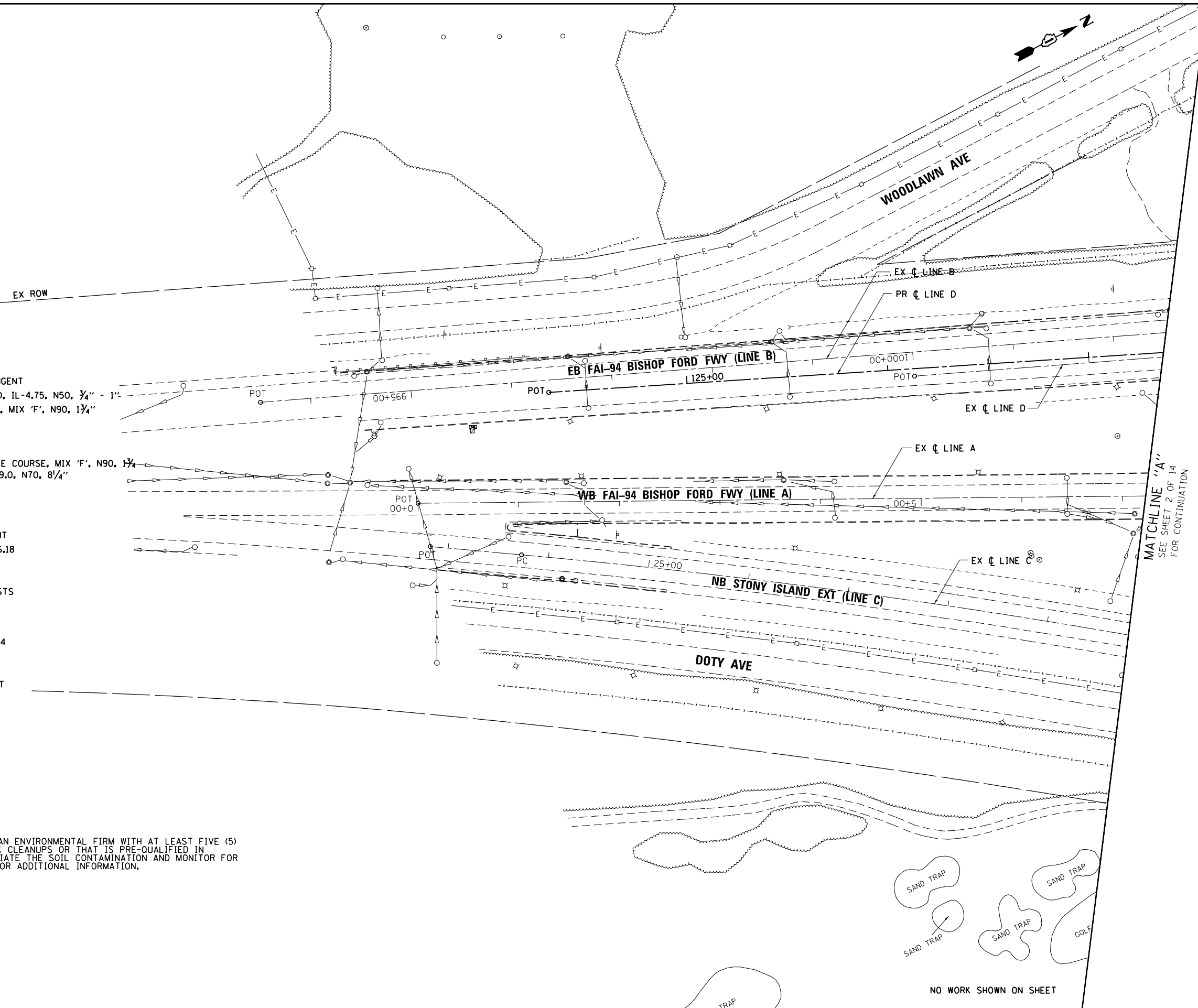
FILE NAME =	USER NAME = default	DESIGNED - RTF	REVISED -
#FILE#		DRAWN - RTF	REVISED -
	PLOT SCALE = #SCALE#	CHECKED - RR	REVISED -
	PLOT DATE = 4/10/2013	DATE - 03/29/2013	REVISED -

**STATE OF ILLINOIS  
DEPARTMENT OF TRANSPORTATION**

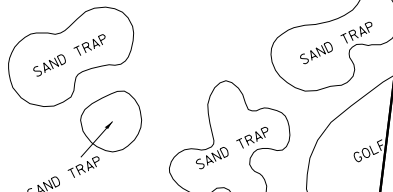
**PROPOSED PLAN  
STONY ISLAND EXTENSION**

SCALE: 1"=50' SHEET NO. 1 OF 14 SHEETS STA. TO STA.

F.A.I. RTE.	SECTION	COUNTY	TOTAL SHEETS	SHEET NO.
94	2012-059-BR	COOK	631	58
CONTRACT NO. 60J12			ILLINOIS FED. AID PROJECT	



MATCHLINE "A"  
SEE SHEET 2 OF 14  
FOR CONTINUATION



NO WORK SHOWN ON SHEET

S:\1072\05\_CADD\01680112\_Sheets\01680112\_sht1.dwg