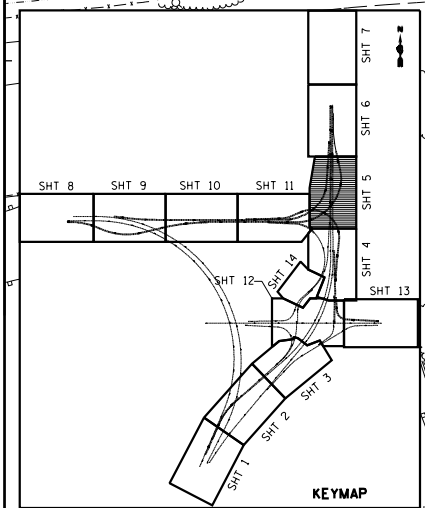
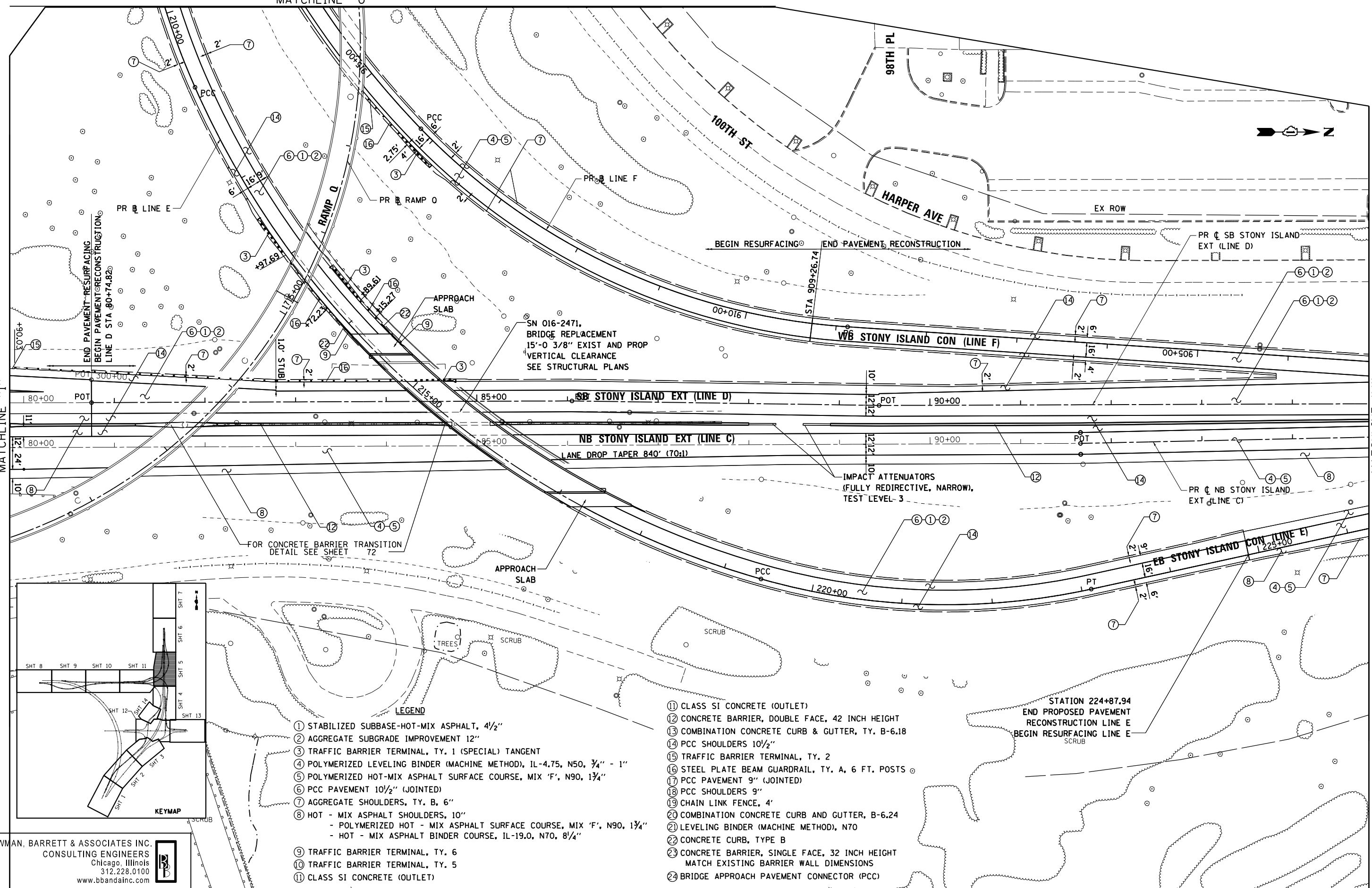


SEE SHEET 4 OF 14 FOR CONTINUATION  
MATCHLINE "I"

SEE SHEET 6 OF 14 FOR CONTINUATION  
MATCHLINE "J"



- LEGEND**
- ① STABILIZED SUBBASE-HOT-MIX ASPHALT, 4 1/2"
  - ② AGGREGATE SUBGRADE IMPROVEMENT 12"
  - ③ TRAFFIC BARRIER TERMINAL, TY. 1 (SPECIAL) TANGENT
  - ④ POLYMERIZED LEVELING BINDER (MACHINE METHOD), IL-4.75, N50, 3/4" - 1"
  - ⑤ POLYMERIZED HOT-MIX ASPHALT SURFACE COURSE, MIX 'F', N90, 1 3/4"
  - ⑥ PCC PAVEMENT 10 1/2" (JOINTED)
  - ⑦ AGGREGATE SHOULDERS, TY. B, 6"
  - ⑧ HOT - MIX ASPHALT SHOULDERS, 10"  
- POLYMERIZED HOT - MIX ASPHALT SURFACE COURSE, MIX 'F', N90, 1 3/4"  
- HOT - MIX ASPHALT BINDER COURSE, IL-19.0, N70, 8/4"
  - ⑨ TRAFFIC BARRIER TERMINAL, TY. 6
  - ⑩ TRAFFIC BARRIER TERMINAL, TY. 5
  - ⑪ CLASS SI CONCRETE (OUTLET)

- ⑫ CLASS SI CONCRETE (OUTLET)
- ⑬ CONCRETE BARRIER, DOUBLE FACE, 42 INCH HEIGHT
- ⑭ COMBINATION CONCRETE CURB & GUTTER, TY. B-6.18
- ⑮ PCC SHOULDERS 10 1/2"
- ⑯ TRAFFIC BARRIER TERMINAL, TY. 2
- ⑰ STEEL PLATE BEAM GUARDRAIL, TY. A, 6 FT. POSTS
- ⑱ PCC PAVEMENT 9" (JOINTED)
- ⑲ PCC SHOULDERS 9"
- ⑳ CHAIN LINK FENCE, 4'
- ㉑ COMBINATION CONCRETE CURB AND GUTTER, B-6.24
- ㉒ LEVELING BINDER (MACHINE METHOD), N70
- ㉓ CONCRETE CURB, TYPE B
- ㉔ CONCRETE BARRIER, SINGLE FACE, 32 INCH HEIGHT  
MATCH EXISTING BARRIER WALL DIMENSIONS
- ㉕ BRIDGE APPROACH PAVEMENT CONNECTOR (PCC)

BOWMAN, BARRETT & ASSOCIATES INC.  
CONSULTING ENGINEERS  
Chicago, Illinois  
312.228.0100  
www.bbandainc.com



**STATE OF ILLINOIS  
DEPARTMENT OF TRANSPORTATION**

**PROPOSED PLAN  
STONY ISLAND EXTENSION**

SCALE: 1"=50' SHEET NO. 5 OF 14 SHEETS STA. TO STA.

F.A.I. RTE.	SECTION	COUNTY	TOTAL SHEETS	SHEET NO.
94	2012-059-BR	COOK	631	62
CONTRACT NO. 60J12				
ILLINOIS FED. AID PROJECT				

FILE NAME	USER NAME	DESIGNED	REVISIONS
*FILEL\$	default	- RTF	-
		DRAWN - RTF	REVISIONS -
		CHECKED - RR	REVISIONS -
		DATE - 03/29/2013	REVISIONS -

S:\1072\05\_CADD\10680112\_sht-rp.dwg 05/05/13