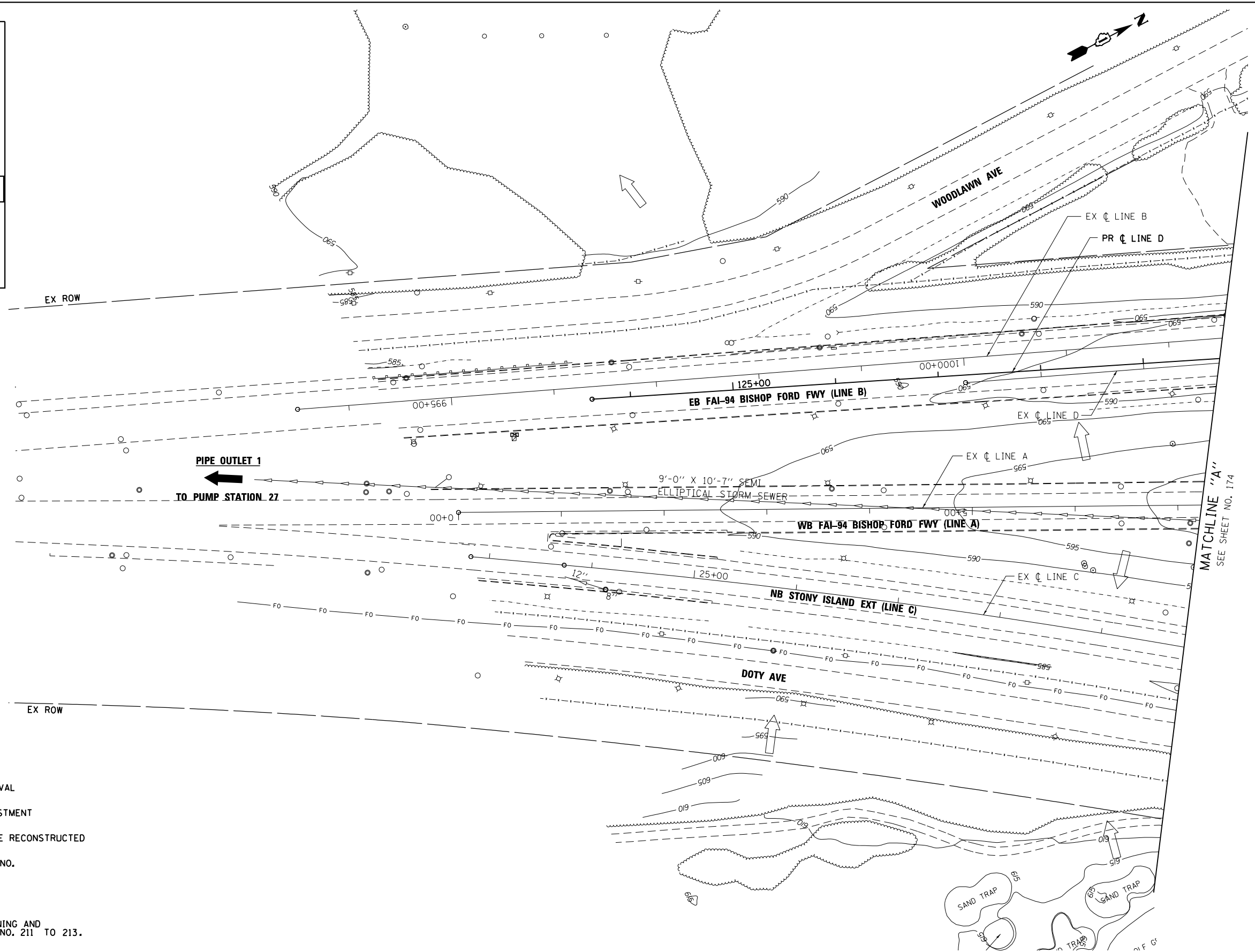


EXISTING LEGEND:

- INLET
- CATCH BASIN
- MANHOLE
- END SECTION
- DITCH FLOW
- SWALE
- HEADWALL
- SHEET FLOW
- OVERFLOW
- OUTLET
- STORM SEWER
- SANITARY SEWER
- COMBINED SEWER
- STORM SEWER REMOVAL
- SUMMIT
- SAG
- DRAINAGE STRUCTURE REMOVAL
- DRAINAGE STRUCTURE ADJUSTMENT
- DRAINAGE STRUCTURE TO BE RECONSTRUCTED
- CLEAN AND TELEVISING PIPE NO.

NOTE:

1. FOR ADJUSTMENTS, REMOVALS, CLEANING AND TELEVISION SCHEDULES SEE SHEETS NO. 211 TO 213.



BOWMAN, BARRETT & ASSOCIATES INC.
 CONSULTING ENGINEERS
 Chicago, Illinois
 312.228.0100
 www.bbandainc.com



FILE NAME =	USER NAME = default	DESIGNED - JAM	REVISED -
#FILE#		DRAWN - JAM	REVISED -
	PLOT SCALE = #SCALE#	CHECKED - RGR	REVISED -
	PLOT DATE = 4/2/2013	DATE - 03/29/2013	REVISED -

STATE OF ILLINOIS
 DEPARTMENT OF TRANSPORTATION

EXISTING DRAINAGE PLAN
 STONY ISLAND EXTENSION

SCALE: 1"=50' SHEET NO. 1 OF 14 SHEETS STA. TO STA.

F.A.I. RTE.	SECTION	COUNTY	TOTAL SHEETS	SHEET NO.
94	2012-059-BR	COOK	631	173
				CONTRACT NO. 60J12
ILLINOIS FED. AID PROJECT				

S:\1072-05-CADD\01680112-Sheets\01680112-shr-wrkt-drawn-01.dgn