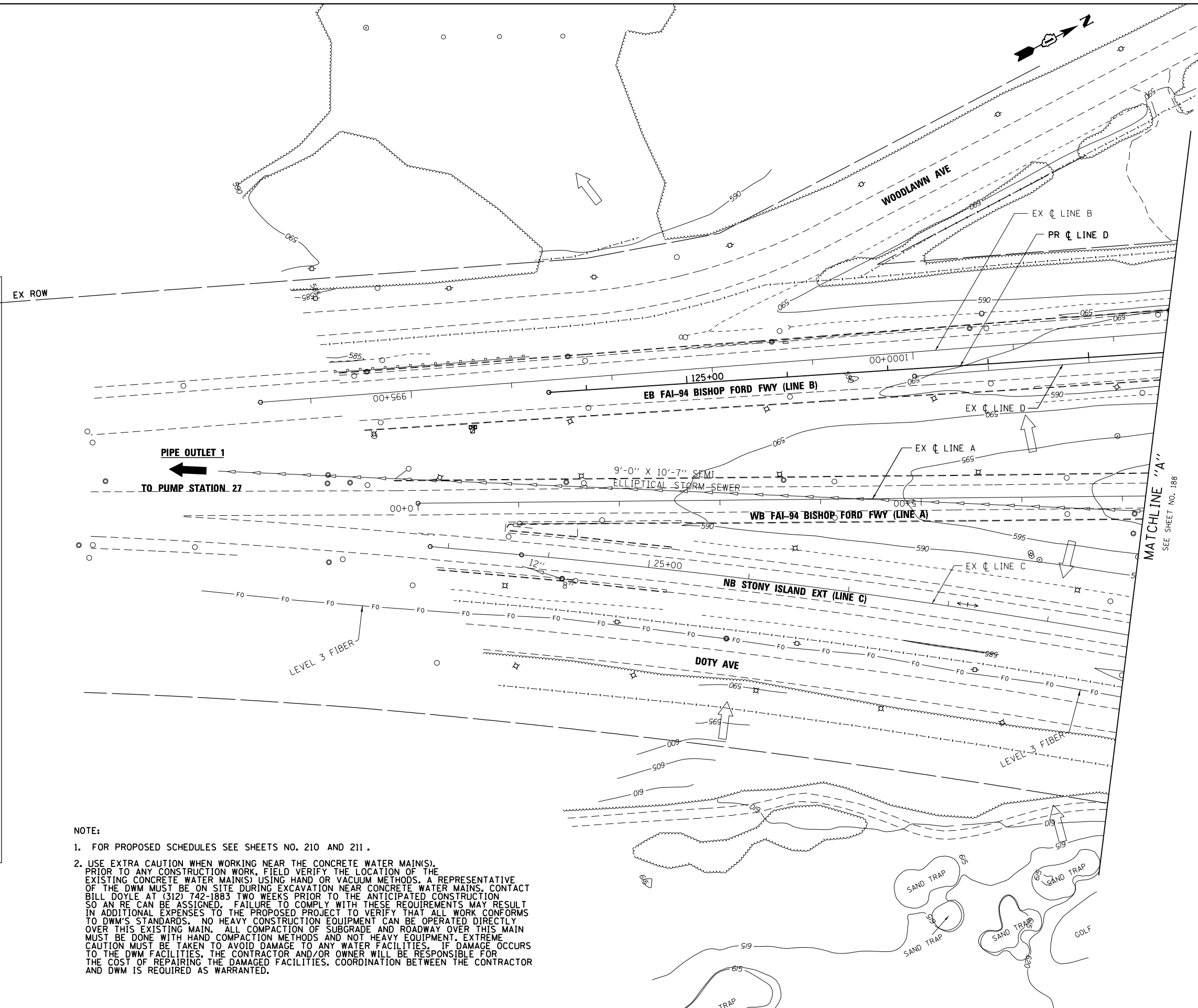


LEGEND

EXISTING		PROPOSED
□	INLET	□
○	CATCH BASIN	●
○	MANHOLE	○
▤	DRAINAGE STR TYPE 4	▤
▥	DRAINAGE STR TYPE 5	▥
◁	END SECTION	◁
~>	DITCH FLOW	~>
+	SWALE	+
→	SHEET FLOW	→
↪	OVERFLOW	↪
→	OUTLET	→
→	STORM SEWER	→
→	SANITARY SEWER	→
→	COMBINED SEWER	→
→	PIPE UNDERDRAIN	→
↔	SUMMIT	↔
✱	SAG	✱
	RIPRAP	▨
	TURF REINFORCEMENT MAT	▧
	PROPOSED STRUCTURE NO.	△
	PROPOSED STORM SEWER NO.	⊙



MATCHLINE "A"
SEE SHEET NO. 188

NOTE:

- FOR PROPOSED SCHEDULES SEE SHEETS NO. 210 AND 211.
- USE EXTRA CAUTION WHEN WORKING NEAR THE CONCRETE WATER MAIN(S). PRIOR TO ANY CONSTRUCTION WORK, FIELD VERIFY THE LOCATION OF THE EXISTING CONCRETE WATER MAIN(S) USING HAND OR VACUUM METHODS. A REPRESENTATIVE OF THE DWM MUST BE ON SITE DURING EXCAVATION NEAR CONCRETE WATER MAINS. CONTACT BILL DOYLE AT (312) 742-1883 TWO WEEKS PRIOR TO THE ANTICIPATED CONSTRUCTION SO AN RE CAN BE ASSIGNED. FAILURE TO COMPLY WITH THESE REQUIREMENTS MAY RESULT IN ADDITIONAL EXPENSES TO THE PROPOSED PROJECT TO VERIFY THAT ALL WORK CONFORMS TO DWM'S STANDARDS. NO HEAVY CONSTRUCTION EQUIPMENT CAN BE OPERATED DIRECTLY OVER THIS EXISTING MAIN. ALL COMPACTION OF SUBGRADE AND ROADWAY OVER THIS MAIN MUST BE DONE WITH HAND COMPACTION METHODS AND NOT HEAVY EQUIPMENT. EXTREME CAUTION MUST BE TAKEN TO AVOID DAMAGE TO ANY WATER FACILITIES. IF DAMAGE OCCURS TO THE DWM FACILITIES, THE CONTRACTOR AND/OR OWNER WILL BE RESPONSIBLE FOR THE COST OF REPAIRING THE DAMAGED FACILITIES. COORDINATION BETWEEN THE CONTRACTOR AND DWM IS REQUIRED AS WARRANTED.

BOWMAN, BARRETT & ASSOCIATES INC.
CONSULTING ENGINEERS
Chicago, Illinois
312.228.0100
www.bbandainc.com



FILE NAME =	USER NAME = default	DESIGNED - JAM	REVISED -
#FILE#		DRAWN - JAM	REVISED -
	PLOT SCALE = #SCALE#	CHECKED - RGR	REVISED -
	PLOT DATE = 4/3/2013	DATE - 03/29/2013	REVISED -

STATE OF ILLINOIS
DEPARTMENT OF TRANSPORTATION

PROPOSED DRAINAGE PLAN
STONY ISLAND EXTENSION

SCALE: 1"=50' SHEET NO. 1 OF 14 SHEETS STA. TO STA.

F.A.I. RTE.	SECTION	COUNTY	TOTAL SHEETS	SHEET NO.
94	2012-059-BR	COOK	631	187
CONTRACT NO. 60J12			ILLINOIS FED. AID PROJECT	

S:\1072-05-CADD\01680112-sh1-tr-op-dr-am-01.dgn