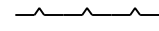
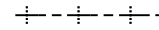
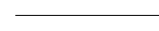


LEGEND:

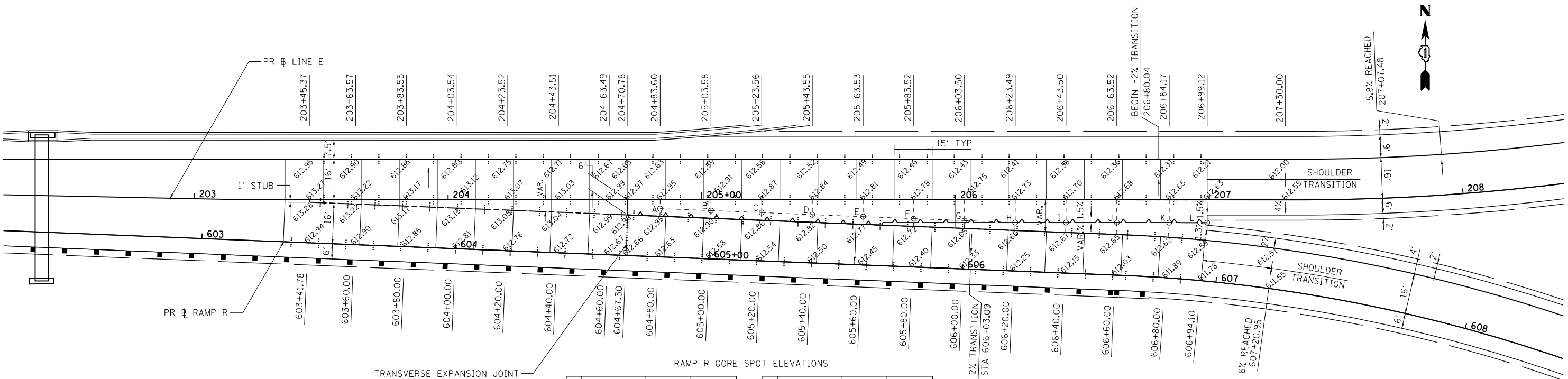
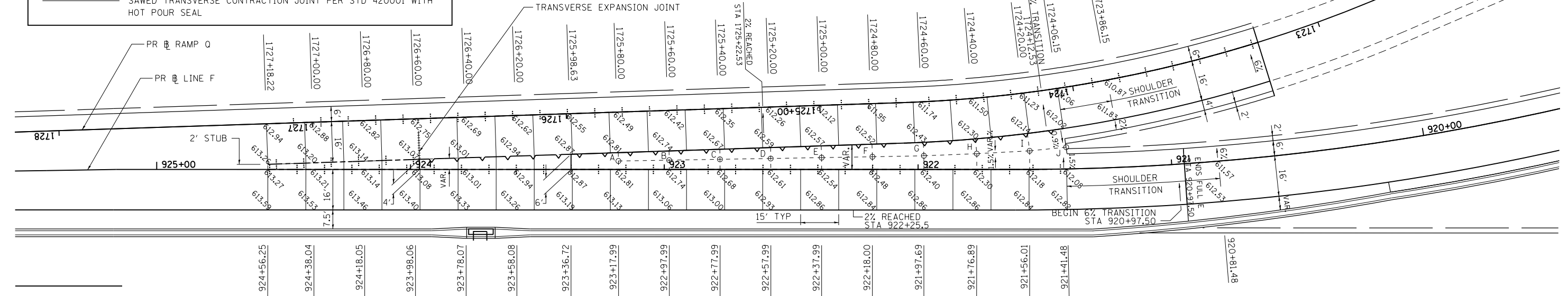
-  LONGITUDINAL KEYED CONSTRUCTION JOINT PER STD 420001 (SHALL BE INCLUDED IN THE COST OF THE PAY ITEM PORTLAND CEMENT CONCRETE PAVEMENT, (JOINTED) OF THE SPECIFIED THICKNESS)
-  LONGITUDINAL SAWED OR CONSTRUCTION JOINT PER STD 420001 (SHALL BE INCLUDED IN THE COST OF THE PAY ITEM PORTLAND CEMENT CONCRETE PAVEMENT, (JOINTED) OF THE SPECIFIED THICKNESS)
-  SAWED TRANSVERSE CONTRACTION JOINT PER STD 420001 WITH HOT POUR SEAL

NOTES:

1. ELEVATIONS ARE GIVEN EVERY 20' ON EVEN STATIONS UNLESS OTHERWISE NOTED.
2. SEE IDOT STD 420001, 420201 AND 420301 FOR ADDITIONAL INFORMATION ON RAMP AND PAVEMENT JOINTING.

RAMP Q GORE SPOT ELEVATIONS

PT	STATION	OFFSET	ELEV.	PT	STATION	OFFSET	ELEV.
A	1725+80.06	19.3' LT	612.76	F	1724+80.00	21.0' LT	612.41
B	1725+60.06	19.6' LT	612.69	G	1724+60.00	21.3' LT	612.32
C	1725+40.07	20.0' LT	612.62	H	1724+40.00	21.9' LT	612.21
D	1725+20.07	20.3' LT	612.55	I	1724+20.00	22.9' LT	612.07
E	1725+00.00	20.6' LT	612.47	J	1724+06.15	23.4' LT	611.95



RAMP R GORE SPOT ELEVATIONS

PT	STATION	OFFSET	ELEV.	PT	STATION	OFFSET	ELEV.
A	604+80.00	19.0' LT	612.90	G	606+00.00	19.1' LT	612.63
B	605+00.00	19.0' LT	612.85	H	606+20.00	19.1' LT	612.60
C	605+20.00	19.0' LT	612.79	I	606+40.00	19.9' LT	612.57
D	605+40.00	19.0' LT	612.75	J	606+60.00	20.7' LT	612.55
E	605+60.00	19.1' LT	612.71	K	606+80.00	21.8' LT	612.52
F	605+80.00	19.1' LT	612.67	L	606+94.10	22.9' LT	612.50

BOWMAN, BARRETT & ASSOCIATES INC.
CONSULTING ENGINEERS
Chicago, Illinois
312.228.0100
www.bbandainc.com



FILE NAME =	USER NAME = default	DESIGNED -	REVISED -	STATE OF ILLINOIS DEPARTMENT OF TRANSPORTATION	GORE DETAILS			F.A.I. R.T.E. = 94	SECTION = 2012-059-BR	COUNTY = COOK	TOTAL SHEETS = 631	SHEET NO. = 214
FILEL		DRAWN - JAM	REVISED -		SCALE: 1"=20'	SHEET NO. OF SHEETS	STA. TO STA.	CONTRACT NO. 60J12				
		CHECKED - RGR	REVISED -					ILLINOIS FED. AID PROJECT				
		DATE - 03/29/2013	REVISED -									

S:\1072-05-CADD\0168J12 Sheets\0168J12-shr-gore details.dwg