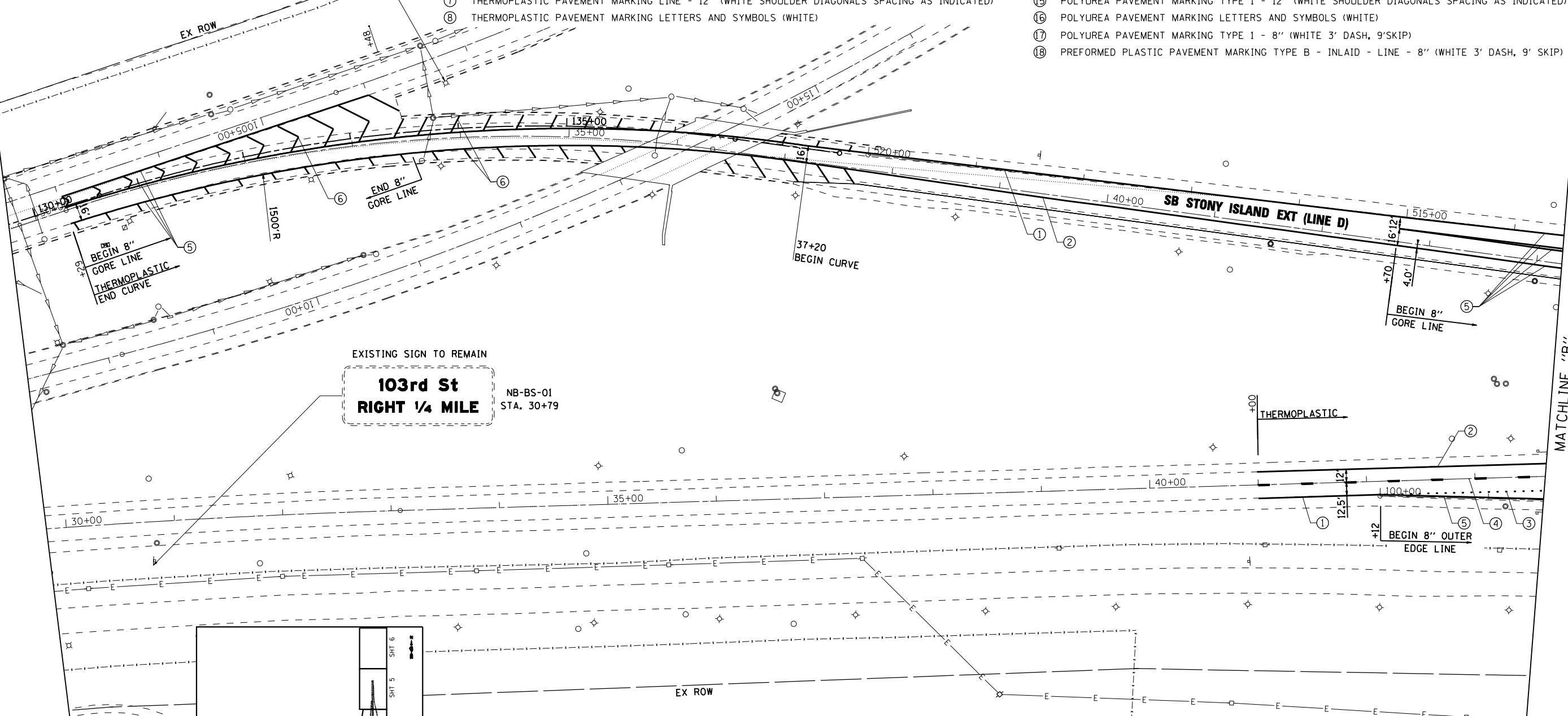
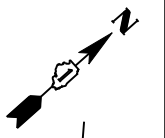


EXISTING SIGN TO REMAIN
 SB-LP-02
 STA. 1006+72
 STA. 133+93
 MUTCD W4-3
 48" X 48"

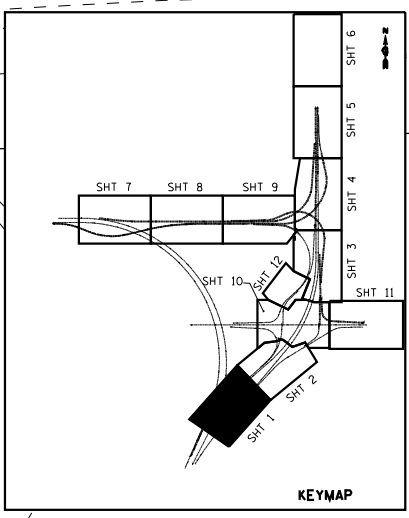
- LEGEND:
- ① THERMOPLASTIC PAVEMENT MARKING LINE - 4" (WHITE EDGE LINE)
 - ② THERMOPLASTIC PAVEMENT MARKING LINE - 4" (YELLOW EDGE LINE)
 - ③ PREFORMED PLASTIC PAVEMENT MARKING TYPE B- INLAID-LINE 4" (WHITE 2' DASH, 6' SKIP)
 - ④ PREFORMED PLASTIC PAVEMENT MARKING TYPE B- INLAID-LINE 5" (WHITE 10' DASH, 30' SKIP)
 - ⑤ THERMOPLASTIC PAVEMENT MARKING LINE - 8" (WHITE EDGE LINE)
 - ⑥ THERMOPLASTIC PAVEMENT MARKING LINE - 12" (WHITE GORE CHEVRONS SPACED @ 30' CENTERS)
 - ⑦ THERMOPLASTIC PAVEMENT MARKING LINE - 12" (WHITE SHOULDER DIAGONALS SPACING AS INDICATED)
 - ⑧ THERMOPLASTIC PAVEMENT MARKING LETTERS AND SYMBOLS (WHITE)

- ⑨ POLYUREA PAVEMENT MARKING TYPE 1 - 4" (WHITE EDGE LINE)
- ⑩ POLYUREA PAVEMENT MARKING TYPE 1 - 4" (YELLOW EDGE LINE)
- ⑪ POLYUREA PAVEMENT MARKING TYPE 1 - 4" (WHITE 2' DASH, 6' SKIP) LINE - 8" (WHITE 2' DASH, 6' SKIP)
- ⑫ POLYUREA PAVEMENT MARKING TYPE 1 - 5" (WHITE 10' DASH, 30' SKIP)
- ⑬ POLYUREA PAVEMENT MARKING TYPE 1 - 8" (WHITE EDGE LINE)
- ⑭ POLYUREA PAVEMENT MARKING TYPE 1 - 12" (WHITE GORE CHEVRONS SPACED @ 30' CENTERS)
- ⑮ POLYUREA PAVEMENT MARKING TYPE 1 - 12" (WHITE SHOULDER DIAGONALS SPACING AS INDICATED)
- ⑯ POLYUREA PAVEMENT MARKING LETTERS AND SYMBOLS (WHITE)
- ⑰ POLYUREA PAVEMENT MARKING TYPE 1 - 8" (WHITE 3' DASH, 9' SKIP)
- ⑱ PREFORMED PLASTIC PAVEMENT MARKING TYPE B - INLAID - LINE - 8" (WHITE 3' DASH, 9' SKIP)



EXISTING SIGN TO REMAIN
**103rd St
 RIGHT 1/4 MILE**
 NB-BS-01
 STA. 30+79

MATCHLINE "B"
 SEE SHEET 2 OF 12
 FOR CONTINUATION



**GUIDE SIGN SEQUENCE
 NUMBERING CODE**

DIRECTION OF TRAFFIC	SIGN PANEL NUMBER	MOUNTING TYPE
EB - EASTBOUND STONY ISLAND	EB - TR - 03	WP - WOOD POST
WB - WESTBOUND STONY ISLAND		BS - BREAKAWAY STEEL
NB - NORTHBOUND STONY ISLAND		LP - LIGHTPOLE
SB - SOUTHBOUND STONY ISLAND		MP - METAL POST
		TR - TRUSS
		CL - CANTILEVER
		BM - BRIDGE MOUNTED

NOTE:
 1. POLYUREA PAVEMENT MARKING SHALL BE USED FOR ALL MARKINGS ON PCC.
 2. RAISED REFLECTIVE PAVEMENT MARKERS SHALL BE INSTALLED PER IDOT DISTRICT 1 STANDARD TC-12.



EJM ENGINEERING, INC.
 411 South Wells Street Suite 800
 Chicago, Illinois 60607

FILE NAME = ...\\D160J12-sht-spmkplan_01.dgn	USER NAME = sadhikari	DESIGNED - PWF	REVISIONS -	STATE OF ILLINOIS DEPARTMENT OF TRANSPORTATION	PROPOSED SIGNING AND PAVEMENT MARKING PLAN STONY ISLAND			F.A.I. RTE. 94	SECTION 2012-059-BR	COUNTY COOK	TOTAL SHEETS 631	SHEET NO. 229
PLOT SCALE = 50.000' / IN.	CHECKED - SA	REVISIONS -	SCALE: 1"=50'		SHEET NO. 1 OF 16 SHEETS	STA. TO STA.	CONTRACT NO. 60J12					
PLOT DATE = 3/29/2013	DATE - 3/29/2013	REVISIONS -	ILLINOIS FED. AID PROJECT									