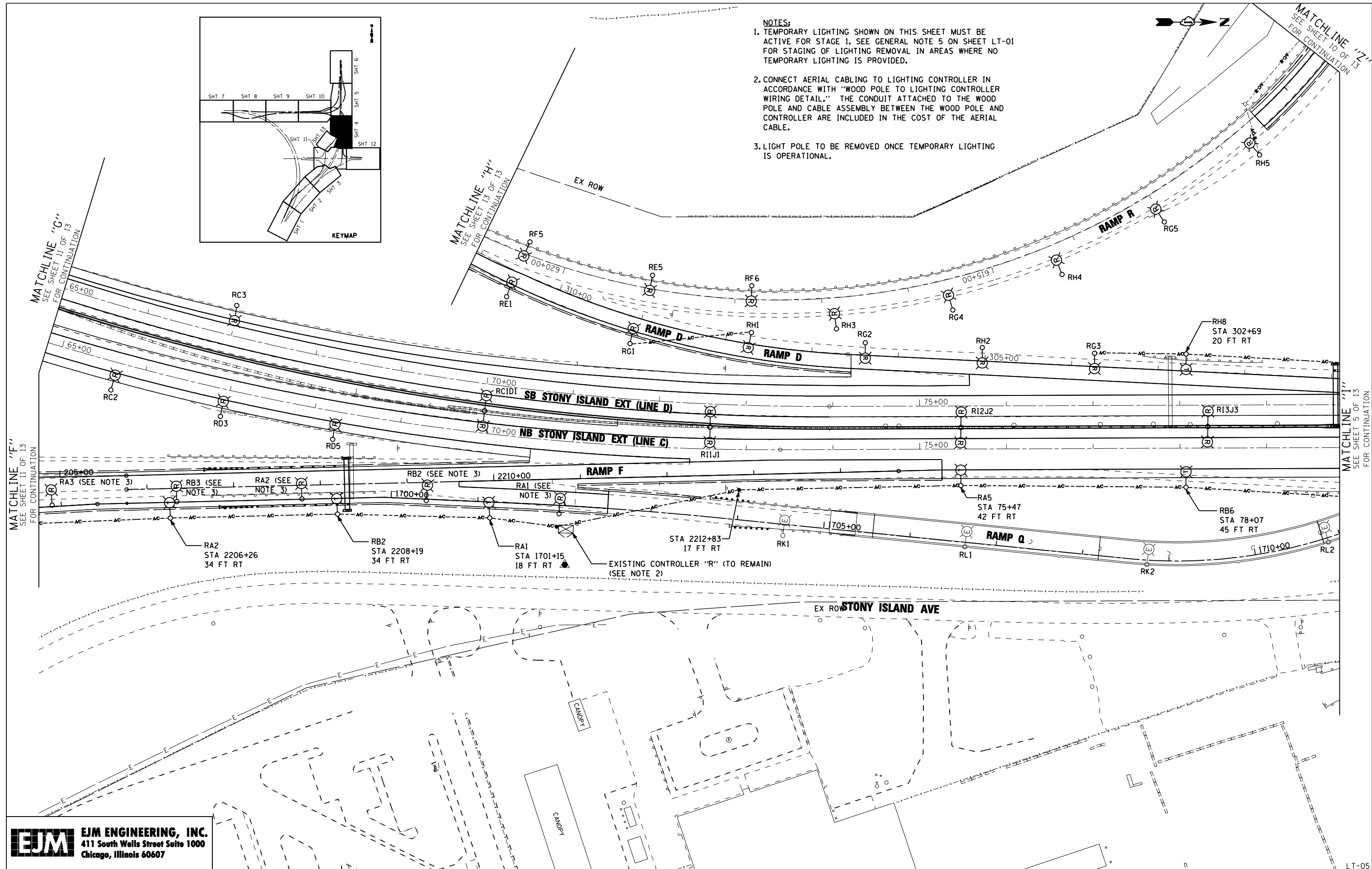
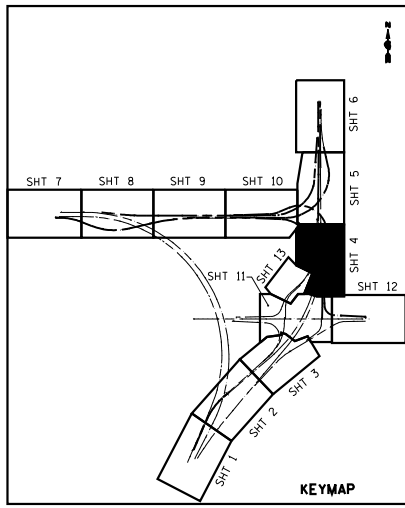


- NOTES:**
1. TEMPORARY LIGHTING SHOWN ON THIS SHEET MUST BE ACTIVE FOR STAGE 1. SEE GENERAL NOTE 5 ON SHEET LT-01 FOR STAGING OF LIGHTING REMOVAL IN AREAS WHERE NO TEMPORARY LIGHTING IS PROVIDED.
 2. CONNECT AERIAL CABLING TO LIGHTING CONTROLLER IN ACCORDANCE WITH "WOOD POLE TO LIGHTING CONTROLLER WIRING DETAIL." THE CONDUIT ATTACHED TO THE WOOD POLE AND CABLE ASSEMBLY BETWEEN THE WOOD POLE AND CONTROLLER ARE INCLUDED IN THE COST OF THE AERIAL CABLE.
 3. LIGHT POLE TO BE REMOVED ONCE TEMPORARY LIGHTING IS OPERATIONAL.



EJM ENGINEERING, INC.
 411 South Wells Street Suite 1000
 Chicago, Illinois 60607

FILE NAME :	USER NAME = rswanson	DESIGNED - JWJ	REVISED -
		DRAWN - BHH	REVISED -
	PLOT SCALE = 50.000' / IN.	CHECKED - MKR	REVISED -
	PLOT DATE = 5/3/2013	DATE - 3/29/13	REVISED -

**STATE OF ILLINOIS
 DEPARTMENT OF TRANSPORTATION**

**TEMPORARY LIGHTING AND REMOVAL PLAN
 STONY ISLAND EXTENSION**

SCALE: 1"=50' SHEET NO. 4 OF 13 SHEETS STA. TO STA.

F.A.I. RTE. 94	SECTION 2012-059-BR	COUNTY COOK	TOTAL SHEETS 631	SHEET NO. 283
			CONTRACT NO. 60J12	
ILLINOIS FED. AID PROJECT				

LT-05

s:\projects\3010 stony island feeder - bba\project work\cadd sheets\160J12-int-light-05.dgn