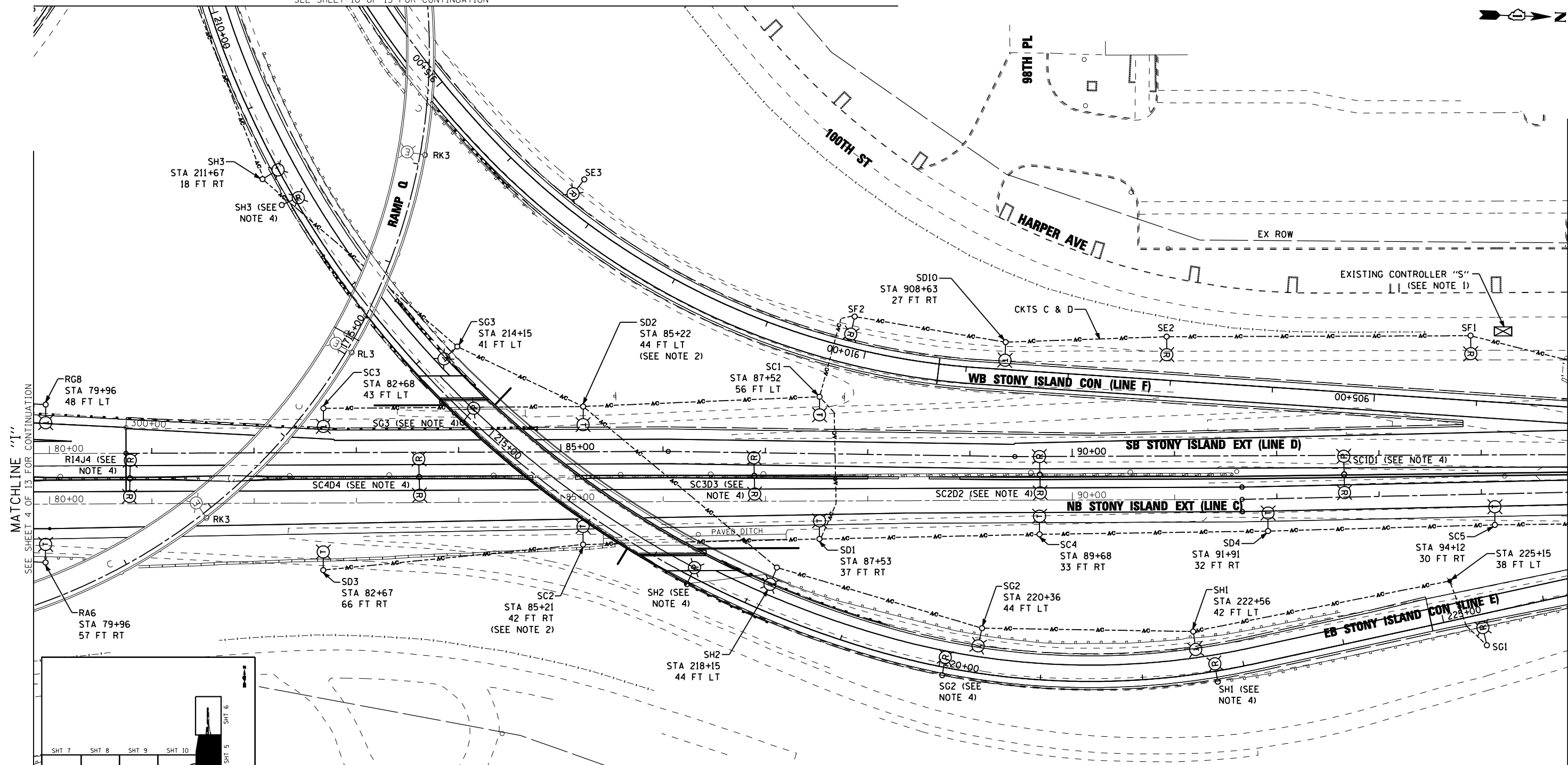
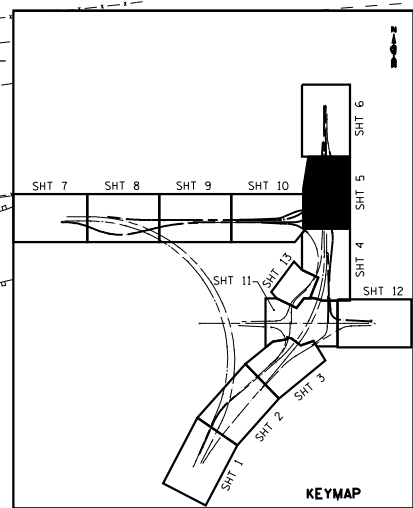


MATCHLINE "O"  
SEE SHEET 10 OF 13 FOR CONTINUATION



MATCHLINE "I"  
SEE SHEET 4 OF 13 FOR CONTINUATION

MATCHLINE "J"  
SEE SHEET 6 OF 13  
FOR CONTINUATION



- NOTES:**
1. REMOVE EXISTING CONTROLLER AND FOUNDATION AFTER ACTIVATION OF PROPOSED CONTROLLER "S."
  2. TEMPORARY LUMINAIRE SHALL BE INSTALLED AT 70 FT MOUNTING HEIGHT (ON 90 FOOT CLASS 3 WOOD POLE).
  3. TEMPORARY LIGHTING SHOWN ON THIS SHEET MUST BE ACTIVE FOR STAGE 1. SEE GENERAL NOTE 5 ON SHEET LT-01 FOR STAGING OF LIGHTING REMOVAL IN AREAS WHERE NO TEMPORARY LIGHTING IS PROVIDED.
  4. LIGHT POLE TO BE REMOVED ONCE TEMPORARY LIGHTING IS OPERATIONAL.

**EJM ENGINEERING, INC.**  
411 South Wells Street Suite 1000  
Chicago, Illinois 60607

FILE NAME :	USER NAME = rswanson	DESIGNED - JWJ	REVISED -
		DRAWN - BHH	REVISED -
	PLOT SCALE = 50.000' / IN.	CHECKED - MKR	REVISED -
	PLOT DATE = 5/3/2013	DATE - 3/29/13	REVISED -

**STATE OF ILLINOIS  
DEPARTMENT OF TRANSPORTATION**

TEMPORARY LIGHTING AND REMOVAL PLAN	
STONY ISLAND EXTENSION	
SCALE: 1"=50'	SHEET NO. 5 OF 13 SHEETS
STA.	TO STA.

F.A.I. RTE. 94	SECTION 2012-059-BR	COUNTY COOK	TOTAL SHEETS 631	SHEET NO. 284
CONTRACT NO. 60J12			ILLINOIS FED. AID PROJECT	

LT-06

s:\projects\3810 stony island feeder - bba\project work\cadd sheets\160J12-int-light-06.dgn