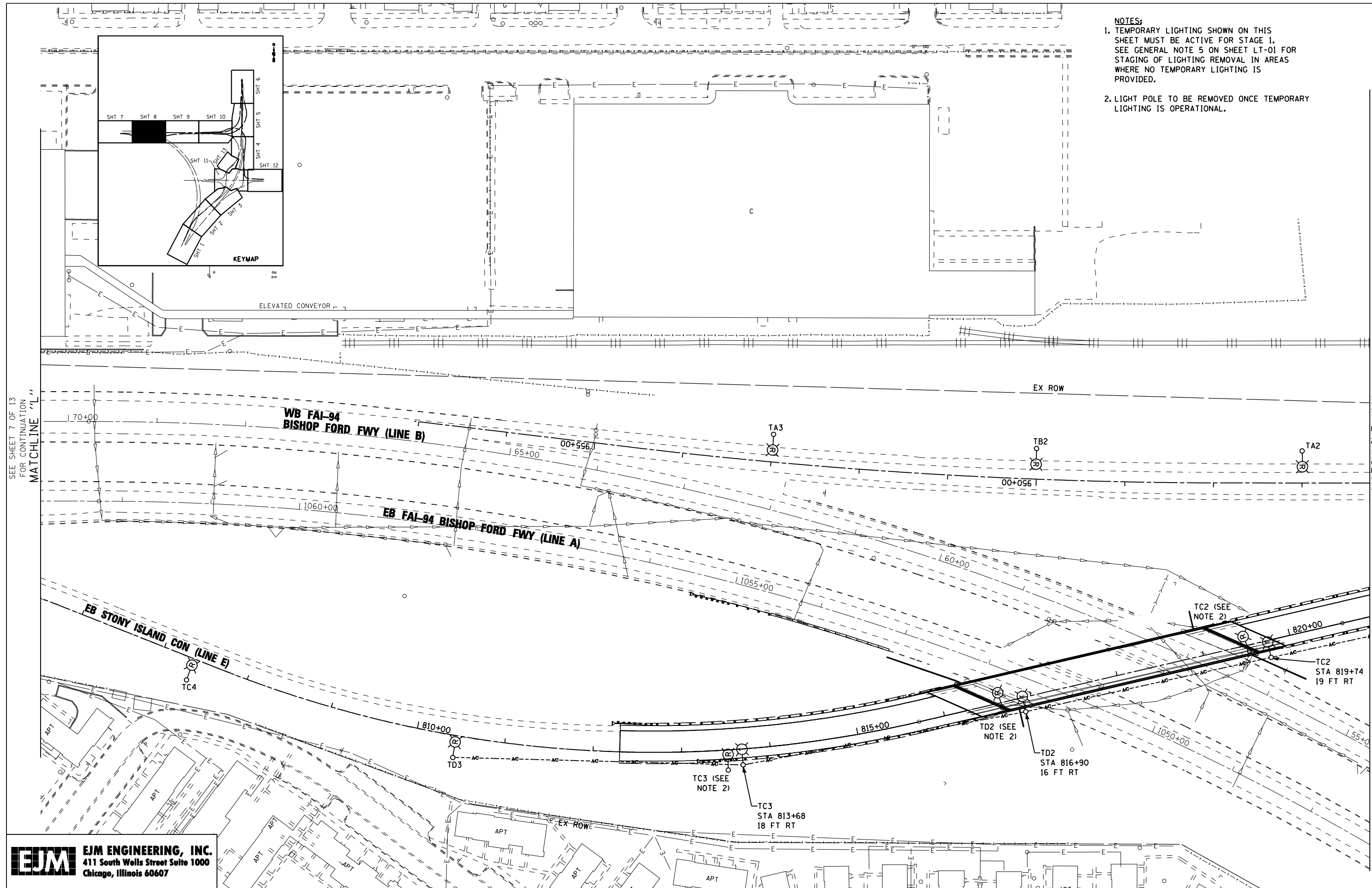
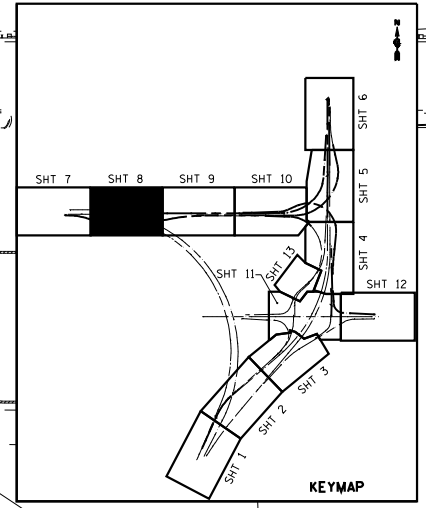


- NOTES:**
1. TEMPORARY LIGHTING SHOWN ON THIS SHEET MUST BE ACTIVE FOR STAGE 1. SEE GENERAL NOTE 5 ON SHEET LT-01 FOR STAGING OF LIGHTING REMOVAL IN AREAS WHERE NO TEMPORARY LIGHTING IS PROVIDED.
 2. LIGHT POLE TO BE REMOVED ONCE TEMPORARY LIGHTING IS OPERATIONAL.



EJM ENGINEERING, INC.
 411 South Wells Street Suite 1000
 Chicago, Illinois 60607

FILE NAME :	USER NAME = rswanson	DESIGNED - JWJ	REVISED -
		DRAWN - BHH	REVISED -
	PLOT SCALE = 50.000' / IN.	CHECKED - MKR	REVISED -
	PLOT DATE = 5/3/2013	DATE - 3/29/13	REVISED -

**STATE OF ILLINOIS
 DEPARTMENT OF TRANSPORTATION**

TEMPORARY LIGHTING AND REMOVAL PLAN
STONY ISLAND CONNECTOR

SCALE: 1"=50' SHEET NO. 8 OF 13 SHEETS STA. TO STA.

F.A.I. RTE. = 94	SECTION = 2012-059-BR	COUNTY = COOK	TOTAL SHEETS = 631	SHEET NO. = 287
CONTRACT NO. 60J12			ILLINOIS FED. AID PROJECT	

LT-09

s:\projects\3810 stony island feeder - bba\project work\cadd sheets\16012-int-light-09.dgn