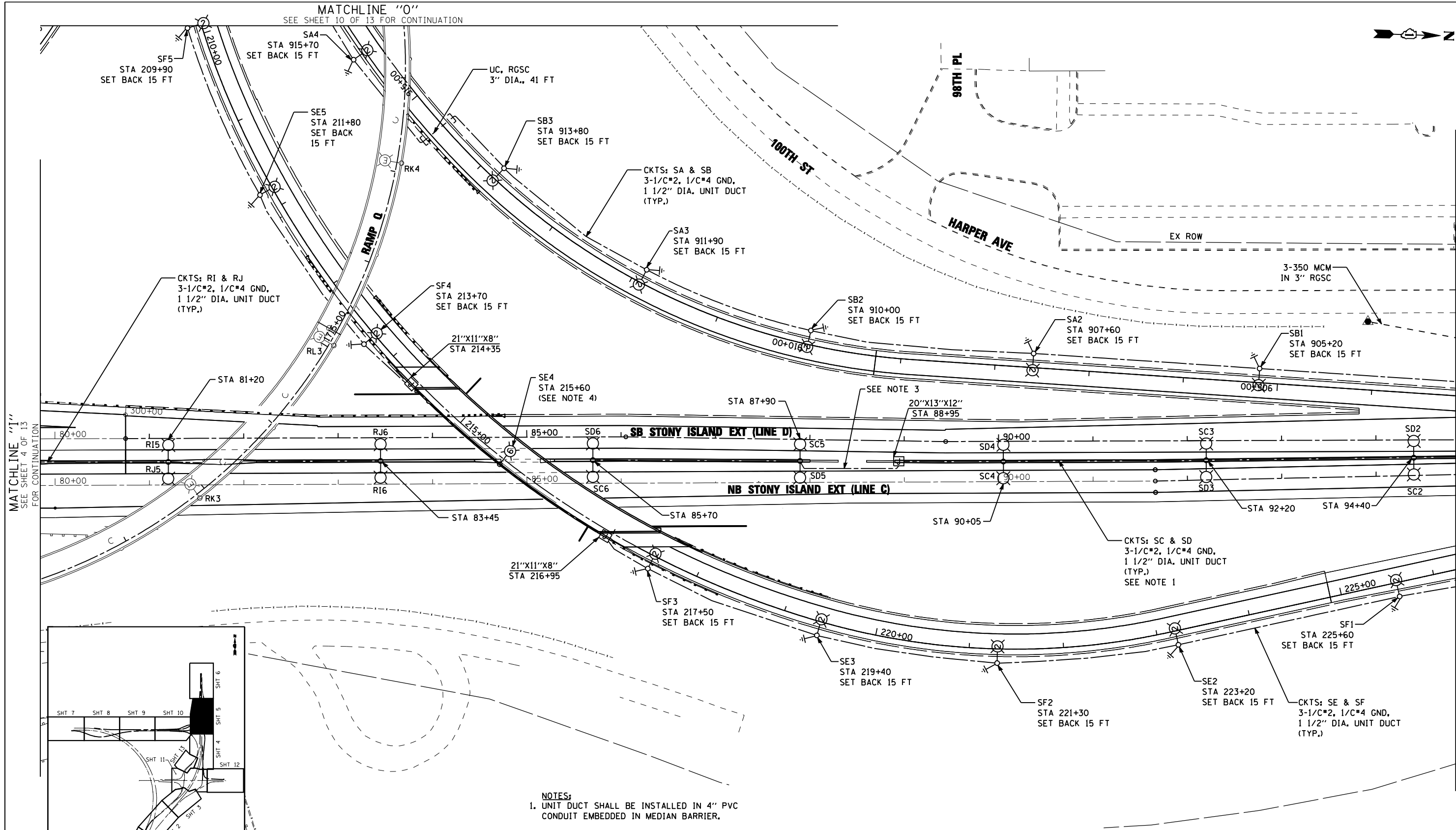


MATCHLINE "O"
SEE SHEET 10 OF 13 FOR CONTINUATION



MATCHLINE "I"
FOR CONTINUATION

MATCHLINE "J"
FOR CONTINUATION

- NOTES:**
1. UNIT DUCT SHALL BE INSTALLED IN 4" PVC CONDUIT EMBEDDED IN MEDIAN BARRIER.
 2. ALL JUNCTION BOXES SHOWN ON THIS SHEET ARE NON-METALLIC, EMBEDDED IN STRUCTURE.
 3. INSTALL UNIT DUCT IN 3" RGSC UNDER SHOULDER PAVEMENT AT MEDIAN TURNAROUND.
 4. LUMINAIRE TO BE TYPE M-C-II.

EJM ENGINEERING, INC.
411 South Wells Street Suite 1000
Chicago, Illinois 60607

FILE NAME =	USER NAME = rswanson	DESIGNED - JWJ	REVISED -
		DRAWN - BHH	REVISED -
	PLOT SCALE = 50.000' / IN.	CHECKED - MKR	REVISED -
	PLOT DATE = 5/3/2013	DATE - 3/29/13	REVISED -

**STATE OF ILLINOIS
DEPARTMENT OF TRANSPORTATION**

**PROPOSED LIGHTING PLAN
STONY ISLAND EXTENSION**

SCALE: 1"=50' SHEET NO. 5 OF 13 SHEETS STA. TO STA.

F.A.I. RTE.	SECTION	COUNTY	TOTAL SHEETS	SHEET NO.
94	2012-059-BR	COOK	631	297
CONTRACT NO. 60J12			ILLINOIS FED. AID PROJECT	

LT-19
 S:\Projects\3810 Stony Island Feeder - BBA\Project Work\CADD Sheets\1168012-alk-light-19.dgn