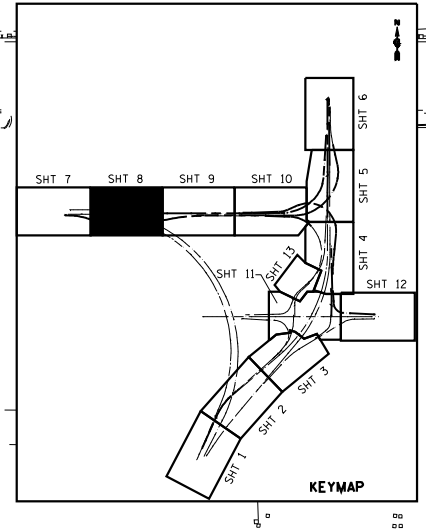
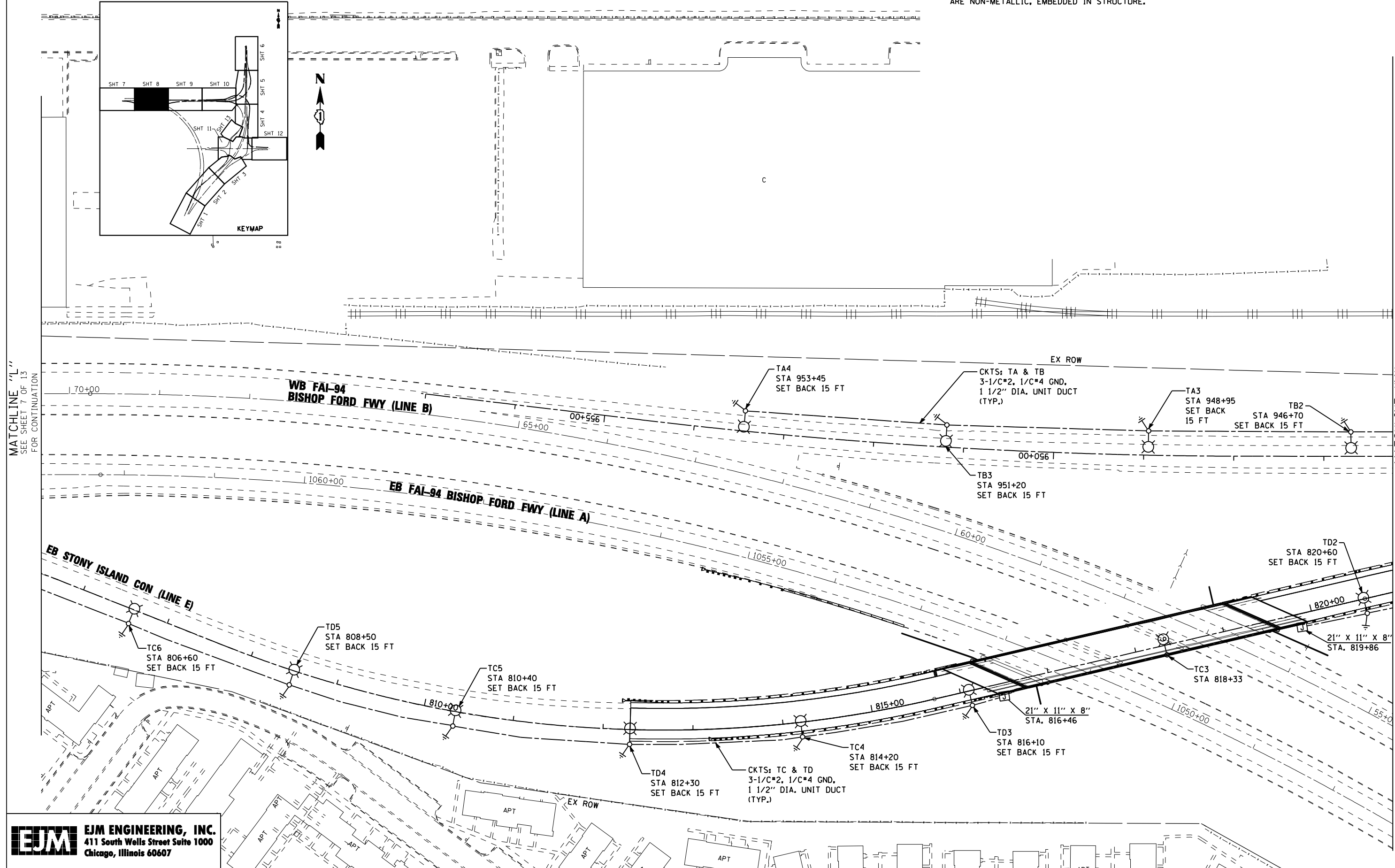


NOTES:
 1. ALL JUNCTION BOXES SHOWN ON THIS SHEET ARE NON-METALLIC, EMBEDDED IN STRUCTURE.



MATCHLINE "L"
 SEE SHEET 7 OF 13
 FOR CONTINUATION

MATCHLINE "M"
 SEE SHEET 9 OF 13
 FOR CONTINUATION



EJM ENGINEERING, INC.
 411 South Wells Street Suite 1000
 Chicago, Illinois 60607

FILE NAME =	USER NAME = rswanson	DESIGNED - JWJ	REVISED -
		DRAWN - BHH	REVISED -
	PLOT SCALE = 50.000' / IN.	CHECKED - MKR	REVISED -
	PLOT DATE = 3/29/2013	DATE - 3/29/13	REVISED -

**STATE OF ILLINOIS
 DEPARTMENT OF TRANSPORTATION**

**PROPOSED LIGHTING PLAN
 STONY ISLAND CONNECTOR**

SCALE: 1"=50' SHEET NO. 8 OF 13 SHEETS STA. TO STA.

F.A.I. RTE. 94	SECTION 2012-059-BR	COUNTY COOK	TOTAL SHEETS 631	SHEET NO. 300
CONTRACT NO. 60J12			ILLINOIS FED. AID PROJECT	

LT-22

s:\projects\3010 stony island feeder - bba\project work\cadd sheets\160J12-int-light-22.dgn