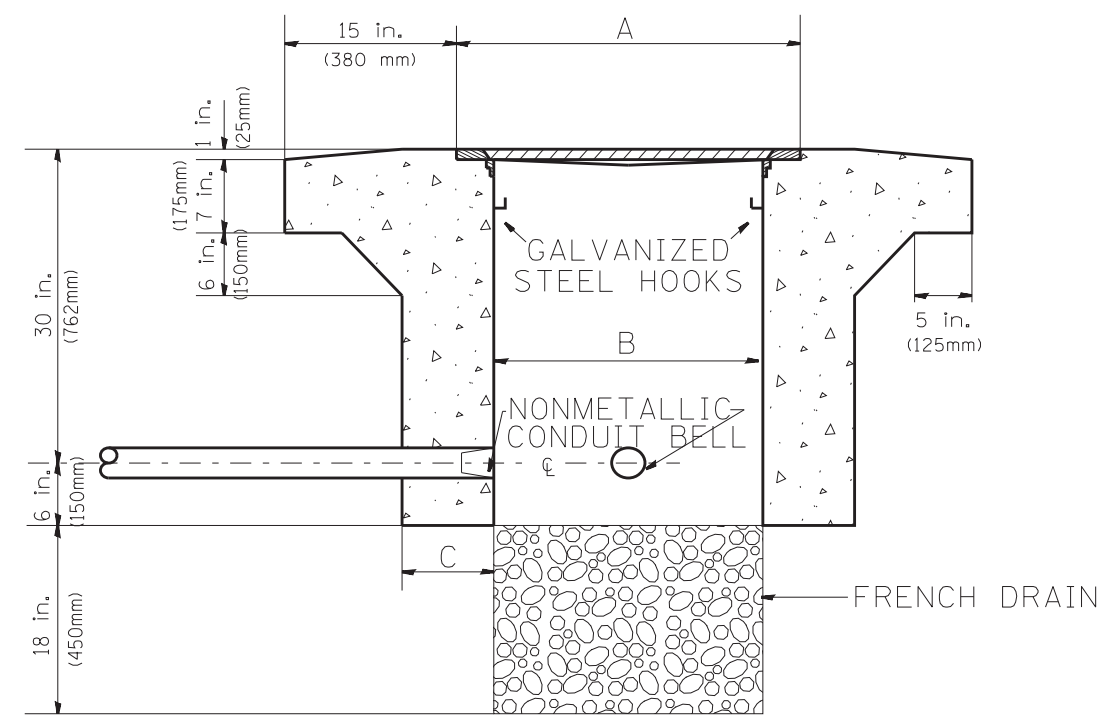


PLAN

HEAVY DUTY HANDHOLE MINIMUM DIMENSIONS (UNHINGED)

A	28" (711 mm)
B	22" (559 mm)
C	8" (200 mm)

(FRAME AND COVER 260 LBS. (118 Kg.) MIN.)



ELEVATION

HEAVY DUTY HANDHOLE SPECIAL MINIMUM DIMENSIONS

A	31.5" (800 mm)
B	30.0" (762 mm)
C	10.0" (250 mm)

(FRAME AND COVER 405 LBS. (184 Kg. (405))

PC CONCRETE - HEAVY DUTY HAND HOLE

FILE NAME =	USER NAME = mezag	DESIGNED - R.L.	REVISED - 04/97	STATE OF ILLINOIS DEPARTMENT OF TRANSPORTATION TRAFFIC SYSTEMS CENTER	PC CONCRETE - HEAVY DUTY HAND HOLE	F.A. RTE.	SECTION	COUNTY	TOTAL SHEETS	SHEET NO.
et:\pw\work\pidot\mezag\d0287541\TSCTYP.dgn	DRAWN - G.M.	REVISED -	94			2012-059-BR	COOK	631	370	
PLOT SCALE = 100.0000' / 1"	CHECKED - R.L.	REVISED -	CONTRACT NO. 60J12							
PLOT DATE = 12/6/2012	DATE - 09/11/96	REVISED -	FED. ROAD DIST. NO.			ILLINOIS FED. AID PROJECT				
				SCALE: NONE	SHEET NO. 11 OF 16 SHEETS	STA.	TO STA.		TRAFFIC SYSTEMS CENTER (TY-1TSC-400#15)	