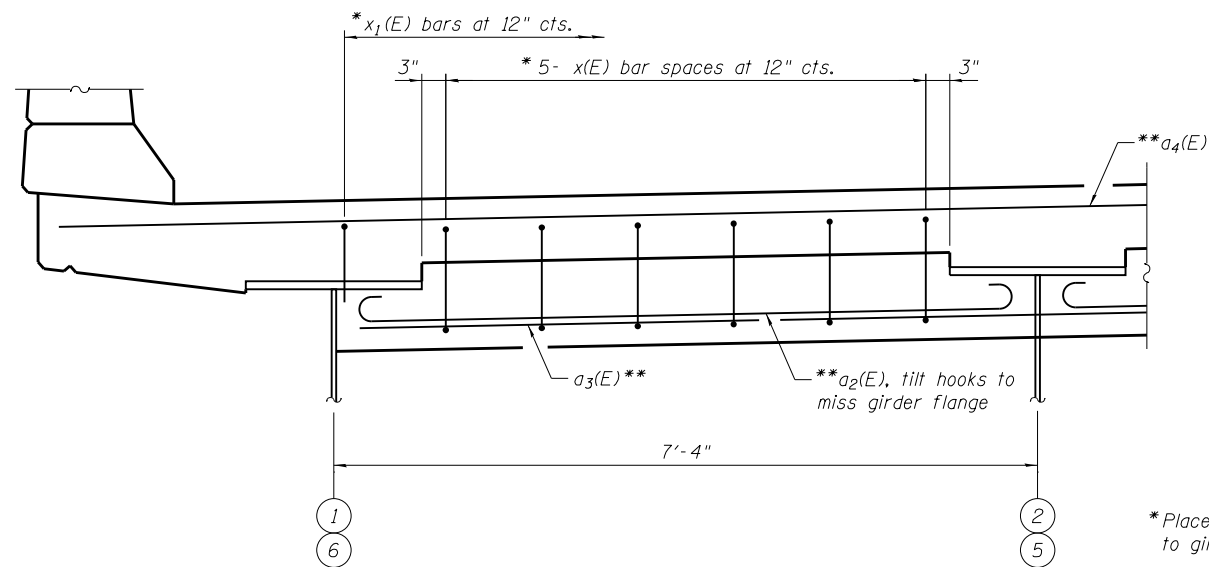


2/21/29 PM

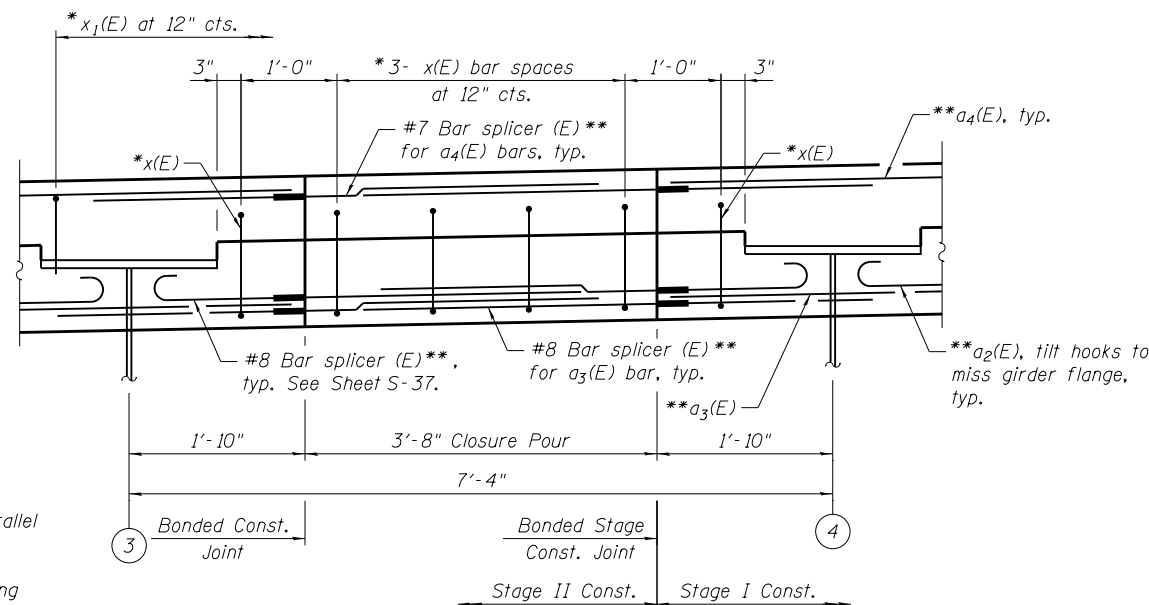
3/29/2013

S:\1072_05_CADD\Structure\1\SN 0162470\CADD Sheets\0162470-60J12-012-SD01.dgn

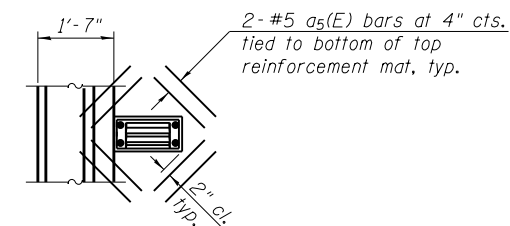


EDGE BEAM ELEVATION
 (Typical between beams U.O.N.)

*Placed parallel to girders
 **Placed along skew

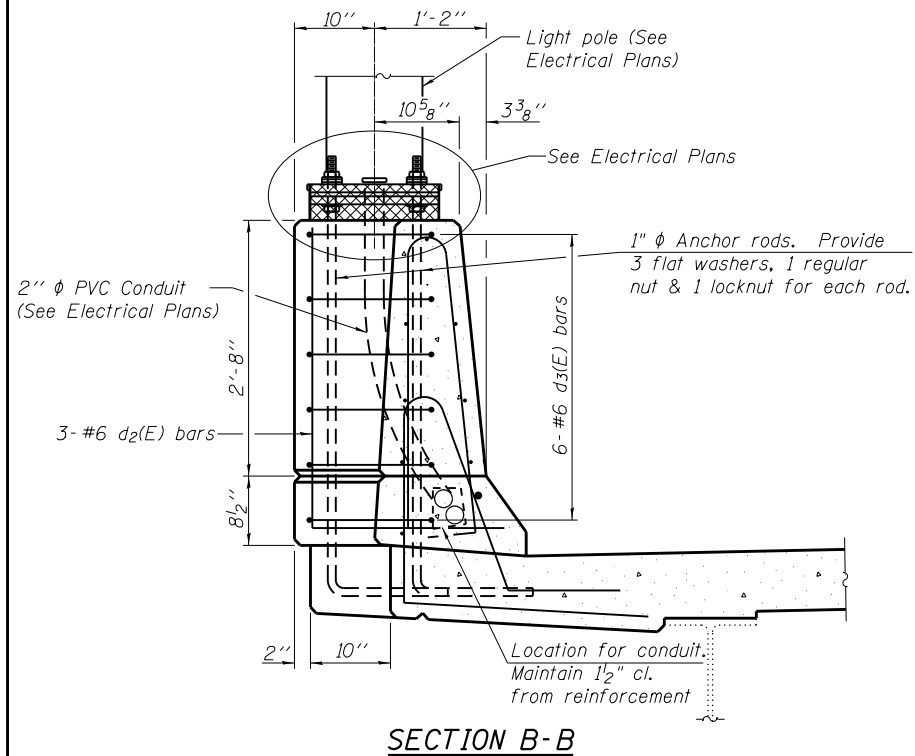


EDGE BEAM ELEVATION
 (At Closure Pour)

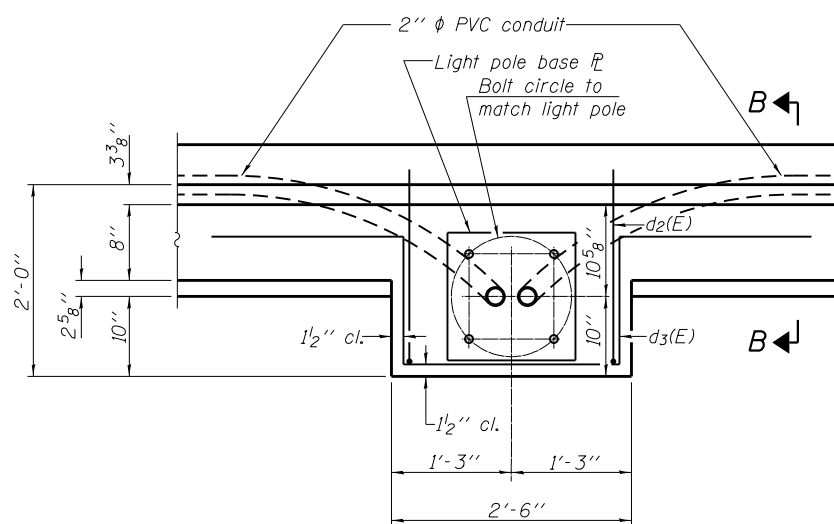


SCUPPER DETAIL

Note:
 Cut longitudinal reinforcement to clear drainage scuppers.

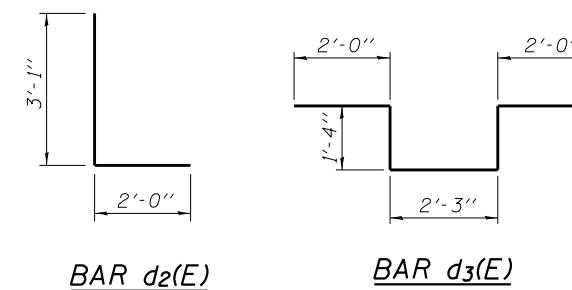


SECTION B-B



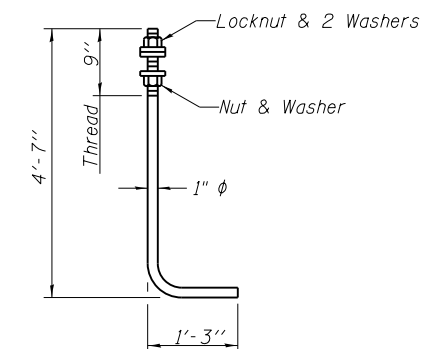
LIGHT POLE FOUNDATION PLAN

Note:
 Cost of anchor rods is included with Concrete Superstructure.



BAR d₂(E)

BAR d₃(E)



ANCHOR ROD

(ASTM F 1554 Grade 105, full length hot dipped galvanized)

BOWMAN, BARRETT & ASSOCIATES INC.
 CONSULTING ENGINEERS
 Chicago, Illinois
 312.228.0100
 www.bbainc.com

USER NAME =	DESIGNED - TL	REVISD -
PLOT SCALE =	CHECKED - BAK	REVISD -
PLOT DATE = 03/29/2013	DRAWN - TL	REVISD -
	CHECKED - BAK	REVISD -

STATE OF ILLINOIS
 DEPARTMENT OF TRANSPORTATION

SUPERSTRUCTURE DETAILS I
STRUCTURE NO. 016-2470

SHEET NO. S-12 OF S-53 SHEETS

F.A.I. RTE.	SECTION	COUNTY	TOTAL SHEETS	SHEET NO.
94	2012-059-BR	COOK	631	387
CONTRACT NO. 60J12				

ILLINOIS FED. AID PROJECT