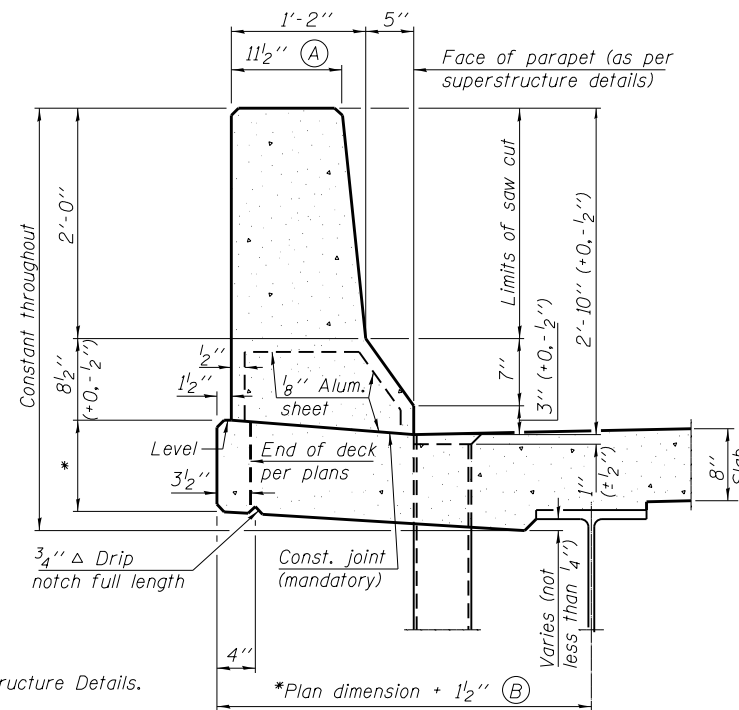


**GENERAL NOTES**

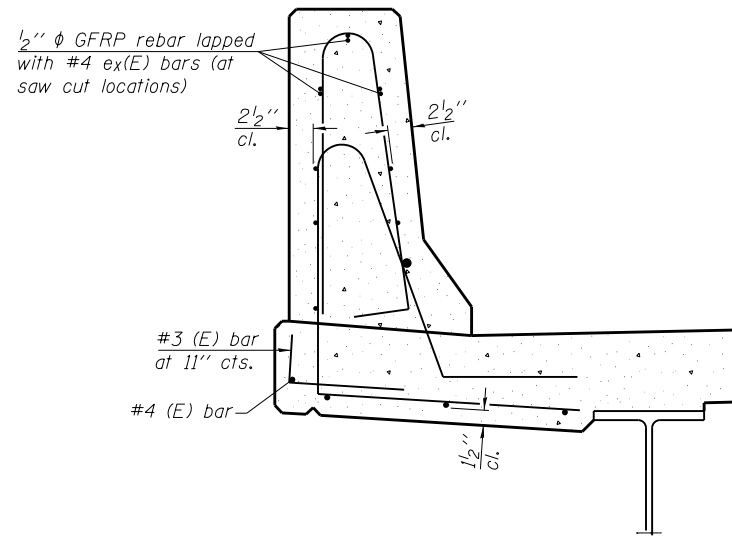
All dimensions shall remain the same as shown on superstructure details, except dimensions A and B which are to be revised as shown to provide additional clearance. Additional concrete needed to revise dimension A and B = 0.0165 cu. yds./ft. for 34" parapet or = 0.0223 cu. yds./ft. for 42" parapet. Place aluminum sheet in curb portion at and near piers. Full thickness saw cut at all joint locations in lieu of cork joint filler. Steel superstructure shown. Other superstructure types similar.



**34" F SHAPE PARAPET SECTION**  
(Showing dimensions)

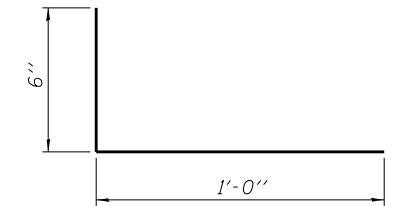
\*See Superstructure Details.

\*Plan dimension + 1 1/2" (B)

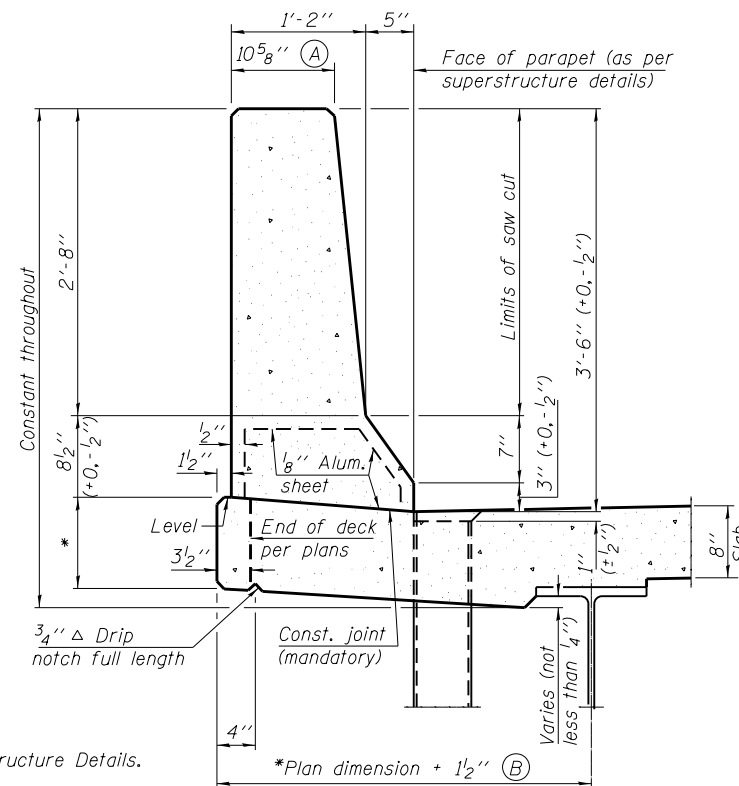


**SECTION**

(34" parapet shown - 42" parapet similar)  
(Showing reinforcement clearances for slip forming and additional reinforcement bars)



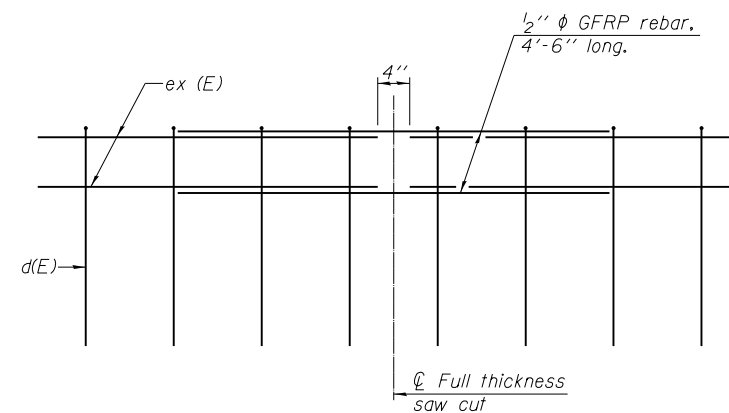
**#3 (E) BAR**



**42" F SHAPE PARAPET SECTION**  
(Showing dimensions)

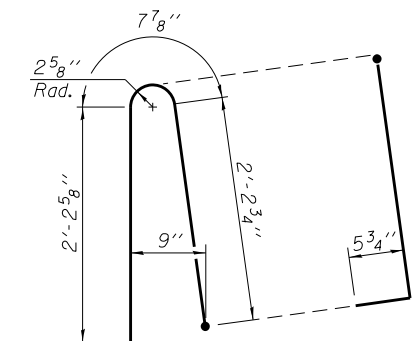
\*See Superstructure Details.

\*Plan dimension + 1 1/2" (B)

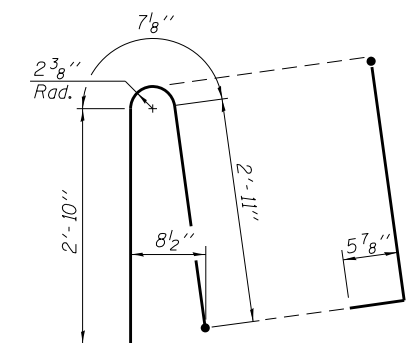


**GFRP REBAR STIFFENING DETAIL**

(Place as shown in parapet section at each parapet joint location.)



**ALTERNATE BAR d(E)**  
(For 34" parapet when conduit is present)



**ALTERNATE BAR d(E)**  
(For 42" parapet when conduit is present)

SFP 34-42 8-16-12

2/21/30 PM

3/29/2013

S:\1072\_05\_CADD\Structure\1\SN 0162470\CADD Sheets\0162470-60J12-014-PS01.dgn

BOWMAN, BARRETT & ASSOCIATES INC.  
CONSULTING ENGINEERS  
Chicago, Illinois  
312.228.0100  
www.bbainc.com

USER NAME =	DESIGNED - TL	REVISD -
PLOT SCALE =	CHECKED - BAK	REVISD -
PLOT DATE = 03/29/2013	DRAWN - MTR	REVISD -
	CHECKED - BAK	REVISD -

STATE OF ILLINOIS  
DEPARTMENT OF TRANSPORTATION

CONCRETE PARAPET SLIPFORMING OPTION  
STRUCTURE NO. 016-2470

SHEET NO. S-14 OF S-53 SHEETS

F.A.I. R.T.E.	SECTION	COUNTY	TOTAL SHEETS	SHEET NO.
94	2012-059-BR	COOK	631	389
CONTRACT NO. 60J12				
ILLINOIS FED. AID PROJECT				