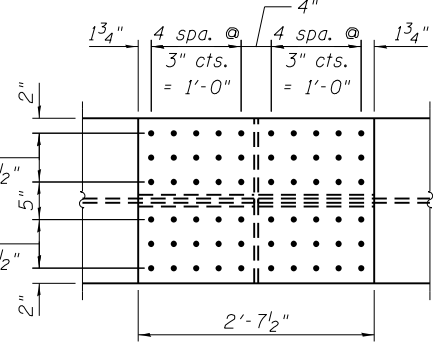
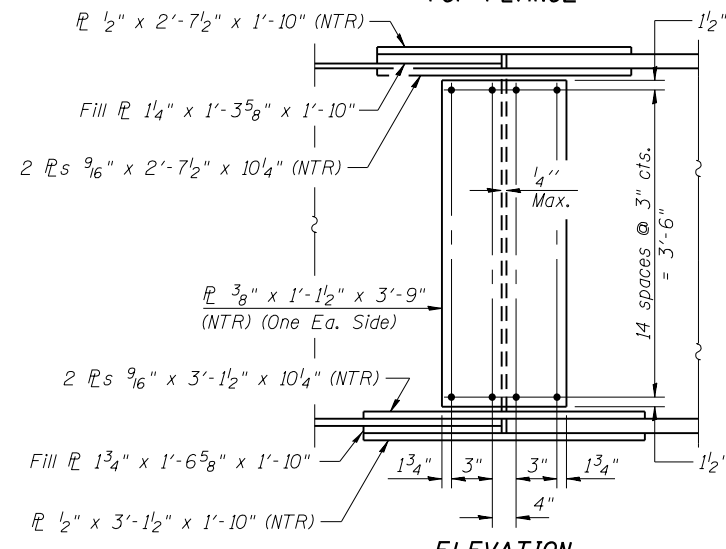


* Install articulated temporary bracing before primary Stage I deck pour and replace with Interior Cross Frame D1 before deck closure pour. See Sheet S-23 for articulated temporary bracing details.

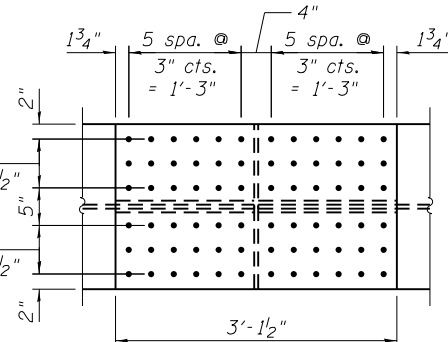
FRAMING PLAN



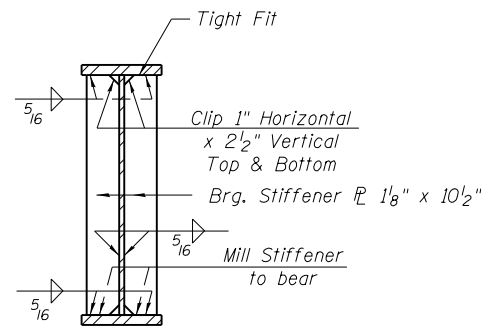
TOP FLANGE



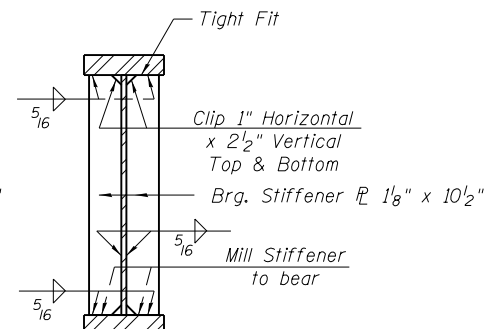
ELEVATION



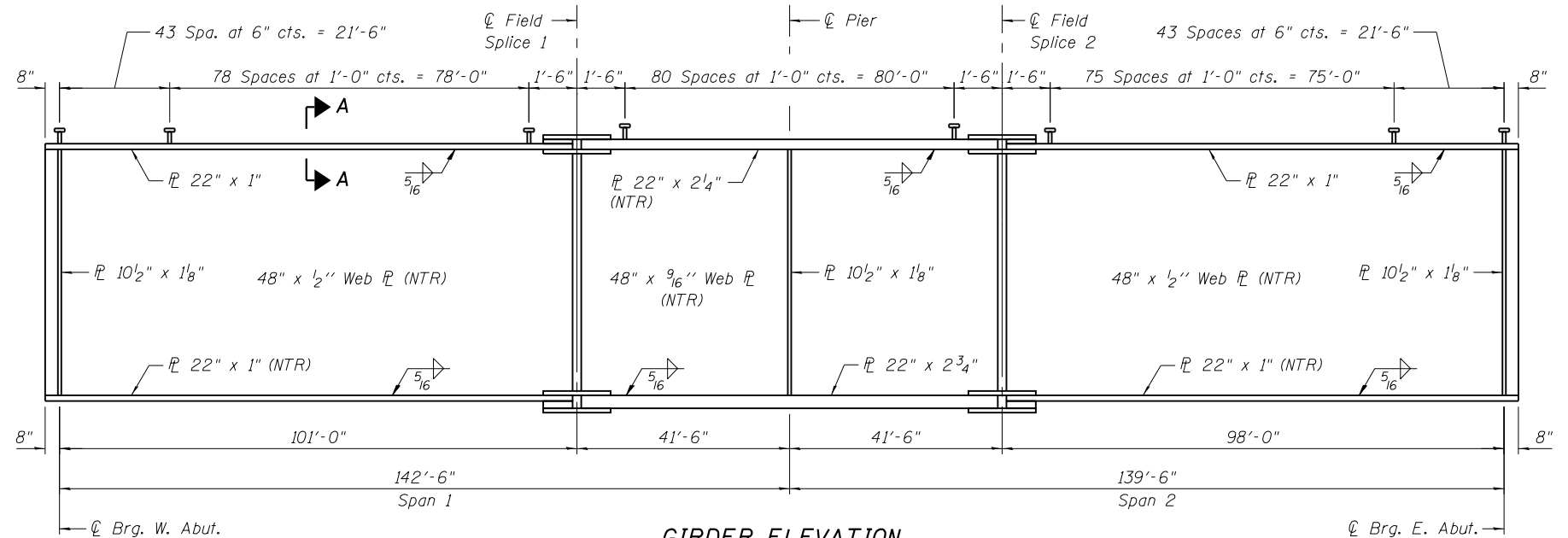
BOTTOM FLANGE
FIELD SPLICE DETAIL
(12 Required)



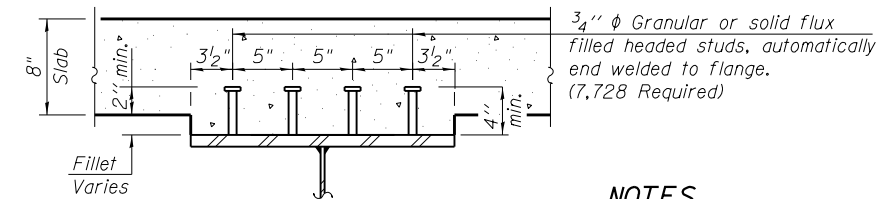
SECTION AT ABUTMENT



SECTION AT PIER



GIRDER ELEVATION



SECTION A-A

3/4" ϕ Granular or solid flux filled headed studs, automatically end welded to flange. (7,728 Required)

NOTES

1. Webs, flanges, splice plates and bearing stiffeners to be AASHTO M270 Grade 50 steel.
2. Plates designated "NTR" shall conform to the Impact Testing Requirement, Zone 2.

2/21/12 PM

3/29/2013

S:\1072_05_CADD\Structure\1\SN_0162470\CADD_Sheets\0162470-60J12-020-FR01.dgn

BOWMAN, BARRETT & ASSOCIATES INC.
CONSULTING ENGINEERS
Chicago, Illinois
312.228.0100
www.bbainc.com

| | | |
|------------------------|---------------|-----------|
| USER NAME = | DESIGNED - TL | REVISED - |
| PLOT SCALE = | CHECKED - BAK | REVISED - |
| PLOT DATE = 03/29/2013 | DRAWN - TL | REVISED - |
| | CHECKED - BAK | REVISED - |

STATE OF ILLINOIS
DEPARTMENT OF TRANSPORTATION

FRAMING PLAN
STRUCTURE NO. 016-2470
SHEET NO. S-20 OF S-53 SHEETS

| F.A.I. RTE. | SECTION | COUNTY | TOTAL SHEETS | SHEET NO. |
|---------------------------|-------------|--------|--------------|-----------|
| 94 | 2012-059-BR | COOK | 631 | 395 |
| CONTRACT NO. 60J12 | | | | |
| ILLINOIS FED. AID PROJECT | | | | |