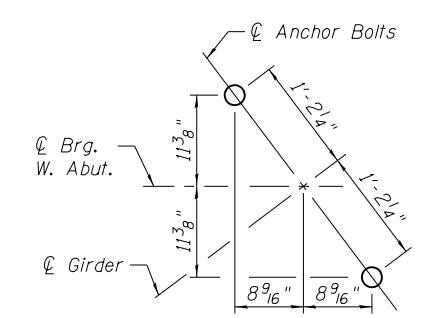


Girder Number	Brg. Seat Elev.	Step
1	614.81	6"
2	615.31	5 1/2"
3	615.76	5"
4	616.17	4 1/2"
5	616.54	4 1/8"
6	616.89	

**DETAIL 1**  
(Reinf. omitted for clarity)



**ANCHOR BOLT LAYOUT**

Notes:  
 N.F. - denotes Near Face  
 B.F. - denotes Back Face  
 E.F. - denotes Each Face  
 U.O.N. - denotes Unless Otherwise Noted

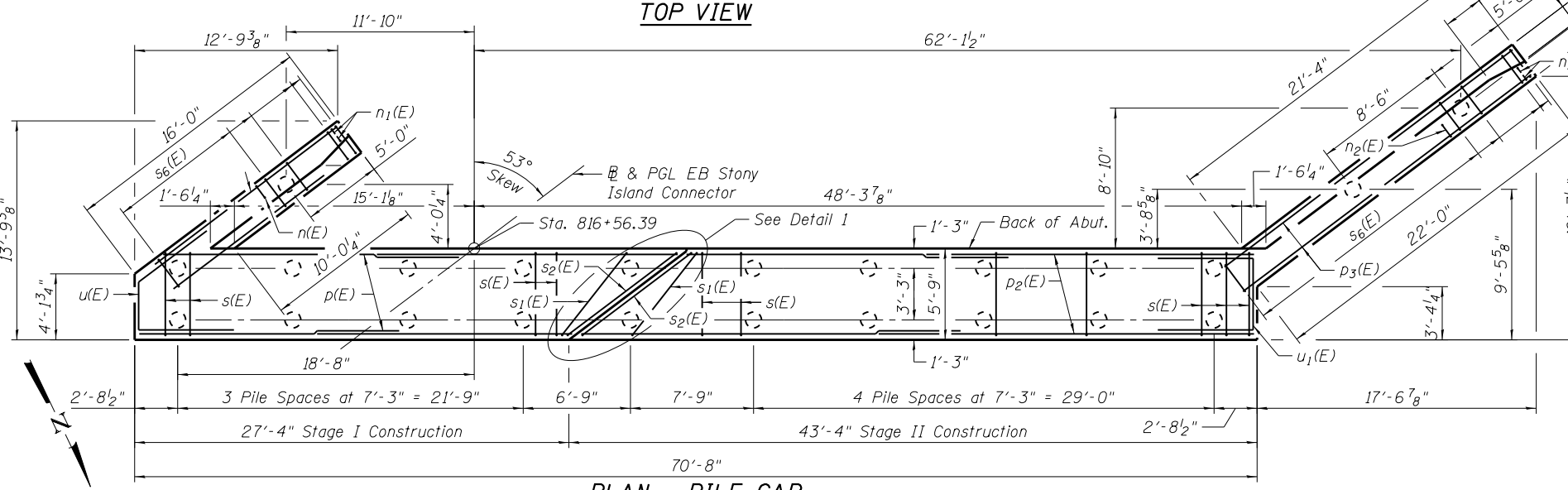
**MIN. BAR LAP**  
 #5 - 3'-3"  
 #7 - 5'-2"

Bars indicated thus 12x2- #7 etc. indicates 12 lines of bars with 2 lengths per line.  
 For Bill of Material and Bar Bending Details, see Sheet S-31.  
 For details of Bar Splicers, see sheet S-38.  
 For details of metal shell piles see sheet S-37.

Pile locations may be adjusted up to 6" (parallel to  $\phi$  Brg.) from the locations shown herein in order to miss existing piles. All adjusted pile locations must be approved by the Engineer prior to driving.

**PILE DATA**

Type: Metal Shell - 12"  $\phi$  with 0.250" walls  
 Nominal Required Bearing: 210 Kips  
 Factored Resistance Available: 115 Kips  
 Est. Length: 50'  
 No. Production Piles: 22  
 No. Test Piles: 1



**PLAN - PILE CAP**

2/21/13 PM

3/29/2013

S:\1072\_05\_CADD\Structure\1 SN 0162470\CADD Sheets\0162470-60J12-029-walldgr

BOWMAN, BARRETT & ASSOCIATES INC.  
 CONSULTING ENGINEERS  
 Chicago, Illinois  
 312.228.0100  
 www.bbainc.com

USER NAME =	DESIGNED - TL	REVISED -
PLOT SCALE =	CHECKED - BAK	REVISED -
PLOT DATE = 03/29/2013	DRAWN - TL	REVISED -
	CHECKED - JGC	REVISED -

STATE OF ILLINOIS  
 DEPARTMENT OF TRANSPORTATION

WEST ABUTMENT PLAN AND ELEVATION  
 STRUCTURE NO. 016-2470

SHEET NO. S-29 OF S-53 SHEETS

F.A.I. RT.	SECTION	COUNTY	TOTAL SHEETS	SHEET NO.
94	2012-059-BR	COOK	631	404
CONTRACT NO. 60J12				
ILLINOIS FED. AID PROJECT				