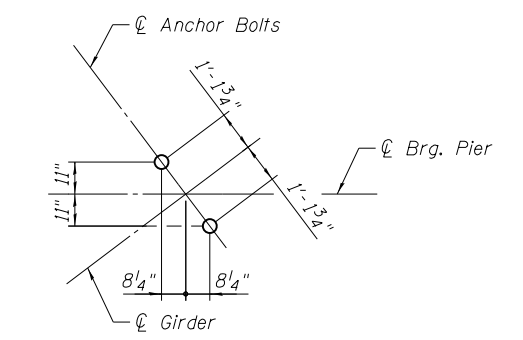


BEARING SEAT ELEVATIONS

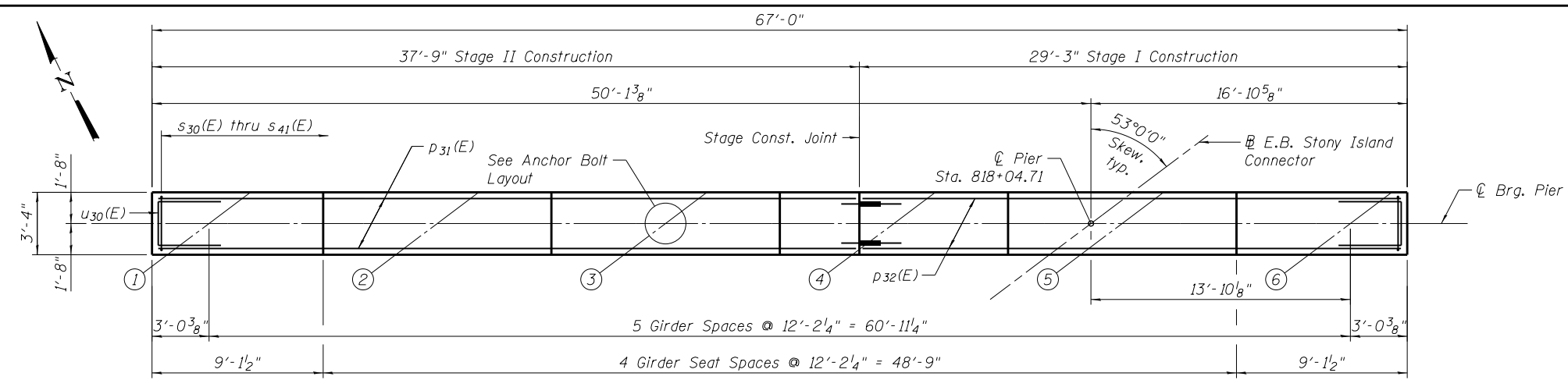
Girder	Brg. Seat Elevation
1	617.69
2	617.98
3	618.28
4	618.56
5	618.84
6	619.12



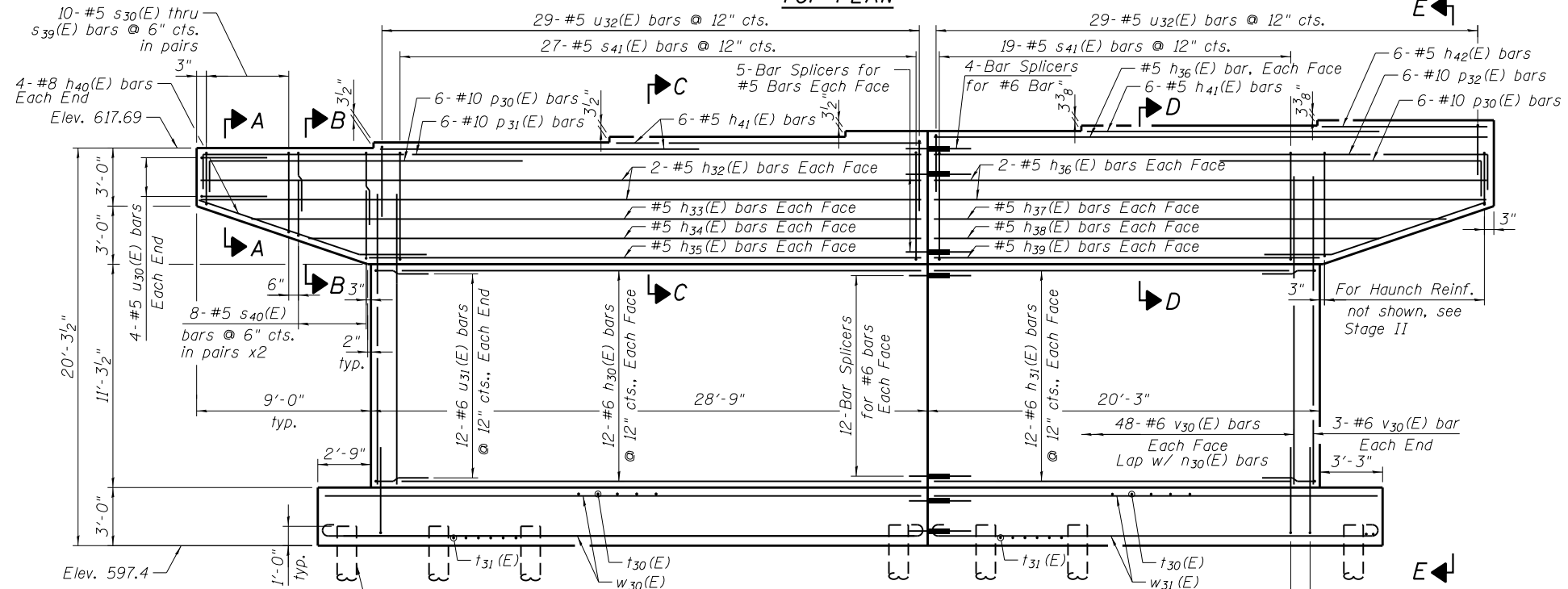
ANCHOR BOLT LAYOUT

MIN. BAR LAP

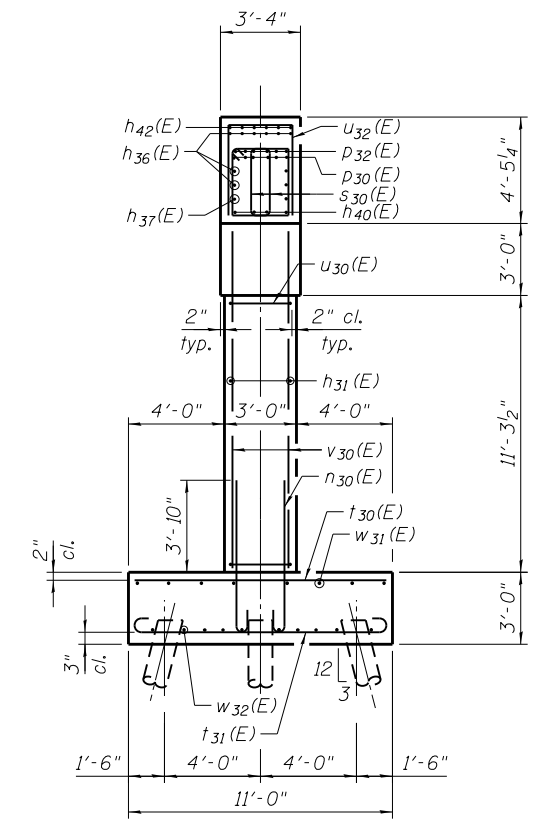
- #5 - 3'-3"
- #6 - 3'-10"



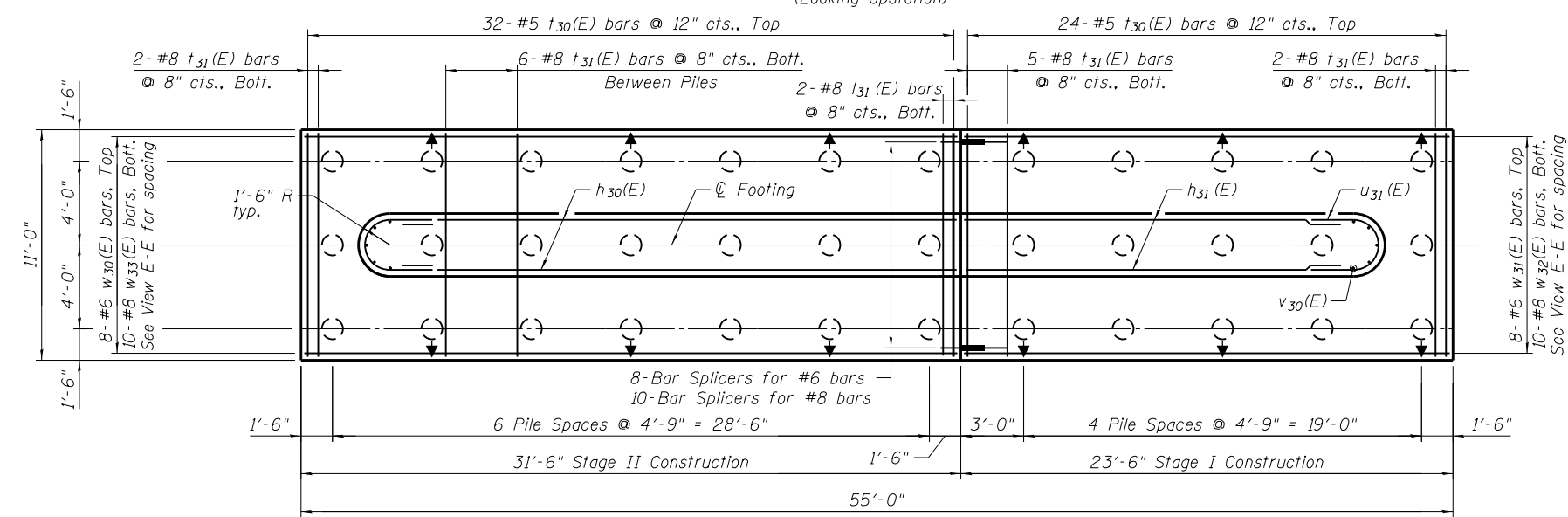
TOP PLAN



ELEVATION
(Looking Upstation)



VIEW E-E



FOOTING PLAN

LEGEND

- ⊙ - Battered Pile
- - Vertical Pile

PILE DATA

Type: Metal Shell - 14" ϕ with 0.312" walls
 Nominal Required Bearing: 390 kips
 Factored Resistance Available: 215 kips
 Est. Length: 40'
 No. Production Piles: 35
 No. Test Piles: 1

Notes:
 Space reinforcement in cap to miss anchor bolts.
 Pour steps monolithically with cap.
 For details of piles, see Sheet S-37.
 See Sheet No. S-36 for Sections A-A, B-B, C-C, & D-D.
 See Sheet No. S-36 for Bill of Material and Bar Bending Diagrams.

2/21/38 PM

3/29/2013

S:\1072_05_CADD\Structure\1\SN_0162470_CADD_Sheets\0162470-60J12-035-F101.dgn

BOWMAN, BARRETT & ASSOCIATES INC.
 CONSULTING ENGINEERS
 Chicago, Illinois
 312.228.0100
 www.bbainc.com

USER NAME =	DESIGNED - SF	REVISD -
PLOT SCALE =	CHECKED - BAK	REVISD -
PLOT DATE = 03/29/2013	DRAWN - MTR	REVISD -
	CHECKED - SF	REVISD -

STATE OF ILLINOIS
 DEPARTMENT OF TRANSPORTATION

PIER DETAILS I
 STRUCTURE NO. 016-2470
 SHEET NO. S-35 OF S-53 SHEETS

F.A.I. RTE.	SECTION	COUNTY	TOTAL SHEETS	SHEET NO.
94	2012-059-BR	COOK	631	410
CONTRACT NO. 60J12				
ILLINOIS FED. AID PROJECT				