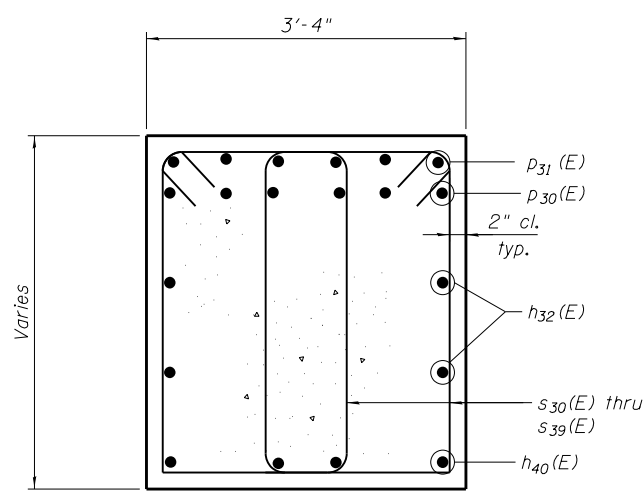


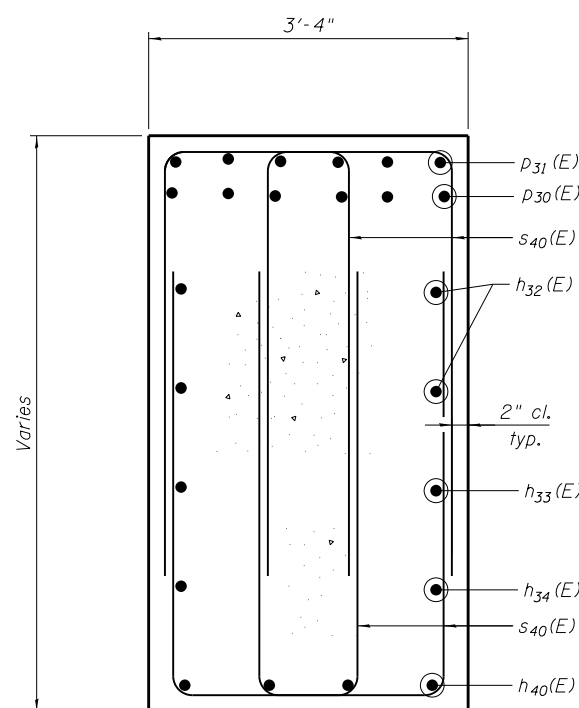
2/21/13 8 PM

3/29/2013

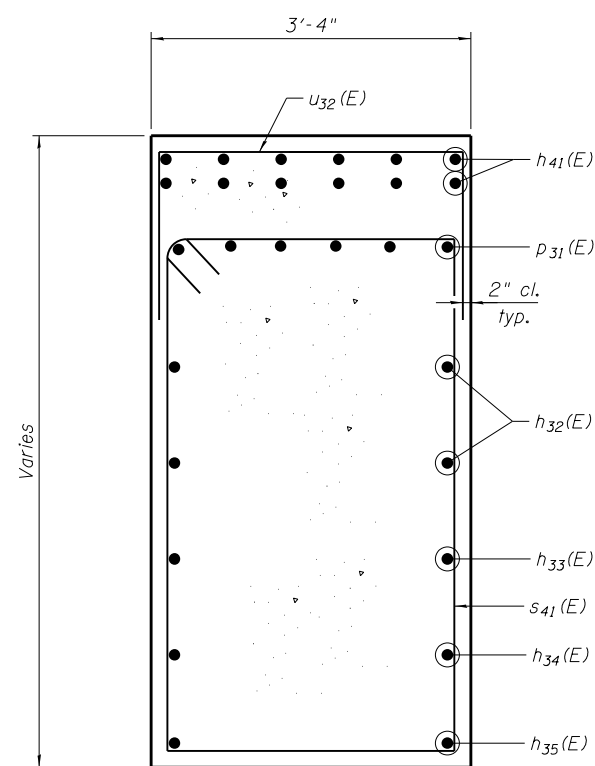
S:\1072_05_CADD\Structure\1 SN 0162470.CADD Sheets\0162470-60J12-036-P102.dgn



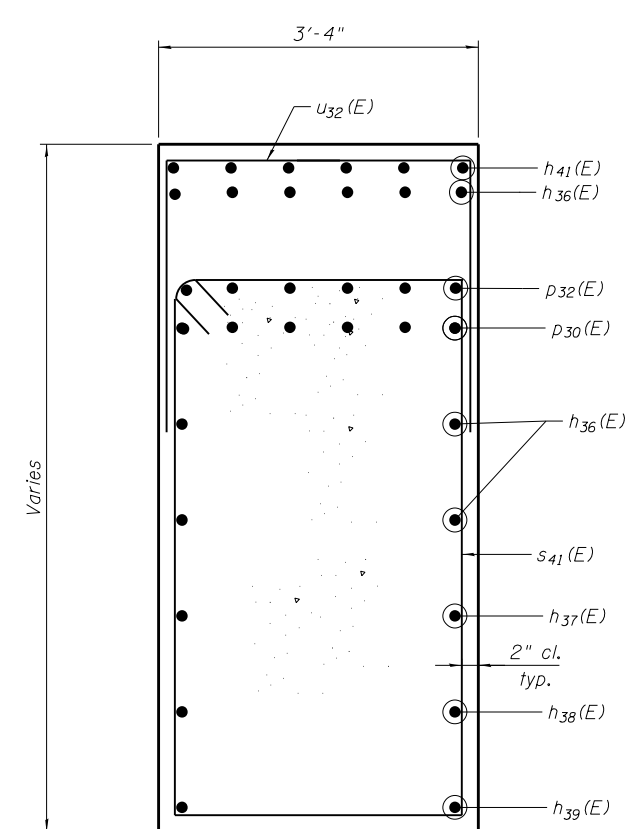
SECTION A-A



SECTION B-B



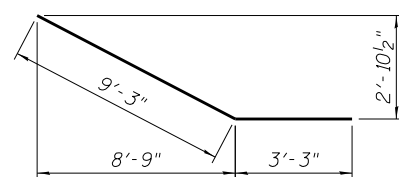
SECTION C-C



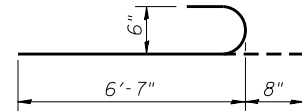
SECTION D-D

PIER
BILL OF MATERIAL

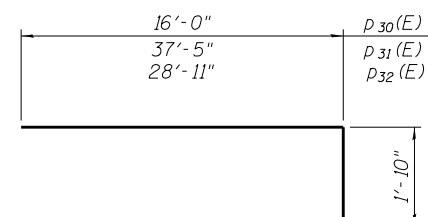
Bar	No.	Size	Length	Shape
h30(E)	24	#6	27'-0"	—
h31(E)	24	#6	18'-6"	—
h32(E)	4	#5	37'-4"	—
h33(E)	2	#5	34'-4"	—
h34(E)	2	#5	31'-4"	—
h35(E)	2	#5	28'-6"	—
h36(E)	6	#5	28'-11"	—
h37(E)	2	#5	25'-11"	—
h38(E)	2	#5	22'-11"	—
h39(E)	2	#5	19'-11"	—
h40(E)	8	#8	12'-6"	—
h41(E)	18	#5	16'-3"	—
h42(E)	6	#5	8'-9"	—
n30(E)	102	#6	7'-3"	U
p30(E)	12	#10	17'-10"	—
p31(E)	6	#10	39'-3"	—
p32(E)	6	#10	30'-9"	—
s30(E)	4	#5	10'-3"	□
s31(E)	4	#5	10'-7"	□
s32(E)	4	#5	10'-11"	□
s33(E)	4	#5	11'-3"	□
s34(E)	4	#5	11'-7"	□
s35(E)	4	#5	11'-11"	□
s36(E)	4	#5	12'-3"	□
s37(E)	4	#5	12'-7"	□
s38(E)	4	#5	12'-11"	□
s39(E)	4	#5	13'-3"	□
s40(E)	64	#5	10'-9"	□
s41(E)	46	#5	18'-3"	□
t30(E)	56	#5	10'-8"	—
t31(E)	71	#8	12'-4"	—
u30(E)	8	#5	9'-4"	U
u31(E)	24	#6	11'-10"	U
u32(E)	58	#5	8'-8"	U
v30(E)	102	#6	13'-9"	—
w30(E)	8	#6	31'-2"	—
w31(E)	8	#6	23'-2"	—
w32(E)	10	#8	25'-0"	—
w33(E)	10	#8	34'-0"	—
Structure Excavation		Cu. Yd.	151	
Concrete Structures		Cu. Yd.	178.6	
Reinforcement Bars, Epoxy Coated		Pound	17,200	
Furnishing Metal Shell Piles 14" x 0.312"		Foot	1,400	
Driving Piles		Foot	1,400	
Test Pile Metal Shells		Each	1	



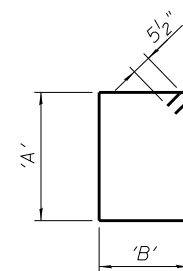
BAR h40(E)



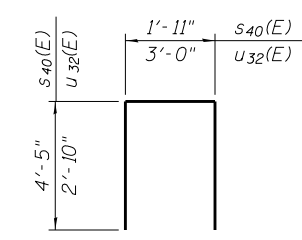
BAR n30(E)



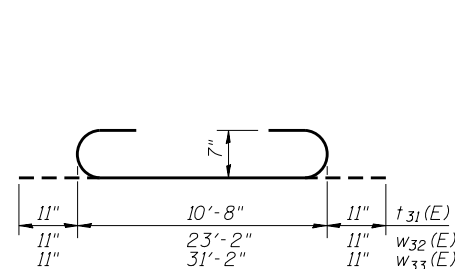
BARS p30(E) thru p32(E)



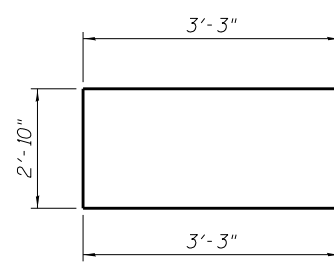
BARS s30(E) thru s39(E) & s41(E)



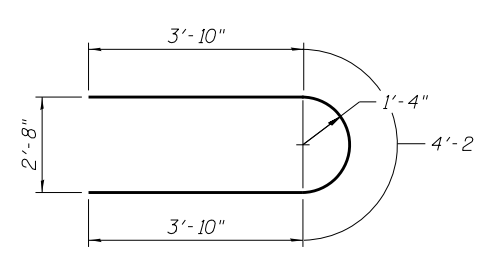
BARS s40(E) & u32(E)



BARS t31(E), w32(E) & w33(E)



BAR u30(E)



BAR u31(E)

A & B DIMENSIONS

Bar	A	B
s30(E)	2'-9"	1'-11"
s31(E)	2'-11"	1'-11"
s32(E)	3'-1"	1'-11"
s33(E)	3'-3"	1'-11"
s34(E)	3'-5"	1'-11"
s35(E)	3'-7"	1'-11"
s36(E)	3'-9"	1'-11"
s37(E)	3'-11"	1'-11"
s38(E)	4'-1"	1'-11"
s39(E)	4'-3"	1'-11"
s41(E)	5'-8"	3'-0"

BOWMAN, BARRETT & ASSOCIATES INC.
CONSULTING ENGINEERS
Chicago, Illinois
312.228.0100
www.bbainc.com



USER NAME =
DESIGNED - SF
CHECKED - BAK
PLOT SCALE =
DRAWN - MTR
PLOT DATE = 03/29/2013

DESIGNED - SF
CHECKED - BAK
DRAWN - MTR
CHECKED - SF

REVISED -
REVISED -
REVISED -
REVISED -

STATE OF ILLINOIS
DEPARTMENT OF TRANSPORTATION

PIER DETAILS II
STRUCTURE NO. 016-2470

SHEET NO. S-36 OF S-53 SHEETS

F.A.I. RTE.	SECTION	COUNTY	TOTAL SHEETS	SHEET NO.
94	2012-059-BR	COOK	631	411
CONTRACT NO. 60J12				

ILLINOIS FED. AID PROJECT