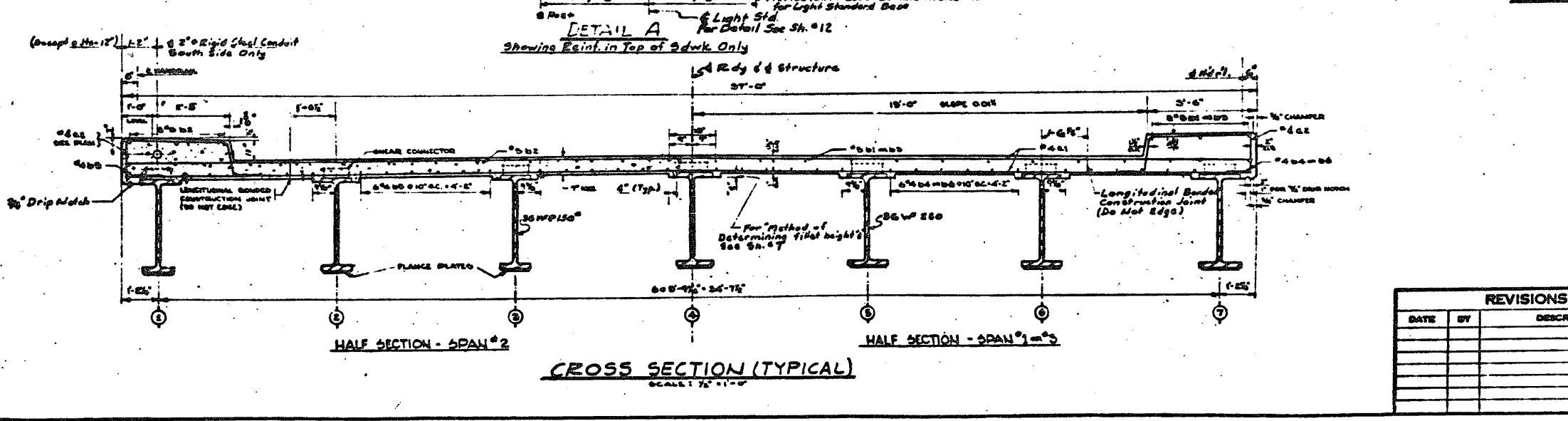


BILL OF MATERIAL

Reinforcement Bars	Lbs. 45,930
Class X Concrete	Cu. Yds 317.5
2" Rigid Steel Conduit	Lin. Ft. 260

NOTES
 For Details of Handrail, See Sl. # 11 & 12
 For Light Standard Details, See Sl. # 12
 For Bar List, See Sl. # 28
 For Sections B-D, D-D, & Corner Details, See Sl. # 5
 For Details of Expansion Devices at Piers & Abutments
 See Sl. # 9 & 10



REVISIONS

DATE	BY	DESCRIPTION

DEPARTMENT OF HIGHWAYS
 COOK COUNTY, ILLINOIS

DANIEL RYAN
 COUNTY BOARD OF COMMISSIONERS

WILLIAM J. MORTIMER
 SUPERVISOR OF HIGHWAYS

SUPERSTRUCTURE CONCRETE DETAILS
EAST BOUND STONY ISLAND CONNECTOR
 OVER
SOUTH ROUTE EXPRESSWAY

COMPUTED BY *[Signature]* PROJECT 90-5(68)113
 DRAWN BY *[Signature]* SCALE As Noted
 CHECKED BY *[Signature]* DATE 5/15/80
 APPROVED *[Signature]* DATE 5/15/80

DATE	BY	APPROVED	DATE	SCALE	NO.
90					

3-1-80 0 2-6-80 2-2-80

2/22/01 PM
 3/29/2013
 SA1072.05.CADD.S-Structure.dwg
 0162470.CADD Sheets\0162470-60J12-044-F102.dgn

BOWMAN, BARRETT & ASSOCIATES INC.
 CONSULTING ENGINEERS
 Chicago, Illinois
 312.228.0100
 www.bbainc.com

USER NAME =	DESIGNED -	REVISED -
PLOT SCALE =	CHECKED - BAK	REVISED -
PLOT DATE = 03/29/2013	DRAWN -	REVISED -
	CHECKED -	REVISED -

STATE OF ILLINOIS
 DEPARTMENT OF TRANSPORTATION

EXISTING PLANS (FOR INFORMATION ONLY)
 STRUCTURE NO. 016-2470
 SHEET NO. S-44 OF S-53 SHEETS

F.A.I. RTE.	SECTION	COUNTY	TOTAL SHEETS	SHEET NO.
94	2012-059-BR	COOK	631	419
CONTRACT NO. 60J12				
ILLINOIS FED. AID PROJECT				