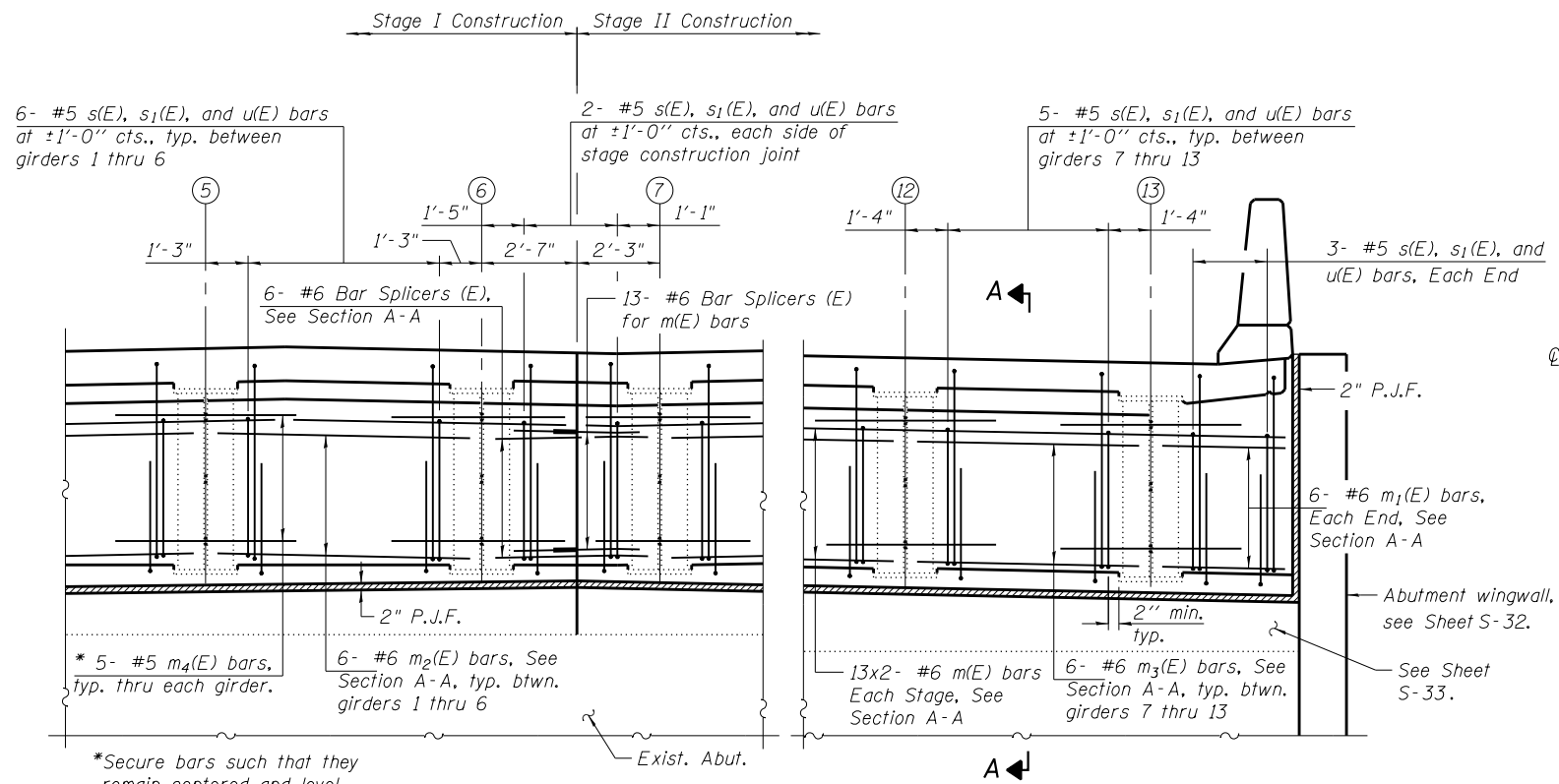


2/4/785 PM

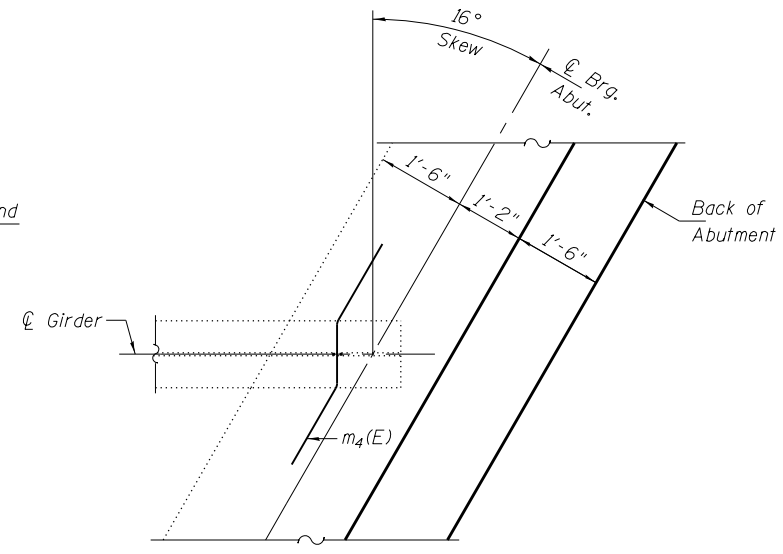
4/18/2013

S:\1072_05_CADD\Structure\1 SN 0162440.CADD Sheets\0162440-60J12-016-SD01.dgn



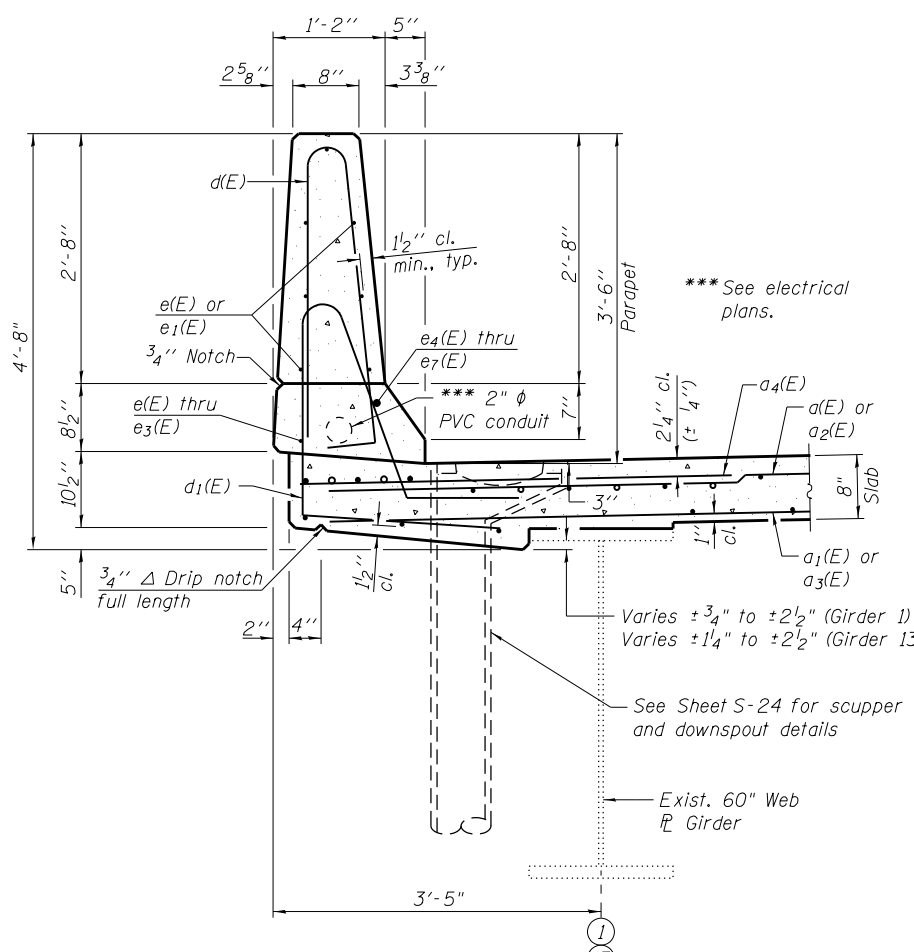
DIAPHRAGM ELEVATION AT ABUTMENT

*Secure bars such that they remain centered and level during pouring of the concrete.

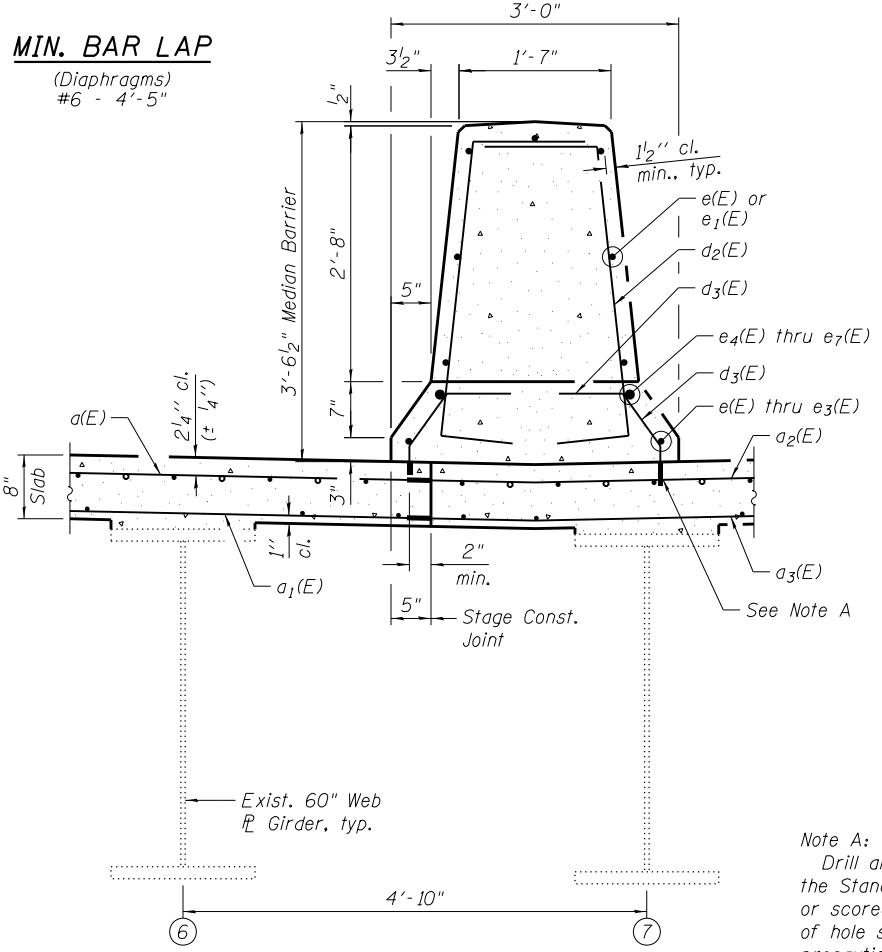


PARTIAL PLAN AT ABUTMENT
(Showing m4(E) bar through girder)

Notes:
Reinforcement bars in diaphragm are billed with superstructure on Sheet S-18.
Concrete in diaphragm is included with Concrete Superstructure on Sheet S-18.
For details of bars m4(E), s(E), s1(E) and u(E) see Sheet S-18.
The s(E), s1(E), and u(E) bars shall be placed parallel to the girders. Spacing for these bars shall be at right angles to the girders.
The approach slab seat shall have a constant slope determined from the control points shown in Table A.

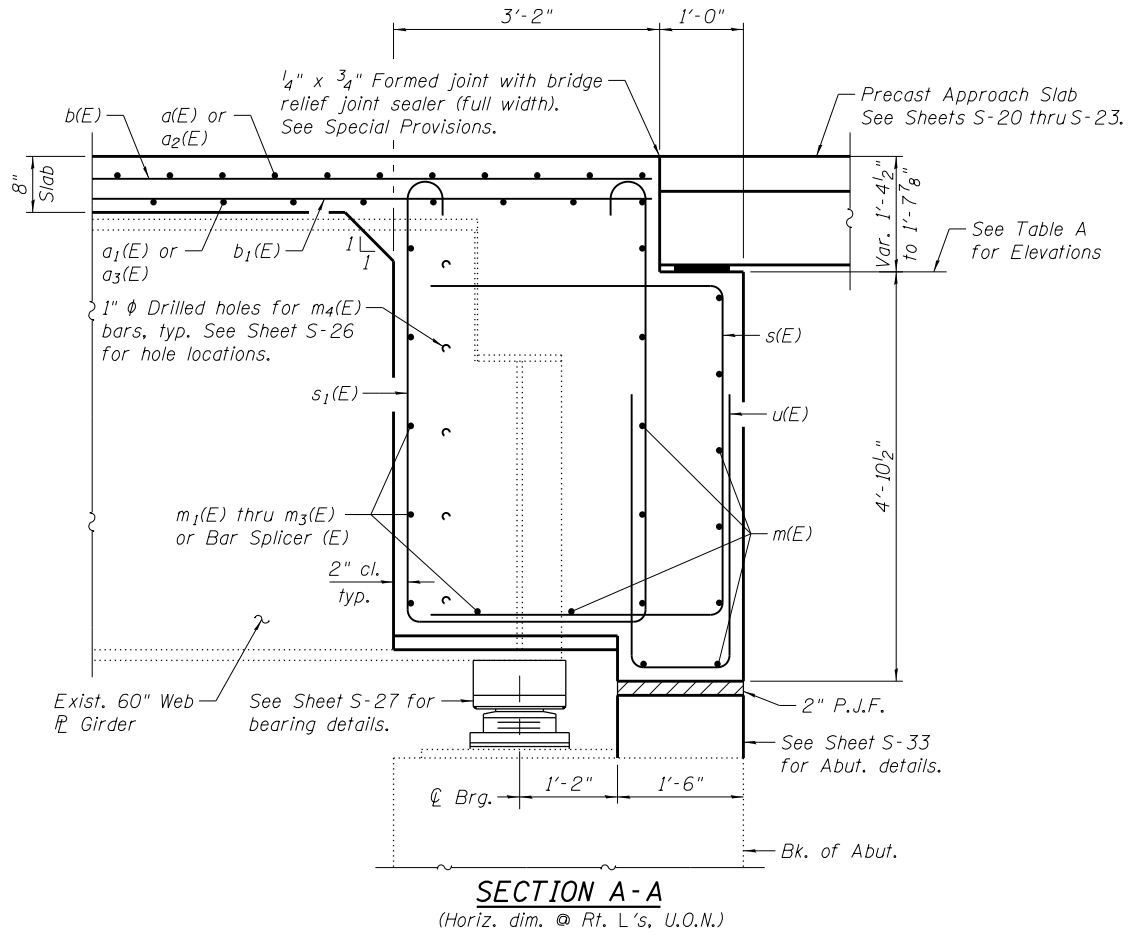


SECTION THRU PARAPET



SECTION THRU MEDIAN BARRIER

MIN. BAR LAP
(Diaphragms)
#6 - 4'-5"



SECTION A-A
(Horiz. dim. @ Rt. L's, U.O.N.)

Note A:
Drill and set #5 d3(E) bars according to Section 584 of the Standard Specifications. Drilled holes shall be roughened or scored per manufacturer's recommendations. Maximum depth of hole shall not exceed 6". Contractor shall take all necessary precautions to prevent drilled hole interference with deck reinforcement bars. Locate longitudinal bars to miss drilled locations. Locate drilled holes to miss transverse bars in deck.

TABLE A

| | APPR. SLAB SEAT ELEVATION | | |
|----------|---------------------------|------------------|-----------|
| | South End | Stage Const. Jt. | North End |
| W. Abut. | 618.42 | 618.87 | 618.24 |
| E. Abut. | 614.60 | 615.05 | 614.42 |

BOWMAN, BARRETT & ASSOCIATES INC.
CONSULTING ENGINEERS
Chicago, Illinois
312.228.0100
www.bbainc.com

USER NAME =
DESIGNED - TL
CHECKED - BAK
PLOT SCALE =
DRAWN - TL
PLOT DATE = 03/29/2013
CHECKED - JGC

REVISED -
REVISED -
REVISED -
REVISED -

STATE OF ILLINOIS
DEPARTMENT OF TRANSPORTATION

SUPERSTRUCTURE DETAILS I
STRUCTURE NO. 016-2440
SHEET NO. S-16 OF S-47 SHEETS

F.A.I. RT. SECTION COUNTY TOTAL SHEETS SHEET NO.
94 2012-059-BR COOK 631 444
CONTRACT NO. 60J12
ILLINOIS FED. AID PROJECT