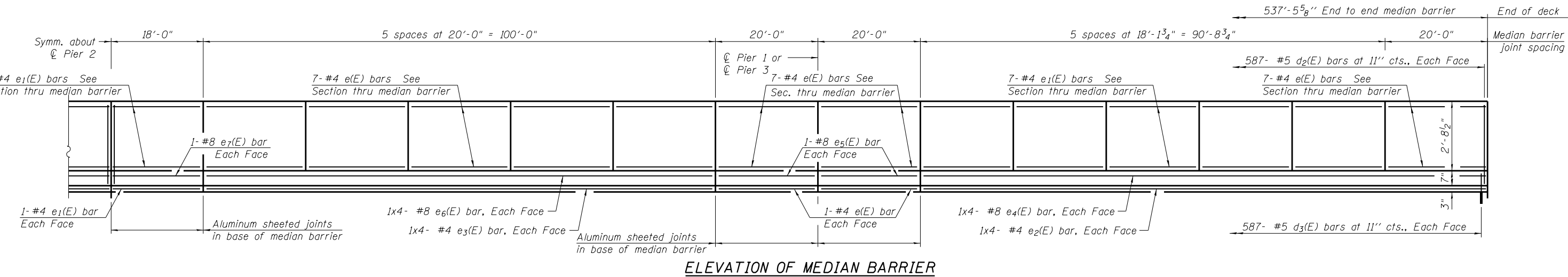
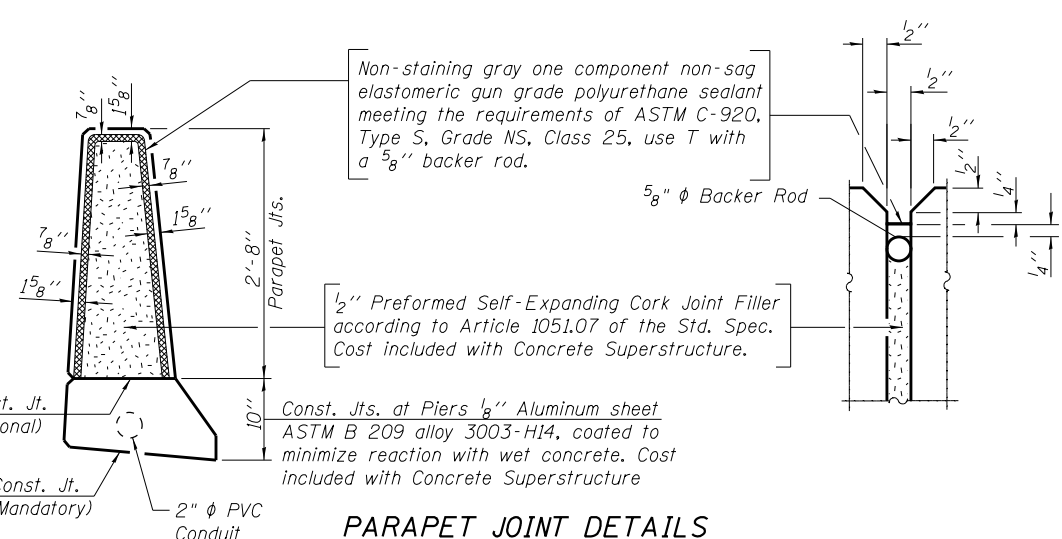


INSIDE ELEVATION OF PARAPETS

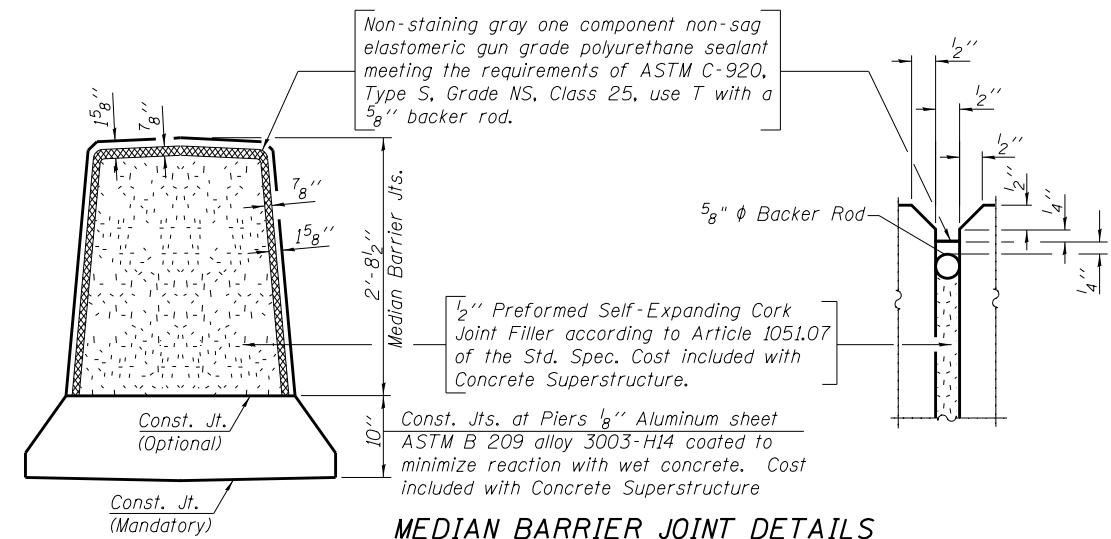


ELEVATION OF MEDIAN BARRIER
(Looking North)

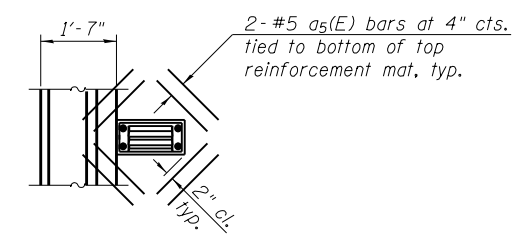
MINIMUM BAR LAP
(Parapets & Median Barrier)
#4 bar = 2'-0"
#8 bar = 5'-2"



PARAPET JOINT DETAILS



MEDIAN BARRIER JOINT DETAILS



SCUPPER DETAIL

Note:
Cut longitudinal reinforcement to clear drainage scuppers.

2/4/7/56 PM

4/18/2013

S:\1072_05_CADD\Structure\1 SN 0162440\CADD Sheets\0162440-60J12-017-SD02.dgn

BOWMAN, BARRETT & ASSOCIATES INC.
CONSULTING ENGINEERS
Chicago, Illinois
312.228.0100
www.bbainc.com

USER NAME =	DESIGNED - TL	REVISED -
PLOT SCALE =	CHECKED - BAK	REVISED -
PLOT DATE = 03/29/2013	DRAWN - TL	REVISED -
	CHECKED - JGC	REVISED -

STATE OF ILLINOIS
DEPARTMENT OF TRANSPORTATION

SUPERSTRUCTURE DETAILS II
STRUCTURE NO. 016-2440
SHEET NO. S-17 OF S-47 SHEETS

F.A.I. RTE. 94	SECTION 2012-059-BR	COUNTY COOK	TOTAL SHEETS 631	SHEET NO. 445
CONTRACT NO. 60J12				
ILLINOIS FED. AID PROJECT				