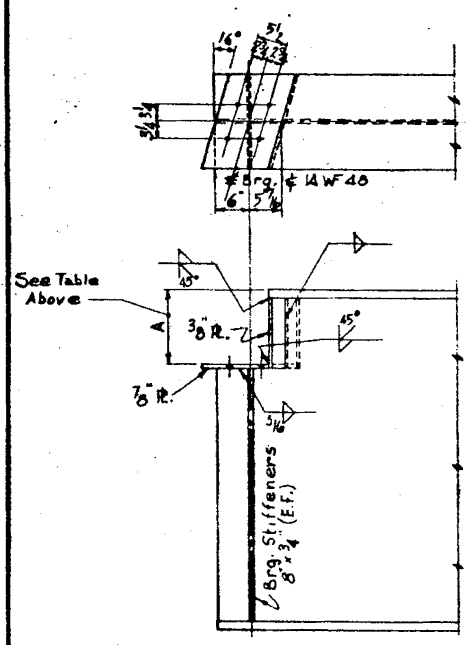
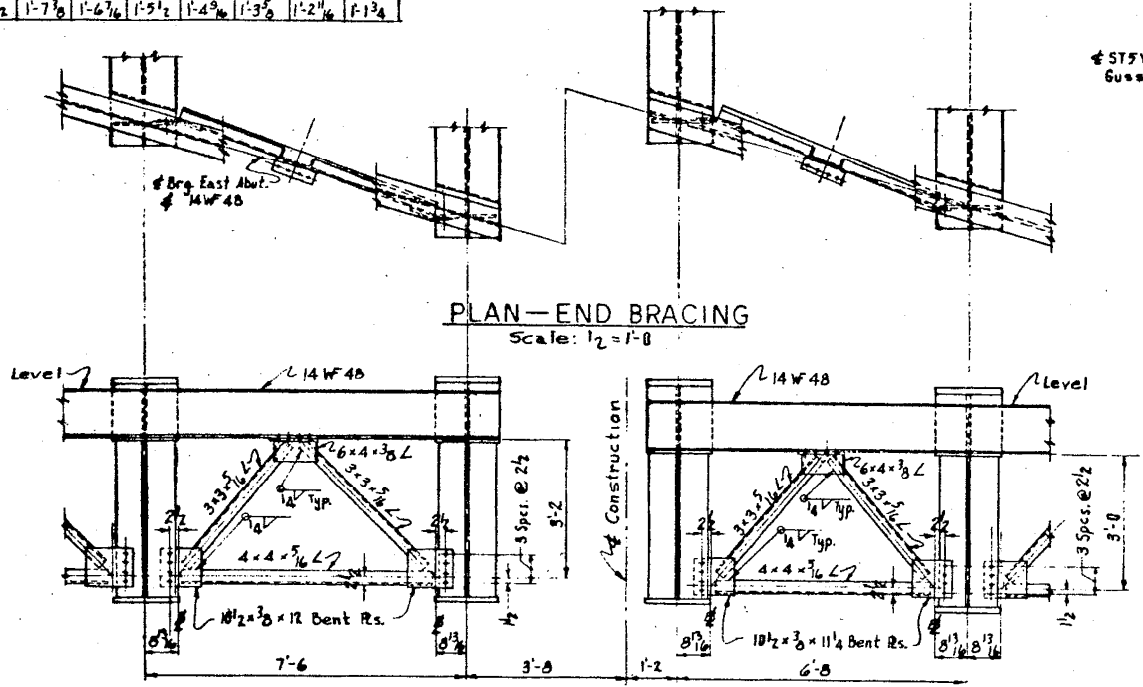


Girder No.	1	2	3	4	5	6	7	8	9	10	11	12	13
"A"	1'-1 1/2"	1'-2 1/2"	1'-3 1/4"	1'-4"	1'-4 3/4"	1'-5 1/2"	1'-7"	1'-6 3/4"	1'-5 1/2"	1'-4 3/4"	1'-3 3/8"	1'-2 1/4"	1'-1 3/4"

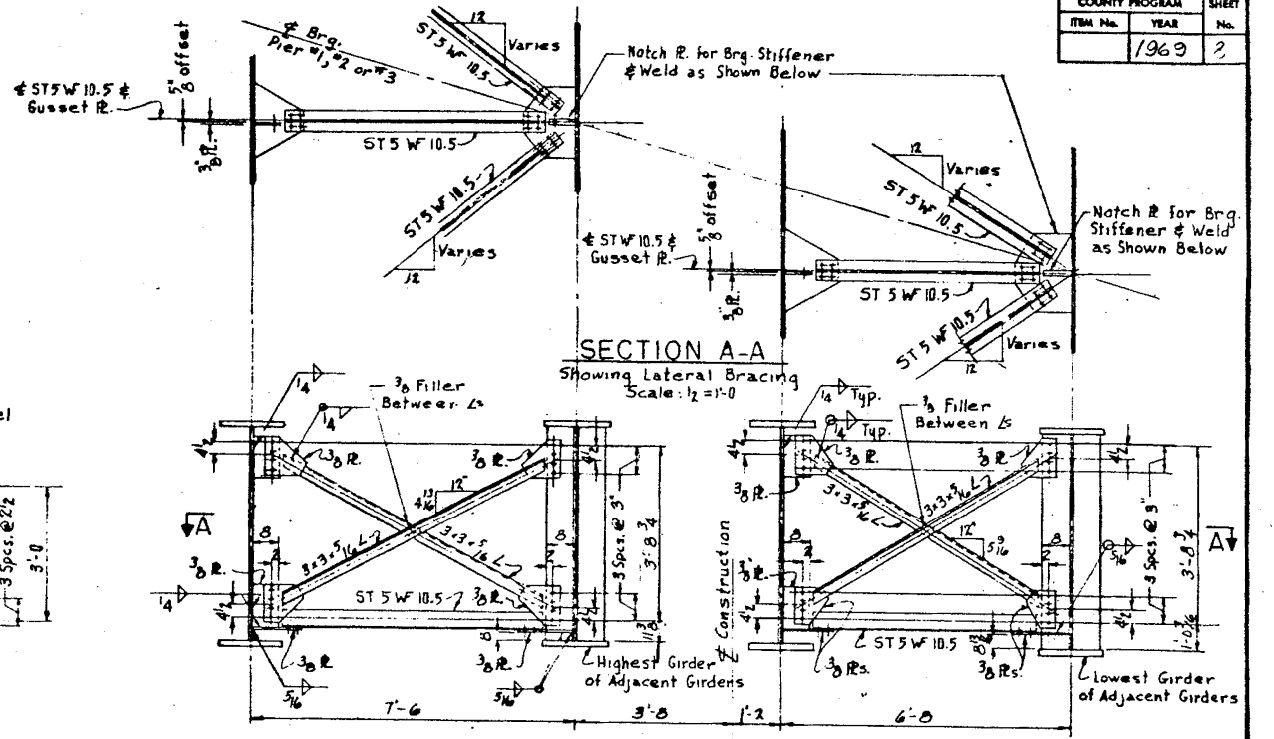
COUNTY PROGRAM	YEAR	SHEET No.
ITEM No.	1969	2



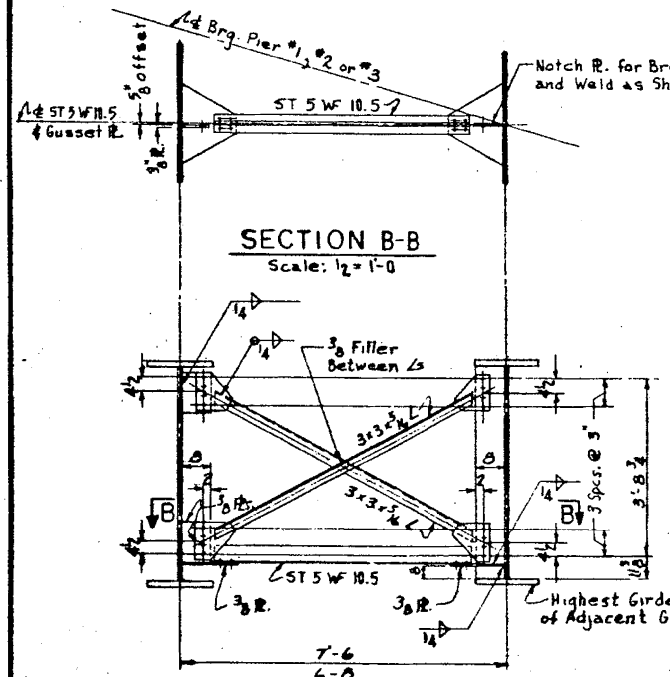
GIRDER DETAIL AT WEST ABUT.
Detail @ East Abut. Same By 180° Rotation
Scale: 3/4"=1'-0"



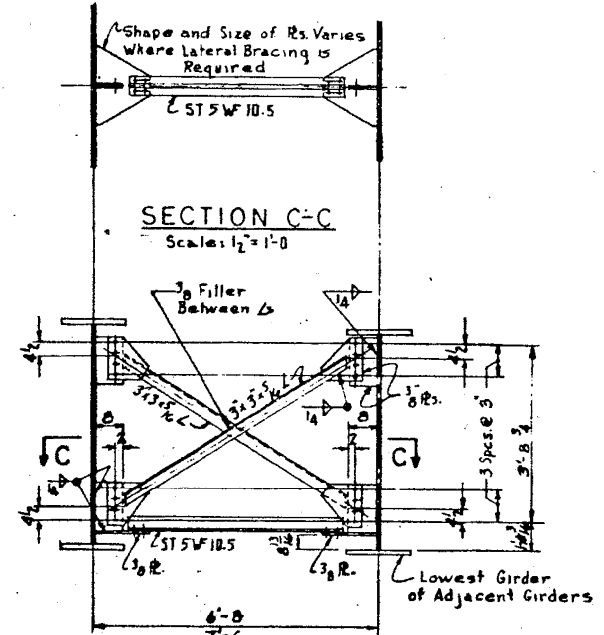
ELEVATION-END BRACING
End Bracing @ West Abut. Similar
Scale: 1/2"=1'-0"



ELEVATION-PIER CROSS FRAMING WITH LATERAL BRACING
Scale: 1/2"=1'-0"



ELEVATION-PIER CROSS FRAMING WITHOUT LATERAL BRACING
Scale: 1/2"=1'-0"



ELEVATION-INTERMEDIATE CROSS FRAMING
Scale: 1/2"=1'-0"

BILL OF MATERIAL	
* Structural Steel	LUMP SUM

* Calculated weights of structural steel including quantities from sheets 7, 8, 9, 10, 11, 26 and 27
2,359,437 Lbs.

DEPARTMENT OF HIGHWAYS
COOK COUNTY, ILLINOIS
GEORGE W. DUNNE
THOMAS C. POTTS
STRUCTURAL STEEL DETAILS
STONY ISLAND EXP. CONNECTOR
TO F.A.I. 94 OVER
CHICAGO ROCK ISLAND & PACIFIC R.R.

REVISIONS		
DATE	BY	DESCRIPTION
10-6-61	C.M.C.	Revised Clearance for Welding of Lateral Bracing R's.
5-7-70	L.S.	Structural Steel quantity changed to Lump Sum Note added.

COMPUTED	PROJECT	EBU-EBUG-246 (64)
CHECKED	SUBMITTED	3-10-69
DRAWN	DATE	3-10-69
CHECKED	SCALE	AS SHOWN
EXAMINED	DATE	3-24-69
DESIGNED	DATE	1-14-69
DRAWN	DATE	1-14-69
CHECKED	DATE	1-14-69

3/29/2013 3:29:09 PM SA:\1072_05_CADD\Structural\SN 0162440\CADD Sheets\0162440-60J12-041-FY05.dgn

BOWMAN, BARRETT & ASSOCIATES INC.
CONSULTING ENGINEERS
Chicago, Illinois
312.228.0100
www.bbainc.com

USER NAME	DESIGNED	REVISED
PLOT SCALE	CHECKED - BAK	REVISED
PLOT DATE = 03/29/2013	DRAWN	REVISED
	CHECKED	REVISED

STATE OF ILLINOIS
DEPARTMENT OF TRANSPORTATION

EXISTING PLANS (FOR INFORMATION ONLY)
STRUCTURE NO. 016-2440
SHEET NO. S-42 OF S-47 SHEETS

F.A.I. RTE.	SECTION	COUNTY	TOTAL SHEETS	SHEET NO.
94	2012-059-BR	COOK	631	470
CONTRACT NO. 60J12				
ILLINOIS FED. AID PROJECT				