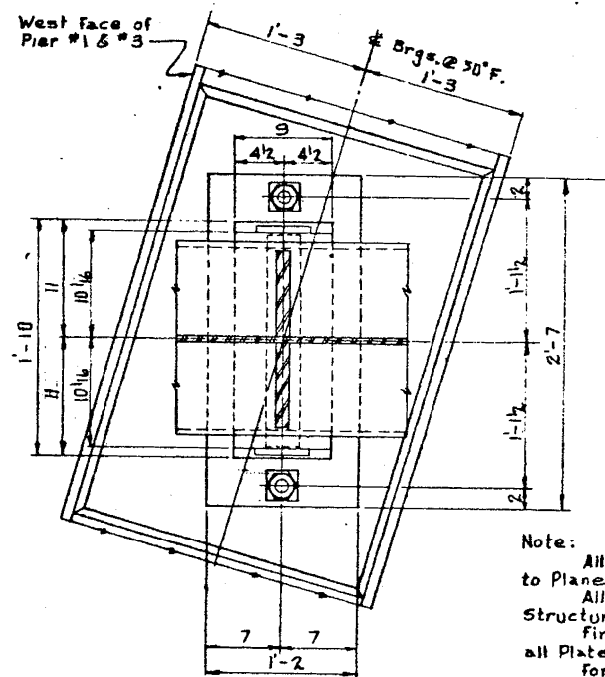
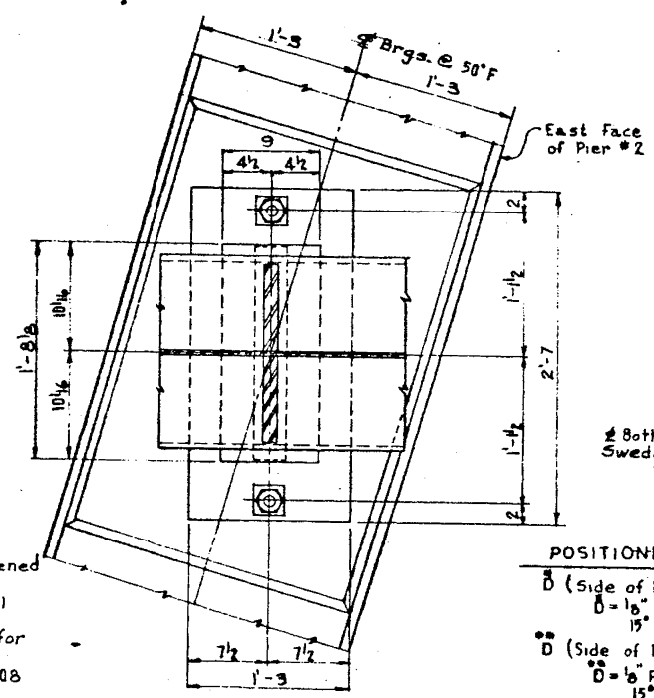


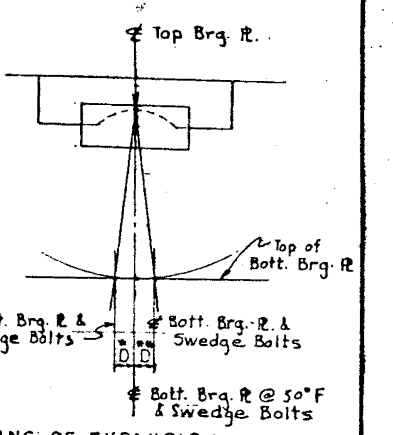
PLAN
Scale: 1/2" = 1'-0"



PLAN
Scale: 1/2" = 1'-0"

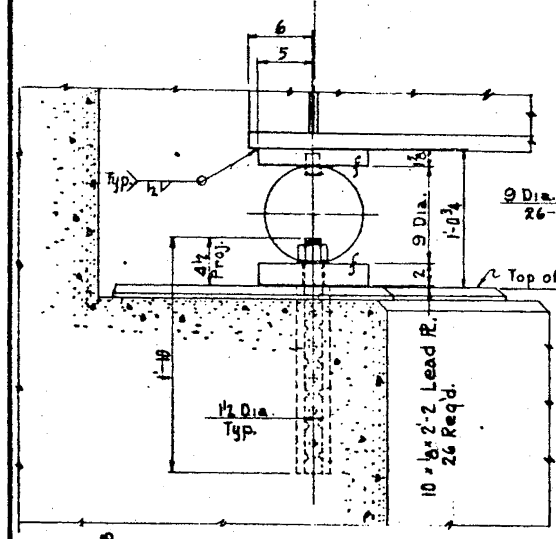


PLAN
Scale: 1/2" = 1'-0"

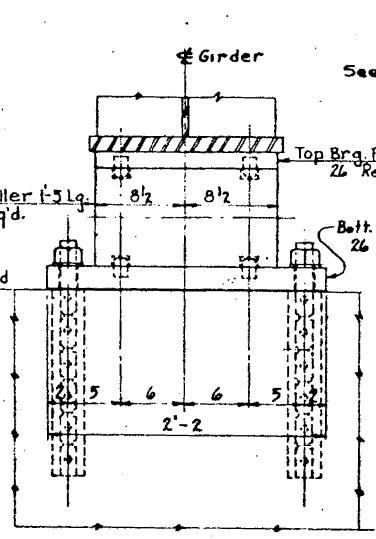


POSITIONING OF EXPANSION ROCKERS
 ♂ (Side of Brg. Away from Fixed Brg.)
 $\Delta = 1/8"$ Per Each 100' of Expansion for Every 15° Fall Below Normal Temp. of 50°F
 ♀ (Side of Brg. Toward Fixed Brg.)
 $\Delta = 1/8"$ Per Each 100' of Expansion for Every 15° Rise Above Normal Temp. of 50°F

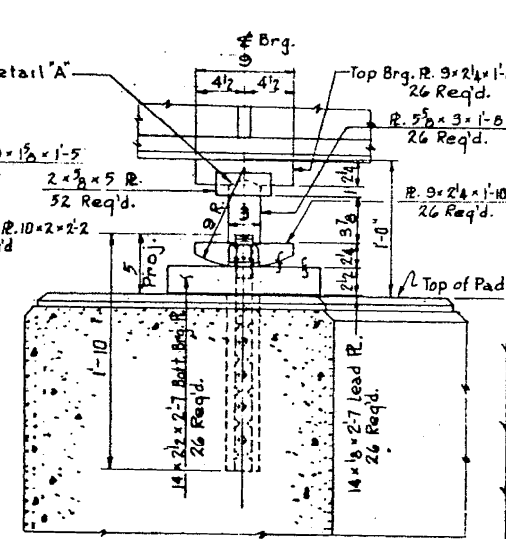
Note:
 All Bearing Plates shall be Straightened to Plane Surfaces.
 All Bearings to be Made from A-441 Structural Steel Unless Noted.
 Finished Dimensions are Shown for all Plates.
 for 9" Dia. Rollers use A.S.T.M. A-108 Grade 1016 to 1030 Inc.



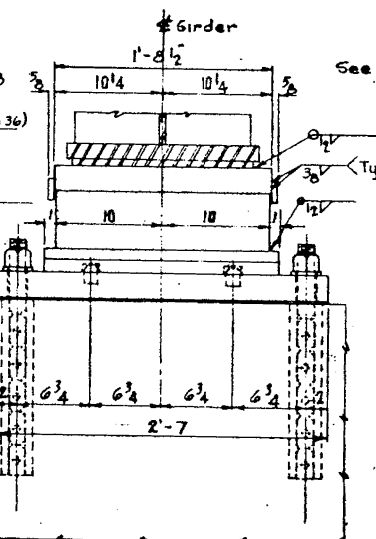
ELEVATION
Scale: 1/2" = 1'-0"



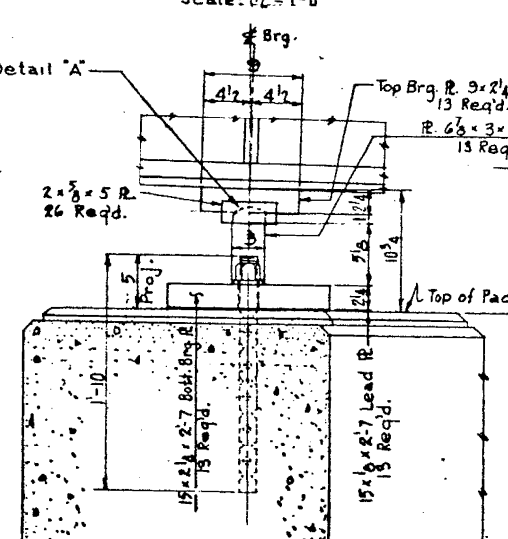
ELEVATION
Scale: 1/2" = 1'-0"



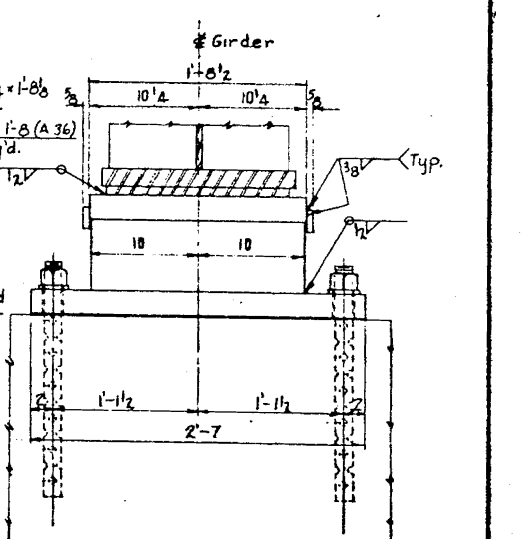
ELEVATION
Scale: 1/2" = 1'-0"



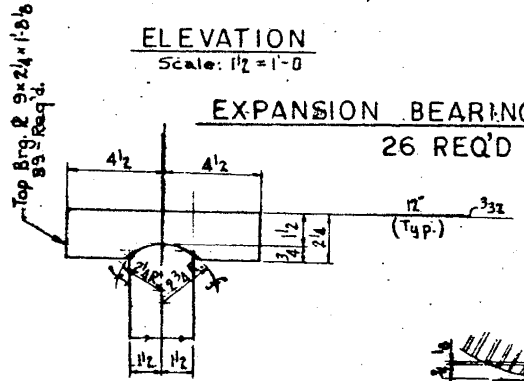
ELEVATION
Scale: 1/2" = 1'-0"



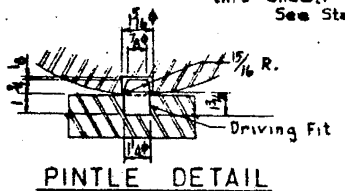
ELEVATION
Scale: 1/2" = 1'-0"



ELEVATION
Scale: 1/2" = 1'-0"



DETAIL A
Scale: 3" = 1'-0"



PINTLE DETAIL

Note:
 Determine Location of Swedge Bolts for Exp. Brgs. and Drill 3" Dia. Holes Prior to Erection of Girders and Bottom Brg. Plates.
 Swedge Bolts to be Grouted in Place after Erection of Girder as Shown in Detail at Upper Right Hand Corner of this Sheet.
 See Standard Specifications Section 507.08

Note:
 Swedge Bolts for Fixed Brg. to be Cast in Place. All Swedge Bolts are 1 1/2" Dia. All Washers 2 1/2 x 2 1/2 x 3/8

Note:
 Estimated Weights of Bearings (Rockers, Bolsters, Bearing Plates, Lead Plates, Anchor Bolts & Washers) are to be included in the Contract Bid Price Per Lump Sum of Furnishing and Erecting Structural Steel, this furnishing and Erecting Structural Steel, this

REVISIONS		
DATE	BY	DESCRIPTION
1-22-70	C.M.C.	Changed Setting of Swedge Bolts at Exp. Brgs. to Read Positioning of Exp. Rockers
5-8-70	L.S.	Unit price of str. steel per pound changed to Lump Sum
6-26-70	D.S.	Changed Rocker Assembly head to Piers 1 & 2 From 1-0 1/2 to 1-0

DEPARTMENT OF HIGHWAYS
 COOK COUNTY, ILLINOIS
 GEORGE W. DUNNE
 PRESIDENT BOARD OF COMMISSIONERS
 THOMAS G. COTS
 SUPERVISOR OF HIGHWAYS

BEARING DETAILS
 STONY ISLAND EXP. CONNECTOR
 TO F.A. 1.94 OVER
 CHICAGO ROCK ISLAND & PACIFIC R.R.

PROJECT: EBU-EBUG-246 (64)
 SUBMITTED: 3-10-69
 DRAWN: C.M. CLARK
 CHECKED: J.P. [Signature]

EXAMINED: 3-24-69
 [Signature]
 CHIEF ENGINEER OF DESIGN

SECTION NUMBER	Sheet No.	Total Sheets	Drawing No.
174A-01012 C.F.	9	41	SI 101

3/29/2013 3:08:16 PM SA:\072_05_CADD\Structure\1\SN_0162440\CADD_Sheets\0162440-60J12-042-FY05.dgn

BOWMAN, BARRETT & ASSOCIATES INC.
 CONSULTING ENGINEERS
 Chicago, Illinois
 312.228.0100
 www.bbainc.com

USER NAME =	DESIGNED -	REVISED -
PLOT SCALE =	CHECKED - BAK	REVISED -
PLOT DATE = 03/29/2013	DRAWN -	REVISED -
	CHECKED -	REVISED -

STATE OF ILLINOIS
 DEPARTMENT OF TRANSPORTATION

EXISTING PLANS (FOR INFORMATION ONLY)
 STRUCTURE NO. 016-2440
 SHEET NO. S-43 OF S-47 SHEETS

F.A.I. RTE.	SECTION	COUNTY	TOTAL SHEETS	SHEET NO.
94	2012-059-BR	COOK	631	471
CONTRACT NO. 60J12				
ILLINOIS FED. AID PROJECT				