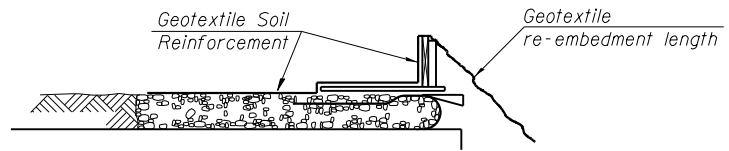
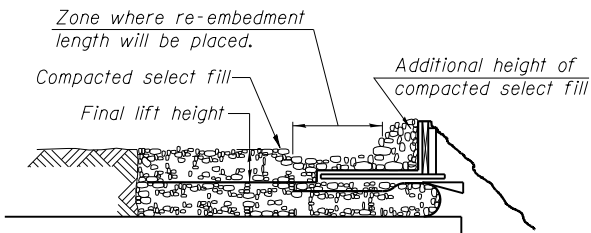


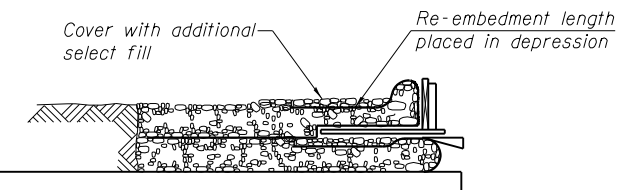
1. Place form brace system on completed reinforcement level; back from the finished fabric face a distance of 1'-0" Min. geotextile reinforcement spacing.



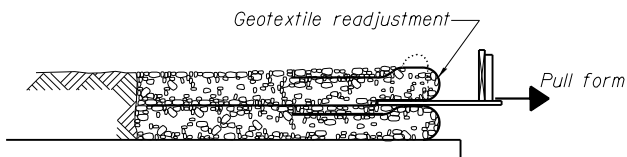
2. Position fabric so that the required geotextile re-embedment length extends over the top of the form brace and the design reinforcement width is placed with no slack against the previous level.



3. Compact select fill material in lifts to final lift height, create (+3") depression in zone where re-embedment length will be located and place additional height of compacted select fill against form brace.



4. Fold geotextile re-embedment length back over form brace into zone where depression was made in select fill and place additional select fill (+3") to embed geotextile and bring to final lift height.

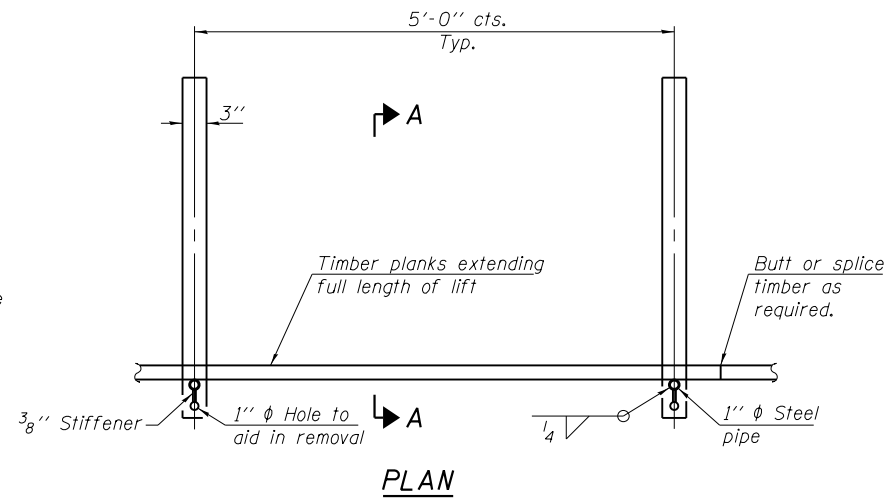


5. Pull form brace outward allowing geotextile face to slightly readjust to form tight round face level with plan reinforcement spacing.

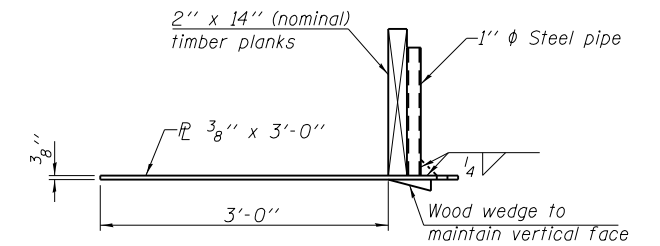
TEMPORARY GEOTEXTILE WALL CONSTRUCTION SEQUENCE

NOTE :

The geotextile soil reinforcement shall have a minimum allowable tensile strength T_{min} of 42 lb./in. as determined by the procedure described in the Special Provision. The computations supporting the determination of T_{min} shall be submitted to the Engineer for approval.



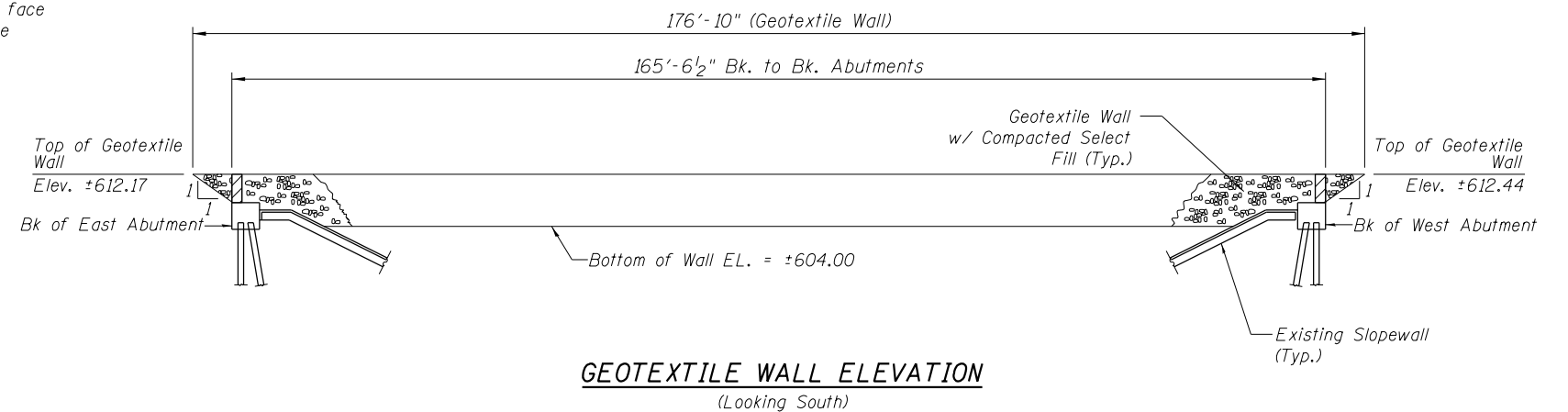
TEMPORARY GEOTEXTILE FORM BRACE DETAIL



SECTION A-A

NOTE :

This is a suggested detail, the Contractor is responsible for the design of the form brace system to be used.

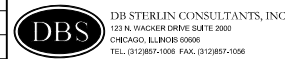


GEOTEXTILE WALL ELEVATION (Looking South)

BILL OF MATERIAL

ITEM	UNIT	QUANTITY
Geotextile Retaining Wall	Sq Ft	1,769

USER NAME =	DESIGNED - GFP/ GMK	REVISED -
PLOT SCALE =	DRAWN - GFP	REVISED -
PLOT DATE =	CHECKED - GMK	REVISED -
FILE NAME =	DATE - 03/29/13	REVISED -



STATE OF ILLINOIS DEPARTMENT OF TRANSPORTATION

GEOTEXTILE RETAINING WALL SN 016-2439

SHEET NO. 56 OF 518 SHEETS

F.A.I. RTE. =	SECTION =	COUNTY =	TOTAL SHEETS =	SHEET NO. =
94	2012-059-BR	COOK	631	481
CONTRACT NO. 60J12				
FED. ROAD DIST. NO. 1 ILLINOIS FED. AID PROJECT				