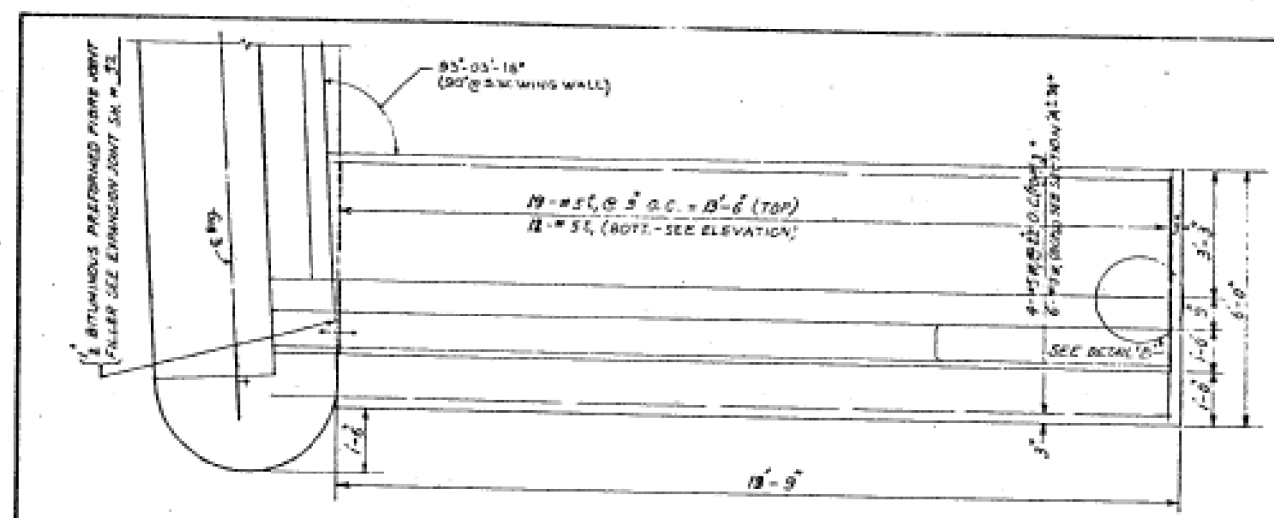
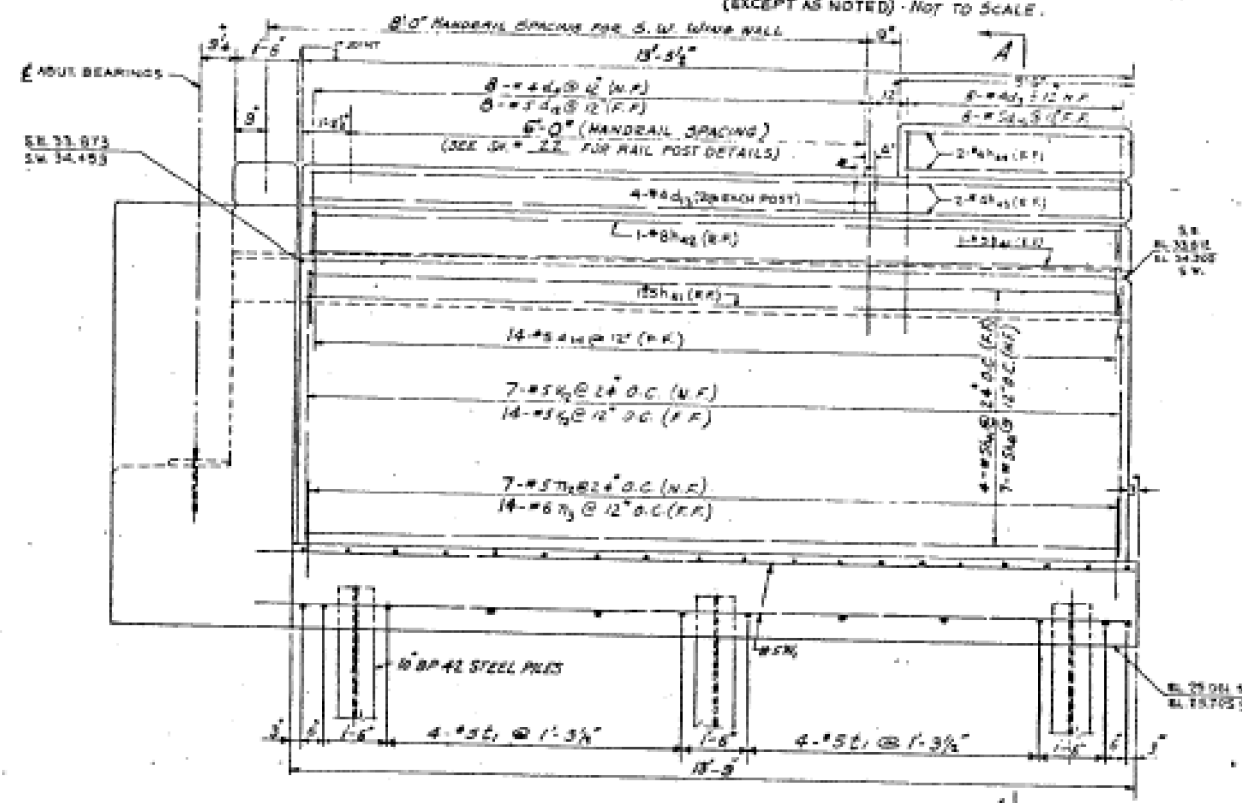


COUNTY PROGRAM	DATE	SHEET
FEA No.	YEAR	No.
		17

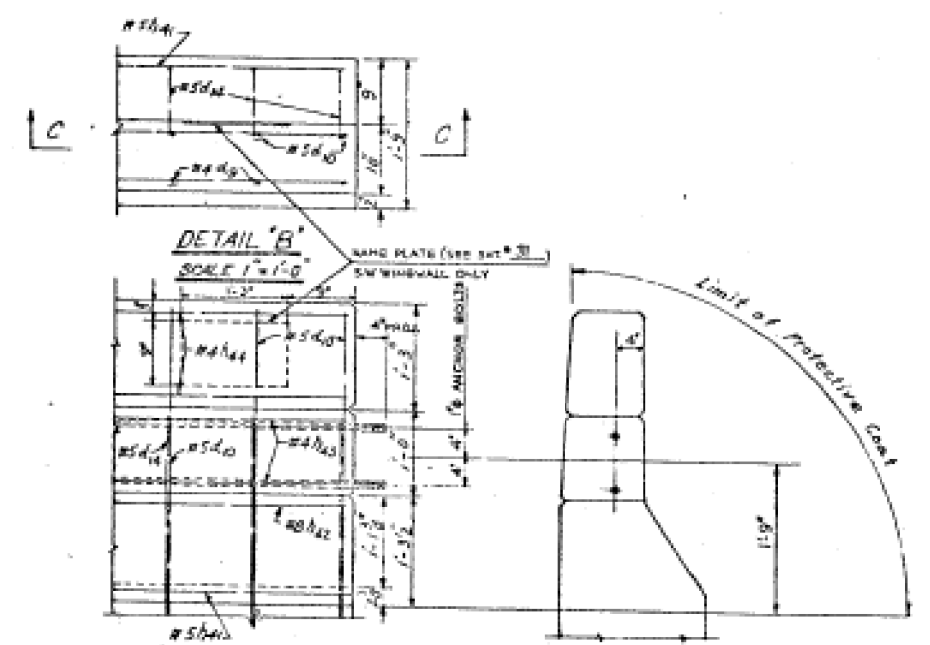


**SOUTH EAST WING WALL - FOOTING PLAN SHOWN  
SOUTH WEST WING WALL - FOOTING PLAN OPPOSITE HAND**  
(EXCEPT AS NOTED) - NOT TO SCALE.

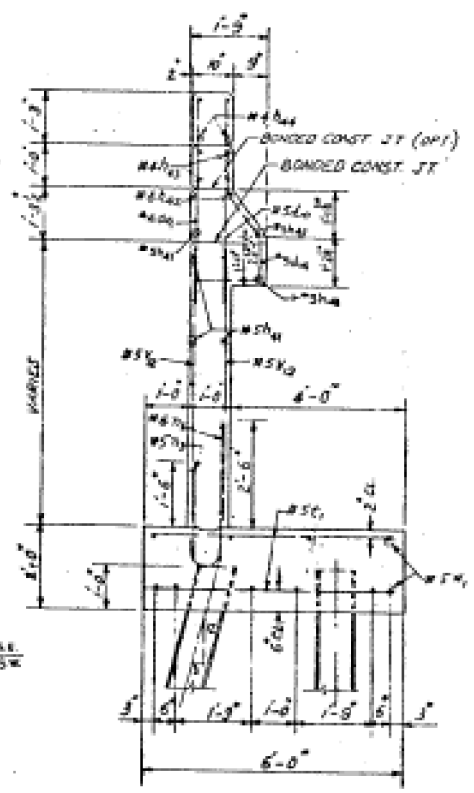
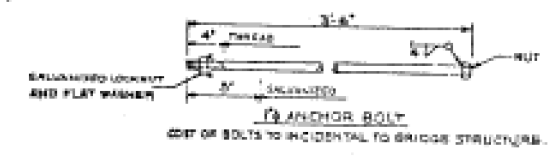


**SOUTH EAST WING WALL - ELEVATION SHOWN  
SOUTH WEST WING WALL - ELEVATION OPPOSITE HAND**  
NOT TO SCALE

**NOTE:**  
FOR WEST WING WALL FOOTING REINFORCEMENT  
SEE BAR LIST FOR WEST ABUTMENT ON SHIT # 24



**SECTION C-C**  
SCALE 1/2" = 1'-0"



**SECTION A-A**  
SCALE 1/2" = 1'-0"

**NOTES:-**  
SEE SHITS # 15 & 16 FOR ABUTMENT DETAILS AND SPACING OF PILES  
FOR DETAILS OF 10SP42 STEEL PILES SEE SHEET # 22  
CLASS "X" CONCRETE FOR FOOTING AND FOOTING REINFORCEMENT LISTED WITH ABUTMENTS, SHEET # 13 AND # 14.  
QUANTITIES INCLUDED IN BILL OF MATERIAL ON SHEET # 18.  
SEE SHEET # 15 FOR PROTECTIVE COAT NOTES.

**DEPARTMENT OF HIGHWAYS**  
COOK COUNTY, ILLINOIS

**S. W. & S. E. WING WALL DETAILS  
STONY ISLAND CONNECTOR  
TO F. A. I. 94  
OVER ACCESS ROAD TO FRONTAGE ROAD**

PROJECT: EBV-299.1A.1  
SHEET NO. 17

REVISIONS		
DATE	BY	DESCRIPTION
7-11-94	E.H.C.	Dimension changes due to shortening of wing walls as requested by State.

USER NAME =	DESIGNED - GFP/GMK	REVISED -
PLOT SCALE =	DRAWN - GFP	REVISED -
PLOT DATE =	CHECKED - GMK	REVISED -
FILE NAME =	DATE - 03/29/13	REVISED -



**STATE OF ILLINOIS  
DEPARTMENT OF TRANSPORTATION**

**EXISTING PLAN (FOR INFORMATION ONLY)**  
SN 016-2439

SHEET NO. S15 OF S18 SHEETS

F.A.I. RTE.	SECTION	COUNTY	TOTAL SHEETS	SHEET NO.
94	2012-059-BR	COOK	631	490
CONTRACT NO. 60J12				
FED. ROAD DIST. NO. 1 (ILLINOIS) FED. AID PROJECT				