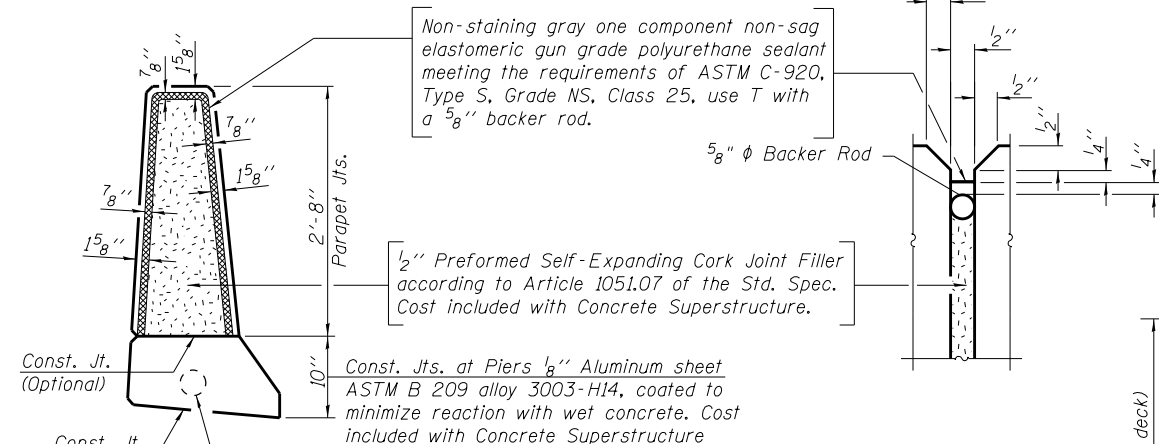
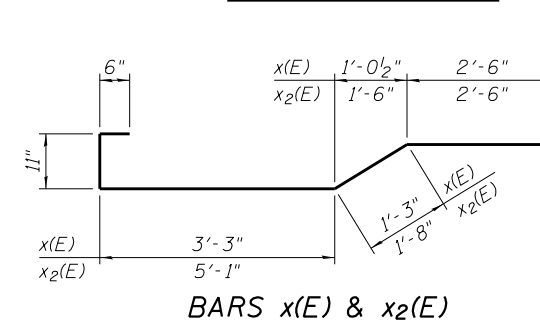
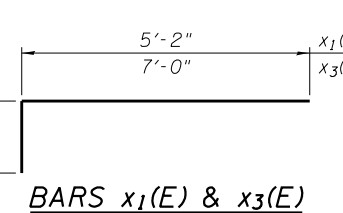
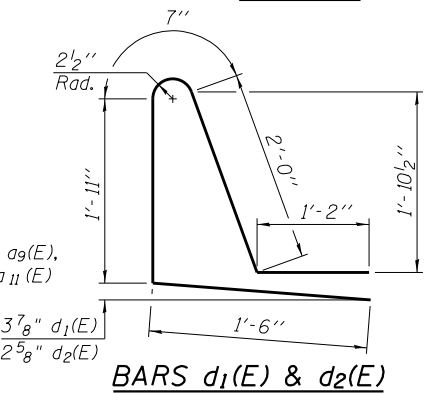
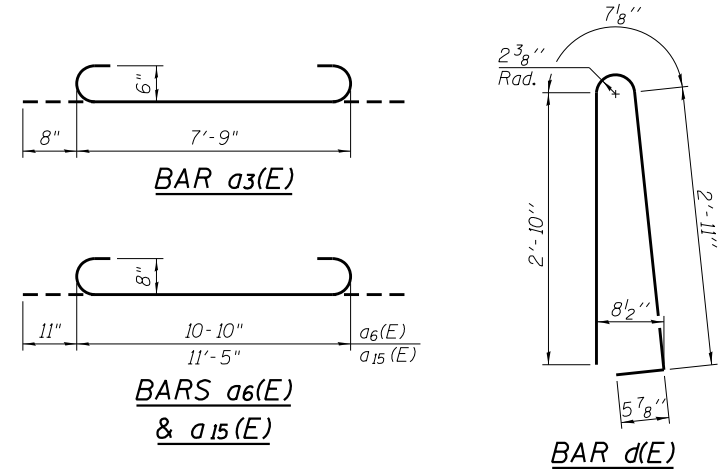


INSIDE ELEVATION OF PARAPETS

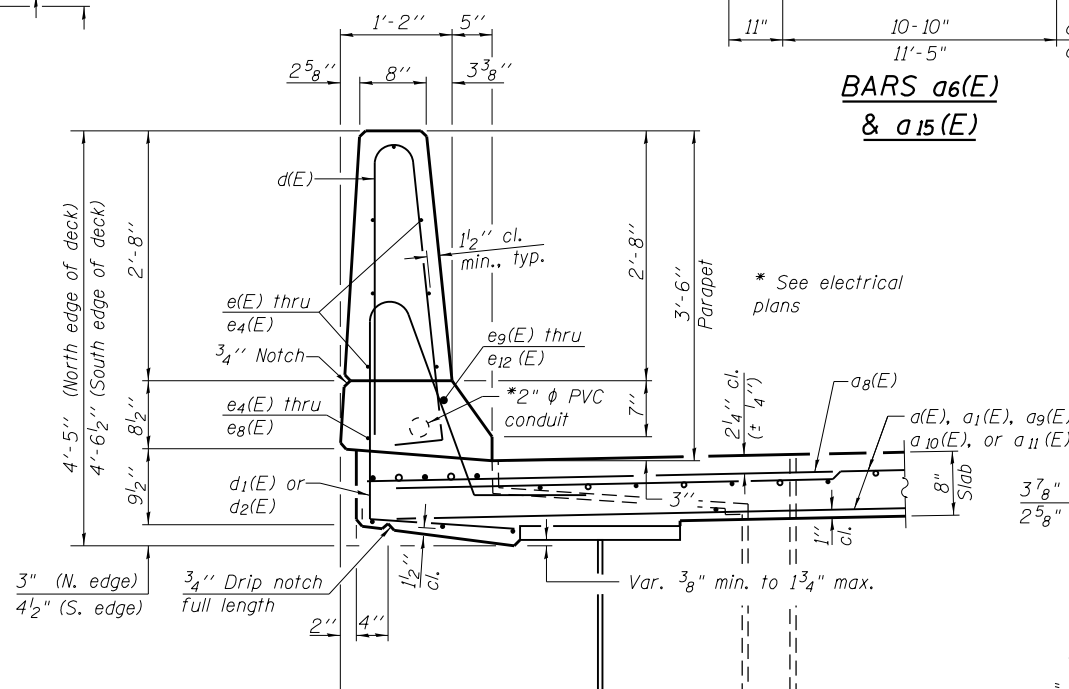
**SUPERSTRUCTURE
BILL OF MATERIAL**

Bar	No.	Size	Length	Shape
a(E)	669	#5	16'-1"	—
a1(E)	52	#5	17'-5"	—
a2(E)	2	#6	19'-1"	—
a3(E)	8	#6	9'-1"	—
a4(E)	4	#6	22'-9"	—
a5(E)	2	#8	26'-10"	—
a6(E)	4	#8	12'-8"	—
a7(E)	4	#8	31'-10"	—
a8(E)	837	#6	6'-6"	—
a9(E)	672	#5	17'-1"	—
a10(E)	22	#5	18'-1"	—
a11(E)	39	#5	18'-8"	—
a12(E)	2	#6	20'-10"	—
a13(E)	4	#6	24'-7"	—
a14(E)	2	#8	30'-2"	—
a15(E)	4	#8	13'-3"	—
a16(E)	4	#8	35'-8"	—
a17(E)	8	#5	2'-0"	—
b(E)	180	#5	28'-2"	—
b1(E)	99	#6	30'-0"	—
b2(E)	143	#5	25'-11"	—
b3(E)	190	#5	29'-1"	—
b4(E)	154	#5	26'-8"	—
d(E)	555	#5	6'-10"	—
d1(E)	269	#5	7'-2"	—
d2(E)	286	#5	7'-2"	—
d3(E)	3	#6	5'-1"	—
d4(E)	6	#6	8'-11"	—
e(E)	42	#4	15'-3"	—
e1(E)	49	#4	15'-7"	—
e2(E)	42	#4	16'-1"	—
e3(E)	49	#4	17'-0"	—
e4(E)	32	#4	19'-8"	—
e5(E)	4	#4	24'-11"	—
e6(E)	5	#4	23'-11"	—
e7(E)	4	#4	26'-2"	—
e8(E)	5	#4	25'-11"	—
e9(E)	4	#8	27'-3"	—
e10(E)	4	#8	19'-8"	—
e11(E)	5	#8	26'-5"	—
e12(E)	9	#8	28'-6"	—
x(E)	21	#5	8'-5"	—
x1(E)	29	#5	5'-9"	—
x2(E)	21	#5	10'-8"	—
x3(E)	29	#5	7'-7"	—
Reinforcement Bars, Epoxy Coated	Pound		72,220	
Concrete Superstructure	Cu. Yds.		323.2	
Bridge Deck Grooving	Sq. Yds.		814	
Protective Coat	Sq. Yds.		1113	

MINIMUM BAR LAP
(Parapet)
#4 bar = 2'-0"
#8 bar = 5'-2"

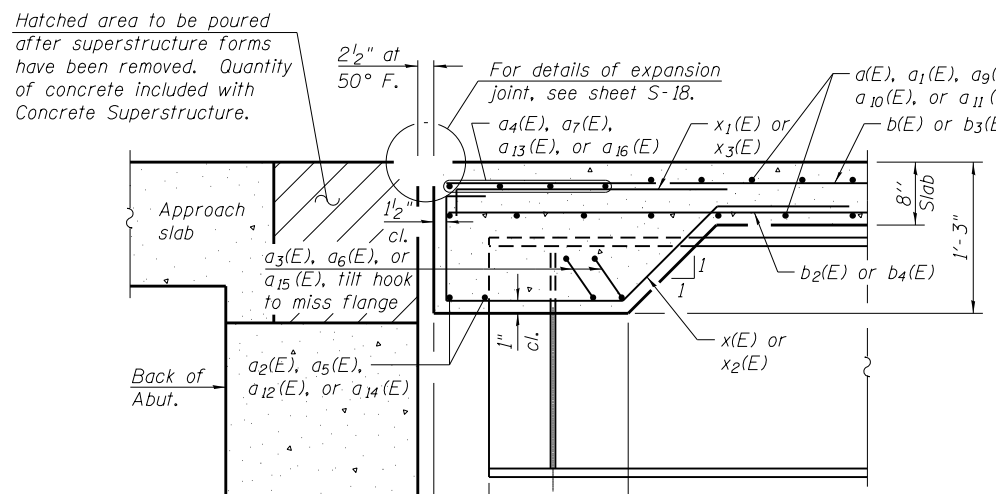


PARAPET JOINT DETAILS



Notes:
Drainage scupper shall be located clear of all cross frames.

See Sheets S-19 and S-20 for scupper and drainage system details



SECTION A-A

	West end of deck		East end of deck	
	"A"	"B"	"A"	"B"
Girder 1	1'-6 1/8"	3'-5"	2'-6 1/4"	5'-2 3/4"
Girder 2	1'-5 7/8"	3'-4 3/4"	2'-5 3/8"	5'-1 1/2"
Girder 3	1'-5 3/4"	3'-4 1/2"	2'-4 3/4"	5'-0 3/8"
Girder 4	1'-5 5/8"	3'-4 1/4"	2'-4"	4'-11 1/4"
Girder 5	1'-5 3/8"	3'-4"	2'-3 3/8"	4'-10 1/4"
Girder 6	1'-5 1/4"	3'-3 3/4"	2'-2 7/8"	4'-9 1/4"

3/3/2014 PM

4/30/2013

S:\1072_05_CADD\Structure\1-SN_0162471\CADD_Sheets\0162471-60112-013-5002.dgn

BOWMAN, BARRETT & ASSOCIATES INC.
CONSULTING ENGINEERS
Chicago, Illinois
312.228.0100
www.bbainc.com

USER NAME =	DESIGNED - TL	REVISOR -
PLOT SCALE =	CHECKED - BAK	REVISION -
PLOT DATE = 03/29/2013	DRAWN - TL	REVISION -
	CHECKED - BAK	REVISION -

STATE OF ILLINOIS
DEPARTMENT OF TRANSPORTATION

SUPERSTRUCTURE DETAILS II
STRUCTURE NO. 016-2471

SHEET NO. S-13 OF S-63 SHEETS

F.A.I. RTE.	SECTION	COUNTY	TOTAL SHEETS	SHEET NO.
94	2012-059-BR	COOK	631	506
CONTRACT NO. 60J12				
ILLINOIS FED. AID PROJECT				