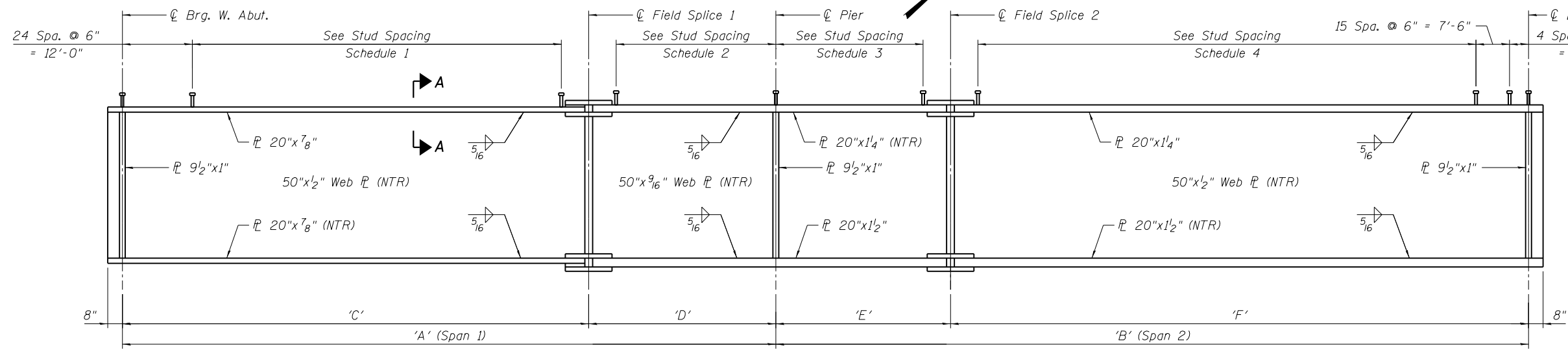


FRAMING PLAN

SECTION A-A



GIRDER ELEVATION

SECTION AT PIER & ABUTMENTS

SHEAR STUD SPACING

Girder No.	Schedule 1	Schedule 2	Schedule 3	Schedule 4
1	53 Spaces @ 15"	47 Spaces @ 9"	39 Spaces @ 9"	83 Spaces @ 14"
2	53 Spaces @ 15"	45 Spaces @ 9"	39 Spaces @ 9"	81 Spaces @ 14"
3	53 Spaces @ 15"	44 Spaces @ 9"	38 Spaces @ 9"	80 Spaces @ 14"
4	53 Spaces @ 15"	43 Spaces @ 9"	38 Spaces @ 9"	78 Spaces @ 14"
5	53 Spaces @ 15"	41 Spaces @ 9"	38 Spaces @ 9"	77 Spaces @ 14"
6	53 Spaces @ 15"	40 Spaces @ 9"	38 Spaces @ 9"	76 Spaces @ 14"

GIRDER DIMENSIONS

Girder No.	Radius	'A'	'B'	'C'	'D'	'E'	'F'	'L'
1	949.54'	116'-8 ³ / ₄ "	138'-6 ⁵ / ₁₆ "	79'-8 ³ / ₄ "	37'-0"	31'-0"	107'-6 ⁵ / ₁₆ "	255'-3 ¹ / ₈ "
2	955.29'	115'-8 ⁵ / ₁₆ "	136'-5 ⁹ / ₁₆ "	79'-9 ¹ / ₁₆ "	35'-11 ¹ / ₄ "	30'-9 ⁵ / ₁₆ "	105'-8 ¹ / ₄ "	252'-2 ¹ / ₂ "
3	961.04'	114'-9 ⁹ / ₁₆ "	134'-6 ⁵ / ₁₆ "	79'-10 ¹ / ₁₆ "	34'-10 ⁷ / ₈ "	30'-6 ³ / ₄ "	103'-11 ⁹ / ₁₆ "	249'-3 ⁵ / ₁₆ "
4	966.79'	113'-10 ¹ / ₁₆ "	132'-8 ¹ / ₂ "	79'-11 ³ / ₁₆ "	33'-10 ⁵ / ₁₆ "	30'-4 ³ / ₈ "	102'-4 ¹ / ₈ "	246'-7 ³ / ₁₆ "
5	972.54'	113'-0 ⁵ / ₁₆ "	130'-11 ⁷ / ₁₆ "	80'-1"	32'-11 ⁵ / ₁₆ "	30'-2 ¹ / ₈ "	100'-9 ³ / ₄ "	244'-0 ³ / ₁₆ "
6	978.29'	112'-2 ⁵ / ₁₆ "	129'-4 ⁷ / ₁₆ "	80'-2 ⁵ / ₁₆ "	32'-0"	30'-0"	99'-4 ⁷ / ₁₆ "	241'-6 ¹ / ₁₆ "

LAYOUT DIMENSIONS

Girder No.	W. Abut.		Splice 1		Pier		Splice 2		E. Abut.	
	X	Y	X	Y	X	Y	X	Y	X	Y
1	85'-10 ¹ / ₂ "	27'-9 ¹ / ₄ "	6'-3 ¹ / ₈ "	23'-10 ³ / ₄ "	30'-8 ³ / ₄ "	24'-4 ¹ / ₂ "	61'-8 ³ / ₈ "	25'-10 ⁵ / ₈ "	168'-4 ³ / ₈ "	38'-11"
2	92'-4 ⁵ / ₈ "	22'-7 ¹ / ₄ "	12'-8 ⁵ / ₈ "	18'-2 ¹ / ₂ "	23'-2 ¹ / ₂ "	18'-4 ⁷ / ₈ "	53'-11 ¹ / ₂ "	19'-7 ³ / ₄ "	158'-11 ¹ / ₄ "	31'-5 ¹ / ₄ "
3	98'-10 ¹ / ₄ "	17'-5 ⁵ / ₈ "	19'-1 ⁵ / ₈ "	12'-6 ³ / ₄ "	15'-9 ¹ / ₄ "	12'-6"	46'-3 ³ / ₄ "	13'-5 ⁷ / ₈ "	149'-8 ¹ / ₄ "	24'-1 ¹ / ₄ "
4	105'-3 ³ / ₈ "	12'-4 ¹ / ₂ "	25'-6 ¹ / ₈ "	6'-11 ¹ / ₂ "	8'-4 ³ / ₄ "	6'-8"	38'-9"	7'-4 ⁷ / ₈ "	140'-7 ¹ / ₄ "	16'-10 ⁷ / ₈ "
5	111'-8 ¹ / ₈ "	7'-3 ³ / ₄ "	31'-10"	1'-4 ³ / ₄ "	1'-1 ¹ / ₄ "	10 ¹ / ₂ "	31'-3 ¹ / ₄ "	1'-4 ¹ / ₂ "	131'-8 ¹ / ₄ "	9'-10"
6	118'-0 ¹ / ₄ "	2'-3 ¹ / ₄ "	38'-1 ³ / ₈ "	4'-1 ⁵ / ₈ "	6'-1 ¹ / ₂ "	4'-10 ¹ / ₄ "	23'-10 ¹ / ₂ "	4'-7"	122'-11"	2'-10 ¹ / ₂ "

CROSS-FRAME SPACING

Girder No.	'G'	'H'	'I'	'J'	'M'
2	12'-2 ¹ / ₂ "	7'-6 ⁷ / ₁₆ "	7'-8 ⁹ / ₁₆ "	7'-9 ⁷ / ₁₆ "	7'-2 ⁹ / ₁₆ "
3	11'-4 ⁹ / ₁₆ "	7'-5"	7'-7"	7'-9 ¹ / ₁₆ "	5'-5 ¹ / ₄ "
4	10'-7 ¹ / ₁₆ "	7'-3 ⁵ / ₈ "	7'-5 ⁹ / ₁₆ "	7'-7 ⁹ / ₁₆ "	3'-10 ³ / ₈ "
5	9'-10"	7'-2 ⁵ / ₁₆ "	7'-4 ¹ / ₈ "	7'-6 ¹ / ₁₆ "	2'-4 ¹ / ₁₆ "
6	8'-5 ⁵ / ₁₆ "	7'-9"	7'-2 ¹³ / ₁₆ "	7'-4 ¹ / ₁₆ "	0'-11 ⁵ / ₁₆ "

- Notes:
- All structural steel shall be AASHTO M 270 Grade 50 steel.
 - Plates designated "NTR" shall conform to the Impact Testing Requirement, Zone 2.

3:33:28 PM

4/30/2013

S:\1072_05_CADD\Structure\1-SN_0162471\CADD_Sheets\0162471-6012-021-FR01.dgn

BOWMAN, BARRETT & ASSOCIATES INC.
CONSULTING ENGINEERS
Chicago, Illinois
312.228.0100
www.bbainc.com

USER NAME =
DESIGNED - IYL
CHECKED - BAK
PLOT SCALE =
DRAWN - MTR
PLOT DATE = 03/29/2013
CHECKED - IYL

STATE OF ILLINOIS
DEPARTMENT OF TRANSPORTATION

FRAMING PLAN
STRUCTURE NO. 016-2471
SHEET NO. S-21 OF S-63 SHEETS

F.A.I. R.E.	SECTION	COUNTY	TOTAL SHEETS	SHEET NO.
94	2012-059-BR	COOK	631	514

CONTRACT NO. 60J12
ILLINOIS FED. AID PROJECT