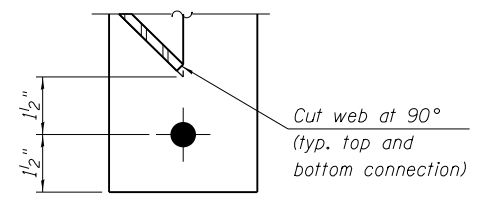
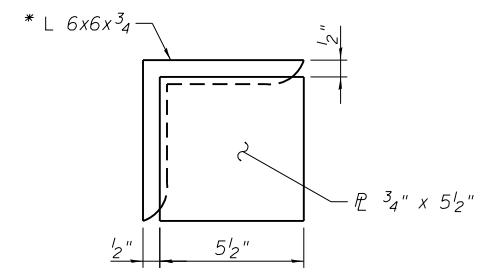


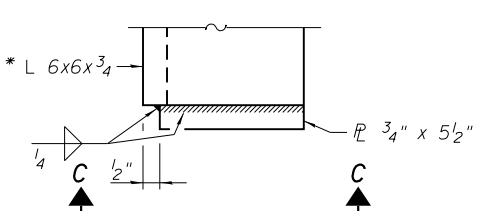
DETAIL 1



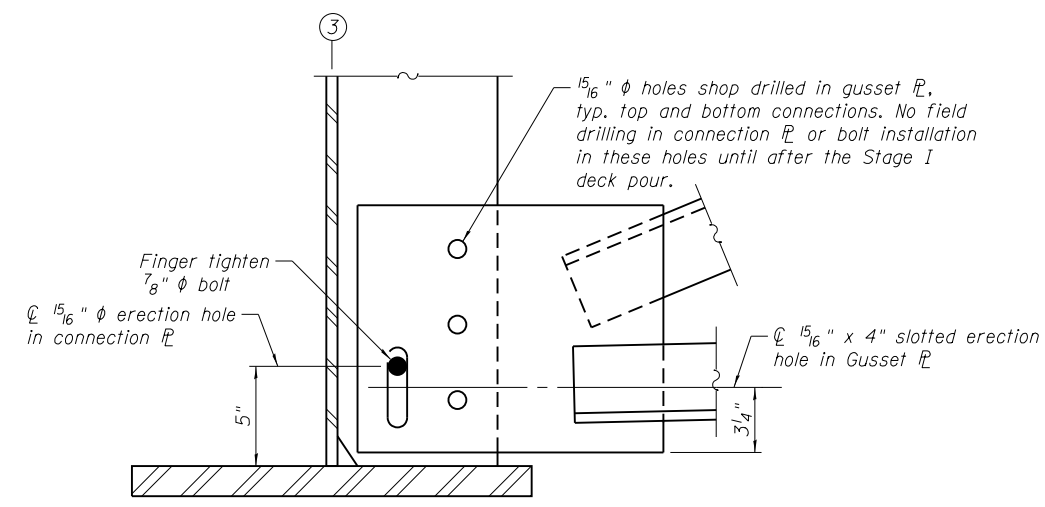
DETAIL 2



VIEW C-C

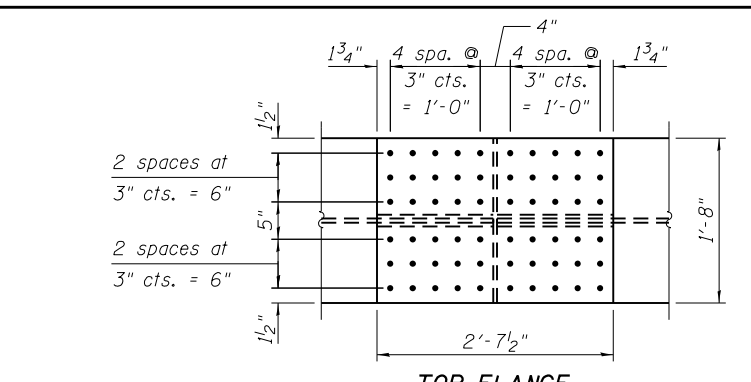


DETAIL 3

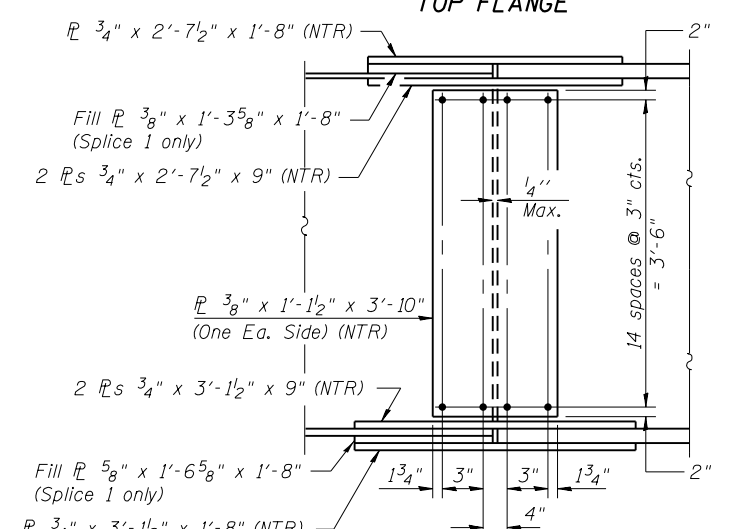


DETAIL A - BEFORE STAGE II DECK POUR

(Shown at point of maximum vertical deflection)



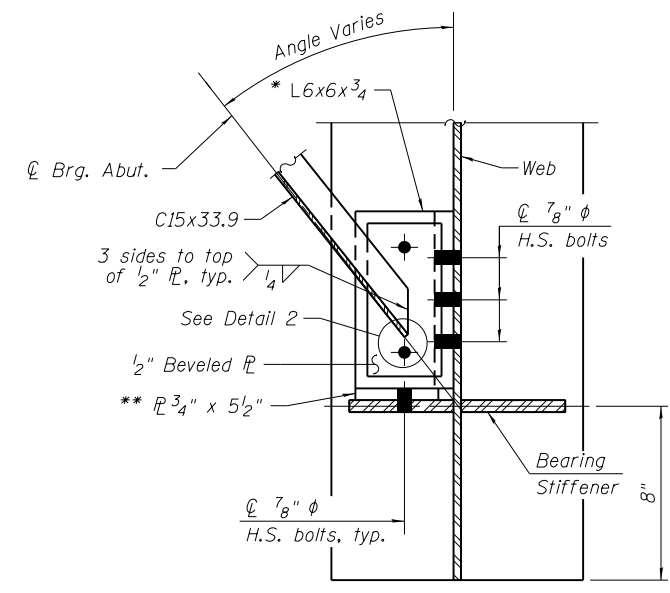
TOP FLANGE



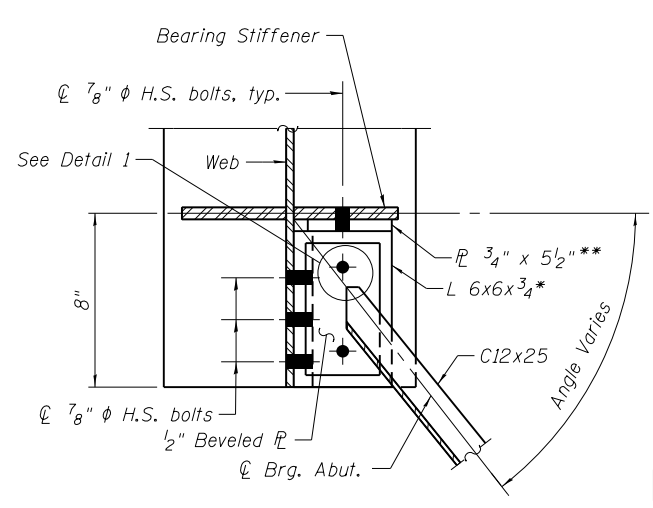
ELEVATION

FIELD SPLICE DETAIL

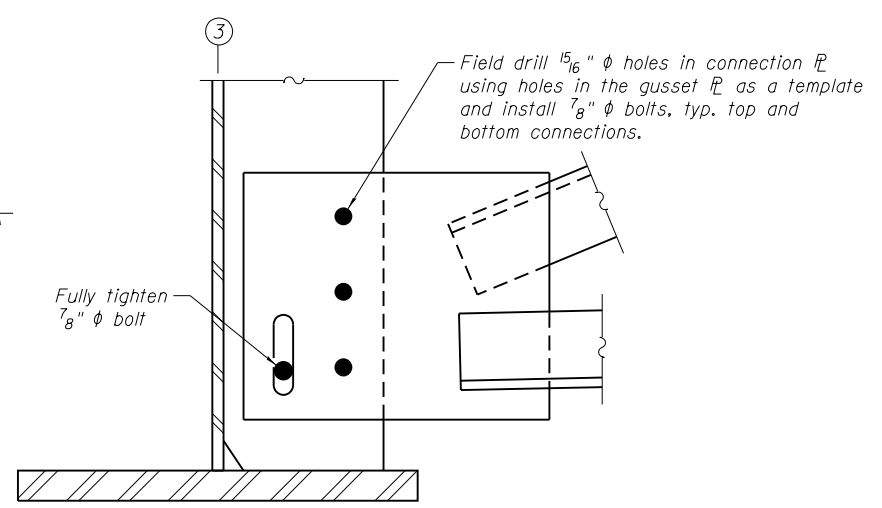
(12 Required)



SECTION A-A
BOTTOM CONNECTION DETAIL



SECTION B-B
TOP CONNECTION DETAIL



DETAIL A - AFTER STAGE II DECK POUR

* Two 3/4" plates connected with 1/4" fillet welds may be used in lieu of L6x6x3/4.

** Weld 3/4"x 5 1/2" plate to seat as shown in Detail 3.

- Notes:
- All splice plates shall be AASHTO M 270 Grade 50.
 - Plates designated "NTR" shall conform to the Impact Testing Requirement, Zone 2.

3/3/2013 PM

4/30/2013

S:\1072_05_CADD\Structure\0162471-0162471-024-5503.dgn

BOWMAN, BARRETT & ASSOCIATES INC.
CONSULTING ENGINEERS
Chicago, Illinois
312.228.0100
www.bbainc.com

USER NAME =	DESIGNED - IYL	REVISOR -
PLOT SCALE =	CHECKED - BAK	REVISIONS -
PLOT DATE = 03/29/2013	DRAWN - MTR	REVISIONS -
	CHECKED - IYL	REVISIONS -

STATE OF ILLINOIS
DEPARTMENT OF TRANSPORTATION

STRUCTURAL STEEL DETAILS III
STRUCTURE NO. 016-2471

SHEET NO. S-24 OF S-63 SHEETS

F.A.I. RTE.	SECTION	COUNTY	TOTAL SHEETS	SHEET NO.
94	2012-059-BR	COOK	631	517
CONTRACT NO. 60J12				

ILLINOIS FED. AID PROJECT