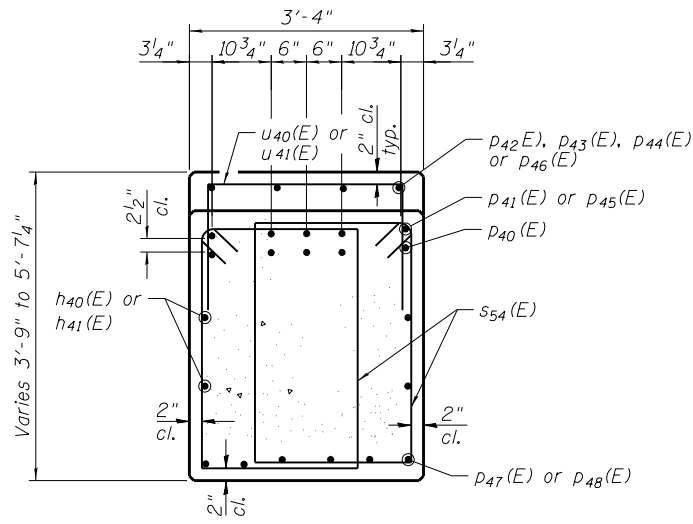
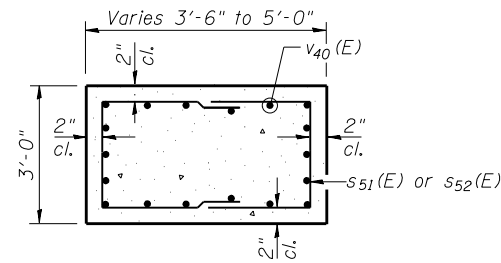


BILL OF MATERIAL

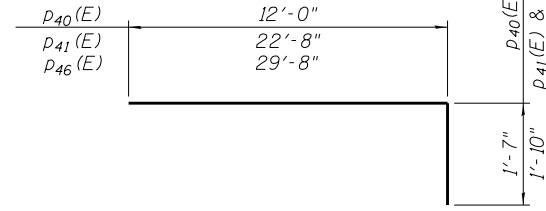
Bar	No.	Size	Length	Shape
h40(E)	4	#5	22'-8"	
h41(E)	4	#5	29'-8"	
h42(E)	8	#8	24'-2"	
h43(E)	10	#6	24'-2"	
h44(E)	8	#8	16'-10"	
h45(E)	10	#6	16'-10"	
n40(E)	54	#8	10'-8"	
p40(E)	10	#9	13'-7"	
p41(E)	5	#10	24'-6"	
p42(E)	12	#5	12'-6"	
p43(E)	4	#5	5'-7"	
p44(E)	4	#5	6'-8"	
p45(E)	5	#10	31'-6"	
p46(E)	4	#5	7'-4"	
p47(E)	6	#9	15'-9"	
p48(E)	6	#9	22'-9"	
p49(E)	8	#8	9'-4"	
s40(E)	4	#5	11'-9"	
s41(E)	4	#5	11'-7"	
s42(E)	4	#5	11'-4"	
s43(E)	4	#5	11'-2"	
s44(E)	4	#5	11'-0"	
s45(E)	4	#5	10'-9"	
s46(E)	4	#5	10'-7"	
s47(E)	4	#5	10'-5"	
s48(E)	4	#5	10'-2"	
s49(E)	4	#5	10'-0"	
s50(E)	4	#5	9'-10"	
s51(E)	24	#4	10'-0"	
s52(E)	24	#4	9'-0"	
s53(E)	86	#6	16'-4"	
s54(E)	62	#5	11'-11"	
t40(E)	46	#8	12'-6"	
t41(E)	46	#5	10'-8"	
u40(E)	16	#5	7'-0"	
u41(E)	31	#5	9'-0"	
u42(E)	8	#5	5'-10"	
u43(E)	14	#5	6'-6"	
v40(E)	54	#8	10'-6"	
w40(E)	22	#5	26'-2"	
w41(E)	22	#5	17'-10"	
Structure Excavation	Cu. Yd.		108	
Concrete Structures	Cu. Yd.		126.7	
Reinforcement Bars, Epoxy Coated	Pound		14,940	
Furnishing Metal Shell Piles 12" X 0.250"	Foot		870	
Driving Piles	Foot		870	
Test Pile Metal Shells	Each		1	
Concrete Sealer	Sq. Ft.		1,730	



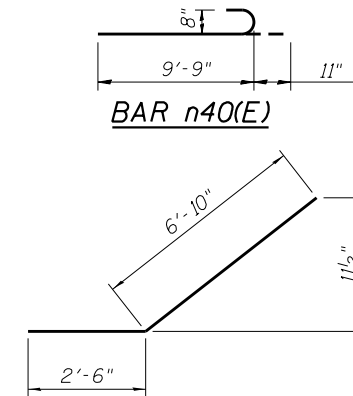
SECTION A-A



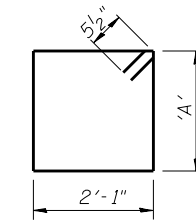
SECTION B-B



BARS p40(E), p41(E) & p45(E)



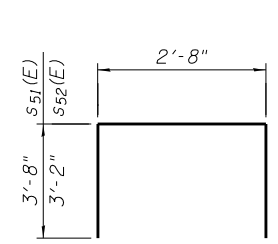
BAR p49(E)



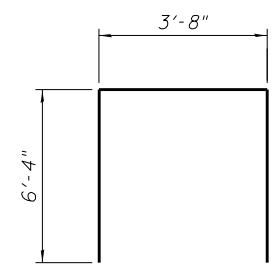
BARS s40(E) thru s50(E) & s54(E)

'A' DIMENSION

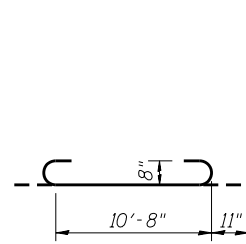
Bar	'A'
s40(E)	3'-4"
s41(E)	3'-3"
s42(E)	3'-1 1/2"
s43(E)	3'-0 1/2"
s44(E)	2'-11 1/2"
s45(E)	2'-10"
s46(E)	2'-9"
s47(E)	2'-8"
s48(E)	2'-6 1/2"
s49(E)	2'-5 1/2"
s50(E)	2'-4 1/2"
s54(E)	3'-5"



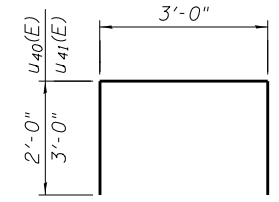
BARS s51(E) & s52(E)



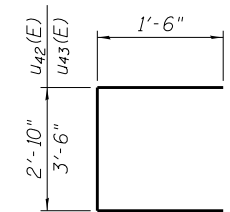
BAR s53(E)



BAR t40(E)



BARS u40(E) & u41(E)



BARS u42(E) & u43(E)

3:33:38 PM

4/30/2013

S:\1072_05_CADD\Structure\0162471\0162471-60112-038-P102.dgn

BOWMAN, BARRETT & ASSOCIATES INC.
 CONSULTING ENGINEERS
 Chicago, Illinois
 312.228.0100
 www.bbainc.com

USER NAME =	DESIGNED - SF	REVISED -
PLOT SCALE =	CHECKED - BAK	REVISED -
PLOT DATE = 03/29/2013	DRAWN - MTR	REVISED -
	CHECKED - SF	REVISED -

STATE OF ILLINOIS
DEPARTMENT OF TRANSPORTATION

PIER DETAILS II
STRUCTURE NO. 016-2471

SHEET NO. S-38 OF S-63 SHEETS

F.A.I. RTE.	SECTION	COUNTY	TOTAL SHEETS	SHEET NO.
94	2012-059-BR	COOK	631	531
CONTRACT NO. 60J12				
ILLINOIS FED. AID PROJECT				